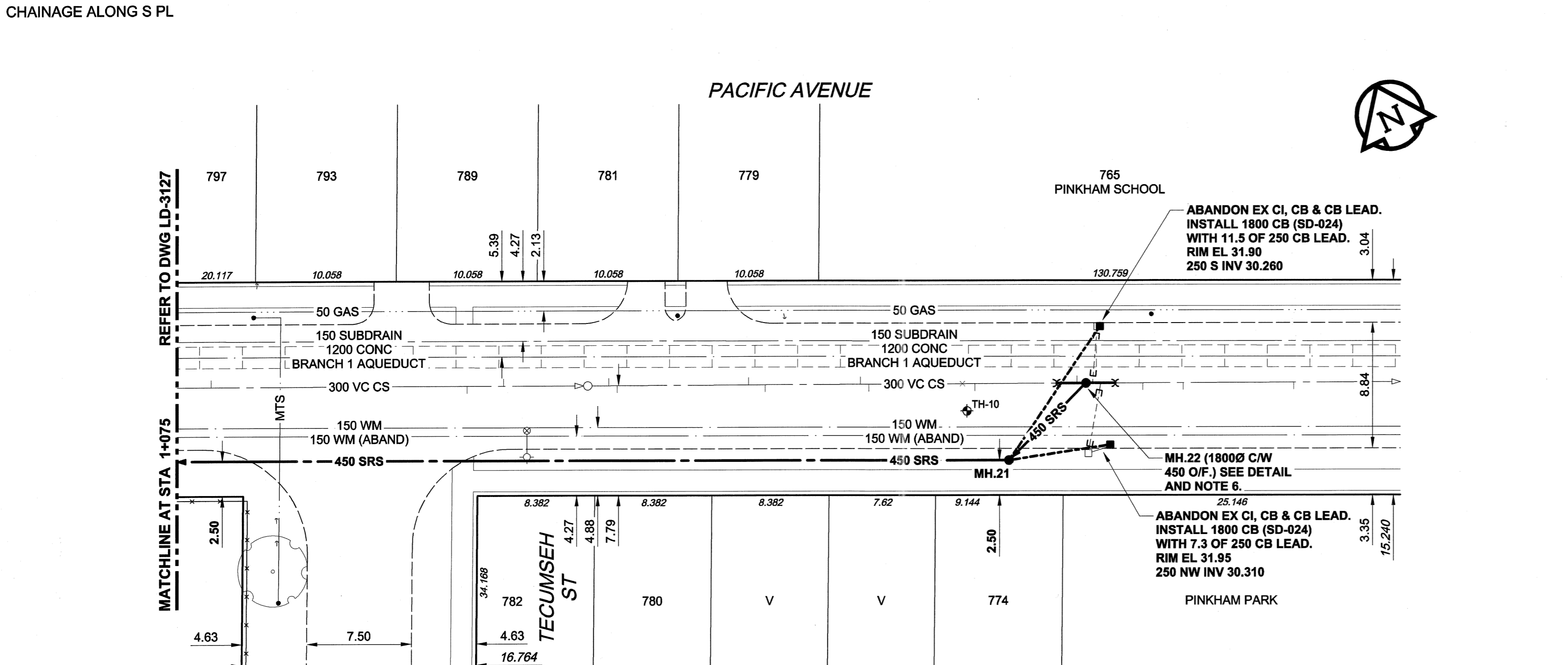
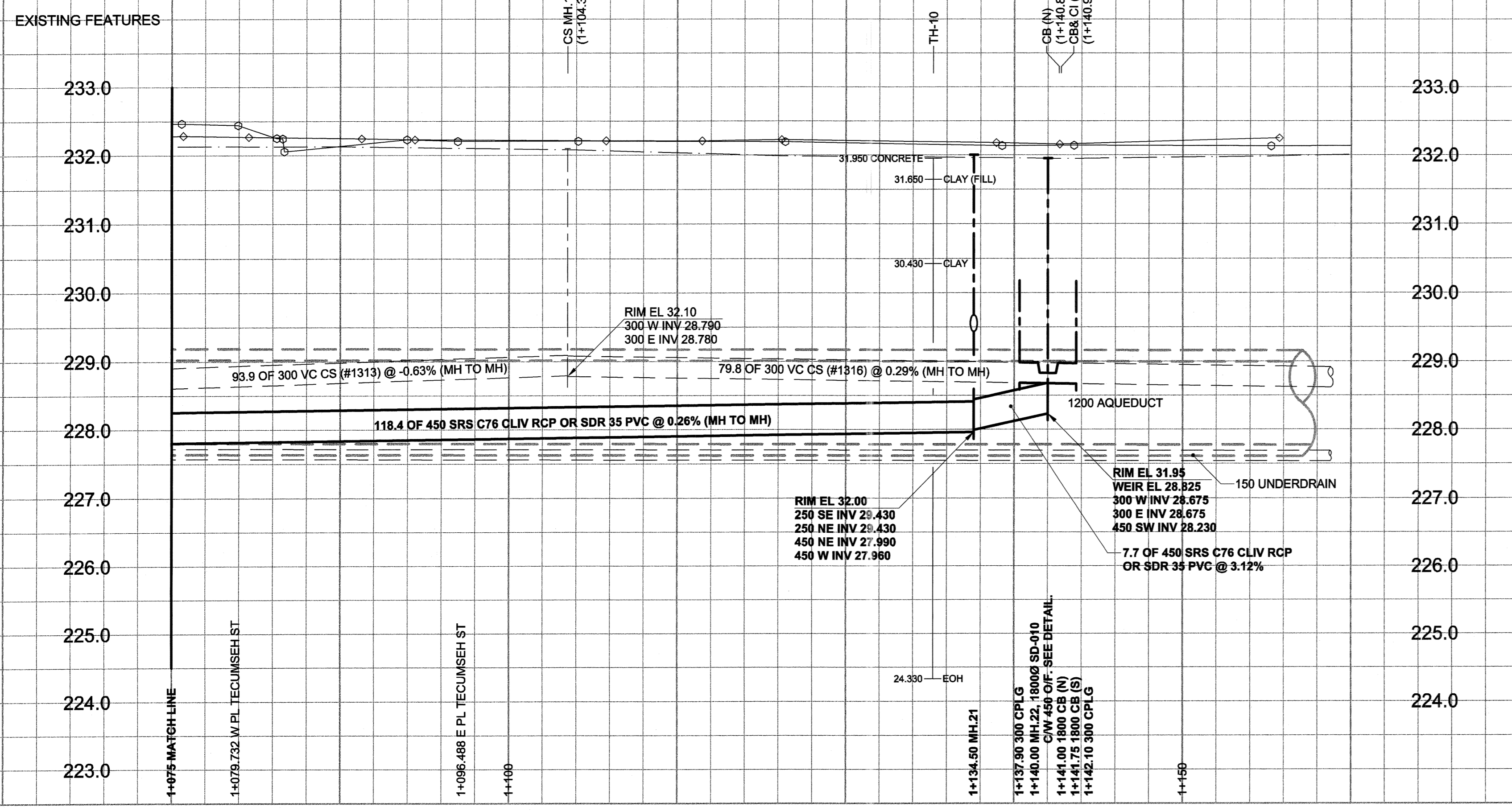


D SIZE 22" x 34" (559mm x 864mm)
 PLOT: 05/05/26 10:37:49 AM
 UMA FILE NAME: D265-177-01_02-C-1014_RX.dwg Saved By: alejpl

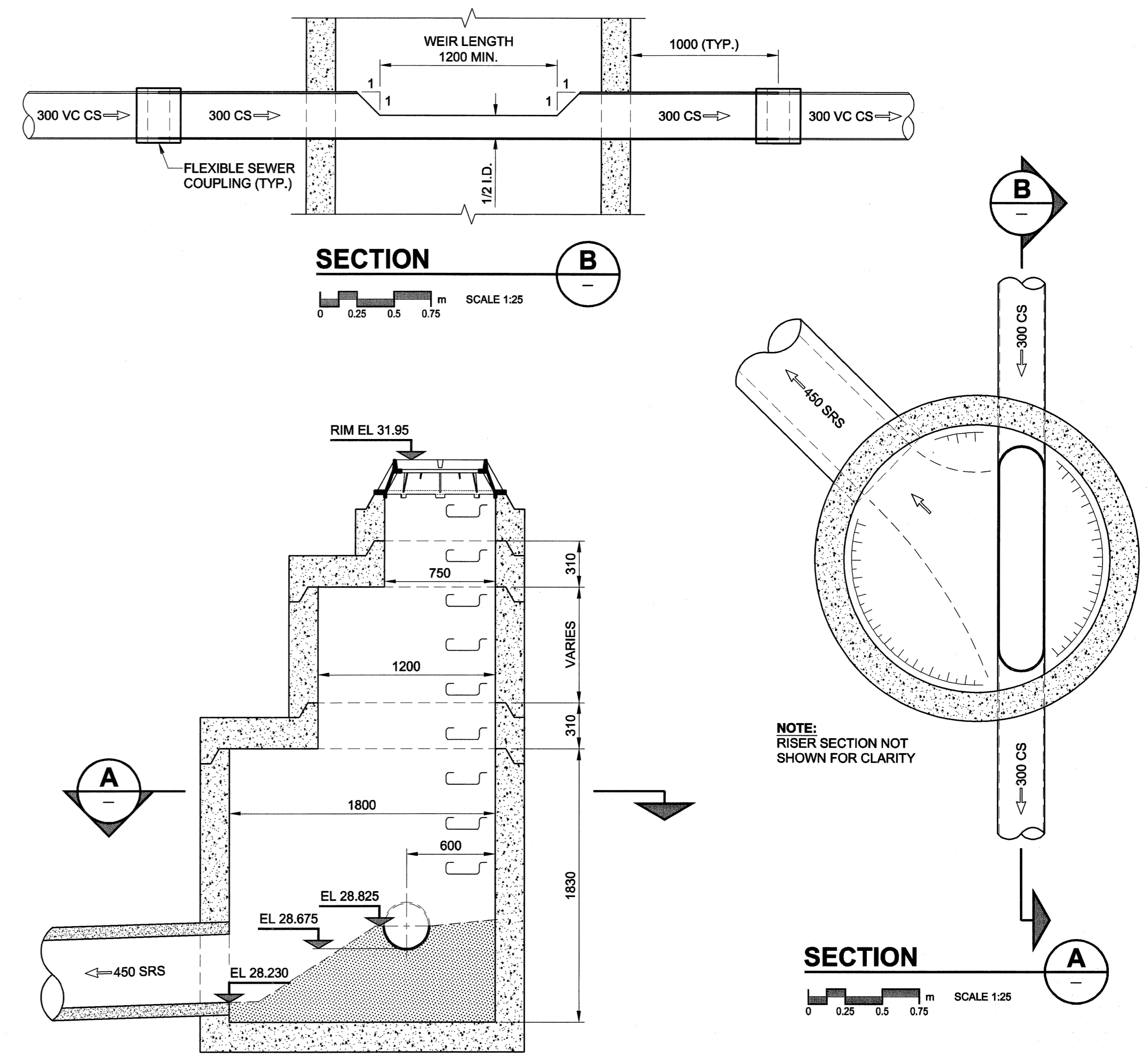


WARNING
 IF POWER EQUIPMENT OR EXPLOSIVES ARE TO BE USED FOR EXCAVATION ON THIS PROJECT, THE CONTRACTOR MUST:
 1) NOTIFY THE GAS COMPANY OF THE PROPOSED LOCATION OF EXCAVATION.
 2) TAKE PRECAUTION TO AVOID DAMAGE TO GAS COMPANY INSTALLATIONS.
 SEE PROVINCIAL REGULATION 140/92 FOR DETAILS

150 mm WM	WATERMAIN	150 mm WM	CURB STOP	150 mm WM	WATERMAIN	150 mm WM
	HYDRANT		REDUCER		HYDRANT	
	VALVE		COUPLING		VALVE	
	LAND DRAINAGE SEWER		ANODE		LAND DRAINAGE SEWER	
	MANHOLE		HYDRO		MANHOLE	
	CATCH BASIN		MTS		CATCH BASIN	
	CURB INLET		GAS		CURB INLET	
	CULVERT		TESTHOLE		CULVERT	
	PIPE ABANDONMENTS		LAMP STANDARD		PIPE ABANDONMENTS	
	SURVEY BAR		TREE		SURVEY BAR	
	EXISTING				EXISTING	
	LEGEND - PLAN				LEGEND - PLAN	
					LEGEND - PROFILE	

LOCATION APPROVED
 UNDERGROUND STRUCTURES
 SUPR. U/G STRUCTURES DATE COMMITTEE
 NOTE:
 LOCATION OF UNDERGROUND STRUCTURES AS SHOWN ARE BASED ON THE BEST INFORMATION AVAILABLE. BUT NO GUARANTEE IS GIVEN THAT ALL EXISTING UTILITIES ARE SHOWN OR THAT THE GIVEN LOCATIONS ARE EXACT. CONFIRMATION OF EXISTENCE AND EXACT LOCATION OF ALL SERVICES MUST BE OBTAINED FROM THE INDIVIDUAL UTILITIES BEFORE PROCEEDING WITH CONSTRUCTION.

BM 36-009 ELEV 232.501m	Toll. in W. wall of the City of Winnipeg Public Works Shops, S.E. Cor. of Pacific Ave. & Tecumseh St., 0.6m S. of N.W. Cor. of Bldg.
0	ISSUED FOR CONSTRUCTION 05/05/26 ADL
NO. REVISIONS	Y/M/M/DD BY



MANHOLE 22 OVERFLOW DETAIL
 SCALE 1:25
 TYPICAL MANHOLE REQUIREMENTS AS PER SD-010

- CONSTRUCTION NOTES:**
- FOR DETAILED TEST HOLE INFORMATION, SEE SPECIFICATION.
 - THE LOCATION OF ALL SERVICES IS TO BE CONFIRMED IN THE FIELD.
 - INSTALL NEW SEWERS AND CATCHBASIN LEADS BY TRENCHLESS METHODS WHEREVER POSSIBLE.
 - RENEW/REHABILITATE CATCHBASINS & RENEW CATCHBASIN LEADS WHERE NOTED.
 - CONTACT THE WATER AND WASTE DEPARTMENT CONSTRUCTION SERVICES CO-ORDINATOR, ANDY VINCENT, AT 986-3823 A MINIMUM OF 7 DAYS PRIOR TO CROSSING OR WORKING ADJACENT TO AQUEDUCT TO ARRANGE FOR INSPECTION.
 - LOCAL EXCAVATIONS SHALL BE TIGHT SHORED AND BRACED WITHIN 1.0m OF THE BRANCH I AQUEDUCT OD.

BID OPPORTUNITY NO. 137-2005

METRIC
 WHOLE NUMBERS INDICATE MILLIMETRES
 DECIMALIZED NUMBERS INDICATE METRES

UMA AECOM
 2005 UMA ENGINEERING LTD. ALL RIGHTS RESERVED.

DESIGNED BY: GEB/MM
 CHECKED BY: [Signature]
 DRAWN BY: ADL
 APPROVED BY: [Signature]
 HOR. SCALE: 1:250
 VERT. SCALE: 1:50
 DATE: 05/08/27

PROFESSIONAL'S SEAL
 PROVINCE OF MANITOBA
 REGISTERED PROFESSIONAL ENGINEER
 A. NAGY
 CONSULTANT DRAWING NO. 14
 D265-177-01-02

THE CITY OF WINNIPEG
 WATER AND WASTE DEPARTMENT

ALEXANDER/BANNATYNE
 COMBINED SEWER RELIEF
 CONTRACT 1B
 PACIFIC AVENUE
 75m E OF TECUMSEH STREET
 TO 340m W OF SHERBROOK STREET

SHEET 14 OF 18
 CITY DRAWING NUMBER
LD-3128
 REV 0