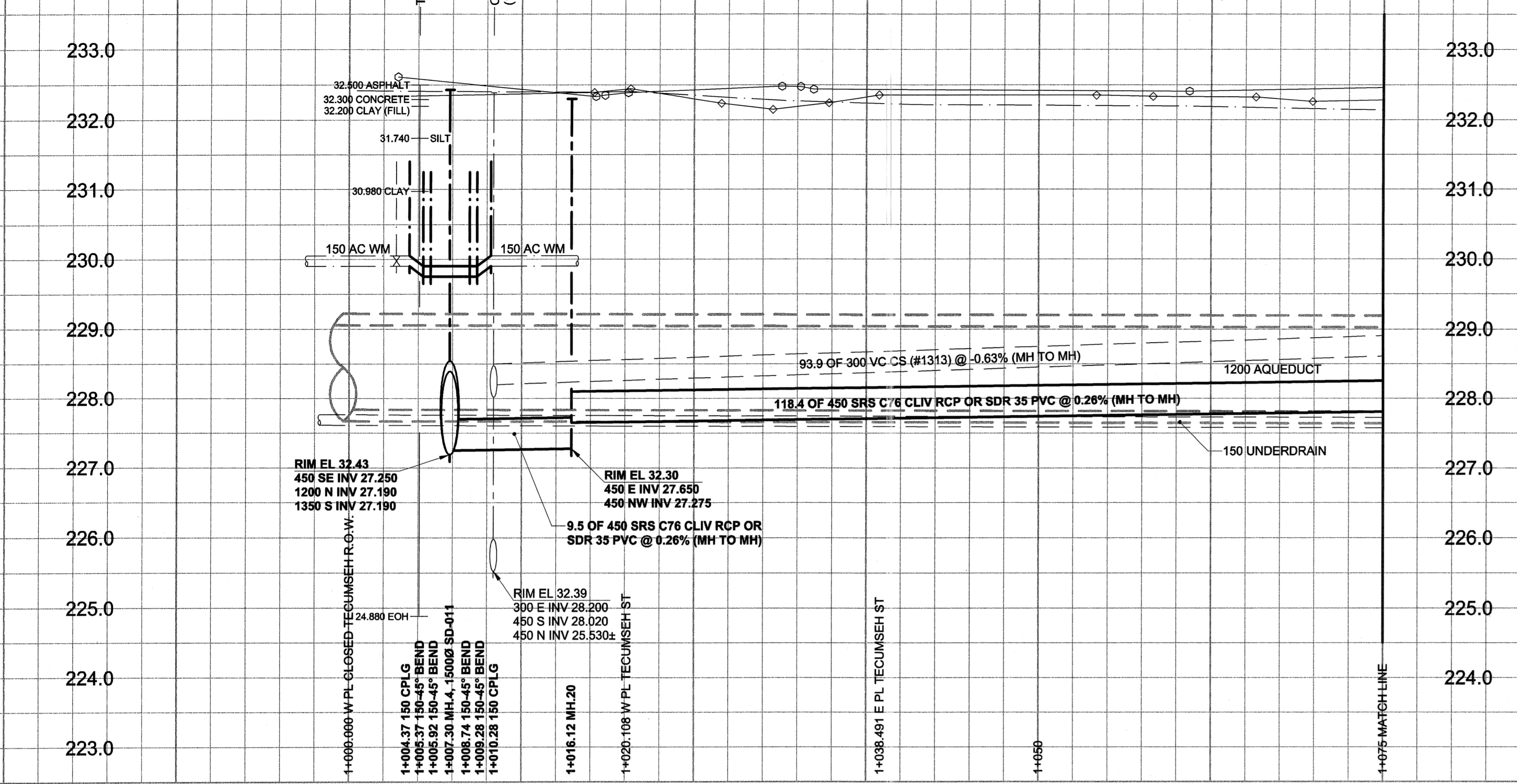


D SIZE 22" x 34" (56mm x 864mm)

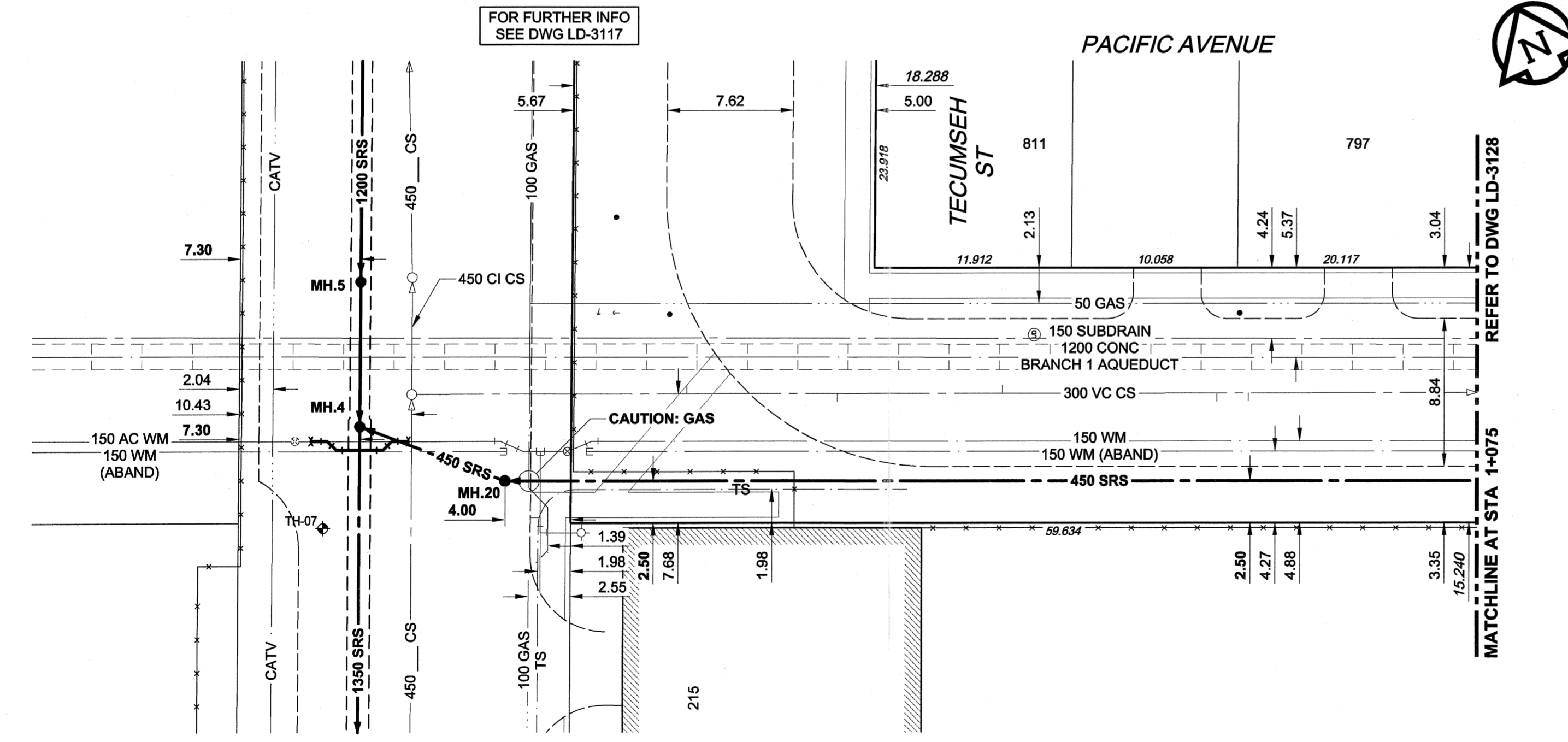
PLOT: 05/05/26 10:37:57 AM

UMA FILE NAME: D265-177-01\_02-C-1013\_RX.dwg Saved By: atleipi

EXISTING FEATURES



CHAINAGE ALONG S PL



FOR FURTHER INFO SEE DWG LD-3117

FOR FURTHER INFO SEE DWG LD-3117

**WARNING**  
 IF POWER EQUIPMENT OR EXPLOSIVES ARE TO BE USED FOR EXCAVATION ON THIS PROJECT, THE CONTRACTOR MUST:  
 1) NOTIFY THE GAS COMPANY OF THE PROPOSED LOCATION OF EXCAVATION.  
 2) TAKE PRECAUTION TO AVOID DAMAGE TO GAS COMPANY INSTALLATIONS.  
 SEE PROVINCIAL REGULATION 140/92 FOR DETAILS

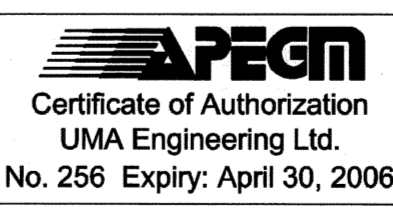
EXISTING	LEGEND - PLAN	NEW	EXISTING	LEGEND - PLAN	NEW	EXISTING	LEGEND - PROFILE	NEW
150 mm WM	WATERMAIN	150 mm WM	CURB STOP	REDUCER	150 mm WM	WATERMAIN	HYDRANT	150 mm WM
300 mm LDS	LAND DRAINAGE SEWER	300 mm LDS	VALVE	COUPLING	300 mm LDS	LAND DRAINAGE SEWER	VALVE	300 mm LDS
250 mm WWS	WASTE WATER SEWER	250 mm WWS	ANODE	HYDRO	250 mm WWS	WASTE WATER SEWER	PAVEMENT CROWN	250 mm WWS
MANHOLE	MANHOLE	MANHOLE	MTS	MTS	MANHOLE	WASTE WATER SEWER	N/W PROPERTY LINE	MANHOLE
CATCH BASIN	CATCH BASIN	CATCH BASIN	GAS	GAS	CATCH BASIN	WASTE WATER SEWER	S/E PROPERTY LINE	CATCH BASIN
CURB INLET	CURB INLET	CURB INLET	TESTHOLE	TESTHOLE	CURB INLET	WASTE WATER SEWER	N/W GUTTER	CURB INLET
CULVERT	CULVERT	CULVERT	LAMP STANDARD	LAMP STANDARD	CULVERT	WASTE WATER SEWER	S/E GUTTER	CULVERT
PIPE ABANDONMENTS	PIPE ABANDONMENTS	PIPE ABANDONMENTS	TREE	TREE	PIPE ABANDONMENTS	WASTE WATER SEWER	S/E GUTTER	PIPE ABANDONMENTS
SURVEY BAR	SURVEY BAR	SURVEY BAR			SURVEY BAR	WASTE WATER SEWER	S/E GUTTER	SURVEY BAR

**LOCATION APPROVED UNDERGROUND STRUCTURES**

SUPR. U/G STRUCTURES COMMITTEE DATE

**NOTE:**  
 LOCATION OF UNDERGROUND STRUCTURES AS SHOWN ARE BASED ON THE BEST INFORMATION AVAILABLE. BUT NO GUARANTEE IS GIVEN THAT ALL EXISTING UTILITIES ARE SHOWN OR THAT THE GIVEN LOCATIONS ARE EXACT. CONFIRMATION OF EXISTENCE AND EXACT LOCATION OF ALL SERVICES MUST BE OBTAINED FROM THE INDIVIDUAL UTILITIES BEFORE PROCEEDING WITH CONSTRUCTION.

BM 36-009	Tblt. in W. wall of the City of Winnipeg Public Works Shop, S.E. Cor. of Pacific Ave. & Tecumseh St., 0.8m S. of N.W. Cor. of Bldg.	ELEV 232.501m	
DESIGNED BY	GEB/MM	CHECKED BY	
DRAWN BY	ADL	APPROVED BY	
HOR. SCALE	1:250	RELEASED FOR CONSTRUCTION	
VERT. SCALE	1:50	DATE	
0	ISSUED FOR CONSTRUCTION	05/05/26	ADL
NO.	REVISIONS	YY/MM/DD	BY
		DATE	05/05/27



**UMA | AECOM**

2005 UMA ENGINEERING LTD. ALL RIGHTS RESERVED.

DESIGNED BY GEB/MM  
 CHECKED BY  
 DRAWN BY ADL  
 APPROVED BY  
 HOR. SCALE 1:250  
 VERT. SCALE 1:50  
 0 ISSUED FOR CONSTRUCTION 05/05/26 ADL  
 NO. REVISIONS YY/MM/DD BY  
 DATE 05/05/27

**PROFESSIONAL'S SEAL**  
 PROVINCE OF MANITOBA  
 REGISTERED PROFESSIONAL ENGINEER  
 A. NAGY  
 CONSULTANT DRAWING NO. 13  
 D265-177-01-02

**THE CITY OF WINNIPEG WATER AND WASTE DEPARTMENT**

**ALEXANDER/BANNATYNE COMBINED SEWER RELIEF CONTRACT 1B**

PACIFIC AVENUE  
 CLOSED TECUMSEH STREET R.O.W TO 430m W OF SHERBROOK STREET

SHEET 13 OF 18  
 CITY DRAWING NUMBER  
**LD-3127**  
 REV 0

- CONSTRUCTION NOTES:**
- FOR DETAILED TEST HOLE INFORMATION, SEE SPECIFICATION.
  - THE LOCATION OF ALL SERVICES IS TO BE CONFIRMED IN THE FIELD.
  - INSTALL NEW SEWERS AND CATCHBASIN LEADS BY TRENCHLESS METHODS WHEREVER POSSIBLE.
  - RENEW/REHABILITATE CATCHBASINS & RENEW CATCHBASIN LEADS WHERE NOTED.
  - CONTACT THE WATER AND WASTE DEPARTMENT CONSTRUCTION SERVICES CO-ORDINATOR, ANDY VINCENT, AT 986-3823 A MINIMUM OF 7 DAYS PRIOR TO CROSSING OR WORKING ADJACENT TO AQUEDUCT TO ARRANGE FOR INSPECTION.

BID OPPORTUNITY NO. 137-2005