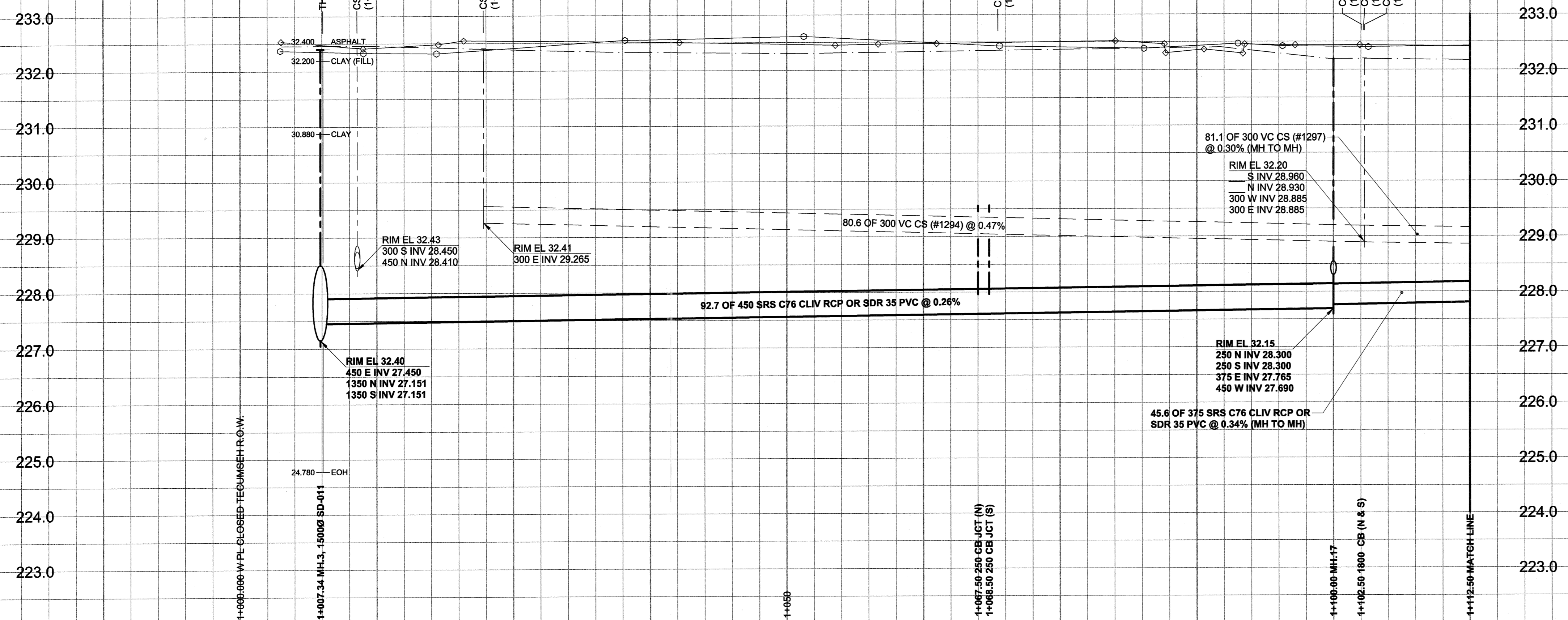


D SIZE 22" x 34" (559mm x 864mm)

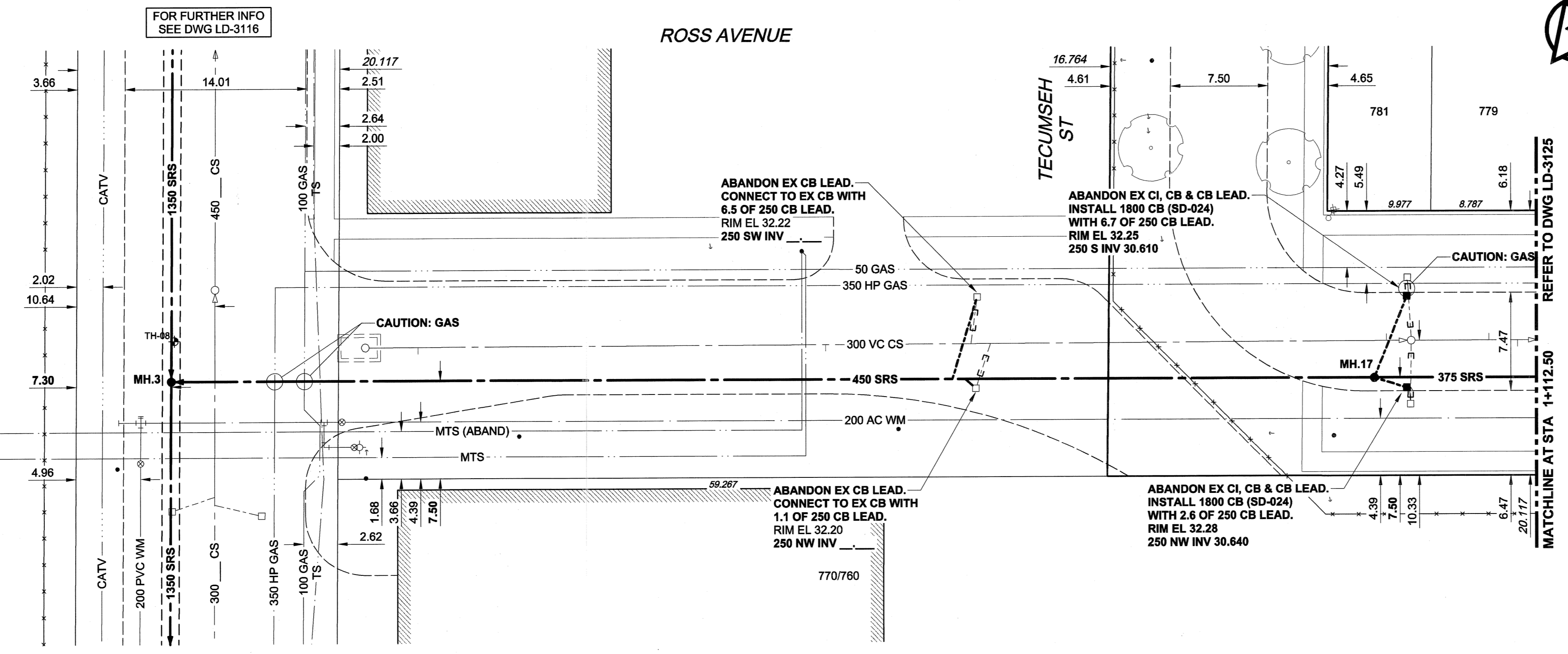
PLOT: 05/05/26 10:38:28 AM

UMA FILE NAME: D265-177-01_02-C-1010_RX.dwg Saved By: aleippi

EXISTING FEATURES



CHAINAGE ALONG S PL



WARNING
 IF POWER EQUIPMENT OR EXPLOSIVES ARE TO BE USED FOR EXCAVATION ON THIS PROJECT, THE CONTRACTOR MUST:
 1) NOTIFY THE GAS COMPANY OF THE PROPOSED LOCATION OF EXCAVATION.
 2) TAKE PRECAUTION TO AVOID DAMAGE TO GAS COMPANY INSTALLATIONS.
 SEE PROVINCIAL REGULATION 140/92 FOR DETAILS

FOR FURTHER INFO SEE DWG LD-3116

EXISTING	LEGEND - PLAN	NEW	EXISTING	LEGEND - PROFILE	NEW	EXISTING	LEGEND - PROFILE	NEW
○	WATERMAIN	150 mm WM	○	CURB STOP	○	○	WATERMAIN	150 mm WM
○	HYDRANT	○	○	REDUCER	○	○	HYDRANT	○
○	VALVE	○	○	COUPLING	○	○	VALVE	○
○	LAND DRAINAGE SEWER	300 mm LDS	○	ANODE	○	○	LAND DRAINAGE SEWER	300 mm LDS
○	WASTE WATER SEWER	250 mm WWS	○	HYDRO	○	○	WASTE WATER SEWER	250 mm WWS
○	MANHOLE	○	○	MTS	○	○	PAVEMENT CROWN	○
○	CATCH BASIN	○	○	GAS	○	○	N/W PROPERTY LINE	○
○	CURB INLET	○	○	TESTHOLE	○	○	S/E PROPERTY LINE	○
○	CULVERT	○	○	LAMP STANDARD	○	○	N/W GUTTER	○
○	PIPE ABANDONMENTS	○	○	TREE	○	○	S/E GUTTER	○
○	SURVEY BAR	○	○					

LOCATION APPROVED UNDERGROUND STRUCTURES

BM 36-009 Tilt in W. wall of the City of Winnipeg Public Works Shop, S.E. Cor. of Pacific Ave. & Tecumseh St., 0.6m S. of N.W. Cor. of Bldg.
 ELEV 232.501m

NO. REVISIONS

DATE

DATE

DATE

METRIC
 WHOLE NUMBERS INDICATE MILLIMETRES
 DECIMALIZED NUMBERS INDICATE METRES

UMA AECOM

2005 UMA ENGINEERING LTD. ALL RIGHTS RESERVED.

DESIGNED BY GEB/MM
 CHECKED BY [Signature]
 DRAWN BY ADL
 APPROVED BY [Signature]
 HOR. SCALE 1:250
 VERT. SCALE 1:50
 RELEASED FOR CONSTRUCTION
 DATE 05/05/27

APEGM
 Certificate of Authorization
 UMA Engineering Ltd.
 No. 256 Expiry: April 30, 2006

PROFESSIONAL'S SEAL
 PROVINCE OF MANITOBA
 May 26, 2005
 A. NAGY
 REGISTERED PROFESSIONAL ENGINEER
 CONSULTANT DRAWING NO. 10
 D265-177-01-02

THE CITY OF WINNIPEG
 WATER AND WASTE DEPARTMENT

ALEXANDER/BANNATYNE
 COMBINED SEWER RELIEF
 CONTRACT 1B

ROSS AVENUE
 CLOSED TECUMSEH STREET R.O.W
 TO 390m W OF SHERBROOK STREET

SHEET 10 OF 18
 CITY DRAWING NUMBER
 LD-3124
 REV 0

BID OPPORTUNITY NO. 137-2005

- CONSTRUCTION NOTES:**
- FOR DETAILED TEST HOLE INFORMATION, SEE SPECIFICATION.
 - THE LOCATION OF ALL SERVICES IS TO BE CONFIRMED IN THE FIELD.
 - INSTALL NEW SEWERS AND CATCHBASIN LEADS BY TRENCHLESS METHODS WHEREVER POSSIBLE.
 - RENEW/REHABILITATE CATCHBASINS & RENEW CATCHBASIN LEADS WHERE NOTED.