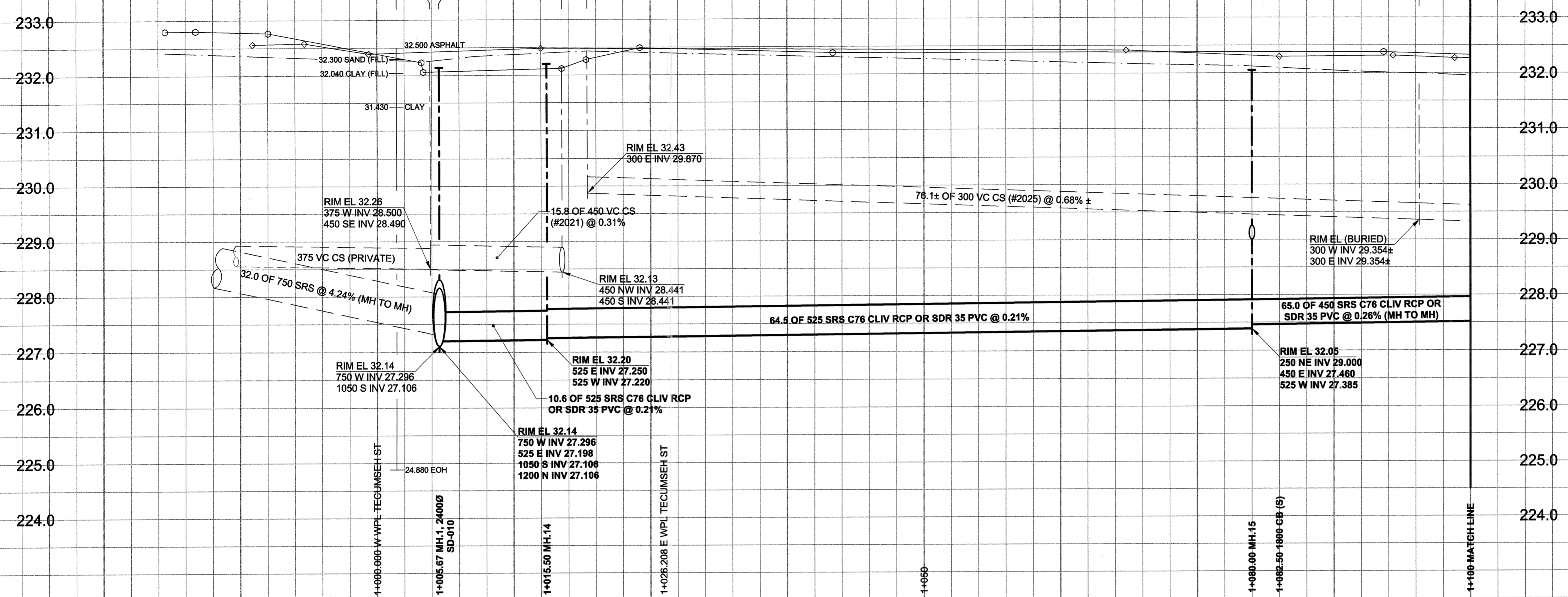
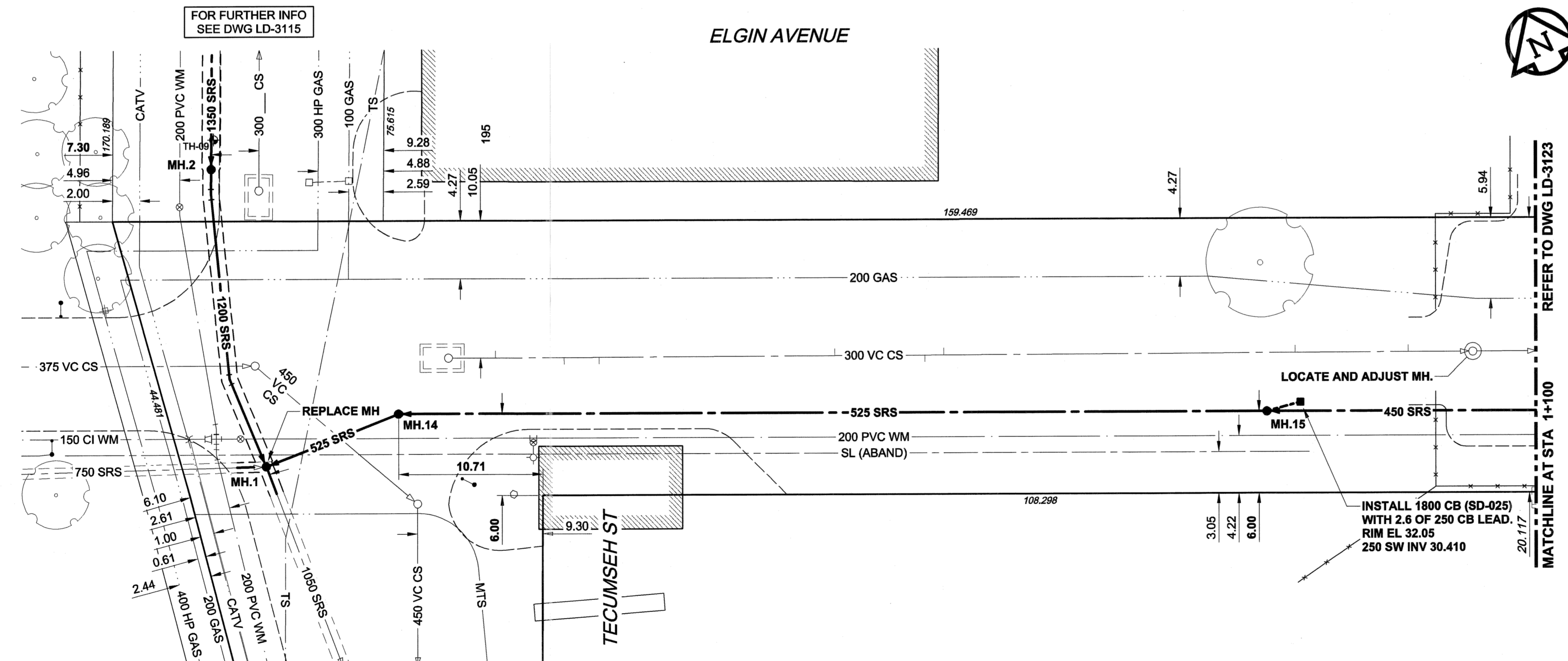


D SIZE 22" x 34" (560mm x 864mm) PLOT: 05/05/26 10:38:49 AM UMA FILE NAME: D265-177-01\_02-C-1008\_RX.dwg Saved By: atleppil

EXISTING FEATURES



CHAINAGE ALONG S PL



**WARNING**  
 IF POWER EQUIPMENT OR EXPLOSIVES ARE TO BE USED FOR EXCAVATION ON THIS PROJECT, THE CONTRACTOR MUST:  
 1) NOTIFY THE GAS COMPANY OF THE PROPOSED LOCATION OF EXCAVATION.  
 2) TAKE PRECAUTION TO AVOID DAMAGE TO GAS COMPANY INSTALLATIONS.  
 SEE PROVINCIAL REGULATION 140/92 FOR DETAILS

EXISTING	LEGEND - PLAN	NEW	EXISTING	LEGEND - PLAN	NEW	EXISTING	LEGEND - PROFILE	NEW
○	150 mm WM	○	○	150 mm WM	○	○	150 mm WM	○
○	HYDRANT	○	○	HYDRANT	○	○	HYDRANT	○
○	VALVE	○	○	VALVE	○	○	VALVE	○
○	LAND DRAINAGE SEWER	○	○	LAND DRAINAGE SEWER	○	○	LAND DRAINAGE SEWER	○
○	WASTE WATER SEWER	○	○	WASTE WATER SEWER	○	○	WASTE WATER SEWER	○
○	MANHOLE	○	○	MANHOLE	○	○	MANHOLE	○
○	CATCH BASIN	○	○	CATCH BASIN	○	○	CATCH BASIN	○
○	CURB INLET	○	○	CURB INLET	○	○	CURB INLET	○
○	CULVERT	○	○	CULVERT	○	○	CULVERT	○
○	PIPE ABANDONMENTS	○	○	PIPE ABANDONMENTS	○	○	PIPE ABANDONMENTS	○
○	SURVEY BAR	○	○	SURVEY BAR	○	○	SURVEY BAR	○
○	CURB STOP	○	○	CURB STOP	○	○	CURB STOP	○
○	REDUCER	○	○	REDUCER	○	○	REDUCER	○
○	COUPLING	○	○	COUPLING	○	○	COUPLING	○
○	ANODE	○	○	ANODE	○	○	ANODE	○
○	HYDRO	○	○	HYDRO	○	○	HYDRO	○
○	MTS	○	○	MTS	○	○	MTS	○
○	GAS	○	○	GAS	○	○	GAS	○
○	TESTHOLE	○	○	TESTHOLE	○	○	TESTHOLE	○
○	LAMP STANDARD	○	○	LAMP STANDARD	○	○	LAMP STANDARD	○
○	TREE	○	○	TREE	○	○	TREE	○

**LOCATION APPROVED UNDERGROUND STRUCTURES**

SUPR. U/G STRUCTURES	DATE

**NOTE:**  
 LOCATION OF UNDERGROUND STRUCTURES AS SHOWN ARE BASED ON THE BEST INFORMATION AVAILABLE. BUT NO GUARANTEE IS GIVEN THAT ALL EXISTING UTILITIES ARE SHOWN OR THAT THE GIVEN LOCATIONS ARE EXACT. CONFIRMATION OF EXISTENCE AND EXACT LOCATION OF ALL SERVICES MUST BE OBTAINED FROM THE INDIVIDUAL UTILITIES BEFORE PROCEEDING WITH CONSTRUCTION.

**METRIC**  
 WHOLE NUMBERS INDICATE MILLIMETRES  
 DECIMALIZED NUMBERS INDICATE METRES

DESIGNED BY	GEB/MM	CHECKED BY	[Signature]
DRAWN BY	ADL	APPROVED BY	[Signature]
HOR. SCALE	1:250	RELEASED FOR CONSTRUCTION	[Signature]
VERT. SCALE	1:50	DATE	05/05/27

**APEGM**  
 Certificate of Authorization  
 UMA Engineering Ltd.  
 No. 256 Expiry: April 30, 2006

PROFESSIONAL'S SEAL  
 PROVINCE OF MANITOBA  
 May 26, 2005  
 A. NAGY  
 REGISTERED PROFESSIONAL ENGINEER

**THE CITY OF WINNIPEG WATER AND WASTE DEPARTMENT**

**ALEXANDER/BANNATYNE COMBINED SEWER RELIEF CONTRACT 1B**

ELGIN AVENUE  
 TECUMSEH STREET  
 TO 410m WEST OF SHERBROOK STREET

SHEET 08 OF 18  
 CITY DRAWING NUMBER  
**LD-3122**  
 REV 0

BID OPPORTUNITY NO. 137-2005

- CONSTRUCTION NOTES:**
- FOR DETAILED TEST HOLE INFORMATION, SEE SPECIFICATION.
  - THE LOCATION OF ALL SERVICES IS TO BE CONFIRMED IN THE FIELD.
  - INSTALL NEW SEWERS AND CATCHBASIN LEADS BY TRENCHLESS METHODS WHEREVER POSSIBLE.
  - RENEW/REHABILITATE CATCHBASINS & RENEW CATCHBASIN LEADS WHERE NOTED.