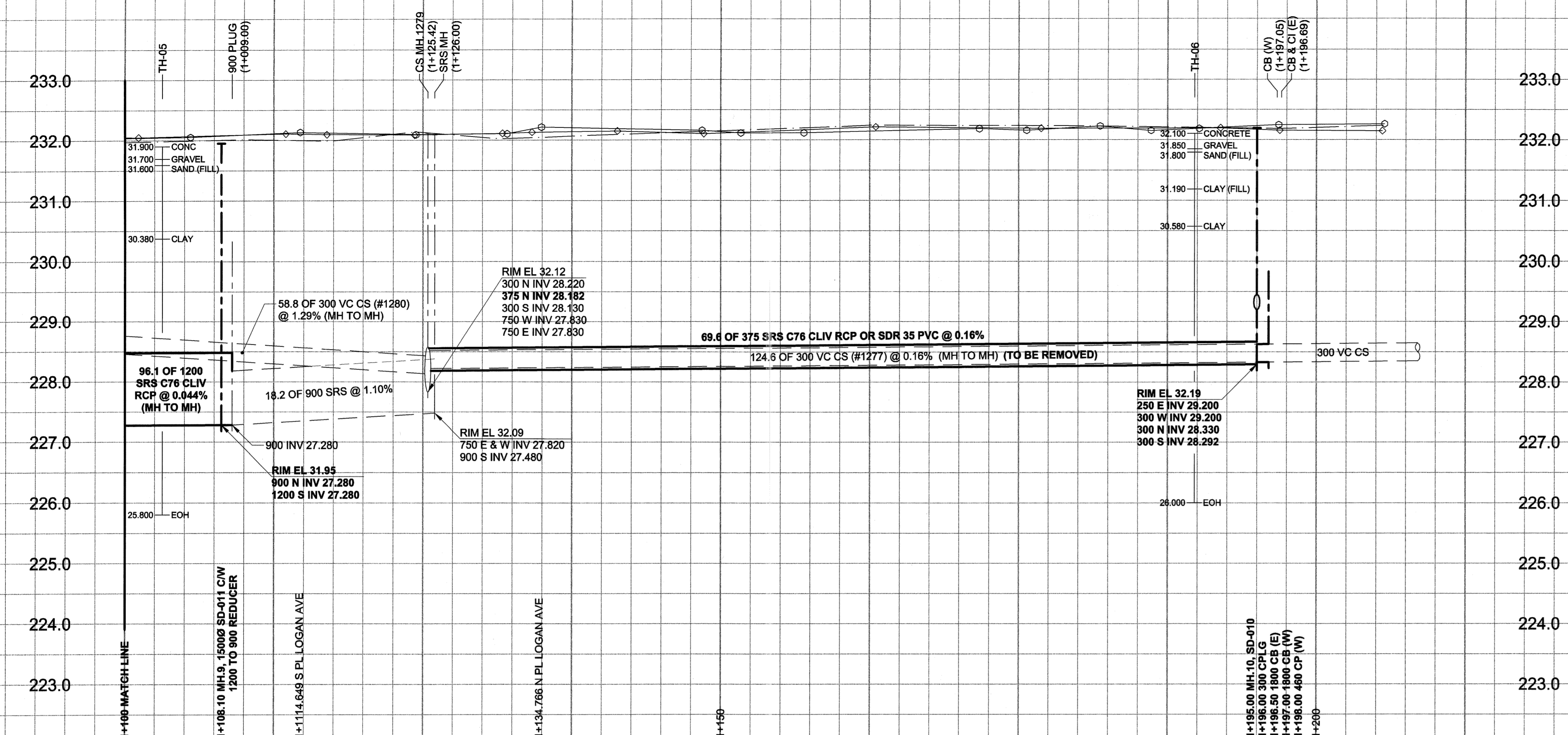


D SIZE 22" x 34" (559mm x 864mm)

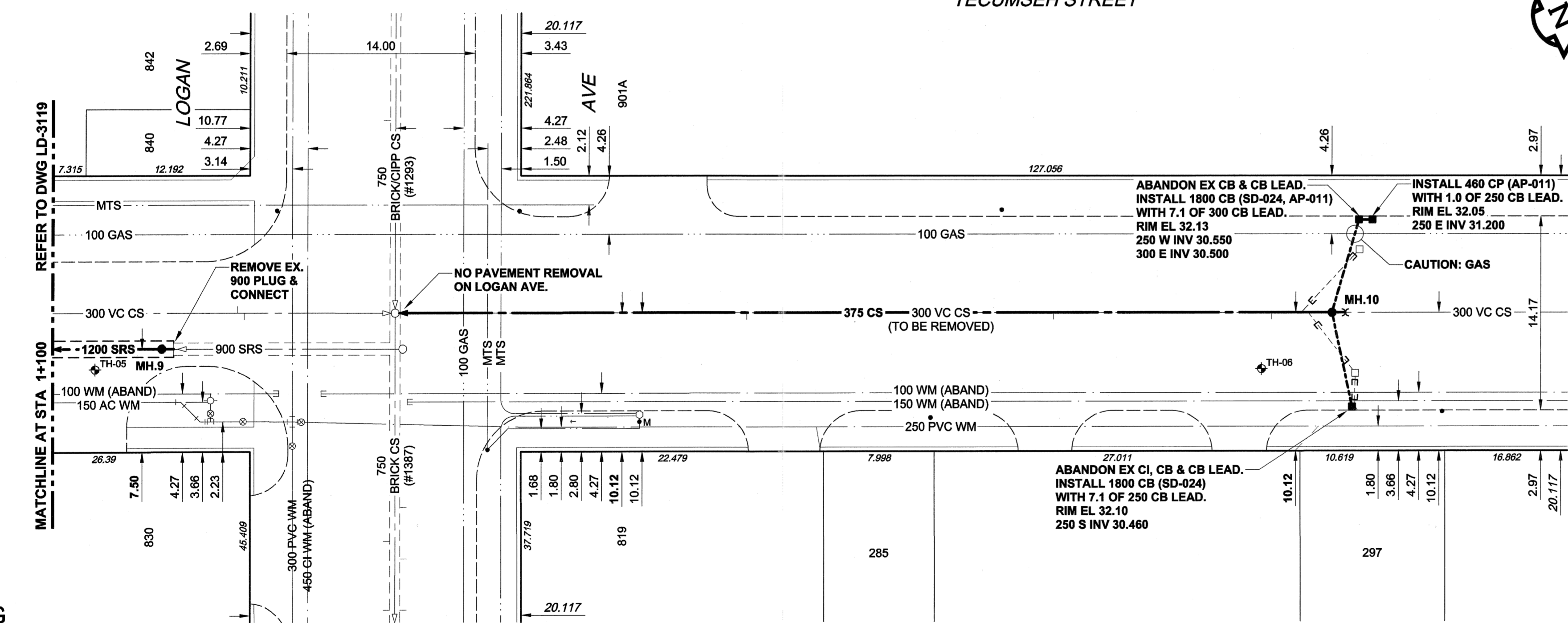
PLOT: 05/05/26 10:39:05 AM

UMA FILE NAME: D265-177-01_02-C-1006_RX.dwg Saved By: atleippi



CHAINAGE ALONG E PL

TECUMSEH STREET



SEWER SERVICE INFORMATION

ADDRESS	PL TIE (SHORT/LONG)	JUNCTION TIE	REMARKS
285 TECUMSEH			NO INFO
297 TECUMSEH			NO INFO

WATER SERVICE INFORMATION

ADDRESS	DISTANCE	SIZE (mm)	SHORT & LONG PROPERTY & TYPE	CORPORATION MEASUREMENT	LOCATION	REMARKS
285 TECUMSEH (RESIDENTIAL)	4.27	19	0.40 SSL HOUSE	0.30	S OF SC	
297 TECUMSEH (RESIDENTIAL)	1.98	19	3.20 SSL BLDG	1.74	N OF SC	

CONSTRUCTION NOTES:

- FOR DETAILED TEST HOLE INFORMATION, SEE SPECIFICATION.
- THE LOCATION OF ALL SERVICES IS TO BE CONFIRMED IN THE FIELD.
- INSTALL NEW SEWERS AND CATCHBASIN LEADS BY TRENCHLESS METHODS WHEREVER POSSIBLE.
- RENEW/REHABILITATE CATCHBASINS & RENEW CATCHBASIN LEADS WHERE NOTED.
- RENEW SEWER SERVICES TO PROPERTY LINE.

WARNING

IF POWER EQUIPMENT OR EXPLOSIVES ARE TO BE USED FOR EXCAVATION ON THIS PROJECT, THE CONTRACTOR MUST:

- NOTIFY THE GAS COMPANY OF THE PROPOSED LOCATION OF EXCAVATION.
- TAKE PRECAUTION TO AVOID DAMAGE TO GAS COMPANY INSTALLATIONS.

SEE PROVINCIAL REGULATION 140/92 FOR DETAILS

150 mm WM		150 mm WM		CURB STOP		150 mm WM		WATERMAIN		150 mm WM	
	HYDRANT		VALVE		REDUCER		HYDRANT		VALVE		300 mm LDS
	LAND DRAINAGE SEWER		WASTE WATER SEWER		ANODE		LAND DRAINAGE SEWER		WASTE WATER SEWER		250 mm WWS
	MANHOLE		CATCH BASIN		MTS		PAVEMENT CROWN		NW PROPERTY LINE		S/E PROPERTY LINE
	CURB INLET		CULVERT		GAS		NW GUTTER		S/E GUTTER		
	PIPE ABANDONMENTS		SURVEY BAR		TESTHOLE		LAMP STANDARD		TREE		
	EXISTING		NEW		EXISTING		NEW		EXISTING		NEW

LOCATION APPROVED UNDERGROUND STRUCTURES

SUPR. U/G STRUCTURES DATE COMMITTEE

NOTE: LOCATION OF UNDERGROUND STRUCTURES AS SHOWN ARE BASED ON THE BEST INFORMATION AVAILABLE. BUT NO GUARANTEE IS GIVEN THAT ALL EXISTING UTILITIES ARE SHOWN OR THAT THE GIVEN LOCATIONS ARE EXACT. CONFIRMATION OF EXISTENCE AND EXACT LOCATION OF ALL SERVICES MUST BE OBTAINED FROM THE INDIVIDUAL UTILITIES BEFORE PROCEEDING WITH CONSTRUCTION.

NO.	ISSUED FOR CONSTRUCTION	DATE	BY
0	ISSUED FOR CONSTRUCTION	05/05/26	ADL
	REVISIONS	YY/MM/DD	

METRIC
WHOLE NUMBERS INDICATE MILLIMETRES
DECIMALIZED NUMBERS INDICATE METRES

APEGM
Certificate of Authorization
UMA Engineering Ltd.
No. 256 Expiry: April 30, 2006

UMA | AECOM

2005 UMA ENGINEERING LTD. ALL RIGHTS RESERVED.

DESIGNED BY	GEB/MM	CHECKED BY	<i>[Signature]</i>
DRAWN BY	ADL	APPROVED BY	<i>[Signature]</i>
HOR. SCALE	1:250	RELEASED FOR CONSTRUCTION	<i>[Signature]</i>
VERT. SCALE	1:50	DATE	05/05/27

PROFESSIONAL'S SEAL
PROVINCE OF MANITOBA
May 26, 2005
A. NAGY
REGISTERED PROFESSIONAL ENGINEER

CONSULTANT DRAWING NO. 06
D265-177-01-02

THE CITY OF WINNIPEG
WATER AND WASTE DEPARTMENT

ALEXANDER/BANNATYNE
COMBINED SEWER RELIEF
CONTRACT 1B
TECUMSEH STREET

85m NORTH OF ALEXANDER AVENUE
TO 40m SOUTH OF HENRY AVENUE

SHEET 06 OF 18
CITY DRAWING NUMBER
LD-3120

BID OPPORTUNITY NO. 137-2005