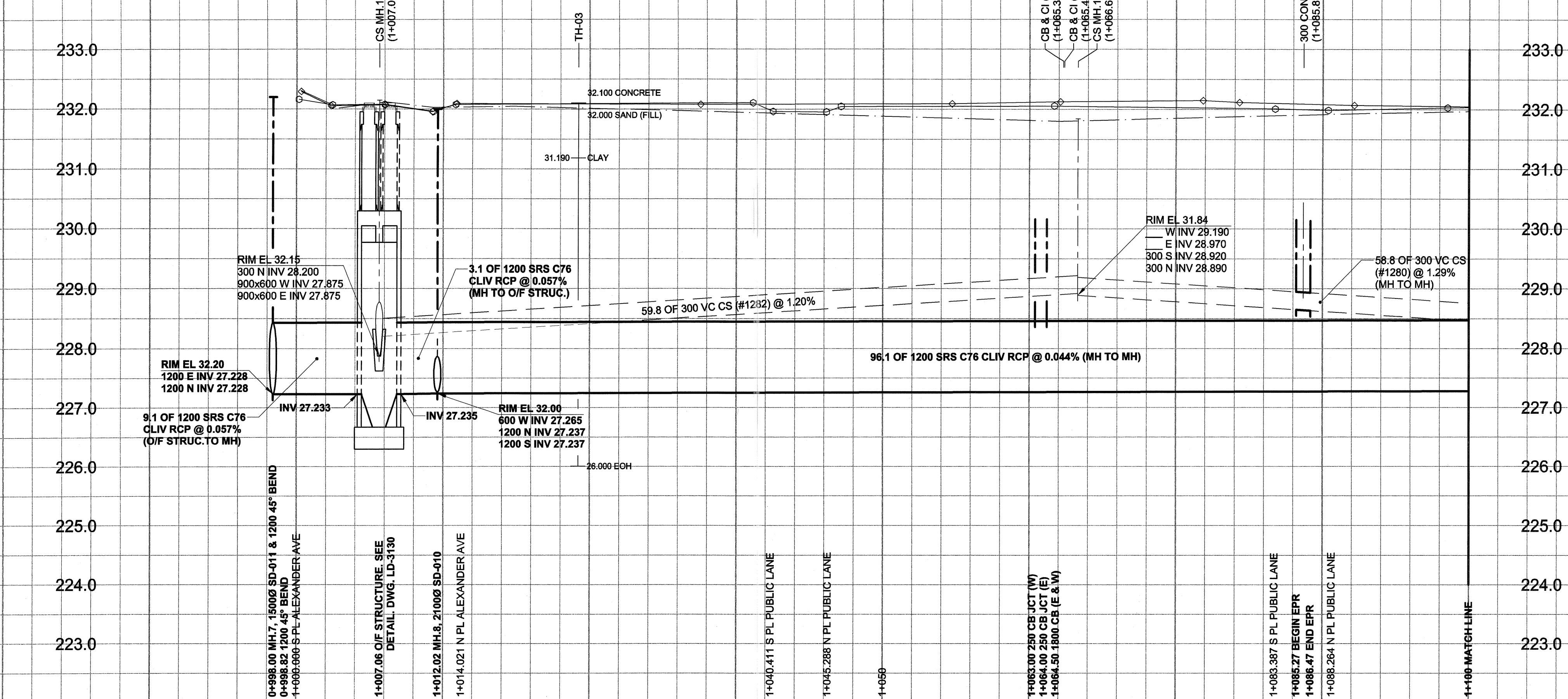
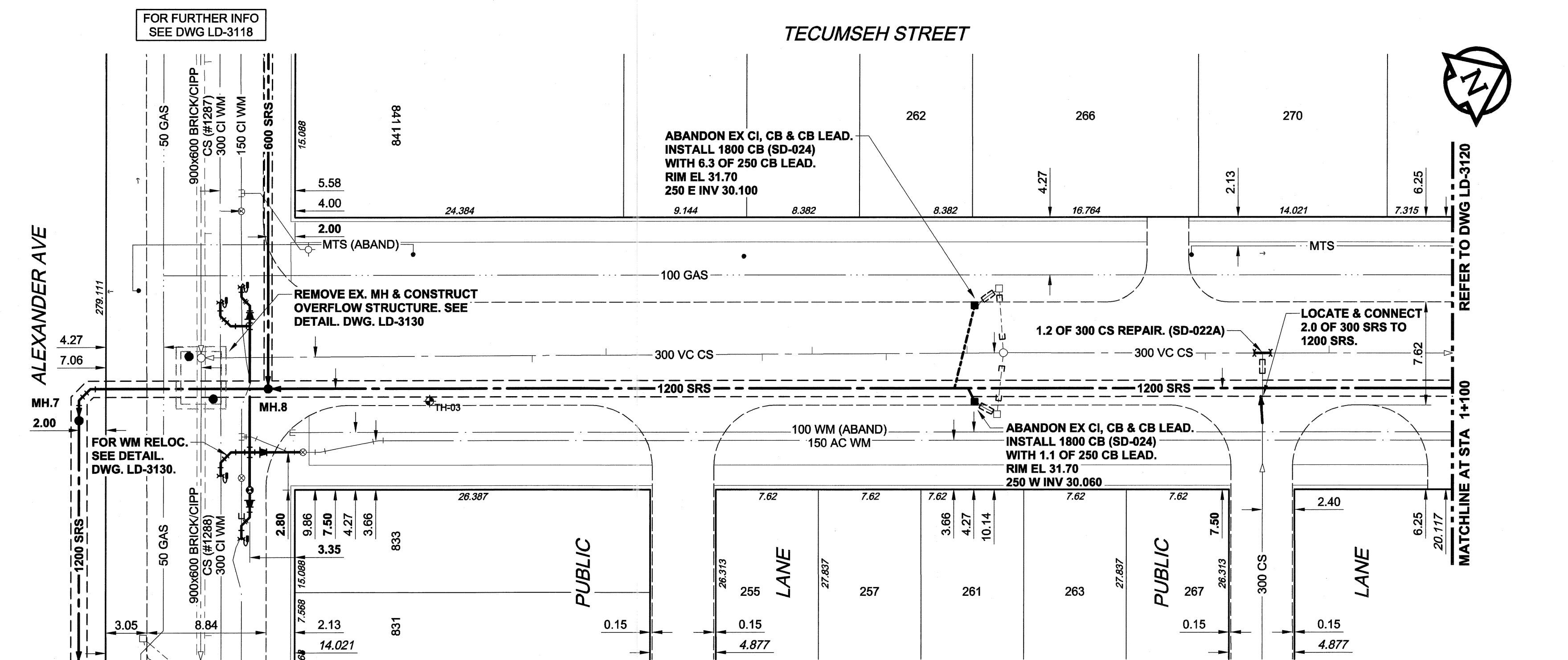


D SIZE 22" x 34" (559mm x 864mm)
 PLOT: 05/05/26 10:39:19 AM
 UMA FILE NAME: D265-177-01-02-C-1005_RX.dwg Saved By: atelpj

EXISTING FEATURES



CHAINAGE ALONG E PL



WARNING

IF POWER EQUIPMENT OR EXPLOSIVES ARE TO BE USED FOR EXCAVATION ON THIS PROJECT, THE CONTRACTOR MUST:

- 1) NOTIFY THE GAS COMPANY OF THE PROPOSED LOCATION OF EXCAVATION.
- 2) TAKE PRECAUTION TO AVOID DAMAGE TO GAS COMPANY INSTALLATIONS.

SEE PROVINCIAL REGULATION 140/92 FOR DETAILS

150 mm WM	WATERMAIN	150 mm WM	CURB STOP	150 mm WM	WATERMAIN	150 mm WM
	HYDRANT		REDUCER		HYDRANT	
	VALVE		COUPLING		VALVE	
	LAND DRAINAGE SEWER		ANODE		LAND DRAINAGE SEWER	
	WASTE WATER SEWER		HYDRO		WASTE WATER SEWER	
	MANHOLE		MTS		PAVEMENT CROWN	
	CATCH BASIN		GAS		NW PROPERTY LINE	
	CURB INLET		TESTHOLE		NW GUTTER	
	CULVERT		LAMP STANDARD		S/E GUTTER	
	PIPE ABANDONMENTS		TREE			
	SURVEY BAR					
EXISTING	LEGEND - PLAN	NEW	EXISTING	LEGEND - PLAN	NEW	EXISTING
				LEGEND - PROFILE		

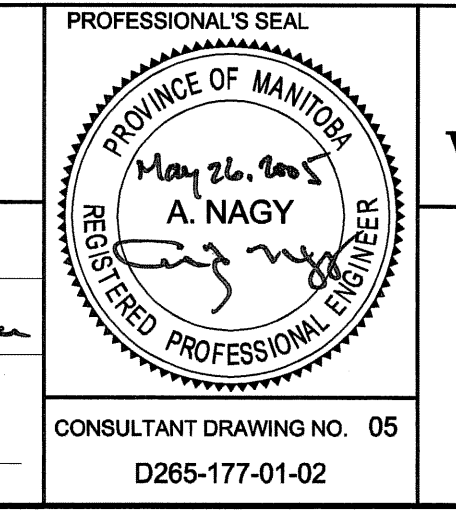
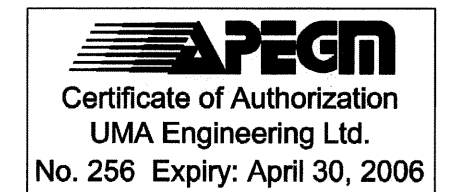
LOCATION APPROVED UNDERGROUND STRUCTURES

SUPR. U/G STRUCTURES DATE COMMITTEE

NOTE: LOCATION OF UNDERGROUND STRUCTURES AS SHOWN ARE BASED ON THE BEST INFORMATION AVAILABLE. BUT NO GUARANTEE IS GIVEN THAT ALL EXISTING UTILITIES ARE SHOWN OR THAT THE GIVEN LOCATIONS ARE EXACT. CONFIRMATION OF EXISTENCE AND EXACT LOCATION OF ALL SERVICES MUST BE OBTAINED FROM THE INDIVIDUAL UTILITIES BEFORE PROCEEDING WITH CONSTRUCTION.

NO.	ISSUED FOR CONSTRUCTION	DATE	BY
0	ISSUED FOR CONSTRUCTION	05/05/26	ADL
	REVISIONS	YYMMDD	BY

DESIGNED BY	GEB/MM	CHECKED BY	DATE
DESIGNED BY	GEB/MM	CHECKED BY	
DRAWN BY	ADL	APPROVED BY	
HOR. SCALE	1:250	RELEASED FOR CONSTRUCTION	
VERT. SCALE	1:50	DATE	05/05/27



THE CITY OF WINNIPEG WATER AND WASTE DEPARTMENT

ALEXANDER/BANNATYNE COMBINED SEWER RELIEF CONTRACT 1B

TECUMSEH STREET
ALEXANDER AVENUE
TO 15m SOUTH OF LOGAN AVENUE

SHEET 05 OF 18
CITY DRAWING NUMBER
LD-3119

BID OPPORTUNITY NO. 137-2005

- CONSTRUCTION NOTES:**
1. FOR DETAILED TEST HOLE INFORMATION, SEE SPECIFICATION.
 2. THE LOCATION OF ALL SERVICES IS TO BE CONFIRMED IN THE FIELD.
 3. INSTALL NEW SEWERS AND CATCHBASIN LEADS BY TRENCHLESS METHODS WHEREVER POSSIBLE.
 4. RENEW/REHABILITATE CATCHBASINS & RENEW CATCHBASIN LEADS WHERE NOTED.

METRIC
WHOLE NUMBERS INDICATE MILLIMETRES
DECIMALIZED NUMBERS INDICATE METRES