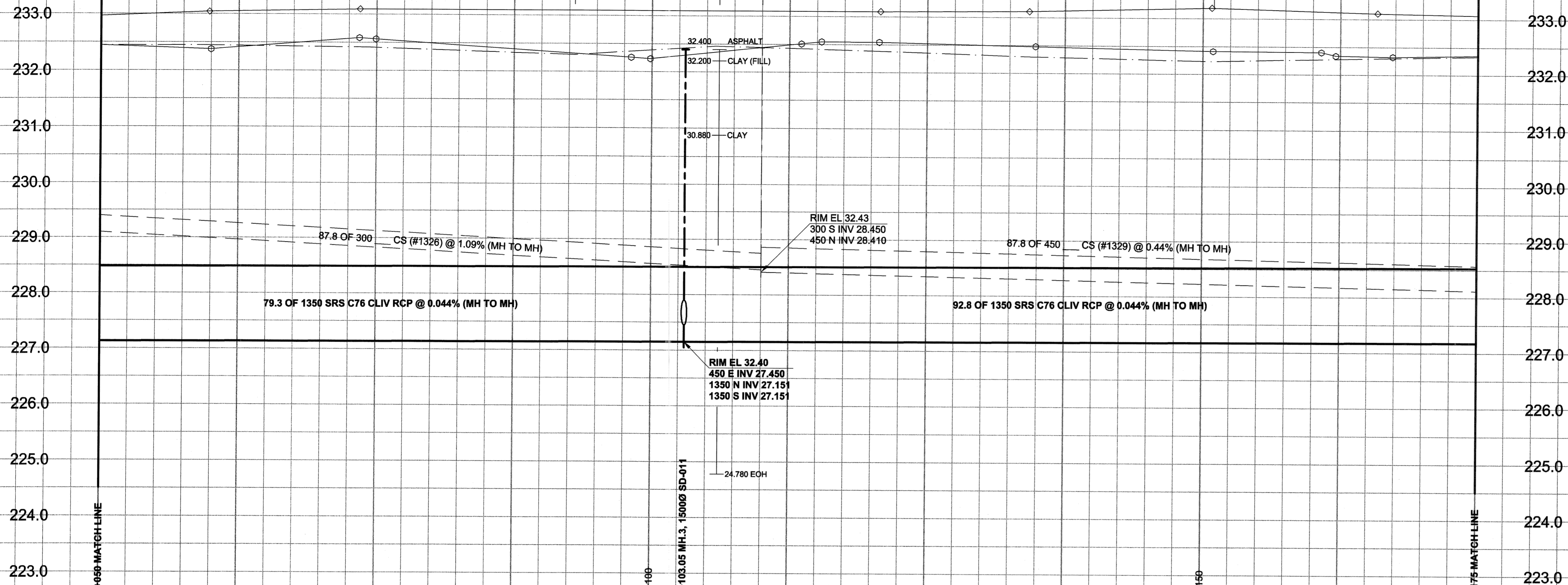


D SIZE 22" x 34" (559mm x 864mm)

PLOT: 05/05/25 10:39:54 AM

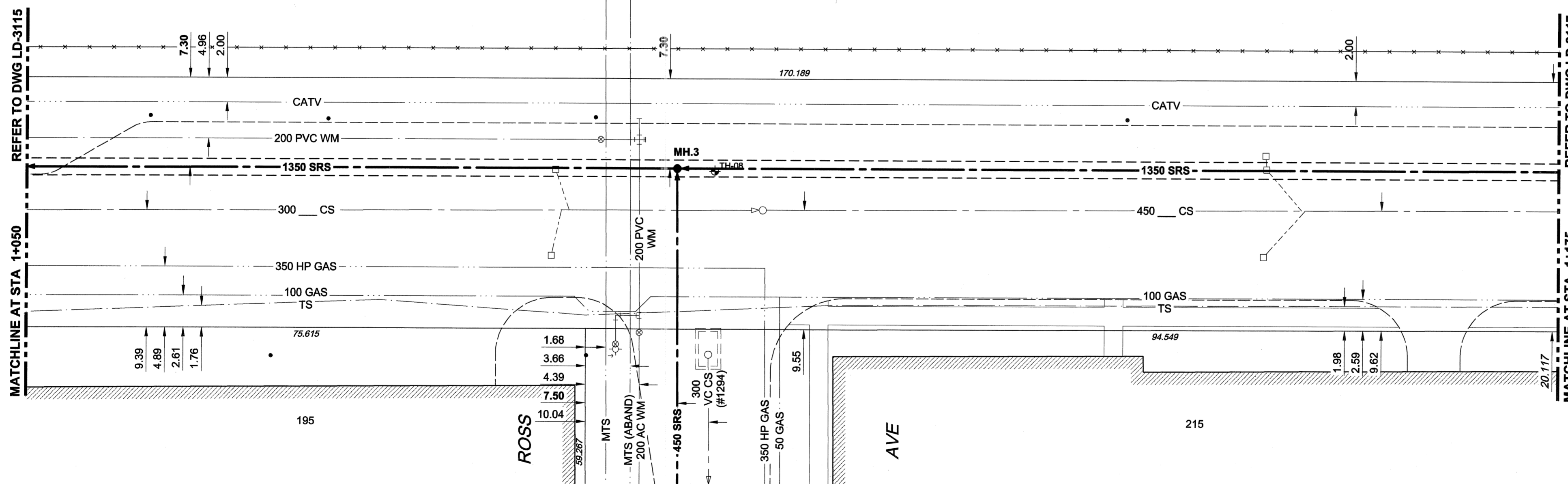
UMA FILE NAME: D265-177-01\_02-C-1002\_RX.dwg Saved By: alalippi

EXISTING FEATURES



CHAINAGE ALONG E PL

TECUMSEH STREET  
(ROAD CLOSED)



FOR FURTHER INFO  
SEE DWG LD-3124

**WARNING**

IF POWER EQUIPMENT OR EXPLOSIVES ARE TO BE USED FOR EXCAVATION ON THIS PROJECT, THE CONTRACTOR MUST:  
1) NOTIFY THE GAS COMPANY OF THE PROPOSED LOCATION OF EXCAVATION.  
2) TAKE PRECAUTION TO AVOID DAMAGE TO GAS COMPANY INSTALLATIONS.  
SEE PROVINCIAL REGULATION 140/92 FOR DETAILS

150 mm WM		150 mm WM		CURB STOP		150 mm WM		WATERMAIN		150 mm WM	
	HYDRANT		VALVE		REDUCER		COUPLING		HYDRANT		VALVE
	LAND DRAINAGE SEWER		WASTE WATER SEWER		ANODE		HYDRO		LAND DRAINAGE SEWER		WASTE WATER SEWER
	MANHOLE		CATCH BASIN		CURB INLET		CULVERT		PIPE ABANDONMENTS		SURVEY BAR
	EXISTING		LEGEND - PLAN		NEW		EXISTING		LEGEND - PROFILE		NEW

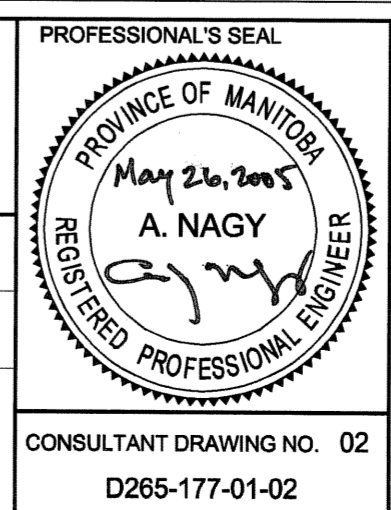
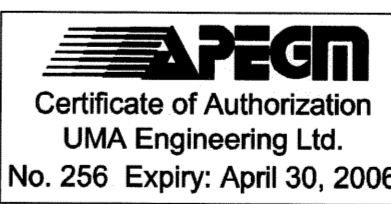
LOCATION APPROVED  
UNDERGROUND STRUCTURES

DATE  
SUPR. U/G STRUCTURES COMMITTEE  
NOTE:  
LOCATION OF UNDERGROUND STRUCTURES AS SHOWN ARE BASED ON THE BEST INFORMATION AVAILABLE. BUT NO GUARANTEE IS GIVEN THAT ALL EXISTING UTILITIES ARE SHOWN OR THAT THE GIVEN LOCATIONS ARE EXACT. CONFIRMATION OF EXISTENCE AND EXACT LOCATION OF ALL SERVICES MUST BE OBTAINED FROM THE INDIVIDUAL UTILITIES BEFORE PROCEEDING WITH CONSTRUCTION.

NO.	ISSUED FOR CONSTRUCTION	DATE	BY
0	ISSUED FOR CONSTRUCTION	05/05/25	ADL
	REVISIONS	YY/MM/DD	BY

METRIC  
WHOLE NUMBERS INDICATE MILLIMETRES  
DECIMALIZED NUMBERS INDICATE METRES

DESIGNED BY		CHECKED BY	
GEB/MM			
DRAWN BY		APPROVED BY	
ADL			
HOR. SCALE	1:250	RELEASED FOR CONSTRUCTION	
VERT. SCALE	1:50		
DATE	05/05/27	DATE	May 27/25



**THE CITY OF WINNIPEG**  
WATER AND WASTE DEPARTMENT

**ALEXANDER/BANNATYNE**  
COMBINED SEWER RELIEF  
CONTRACT 1B  
TECUMSEH STREET  
30m NORTH OF ELGIN AVENUE  
TO 15m SOUTH OF PACIFIC AVENUE

SHEET 2 OF 18  
CITY DRAWING NUMBER  
LD-3116  
REV 0

BID OPPORTUNITY NO. 137-2005

- CONSTRUCTION NOTES:**
- FOR DETAILED TEST HOLE INFORMATION, SEE SPECIFICATION.
  - THE LOCATION OF ALL SERVICES IS TO BE CONFIRMED IN THE FIELD.
  - INSTALL NEW SEWERS AND CATCHBASIN LEADS BY TRENCHLESS METHODS WHEREVER POSSIBLE.
  - RENEW/REHABILITATE CATCHBASINS & RENEW CATCHBASIN LEADS WHERE NOTED.