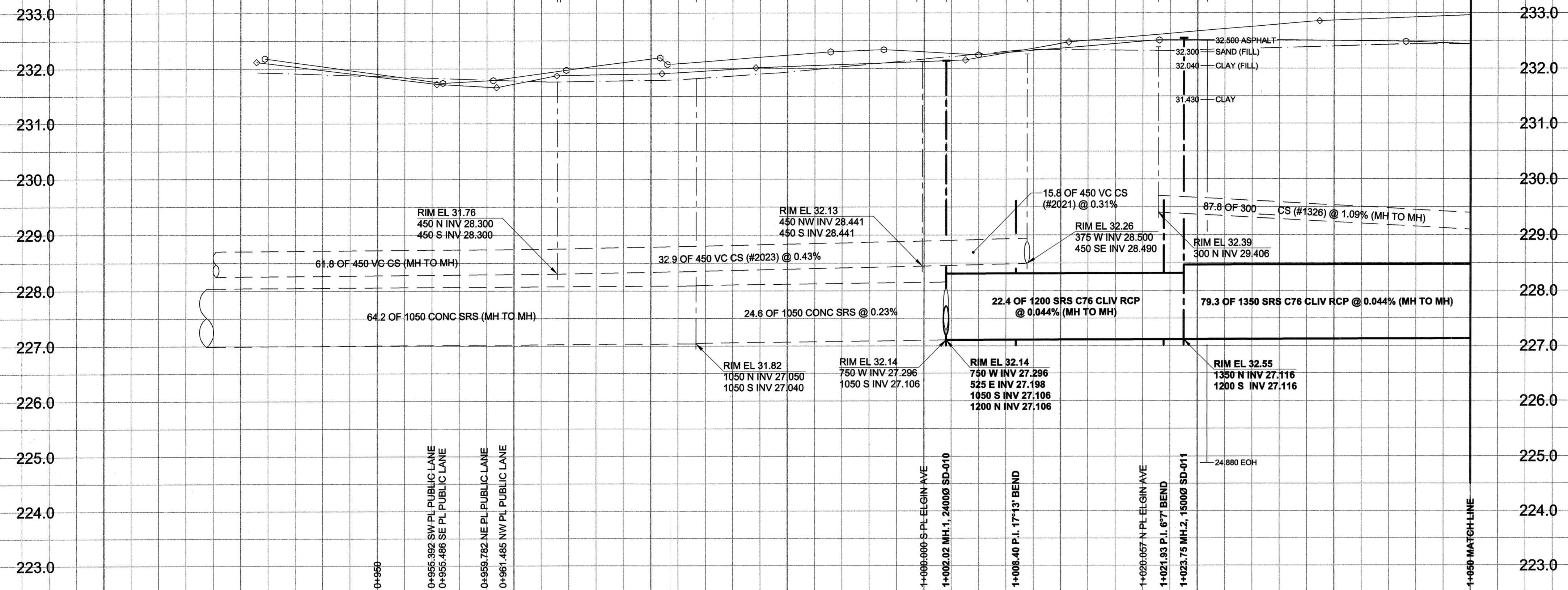
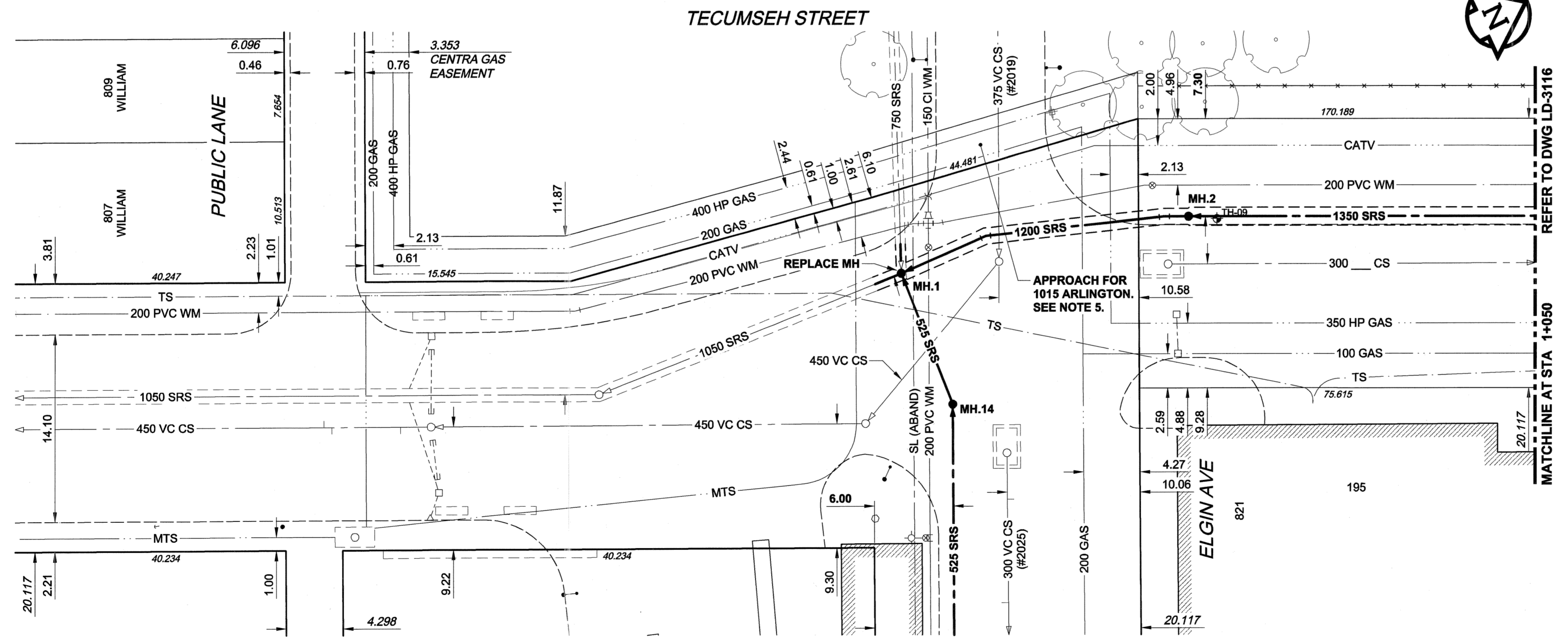


D SIZE 227 x 347 (559mm x 864mm) PLOT: 05/05/26 10:40:04 AM

EXISTING FEATURES



CHAINAGE ALONG E PL



TECUMSEH STREET



WARNING
 IF POWER EQUIPMENT OR EXPLOSIVES ARE TO BE USED FOR EXCAVATION ON THIS PROJECT, THE CONTRACTOR MUST:
 1) NOTIFY THE GAS COMPANY OF THE PROPOSED LOCATION OF EXCAVATION.
 2) TAKE PRECAUTION TO AVOID DAMAGE TO GAS COMPANY INSTALLATIONS.
 SEE PROVINCIAL REGULATION 140/92 FOR DETAILS

FOR FURTHER INFO SEE DWG LD-3122

METRIC
 WHOLE NUMBERS INDICATE MILLIMETRES
 DECIMALIZED NUMBERS INDICATE METRES

APEGM
 Certificate of Authorization
 UMA Engineering Ltd.
 No. 256 Expiry: April 30, 2006

- CONSTRUCTION NOTES:**
1. FOR DETAILED TEST HOLE INFORMATION, SEE SPECIFICATION.
 2. THE LOCATION OF ALL SERVICES IS TO BE CONFIRMED IN THE FIELD.
 3. INSTALL NEW SEWERS AND CATCHBASIN LEADS BY TRENCHLESS METHODS WHEREVER POSSIBLE.
 4. RENEW/REHABILITATE CATCHBASINS & RENEW CATCHBASIN LEADS WHERE NOTED.
 5. MAINTAIN TWO LANES OF TRAFFIC AT ALL TIMES FOR 1015 ARLINGTON.

BID OPPORTUNITY NO. 137-2005

EXISTING	LEGEND - PLAN	NEW	EXISTING	LEGEND - PLAN	NEW	EXISTING	LEGEND - PROFILE	NEW
150 mm WM	WATERMAIN	150 mm WM	CURB STOP	150 mm WM	WATERMAIN	150 mm WM	WATERMAIN	150 mm WM
○	HYDRANT	●	REDUCER	+	HYDRANT	+	HYDRANT	+
⊙	VALVE	⊙	COUPLING	⊙	VALVE	⊙	VALVE	⊙
300 mm LDS	LAND DRAINAGE SEWER	300 mm LDS	ANODE	⊙	LAND DRAINAGE SEWER	⊙	LAND DRAINAGE SEWER	⊙
250 mm WWS	WASTE WATER SEWER	250 mm WWS	HYDRO	⊙	WASTE WATER SEWER	⊙	WASTE WATER SEWER	⊙
○	MANHOLE	●	MTS	⊙	PAVEMENT CROWN	⊙	N/W PROPERTY LINE	⊙
□	CATCH BASIN	■	GAS	⊙	S/E PROPERTY LINE	⊙	N/W GUTTER	⊙
△	CURB INLET	▲	TESTHOLE	⊙	S/E GUTTER	⊙		
▭	CULVERT	▭	LAMP STANDARD	⊙				
—	PIPE ABANDONMENTS	—	TREE	⊙				
+	SURVEY BAR	+						

LOCATION APPROVED
 UNDERGROUND STRUCTURES

SUPR. U/G STRUCTURES DATE COMMITTEE

NOTE:
 LOCATION OF UNDERGROUND STRUCTURES AS SHOWN ARE BASED ON THE BEST INFORMATION AVAILABLE. BUT NO GUARANTEE IS GIVEN THAT ALL EXISTING UTILITIES ARE SHOWN OR THAT THE GIVEN LOCATIONS ARE EXACT. CONFIRMATION OF EXISTENCE AND EXACT LOCATION OF ALL SERVICES MUST BE OBTAINED FROM THE INDIVIDUAL UTILITIES BEFORE PROCEEDING WITH CONSTRUCTION.

BM 36-009	Tblt. in W. wall of the City of Winnipeg Public Works Shop, S.E. Cor. of Pacific Ave. & Tecumseh St., 0.6m S. of N.W. Cor. of Bldg.	ELEV 232.501m
NO.	ISSUED FOR CONSTRUCTION	05/05/26
ADL	BY	ADL
NO.	REVISIONS	YYMMDD

UMA | AECOM

2005 UMA ENGINEERING LTD. ALL RIGHTS RESERVED.

DESIGNED BY	GEB/MM	CHECKED BY	[Signature]
DRAWN BY	ADL	APPROVED BY	[Signature]
HOR. SCALE	1:250	RELEASED FOR CONSTRUCTION	[Signature]
VERT. SCALE	1:50	DATE	26 May 27/05

PROFESSIONAL'S SEAL
 PROVINCE OF MANITOBA
 May 26, 2005
 A. NAGY
 REGISTERED PROFESSIONAL ENGINEER

CONSULTANT DRAWING NO. 01
 D265-177-01-02

THE CITY OF WINNIPEG
 WATER AND WASTE DEPARTMENT

ALEXANDER/BANNATYNE
 COMBINED SEWER RELIEF
 CONTRACT 1B

TECUMSEH STREET
 20m NORTH OF WILLIAM AVENUE
 TO 45m SOUTH OF ROSS AVENUE

SHEET 1 OF 18
 CITY DRAWING NUMBER
LD-3115
 REV 0