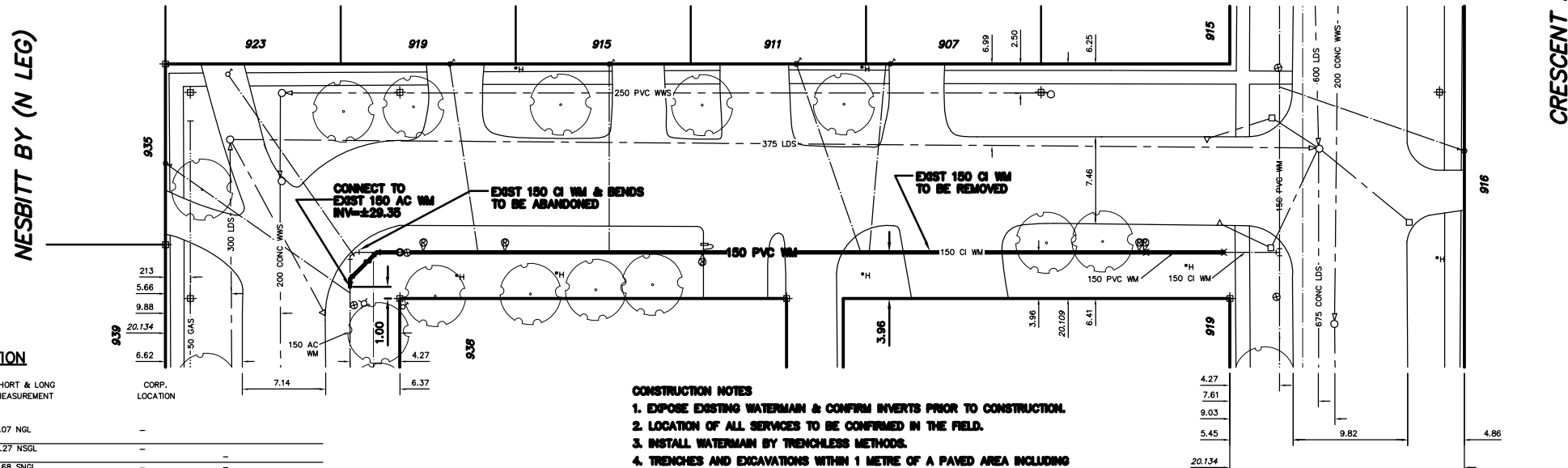


NOTE: CHAINAGES FROM NEW VALVE AT S R NESBITT BAY (N LEG) STA 2+28.74 ARE ALONG C NEW WATERMAIN

NOTE: CHAINAGES SHOWN ARE ALONG W R NESBITT BAY (E LEG) TO NEW VALVE AT S R NESBITT BAY (N LEG) STA 2+28.74

NESBITT BAY (E LEG)



WATER SERVICE INFORMATION

ADDRESS	SIZE(mm) & TYPE (STREET)	SIZE(mm) & TYPE (PROP)	SHORT & LONG MEASUREMENT	CORP. LOCATION
907 NESBITT BAY RESIDENTIAL	20 COPPER	20 COPPER	1.07 NSGL	-
911 NESBITT BAY RESIDENTIAL	20 COPPER	20 COPPER	4.27 NSGL	-
915 NESBITT BAY RESIDENTIAL	20 COPPER	20 COPPER	1.68 NSGL	-
919 NESBITT BAY RESIDENTIAL	20 COPPER	20 COPPER	3.96 NSGL	-
923 NESBITT BAY RESIDENTIAL	20 COPPER	20 COPPER	9.45 S HYD	-
915 CRESCENT DR RESIDENTIAL	20 COPPER	20 COPPER	6.25 SNPL	6.71 WEHL
916 CRESCENT DR RESIDENTIAL	20 COPPER	20 COPPER	5.18 WEHL	5.49 E S/C
919 CRESCENT DR RESIDENTIAL	20 COPPER	20 COPPER	1.52 WEHL	1.52 E SC
918 CRESCENT DR RESIDENTIAL	20 COPPER	20 COPPER	34.75 W HYD	-
917 CRESCENT DR RESIDENTIAL	20 COPPER	20 COPPER	1.22 WEHL	-
916 CRESCENT DR RESIDENTIAL	20 COPPER	20 COPPER	15.85 W HYD	-

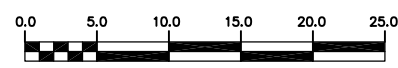
* SERVICES TO BE RENEWED TO R ALL OTHERS TO BE RECONNECTED

CONSTRUCTION NOTES

1. EXPOSE EXISTING WATERMAIN & CONFIRM INVERTS PRIOR TO CONSTRUCTION.
2. LOCATION OF ALL SERVICES TO BE CONFIRMED IN THE FIELD.
3. INSTALL WATERMAIN BY TRENCHLESS METHODS.
4. TRENCHES AND EXCAVATIONS WITHIN 1 METRE OF A PAVED AREA INCLUDING SIDEWALKS SHALL BE CLASS 3 BACKFILL.
5. ALL MATERIALS SHALL CONFORM TO THE CITY OF WINNIPEG STANDARD CONSTRUCTION SPECIFICATIONS.
6. MINIMUM COVER TO TOP OF WATERMAIN SHALL BE 2.4 m.
7. REPLACE ALL EXISTING LEAD SERVICES FROM PROPOSED WATERMAIN TO R.
8. NOTIFY ALL AFFECTED RESIDENTS AND BUSINESSES 24 HOURS IN ADVANCE OF ANY WATER SHUTDOWNS OR DISRUPTION OF SERVICE.

METRIC
WHOLE NUMBERS INDICATE MILLIMETRES
DECIMALIZED NUMBERS INDICATE METRES
NOTE: ALL VALVES TO BE INSTALLED COUNTERCLOCKWISE TO CLOSE

WARNING
IF POWER EQUIPMENT OR EXPLOSIVES ARE TO BE USED FOR EXCAVATION ON THIS PROJECT THE CONTRACTOR MUST:
1) NOTIFY THE GAS COMPANY OF THE PROPOSED LOCATION OF EXCAVATION.
2) TAKE PRECAUTION TO AVOID DAMAGE TO GAS COMPANY INSTALLATIONS.
SEE PROVINCIAL REGULATION 210/72 FOR DETAILS



200 WM	WATERMAIN	200 WM	SL, HYDRO	150 WM	WATERMAIN	150 WM
⊕	HYDRANT	⊕	MTS	⊕	HYDRANT	⊕
⊙	VALVE	⊙	TRAFFIC SIGNALS	⊙	VALVE	⊙
525 LDS	LAND DRAINAGE SEWER	525 LDS	GAS	50 GAS	300 LDS	LAND DRAINAGE SEWER
375 WWS	WASTEWATER SEWER	375 WWS	SURVEY BAR	250 WWS	250 WWS	WASTEWATER SEWER
○	MANHOLE	○	FENCE	⊕	PROFILE	⊕
□	CATCH BASIN	□	POLE - HYDRO, MTS	⊕	GROUND ABOVE PIPE	⊕
▽	CURB INLET	▽	CURB STOP	⊕	DITCH (NORTH & WEST)	⊕
◁	REDUCER	◁	GUY ANCHOR	⊕	DITCH (SOUTH & EAST)	⊕
X	COUPLER	X	LIGHT STANDARD	⊕	GUTTER (NORTH & WEST)	⊕
⊕	ANODE	⊕	TREE	⊕	GUTTER (SOUTH & EAST)	⊕
EXISTING	LEGEND-PLAN	PROPOSED	EXISTING	LEGEND-PLAN	PROPOSED	EXISTING

LOCATION APPROVED UNDERGROUND STRUCTURES	B.M. ELEV.	FIELD BOOK #
SUPV. U/G STRUCTURES COMMITTEE		
DATE		
NOTE: LOCATION OF UNDERGROUND STRUCTURES AS SHOWN ARE BASED ON THE BEST INFORMATION AVAILABLE BUT NO GUARANTEE IS GIVEN THAT ALL EXISTING UTILITIES ARE SHOWN OR THAT THE GIVEN LOCATIONS ARE EXACT. CONFIRMATION OF EXISTENCE AND EXACT LOCATION OF ALL SERVICES MUST BE OBTAINED FROM THE INDIVIDUAL UTILITIES BEFORE PROCEEDING WITH CONSTRUCTION.		
NO. REVISIONS	DATE	BY

CITY OF WINNIPEG WATER AND WASTE ENGINEERING DIVISION

DESIGNED BY: SC
CHECKED BY: KZ

DRAWN BY: BW
APPROVED BY: KZ

HOR. SCALE: 1:250
VERTICAL SCALE: 1:50

DATE: 2005 03 18

ENGINEER'S SEAL
ORIGINAL SIGNED BY K.R. ZUREK
05/03/18

THE CITY OF WINNIPEG WATER AND WASTE DEPARTMENT

2005 WATERMAIN RENEWALS
NESBITT BAY (E LEG)
N LEG NESBITT BAY TO CRESCENT DRIVE

SHEET 6 OF 18
CITY DRAWING NUMBER
D-8667

BID OPPORTUNITY: 135-2005
FILENAME: D-8667_Nesbitt.dwg
PLOT DATE: 2005 03 21