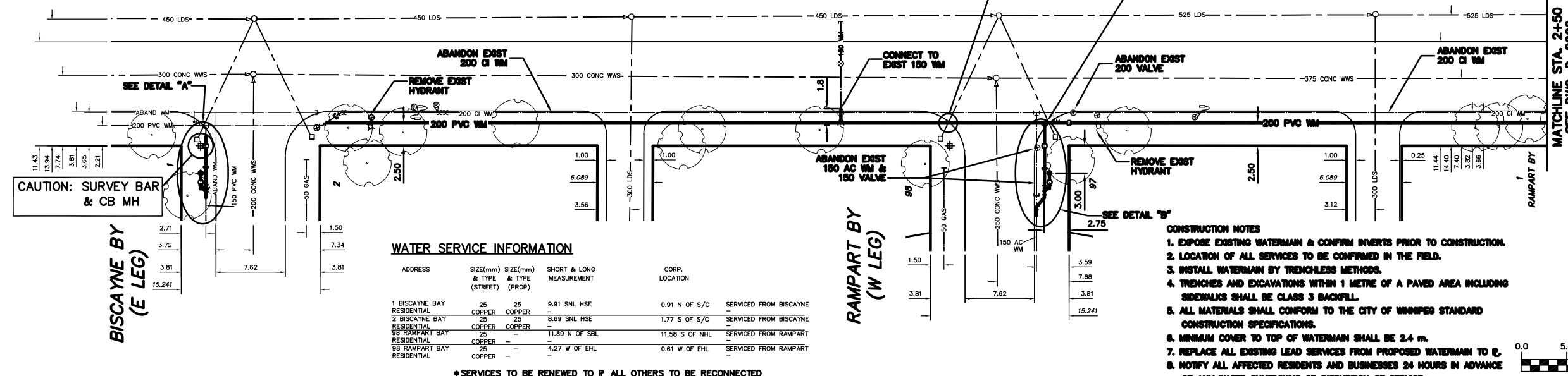
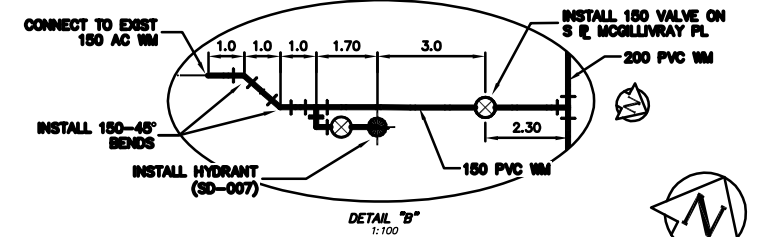


NOTE: CHAINAGES SHOWN ARE ALONG S R OF MCGILLIVRAY PLACE

MCGILLIVRAY PLACE



WATER SERVICE INFORMATION

| ADDRESS | SIZE (mm) | SIZE (mm) & TYPE (PROP) | SHORT & LONG MEASUREMENT | CORP. LOCATION | SERVICED FROM |
|----------------------------|-----------|-------------------------|--------------------------|----------------|------------------------|
| 1 BISCAYNE BAY RESIDENTIAL | 25 | 25 COPPER | 9.91 S/NL HSE | 0.91 N OF S/C | SERVICED FROM BISCAYNE |
| 2 BISCAYNE BAY RESIDENTIAL | 25 | 25 COPPER | 8.69 S/NL HSE | 1.77 S OF S/C | SERVICED FROM BISCAYNE |
| 98 RAMPART BAY RESIDENTIAL | 25 | 25 COPPER | 11.89 N OF SBL | 11.58 S OF NHL | SERVICED FROM RAMPART |
| 98 RAMPART BAY RESIDENTIAL | 25 | 25 COPPER | 4.27 W OF EHL | 0.61 W OF EHL | SERVICED FROM RAMPART |

• SERVICES TO BE RENEWED TO R ALL OTHERS TO BE RECONNECTED

CONSTRUCTION NOTES

1. EXPOSE EXISTING WATERMAIN & CONFIRM INVERTS PRIOR TO CONSTRUCTION.
2. LOCATION OF ALL SERVICES TO BE CONFIRMED IN THE FIELD.
3. INSTALL WATERMAIN BY TRENCHLESS METHODS.
4. TRENCHES AND EXCAVATIONS WITHIN 1 METRE OF A PAVED AREA INCLUDING SIDEWALKS SHALL BE CLASS 3 BACKFILL.
5. ALL MATERIALS SHALL CONFORM TO THE CITY OF WINNIPEG STANDARD CONSTRUCTION SPECIFICATIONS.
6. MINIMUM COVER TO TOP OF WATERMAIN SHALL BE 2.4 m.
7. REPLACE ALL EXISTING LEAD SERVICES FROM PROPOSED WATERMAIN TO R.
8. NOTIFY ALL AFFECTED RESIDENTS AND BUSINESSES 24 HOURS IN ADVANCE OF ANY WATER SHUTDOWNS OR DISRUPTION OF SERVICE.

METRIC
WHOLE NUMBERS INDICATE MILLIMETRES
DECIMALIZED NUMBERS INDICATE METRES
NOTE: ALL VALVES TO BE INSTALLED COUNTERCLOCKWISE TO CLOSE

WARNING
IF POWER EQUIPMENT OR EXPLOSIVES ARE TO BE USED FOR EXCAVATION ON THIS PROJECT THE CONTRACTOR MUST:
1) NOTIFY THE GAS COMPANY OF THE PROPOSED LOCATION OF EXCAVATION.
2) TAKE PRECAUTION TO AVOID DAMAGE TO GAS COMPANY INSTALLATIONS.
SEE PROVINCIAL REGULATION 210/72 FOR DETAILS



| EXISTING | LEGEND-PLAN | PROPOSED | EXISTING | LEGEND-PLAN | PROPOSED | EXISTING | LEGEND-PROFILE | PROPOSED |
|----------|---------------------|----------|-------------------|-------------|-------------------|----------|---------------------|----------|
| 200 WM | WATERMAIN | 200 WM | SL, HYDRO | 50 GAS | 50 GAS | 300 LDS | LAND DRAINAGE SEWER | 300 LDS |
| 525 LDS | LAND DRAINAGE SEWER | 525 LDS | 50 GAS | 300 LDS | 300 LDS | 300 LDS | LAND DRAINAGE SEWER | 300 LDS |
| 375 WWS | WASTEWATER SEWER | 375 WWS | 375 WWS | 375 WWS | 375 WWS | 375 WWS | WASTEWATER SEWER | 375 WWS |
| ○ | MANHOLE | ○ | MANHOLE | ○ | MANHOLE | ○ | MANHOLE | ○ |
| □ | CATCH BASIN | □ | CATCH BASIN | □ | CATCH BASIN | □ | CATCH BASIN | □ |
| ▽ | CURB INLET | ▽ | CURB INLET | ▽ | CURB INLET | ▽ | CURB INLET | ▽ |
| ◁ | REDUCER | ◁ | REDUCER | ◁ | REDUCER | ◁ | REDUCER | ◁ |
| X | COUPLER | X | COUPLER | X | COUPLER | X | COUPLER | X |
| ⊕ | ANODE | ⊕ | ANODE | ⊕ | ANODE | ⊕ | ANODE | ⊕ |
| ○ | HYDRANT | ○ | HYDRANT | ○ | HYDRANT | ○ | HYDRANT | ○ |
| ○ | VALVE | ○ | VALVE | ○ | VALVE | ○ | VALVE | ○ |
| ○ | TRAFFIC SIGNALS | ○ | TRAFFIC SIGNALS | ○ | TRAFFIC SIGNALS | ○ | TRAFFIC SIGNALS | ○ |
| ○ | GAS | ○ | GAS | ○ | GAS | ○ | GAS | ○ |
| ○ | SURVEY BAR | ○ | SURVEY BAR | ○ | SURVEY BAR | ○ | SURVEY BAR | ○ |
| ○ | FENCE | ○ | FENCE | ○ | FENCE | ○ | FENCE | ○ |
| ○ | POLE - HYDRO, MTS | ○ | POLE - HYDRO, MTS | ○ | POLE - HYDRO, MTS | ○ | POLE - HYDRO, MTS | ○ |
| ○ | CURB STOP | ○ | CURB STOP | ○ | CURB STOP | ○ | CURB STOP | ○ |
| ○ | GUY ANCHOR | ○ | GUY ANCHOR | ○ | GUY ANCHOR | ○ | GUY ANCHOR | ○ |
| ○ | LIGHT STANDARD | ○ | LIGHT STANDARD | ○ | LIGHT STANDARD | ○ | LIGHT STANDARD | ○ |
| ○ | TREE | ○ | TREE | ○ | TREE | ○ | TREE | ○ |

| LOCATION APPROVED UNDERGROUND STRUCTURES | DATE |
|--|------|
| SUPV. U/G STRUCTURES COMMITTEE | |

| B.M. ELEV. | FIELD BOOK # |
|------------|--------------|
| | |

CITY OF WINNIPEG WATER AND WASTE ENGINEERING DIVISION

DESIGNED BY: SC
DRAWN BY: CJH/BW
HOR. SCALE: 1:250
VERTICAL: 1:50
DATE: 2005 03 18

CHECKED BY: KZ
APPROVED BY: KZ
RELEASED FOR CONSTRUCTION: DATE

ENGINEER'S SEAL
ORIGINAL SIGNED BY K.R. ZUREK 05/03/18

THE CITY OF WINNIPEG WATER AND WASTE DEPARTMENT

2005 WATERMAIN RENEWALS
McGILLIVRAY PLACE
E LEG BISCAYNE BAY TO E LEG RAMPART BAY

SHEET 4 OF 18
CITY DRAWING NUMBER
D-8666