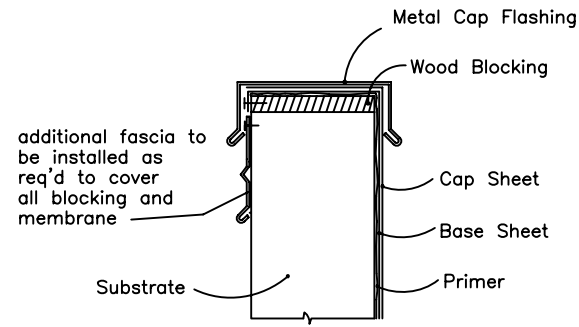
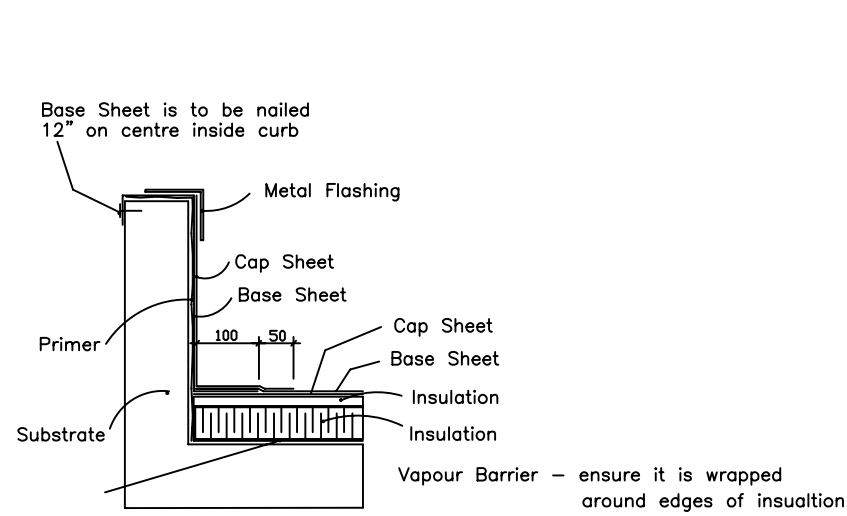
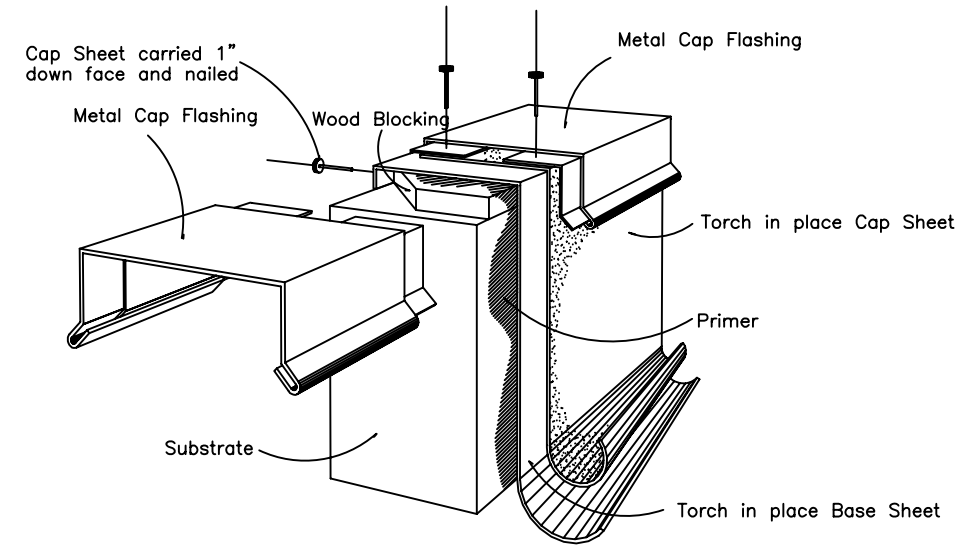


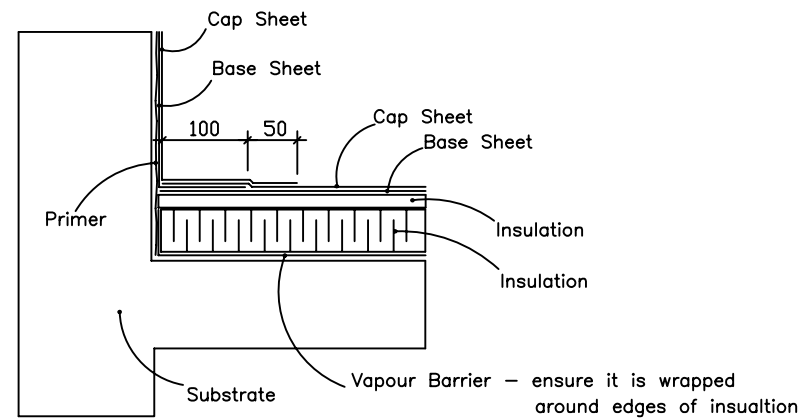
# Mechanical Curb Flashing



# Typical Parapet Cap

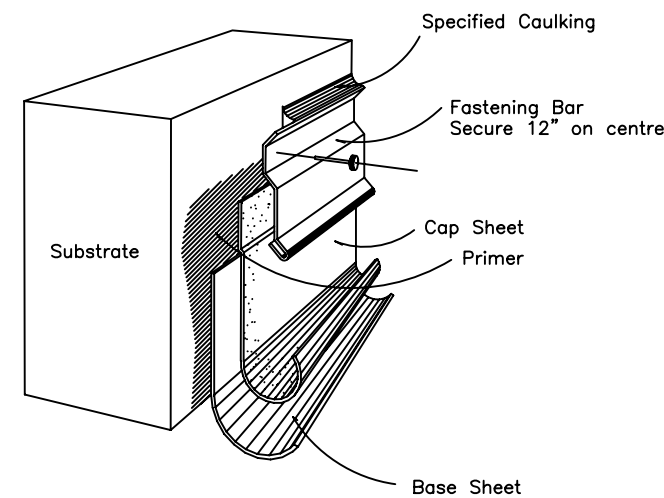


# Typical Roof Edge Detail



Note: Modified Bitumen stripping used in conjunction with 4 ply felt membrane is to have base sheet extend 12" onto flat and cap sheet 18" onto flat.

# Typical Fastening Bar



Note: Details are to be similar for inverted roof assemblies

<b>AGASSIZ CONSULTING GROUP</b>	
809 Pipeline Road, Winnipeg, Manitoba Phone: 697-8091 Fax: 697-8039	
Project:	St. James Civic Center 2055 Ness Avenue Winnipeg, MB
Date:	January 11, 2005
Drawing No.	D-1
File no:	3705-04
Scale:	N.T.S.