

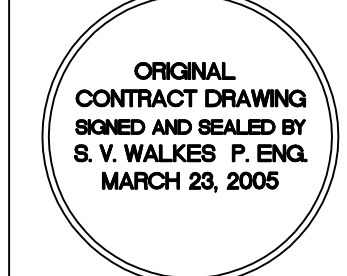
REVISIONS		
NO.	DATE	PARTICULARS
1	05-03-23	EXPANDED TENDER

NOTES



SMS ENGINEERING
 SMS Engineering Ltd. Consulting Engineers
 770 Inland Street Winnipeg MB Canada R2M 0K3
 Telephone: 204.772.0291 Fax: 204.772.2153
 sms@smseng.com
 03-514-01

PROFESSIONAL SEALS



THIS DRAWING MUST NOT BE SCALED.
 THE CONTRACTOR SHALL VERIFY ALL DIMENSIONS AND OTHER DATA ON SITE PRIOR TO COMMENCEMENT OF WORK. THE CONTRACTOR'S RECORDS AND DIMENSIONS ARE TO BE REPORTED TO THE ARCHITECT.
 DRAWING AND SPECIFICATIONS, AS INSTRUMENTS OF SERVICE, ARE THE PROPERTY OF THE ARCHITECT. THE COPYRIGHT IN THE SAME BEING RESERVED TO HIM.
 NO REPRODUCTION MAY BE MADE WITHOUT THE PERMISSION OF THE ARCHITECT. ALL PRINTS TO BE RETURNED TO THE ARCHITECT ON REQUEST.

200 -141 Bannatyne Avenue, Winnipeg, Manitoba R3B 0R3
 Telephone - 204.956.0938 Facsimile - 204.943.5597

PROJECT TITLE
RED RIVER COMMUNITY CENTRE REDEVELOPMENT

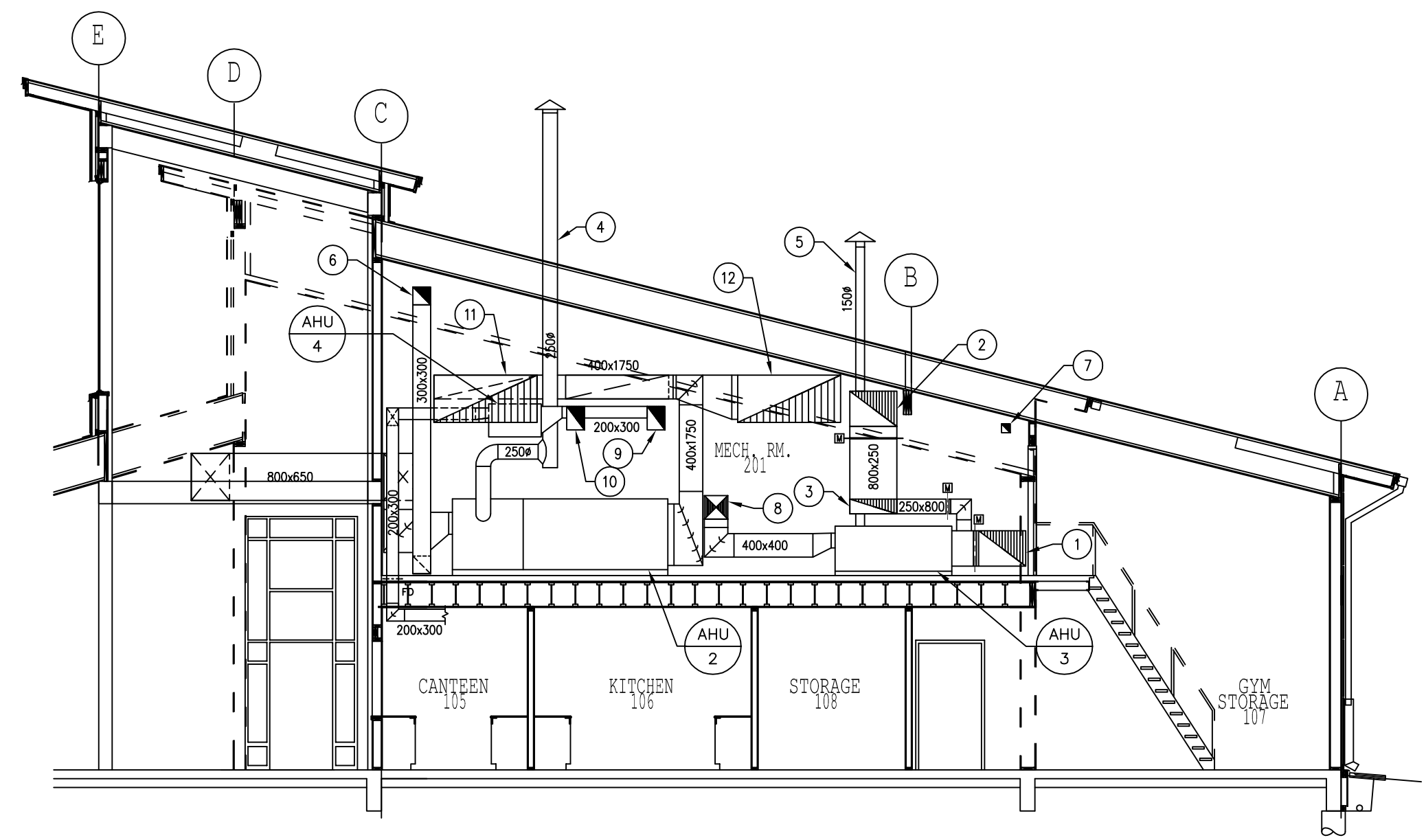
LOCATION
 WINNIPEG, MB
 933 MURRAY AVENUE

DRAWING TITLE
SECTIONS AND DETAILS

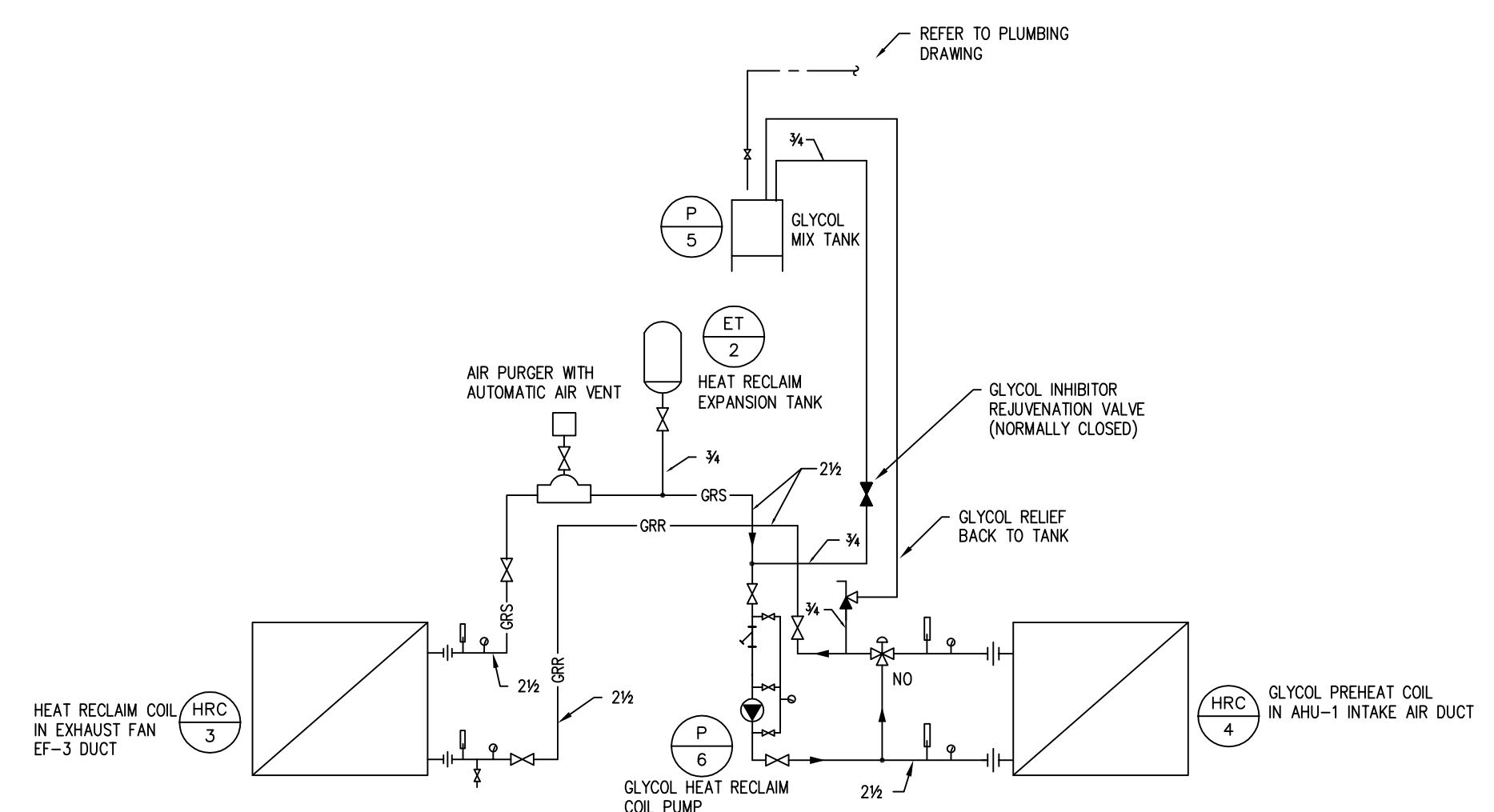
DRAWN GM	APPROVED GM	DRAWING M3-1
SCALE 1:75	DATE ISSUED 05-03-23	REVISION R-1
JOB NUMBER 03-514-01	DATE PLOTTED 05-03-23	

DRAWING NOTES: ##

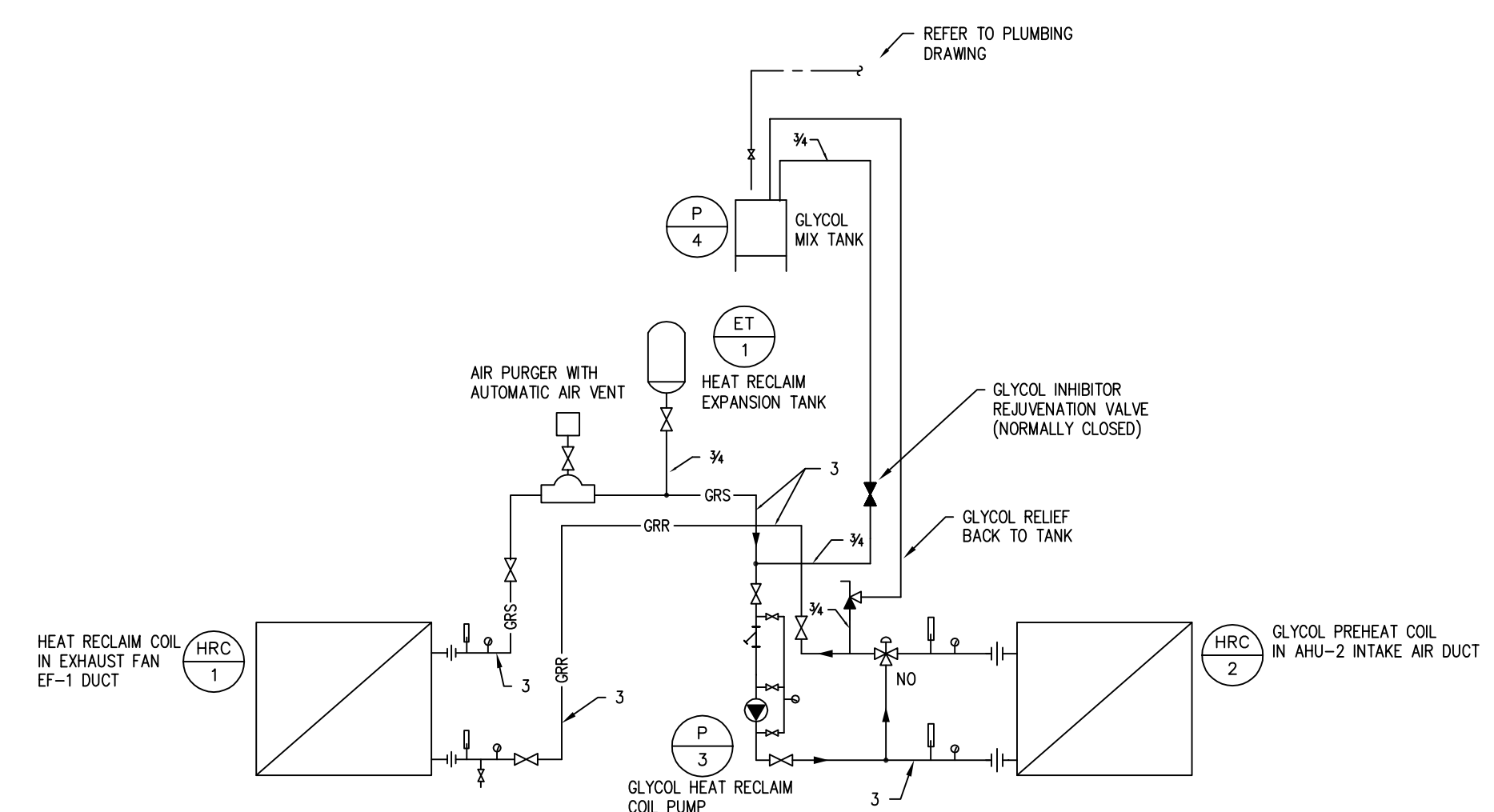
- 800x600 OUTSIDE AIR INTAKE LOUVRE.
- 800x600 RELIEF AIR LOUVRE.
- 800x250 RETURN AIR DUCT FROM MULTI-PURPOSE ROOM.
- 250ø GAS VENT FROM AIR UNIT. REFER TO ARCHITECTURAL FOR EXACT LOCATION.
- 150ø GAS VENT FROM AIR UNIT. REFER TO ARCHITECTURAL FOR EXACT LOCATION.
- 300x300 INSULATED COMBUSTION AIR WALL HOOD.
- 150x150 VENTILATION AIR WALL HOOD.
- 400x400 SUPPLY AIR DUCT TO MULTI-PURPOSE ROOM.
- 300x400 RELIEF AIR LOUVRE.
- 300x400 OUTSIDE AIR INTAKE LOUVRE.
- 1750x800 OUTSIDE AIR INTAKE LOUVRE.
- 1750x800 RELIEF AIR LOUVRE.



SECTION M3-1
SCALE 1:75



WEST MECHANICAL ROOM - HEAT RECLAIM GLYCOL RUN AROUND PIPING SCHEMATIC
SCALE N.T.S.



EAST MECHANICAL ROOM - HEAT RECLAIM GLYCOL RUN AROUND PIPING SCHEMATIC
SCALE N.T.S.

3514Ms2.dwg 12-21-04 11:56:49 a.m. CST