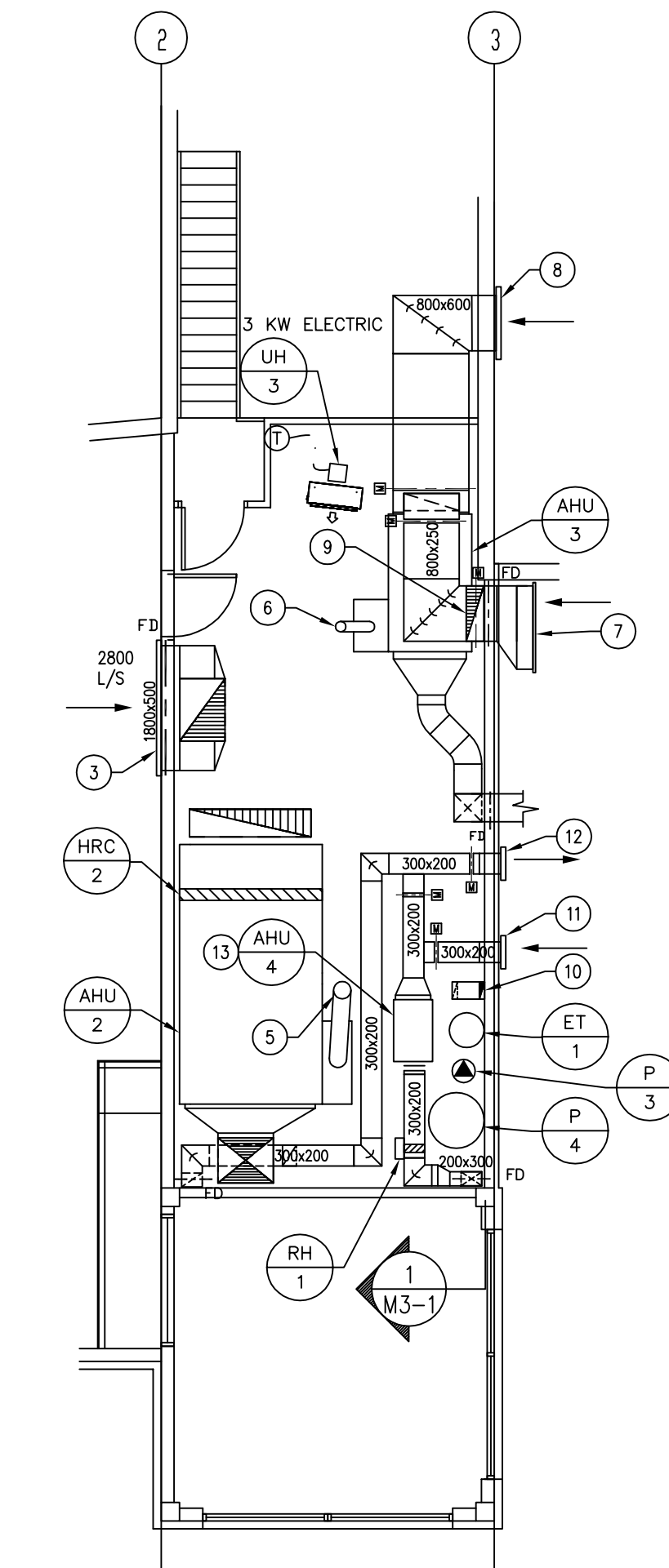


REVISIONS		
NO.	DATE	PARTICULARS
1	05-03-23	EXPANDED TENDER

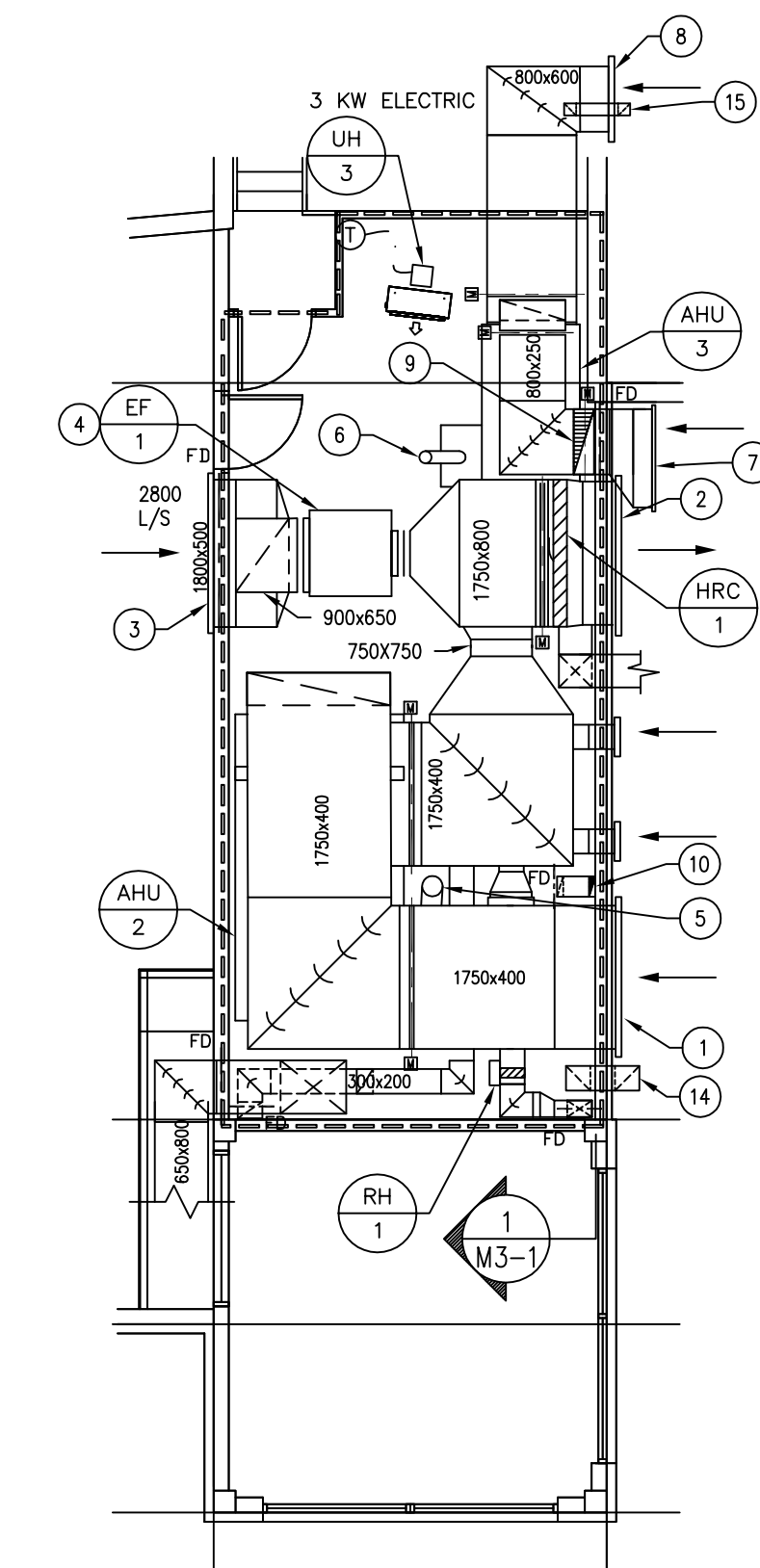
NOTES

**DRAWING NOTES: ##**

- 1750x800 OUTDOOR INTAKE LOUVRE COMPLETE WITH BIRDSCREEN.
- 1750x800 EXHAUST AIR LOUVRE COMPLETE WITH BIRDSCREEN.
- E.H.PRICE MODEL 1800x500/95/L/A/B12 EXHAUST AIR GRILLE. BALANCE TO AIR QUANTITIES AS SHOWN.
- EXHAUST FAN HUNG FROM STRUCTURE COMPLETE WITH FLEXIBLE DUCT CONNECTIONS AND VIBRATION ISOLATORS.
- 250# GAS VENT UP THROUGH ROOF TO 900 ABOVE ROOF COMPLETE WITH RAIN CAP. COORDINATE W/ ARCHITECTURAL.
- 150# GAS VENT UP THROUGH ROOF TO 900 ABOVE ROOF COMPLETE WITH RAIN CAP. COORDINATE W/ ARCHITECTURAL.
- E.H.PRICE MODEL 1200x200/95/C/L/A/B12 RETURN AIR GRILLE.
- 800x600 OUTSIDE AIR INTAKE LOUVRE COMPLETE WITH BIRDSCREEN.
- 800x250 RELIEF AIR DUCT UP TO 850x600 LOUVRE COMPLETE WITH BIRDSCREEN AND MOTORIZED DAMPER.
- 250x75 RANGE HOOD EXHAUST DUCT UP THROUGH ROOF COMPLETE WITH FIRE RATED ENCLOSURE THROUGH MEZZANINE AND C/W GREENHECK MODEL RJ ROOF CAP.
- 300x400 OUTSIDE AIR INTAKE LOUVRE COMPLETE WITH BIRDSCREEN.
- 300x400 RELIEF AIR LOUVRE COMPLETE WITH BIRDSCREEN.
- FAN COIL AHU-2 SUSPENDED FROM STRUCTURE COMPLETE WITH VIBRATION ISOLATORS AND FLEXIBLE DUCT CONNECTIONS.
- 300x300 INSULATED COMBUSTION AIR WALL HOOD COMPLETE WITH BIRDSCREEN. DUCT DOWN TO FLOOR AND PROVIDE ESKIMO TRAP.
- 150x150 INSULATED VENTILATION AIR WALL HOOD COMPLETE WITH DUCT TURNED UP AT HIGH LEVEL.



**LOWER MEZZANINE FLOOR PLAN**  
SCALE 1:75

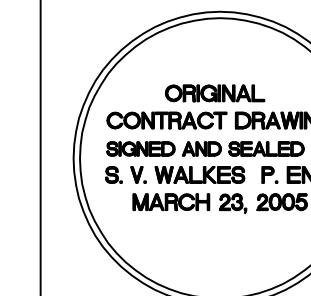


**UPPER MEZZANINE FLOOR PLAN**  
SCALE 1:75



**SMS ENGINEERING**  
SMS Engineering Ltd. Consulting Engineers  
770 Bedford Street Winnipeg MB Canada R3H 0K3  
Telephone: 204.773.0291 Fax: 204.772.2153  
sms@smseng.com

PROFESSIONAL SEALS



THIS DRAWING MUST NOT BE SCALED.  
THE CONTRACTOR SHALL VERIFY ALL DIMENSIONS AND OTHER DATA ON SITE BEFORE TO PROCEED WITH WORK. ALL DISCREPANCIES, ERRORS, AND OMISSIONS ARE TO BE REPORTED TO THE ARCHITECT.  
DRAWING AND SPECIFICATIONS, AS INSTRUMENTS OF SERVICE, ARE THE PROPERTY OF THE ARCHITECT. THE CONTRACTOR HAS SOLE RESPONSIBILITY TO THEM.  
NO REPRODUCTION MAY BE MADE WITHOUT THE PERMISSION OF THE ARCHITECT AND WHEN MADE, MUST BE RETURNED TO THE ARCHITECT ON REQUEST.

200 -141 Bannatyne Avenue, Winnipeg, Manitoba R3B 0K3  
Telephone - 204.956.0938 Facsimile - 204.943.5597

PROJECT TITLE

**RED RIVER  
COMMUNITY CENTRE  
REDEVELOPMENT**

LOCATION  
WINNIPEG, MB  
233 MURRAY AVENUE

CLIENT  
THE CITY OF WINNIPEG

DRAWING TITLE  
**Mezzanine Floor Plans  
HVAC**

DRAWN GM	APPROVED VSW	DRAWING M2-2
-------------	-----------------	-----------------

SCALE 1:75	DATE ISSUED 05-03-23
---------------	-------------------------

JOB NUMBER 03-514-01	DATE PLOTTED 05-03-23	REVISION R-1
-------------------------	--------------------------	-----------------