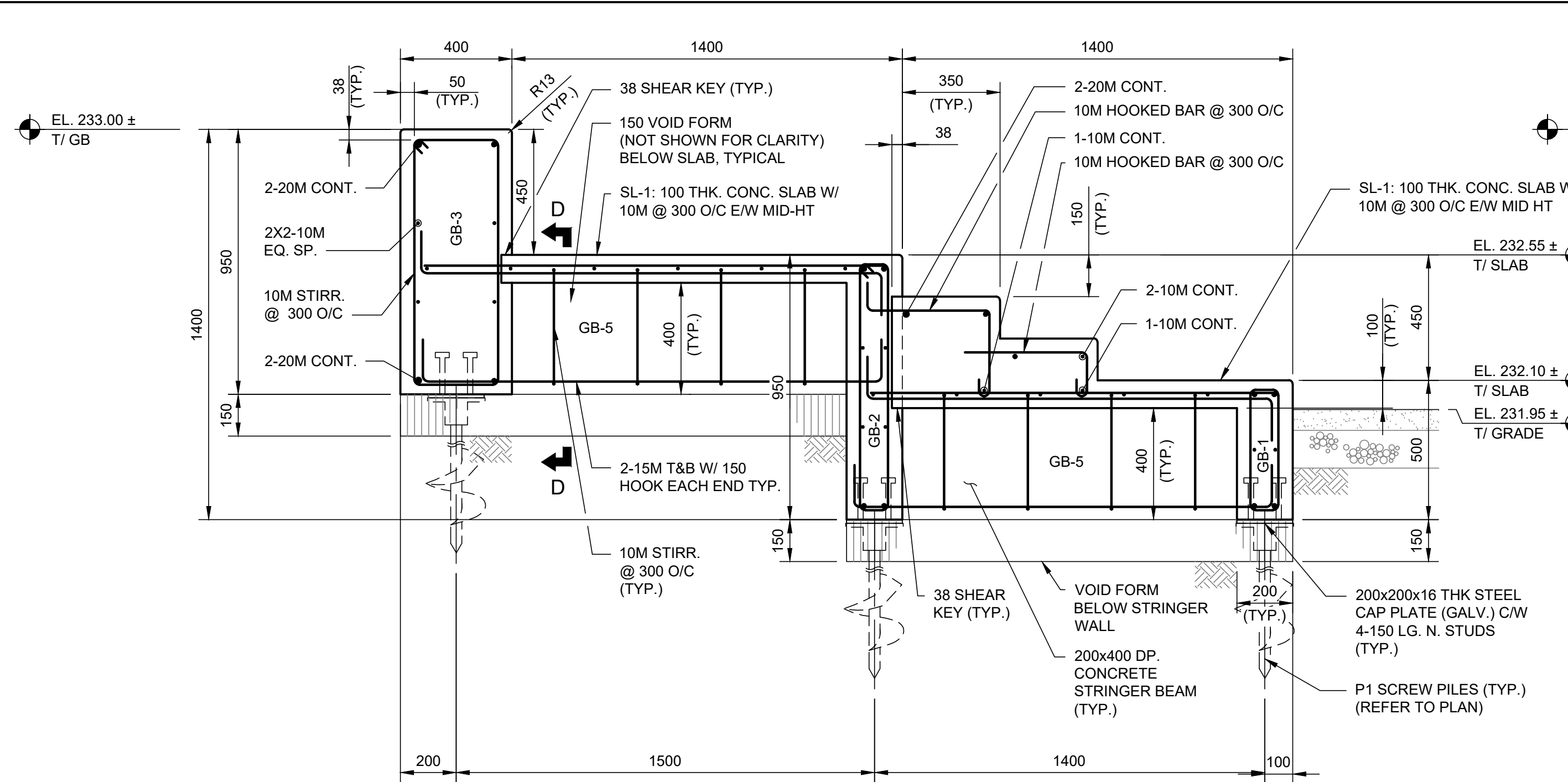
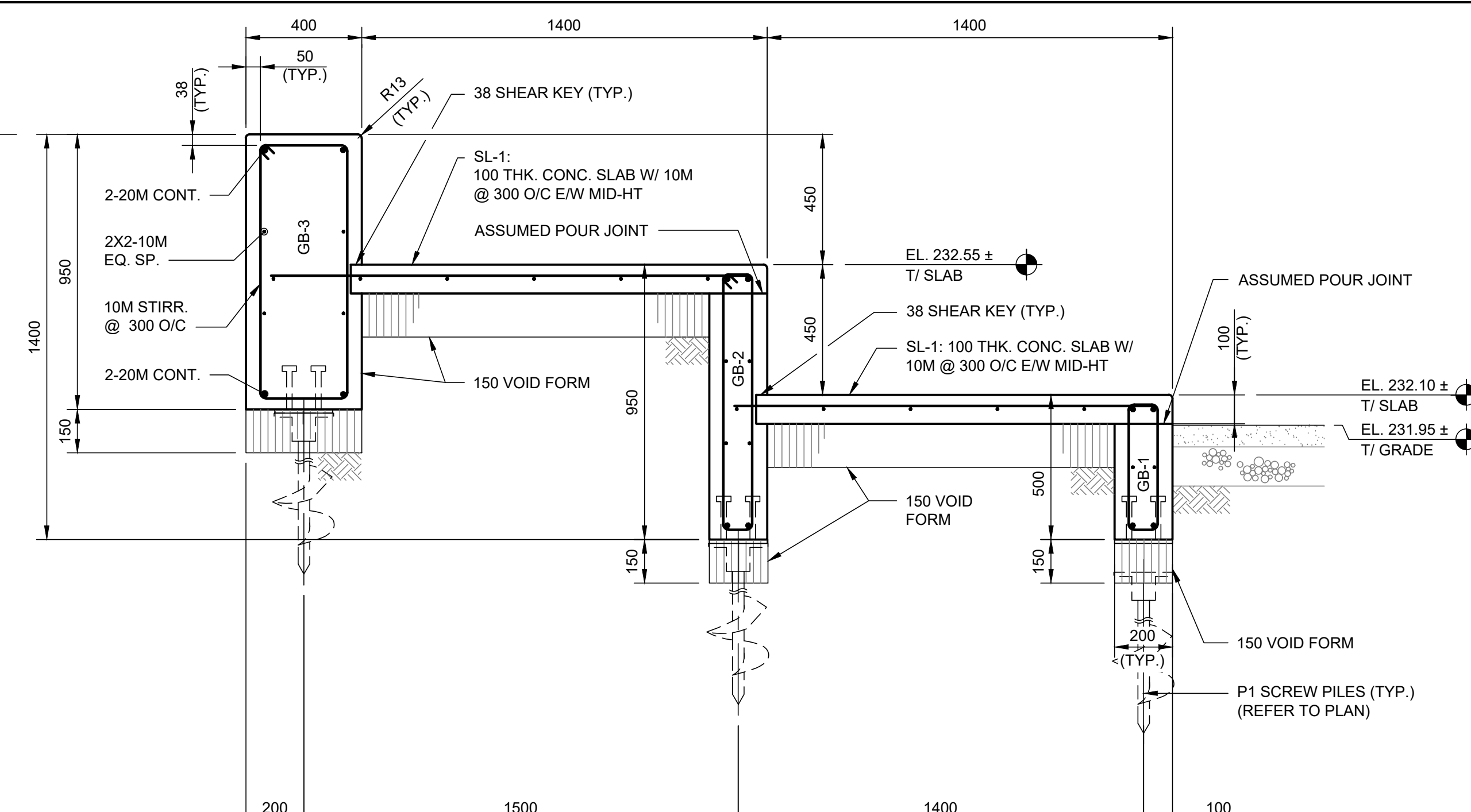


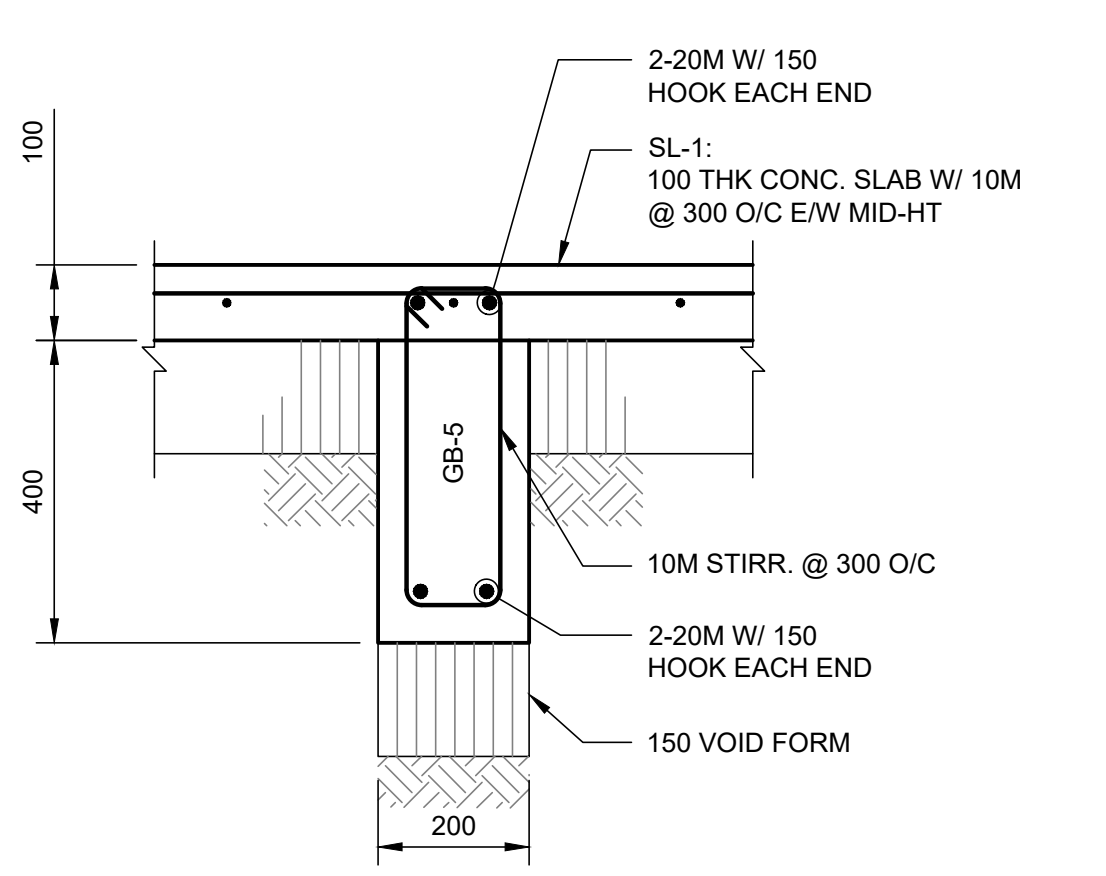
sheet title: Super A1 24' x 36' plotsize: 11 (metric) CAD File Name: 23-0109-004\_S2.0.dwg



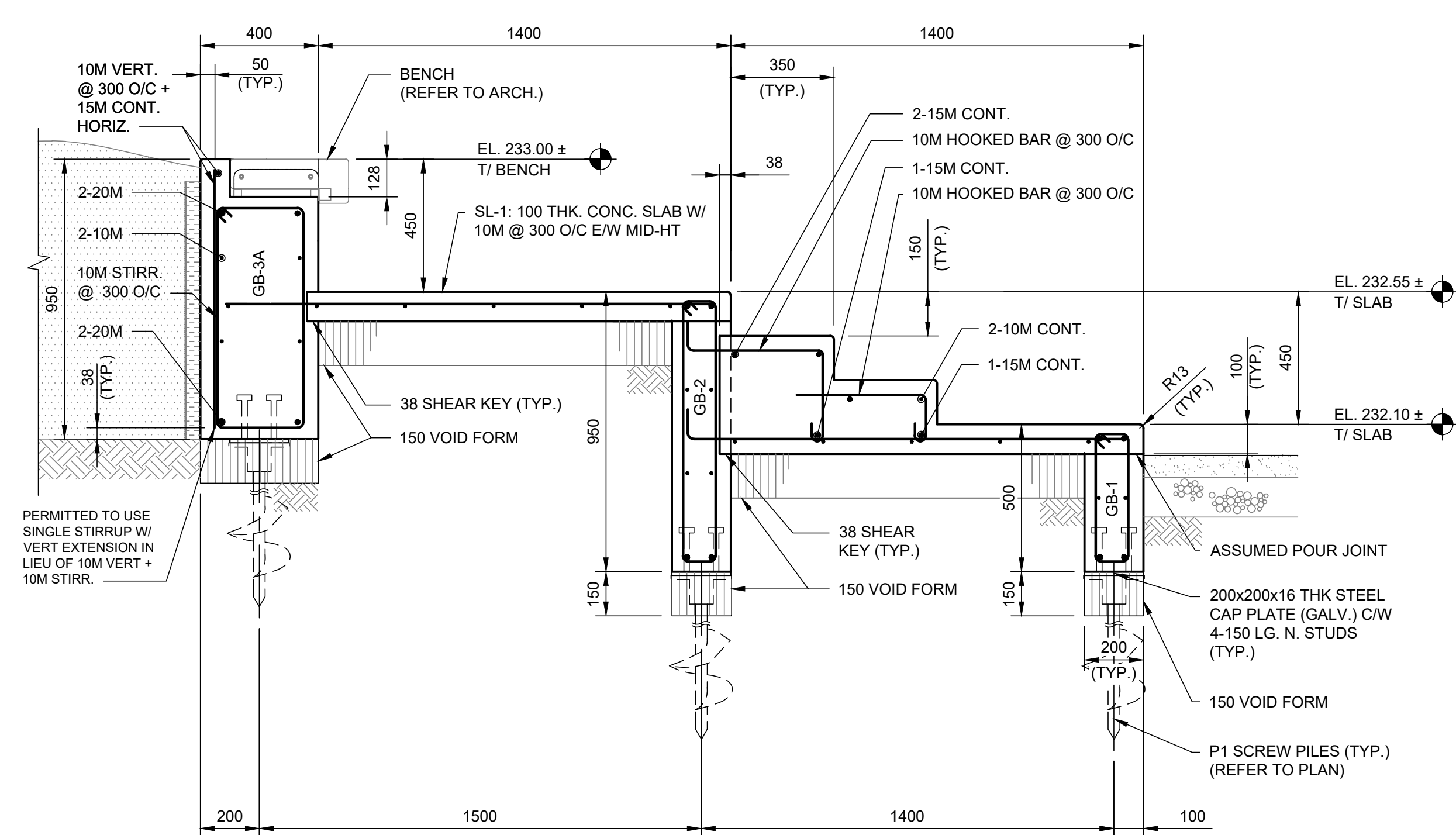
**1 SECTION**  
S1.0 SCALE: 1:15



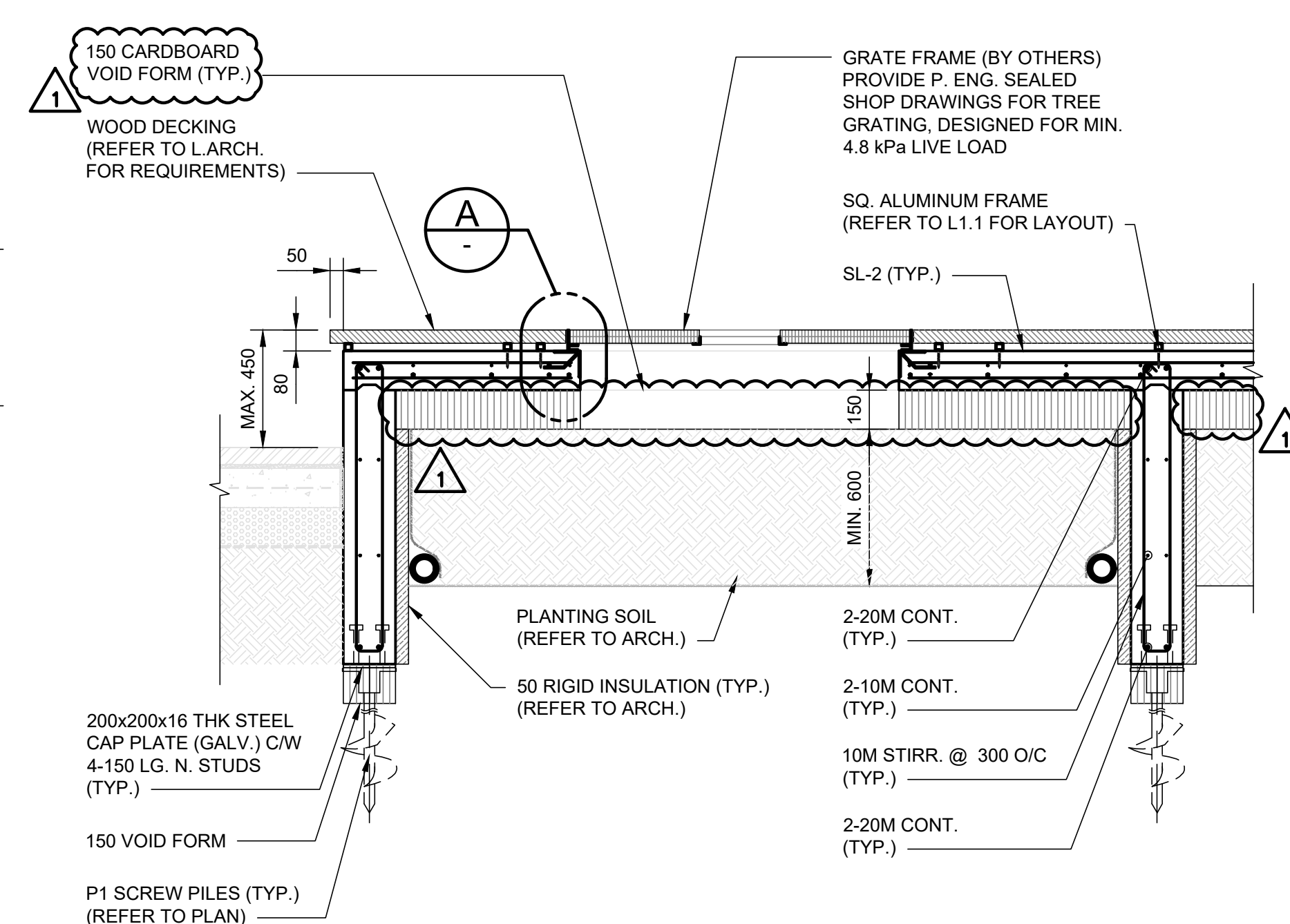
**2 SECTION**  
S1.0 SCALE: 1:15



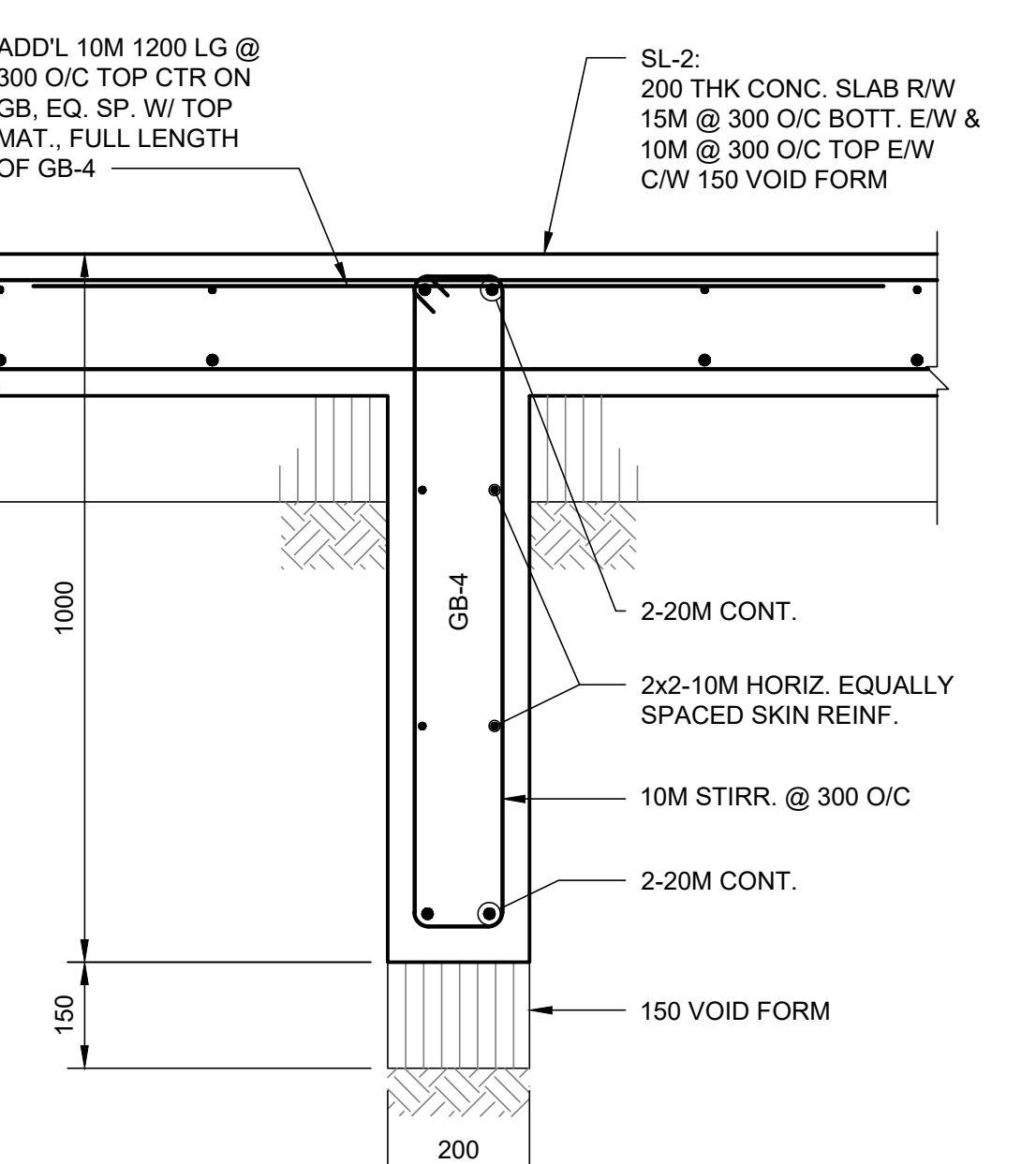
**SECTION D-D**  
- TRANSVERSE CONC. BEAM  
SCALE: 1:10



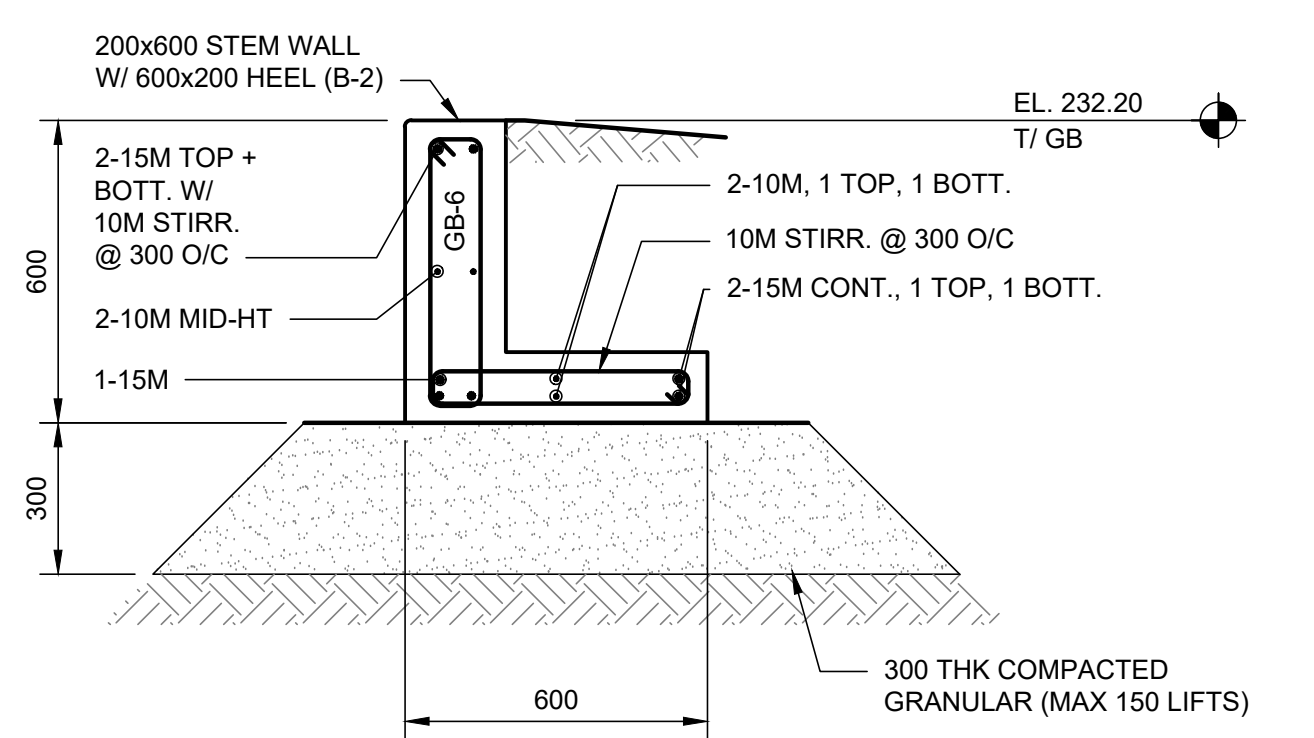
**3 SECTION**  
S1.0 SCALE: 1:15



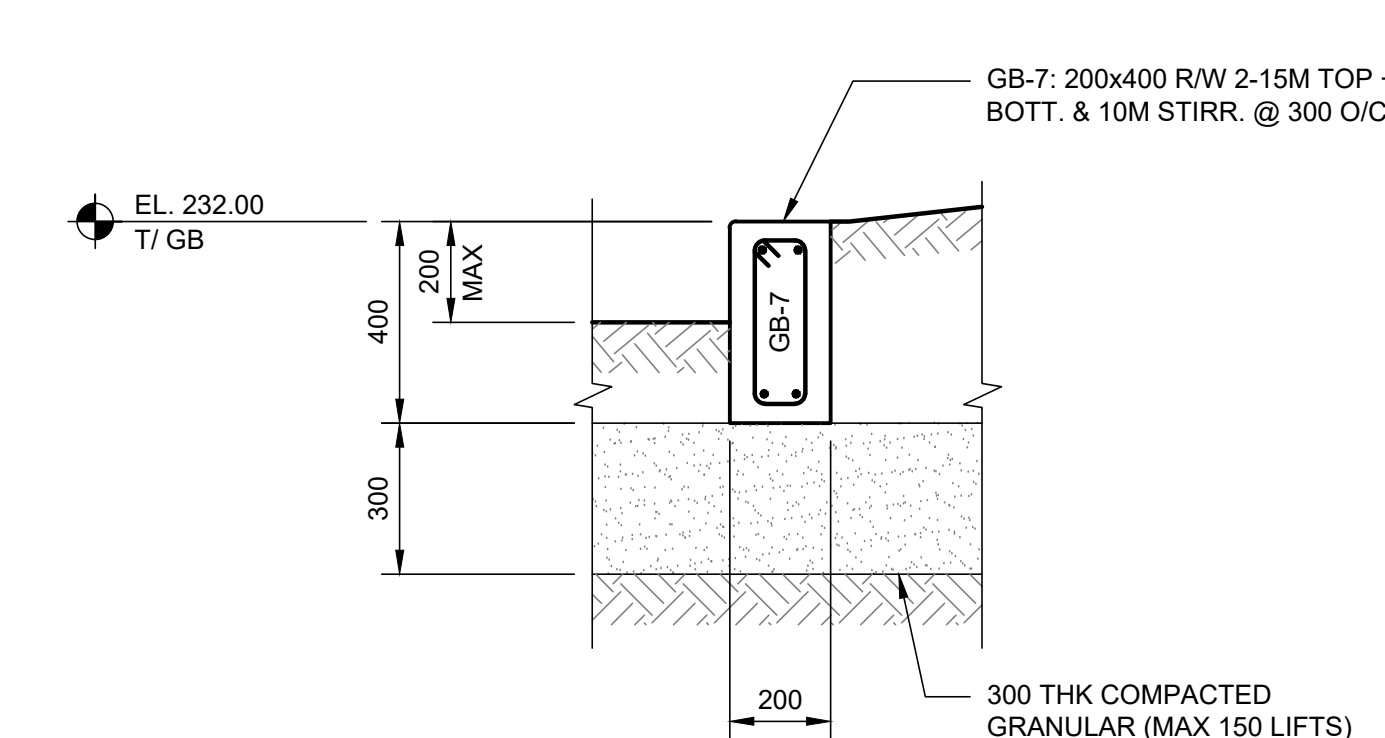
**4 SECTION**  
S1.0 SCALE: 1:20



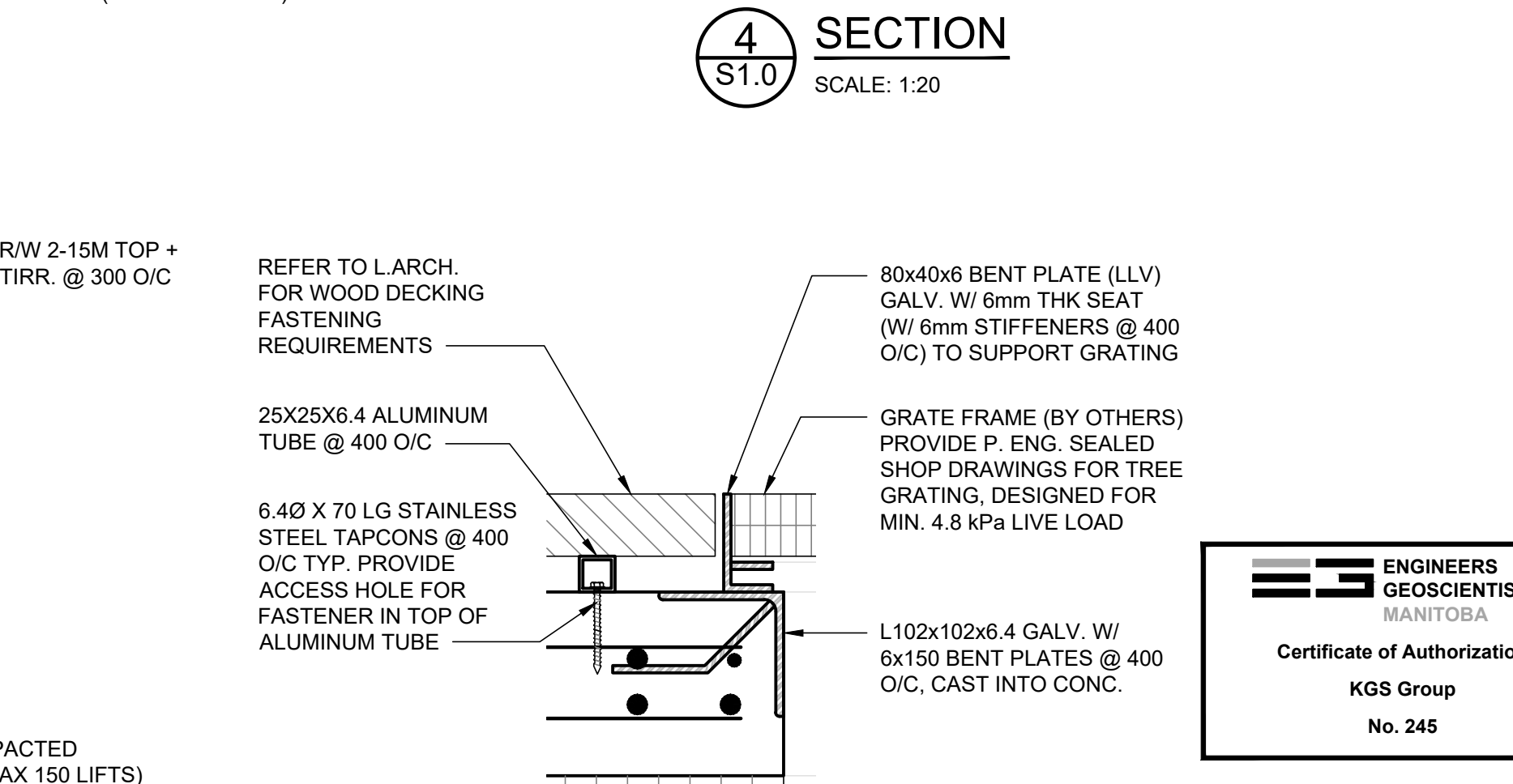
**5 SECTION**  
S1.0 SCALE: 1:10



**6 SECTION**  
S1.0 SCALE: 1:15



**7 SECTION**  
S1.0 SCALE: 1:15



**A DETAIL**  
SCALE: 1:5

**NOTES:**  
**PILE SCHEDULE:**  
P-1: 89 Ø (MIN.) GALVANIZED HELICAL PILE (MIN. 4267 LENGTH); W/ 200x200x16 THK STEEL CAP PLATE (GALV.) C/W 4-150 LG. N. STUDS  
PILE DESIGN LOADS:  
AXIAL: 200 kN (DOWN FACT.), 145 kN (DOWN UNFACT.)  
100 kN (UPLIFT, SEE NOTE)  
LATERAL: 3 kN (FACT.), 2 kN (UNFACT.)  
P-2: 168 Ø (MIN.) GALVANIZED HELICAL PILE (MIN. 4267 LENGTH); W/ 300x300x16 THK STEEL CAP PLATE (GALV.) C/W (4) 19 Ø A325 BOLTS (GALV.) AT LIGHT POLE BASES CAP PLATE TO BE 450x450x16 C/W (4) 32Ø GALV. BOLTS (COORD. W/ ELECT. POLE DRAWINGS)  
PILE DESIGN LOADS:  
AXIAL: 20 kN (DOWN FACT.), 15 kN (DOWN UNFACT.)  
185 kN (UPLIFT, SEE NOTE)  
LATERAL: 11 kN (FACT.), 2 kN (UNFACT.)  
MOMENT: 40 kN-m (FACT.)  
P-3: CONCRETE PILE (REFER TO DETAIL)  
P-4: 89 Ø (MIN.) GALVANIZED HELICAL PILE (MIN. 4267 LENGTH); W/ 200x200x16 THK STEEL CAP PLATE (GALV.) C/W 4-150 LG. N. STUDS  
PILE DESIGN LOADS:  
AXIAL: 75 kN (DOWN FACT.), 50 kN (DOWN UNFACT.)  
100 kN (UPLIFT, SEE NOTE)  
LATERAL: 3 kN (FACT.), 2 kN (UNFACT.)  
**NOTE:** SLEEVE TOP 2440 OF PILE OR PROVIDE MEANS TO ELIMINATE FROST ADHESION FORCES. IF THIS IS DONE REDUCE UPLIFT TO 4 kN (FACT.) TYP.

**GRADE BEAM SCHEDULE:**  
GB-1: 200x500 R/W 2-20M TOP + BOT. & 2-10M MIDHEIGHT; 10M STIRR. @ 300 O/C  
GB-2: 200x950 R/W 2-20M TOP + BOT. & 2-10M MIDHEIGHT; 10M STIRR. @ 300 O/C  
GB-2A: 400x822 R/W 2-20M TOP + BOT. & 2X2-10M EQUALLY SPACED + 10M STIRR. @ 300 O/C, EXTEND SKIN REINF. + TOP BARS 600 INTO GB-2 TYP.  
GB-3: 400x950 R/W 2-20M TOP + BOT. & 2X2-10M EQUALLY SPACED + 10M STIRR. @ 300 O/C  
GB-3A: 400x822 R/W 2-20M TOP + BOT. & 2X2-10M EQUALLY SPACED + 10M STIRR. @ 300 O/C + 100x128 CURB R/W 10M VERT + 15M CONT. HORIZ. EXTEND SKIN REINF. + TOP BARS 600 INTO GB-3 TYP.  
GB-4: 200x1000 R/W 2-20M TOP + BOT. & 2X2-10M HORIZ. EQUALLY SPACED SKIN REINF.; 10M STIRR. @ 300 O/C  
GB-5: 200x400 R/W 2-20M TOP + BOT. & 10M STIRR. @ 300 O/C. HOOK BARS INTO PERP. GRADE BEAMS  
GB-6: L SHAPED GRADE BEAM, REFER TO SECTION FOR REINFORCING  
GB-7: 200x400 R/W 2-20M TOP + BOT. & 10M STIRR. @ 300 O/C  
**NOTE:** ALL GRADE BEAMS EXCEPT GB-6 AND GB-7 ARE ON 150 VOID FORM TYP.

**SLAB SCHEDULE:**  
SL-1: 100 THK R/W 10M @ 300 O/C E/W CENTERED C/W 150 VOID FORM  
SL-2: 200 THK R/W 15M @ 300 O/C BOT. E/W & 10M @ 300 O/C TOP E/W C/W 150 VOID FORM

REV	YY / MM / DD	DESCRIPTION	BY
1	24 / 03 / 20	RE-ISSUED FOR TENDER	
0	24 / 02 / 09	ISSUED FOR TENDER	ML

A. SECTION LETTER OR DETAIL NUMBER.  
B. DRAWING WHERE SECTION OR DETAIL IS DRAWN.  
OR  
DRAWING WHERE SECTION OR DETAIL IS INDICATED  
--- SECTION OR DETAIL SHOWN ON SAME DRAWING.

**SCATLIFF + MILLER + MURRAY**  
visionary urban design + landscapes

CONSULTANT FILE NAME: AIR CANADA PARK REDEVELOPMENT  
CLIENT: CITY OF WINNIPEG  
PLANNING, PROPERTY & DEVELOPMENT  
Winnipeg  
AIR CANADA WINDOW PARK REDEVELOPMENT  
CITY DRAWING NUMBER: SHEET OF 1 1  
STRUCTURAL SECTIONS AND DETAILS  
DESIGN: MEL DRAWN: MRB DATE: 23/08/31 SCALE: AS NOTED  
CHECKED: APPROVED: PROJECT No. 23-0109-004 DRAWING No. S2.0

**FOR TENDER ONLY**  
NOT TO BE USED FOR CONSTRUCTION

BID OPPORTUNITY No. 78-2024