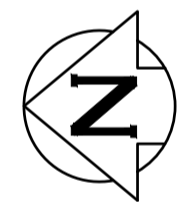
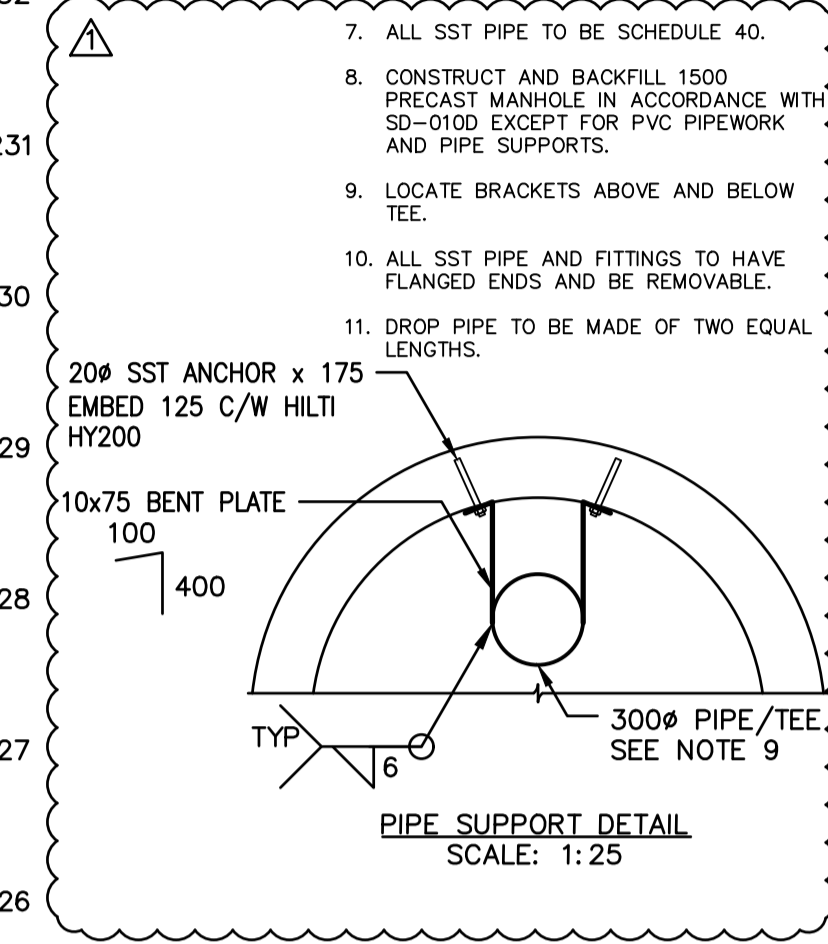


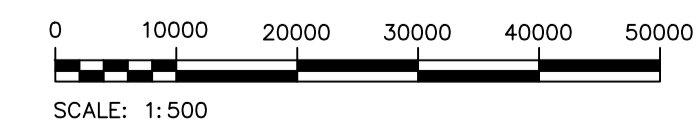
- NOTES:**
- FOR INFORMATION REGARDING GENERAL NOTES, UTILITIES, SYMBOLS, AND ABBREVIATIONS, REFER TO THE LEGEND AND ABBREVIATIONS DRAWING.
 - CONFIRM LOCATIONS, SIZE, TYPE, AND ELEVATIONS OF EXISTING UTILITY TIE-INS, CROSSINGS, AND PROXIMITY PRIOR TO CONSTRUCTION.
 - SEWER CONNECTION AS PER CITY OF WINNIPEG STANDARD DETAIL SD-009.
 - MANHOLE INSTALLED AS PER CITY OF WINNIPEG STANDARD CW2130.
 - RESTORE PARKS SERVICES COMPOUND TO PRE-CONSTRUCTION CONDITIONS.
 - CONTRACTOR TO CONFIRM MANHOLE RIM ELEVATION.
 - ALL SST PIPE TO BE SCHEDULE 40.
 - CONSTRUCT AND BACKFILL 1500 PRECAST MANHOLE IN ACCORDANCE WITH SD-0100 EXCEPT FOR PVC PIPEWORK AND PIPE SUPPORTS.
 - LOCATE BRACKETS ABOVE AND BELOW TEE.
 - ALL SST PIPE AND FITTINGS TO HAVE FLANGED ENDS AND BE REMOVABLE.
 - DROP PIPE TO BE MADE OF TWO EQUAL LENGTHS.



ADDITIONAL UTILITY LINES SHOWN

THE INFORMATION CONTAINED IN THESE DRAWINGS SHALL BE ORIENTED IN THE SAME DATUM AS THE GIS, NAD 1983 JUNE 1990.

10		
9		
8		
7		
6		
5		
4		
3		
2		
1		
NO.	DRAWING NUMBER	REFERENCE DRAWING TITLE
REFERENCE DRAWINGS		



METRIC
WHOLE NUMBERS INDICATE MILLIMETRES
DECIMALIZED NUMBERS INDICATE METRES
UNLESS OTHERWISE NOTED



B.M.	ELEV.			
NO.	REVISIONS	DATE	BY	
1	ISSUED FOR ADDENDUM 03	2024.04.04		
0	ISSUED FOR CONSTRUCTION	2024.03.18		

MPE
a division of Englobe

DESIGNED BY: M. BAKER	CHECKED BY: B. BAKER
DRAWN BY: D. MCMILLAN	APPROVED BY: M. BAKER
SCALE: HORIZONTAL VERTICAL	RELEASED FOR CONSTRUCTION
DATE: 2024-04-03	DATE:

PLOT DATE: 2024 04 04

PROVINCE OF MANITOBA
M.J. BAKER
Member
43540
REGISTERED PROFESSIONAL ENGINEER

APRIL 4, 2024
CONSULTANT DRAWING NUMBER

Winnipeg
THE CITY OF WINNIPEG
WATER AND WASTE DEPARTMENT
ENGINEERING DIVISION

RENFREW OUTFALL GATE CHAMBER UPGRADES
2024 UPGRADES
FORCEMAIN PLAN PROFILE
STATION 0+000 TO 0+320

CITY DRAWING NUMBER: 1-0240G-C0001-001-R1 SHEET 3 OF 41

FILE PATH: M:\N-Data\84\00 City of Winnipeg\006 - Renfrew Outfall Gate Chamber Upgrades\AutoDesk\ACAD\
FILE NAME: C1.1 SITE PLAN.dwg