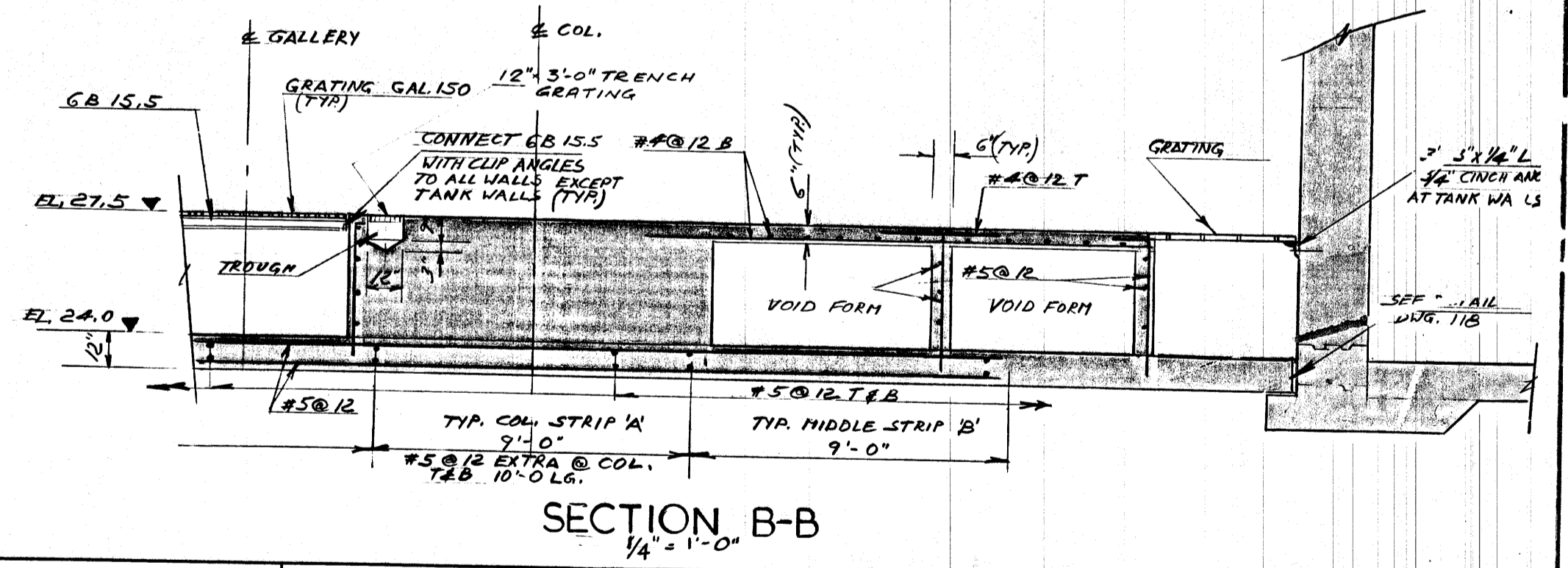
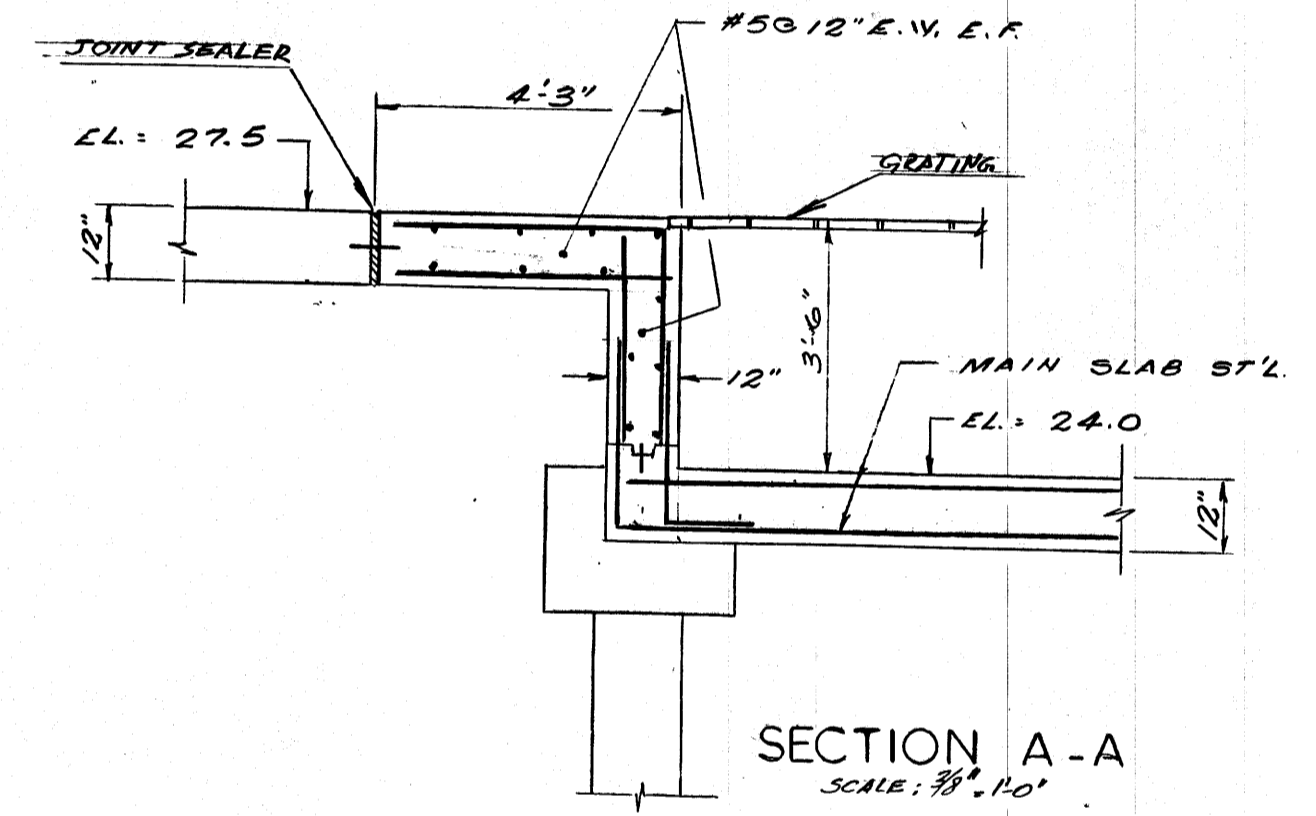


FOUNDATION SLAB REINF.

PANEL MARK	REINF.	EXTRA REINF. AT COLUMN.
"A" - COL. STRIP	#5 @ 12" T.I.B.	#5 @ 12" T.I.B. x 10'-0" LONG.
"B" - MIDDLE STRIP	#5 @ 12" T.I.B.	
"C" - COL. STRIP	#6 @ 12" T.I.B.	#5 @ 12" T.I.B. x 10'-0" LONG.
"D" - MIDDLE STRIP	#5 @ 12" T.I.B.	

PLACE 7-#6 @ 6" O.C. x 6'-0" LONG BARS E.W. BOT AT LOCATION OF PUMP BASES. FOR SIZES OF PUMP BASES SEE DWG. No. 133



THIS DRAWING IS VOID SEE DETAIL DWG. No. 19

REVISIONS

No.	DATE	DETAIL



THE METROPOLITAN CORPORATION OF GREATER WINNIPEG
WATERWORKS AND WASTE DISPOSAL DIVISION

NORTH END SEWAGE TREATMENT PLANT

CONTRACT A - DIGESTION AREA

STRUCTURAL - GALLERY No. 5

FOUNDATION PLAN EL. - 24.0 & 27.5

APPROVED
 J. W. MacLaren
 ENGINEER OF DESIGN

APPROVED
 D. R. Grimes
 ENGINEER OF WASTE DISPOSAL

W. L. WARDROP ASSOCIATES (MANAGEMENT) LIMITED
 ENGINEERING CONSULTANTS WINNIPEG

DATE: MARCH 11, 1963
 SCALE: AS SHOWN
 DWG. No. 113 OF 217
 NEP-113

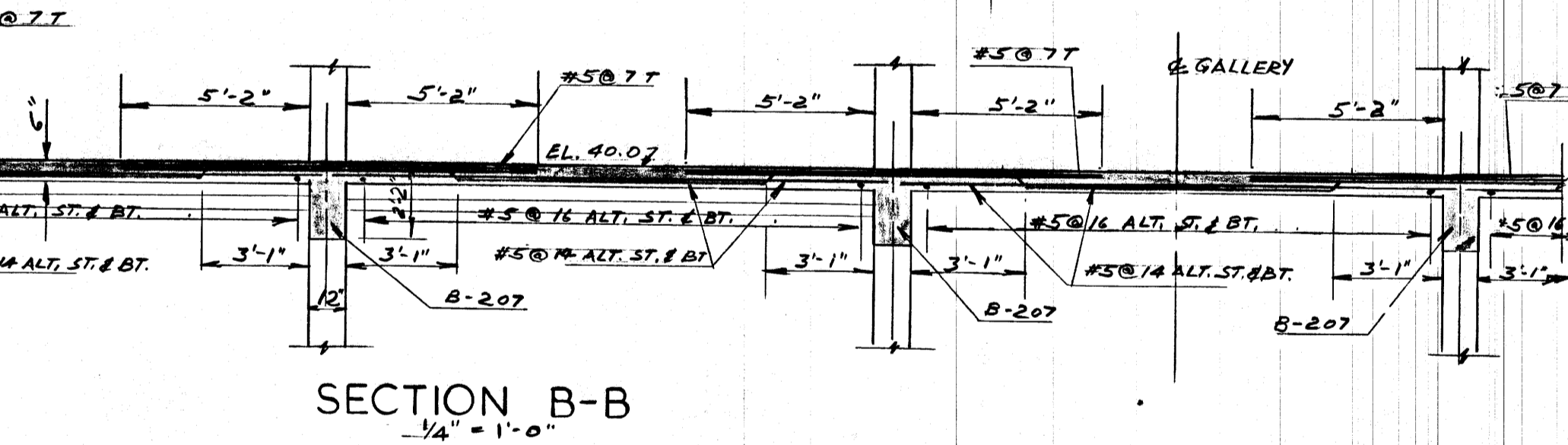
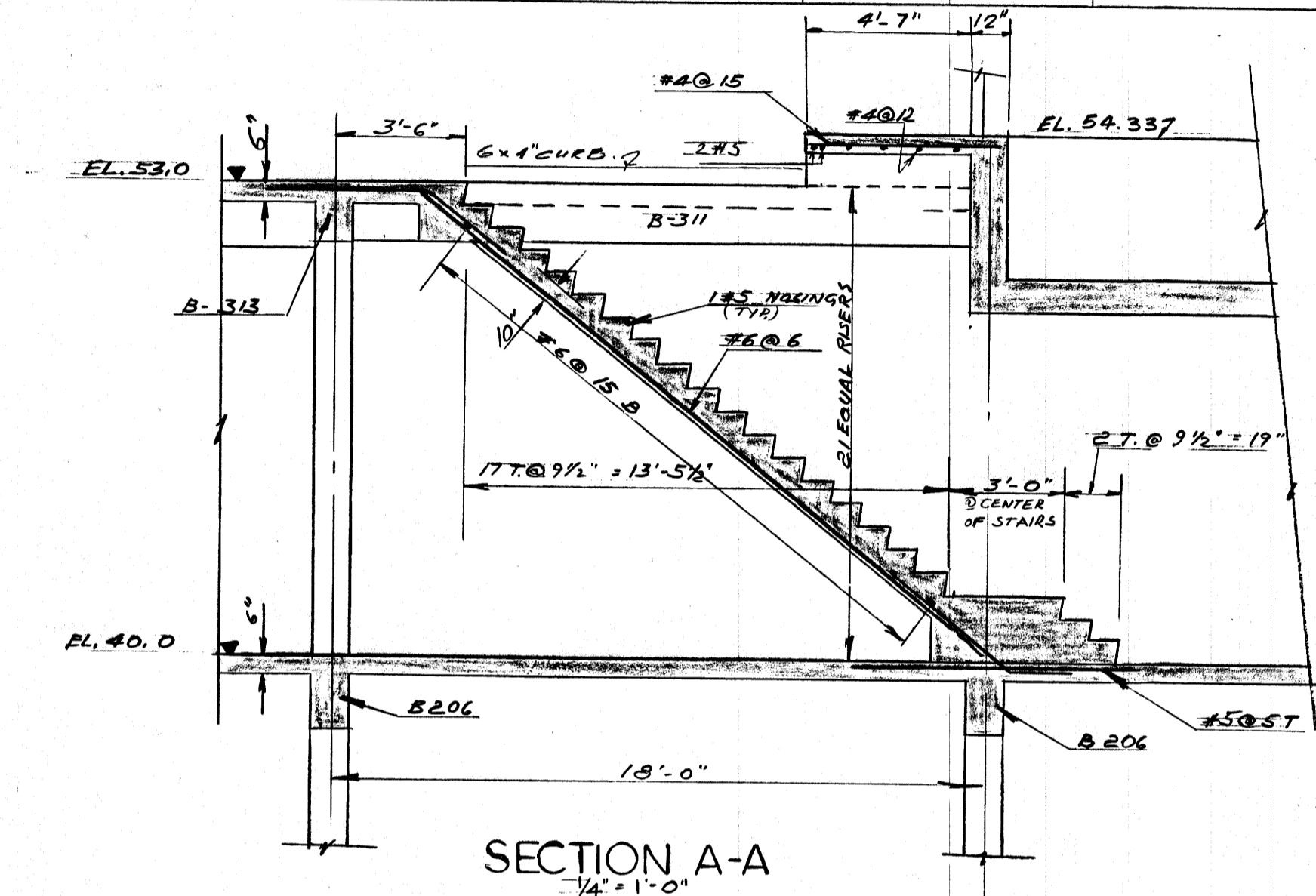
AUG. 1966

AS BUILT

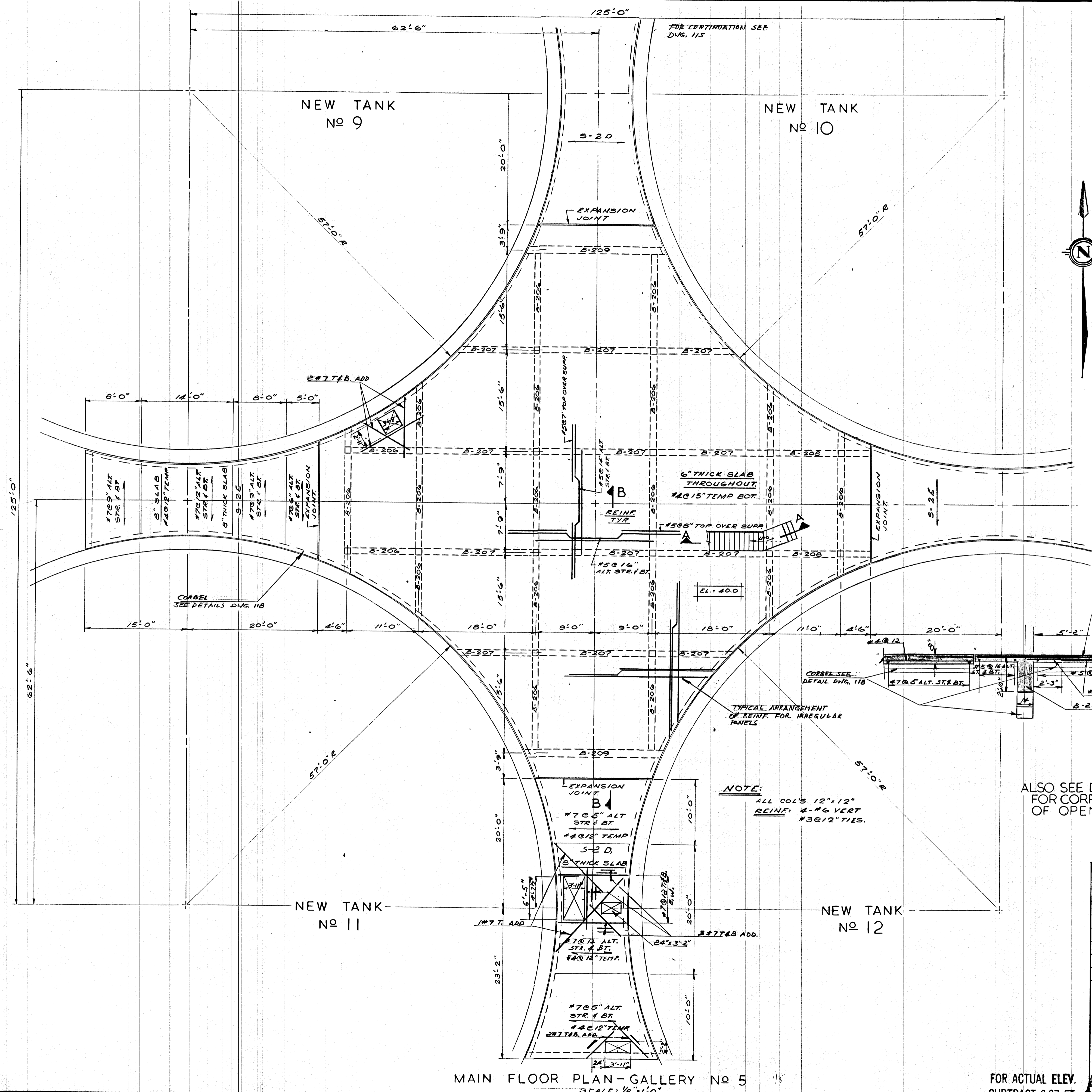
FILE # NR 10319

MAIN FLOOR BEAM SCHEDULE

MARK	SIZE	REINFORCING		STIRRUPS
		BOTTOM	TOP	
B-206	12" x 24"	1-#7 2-#6	2-#6	#4-485" @ 20" O.C. E.E. REM. @ 12"
B-207	12" x 26"	1-#6 2-#8	2-#8	#4-405", 406", 208" 10" E.E. REM. @ 12"
B-208	12" x 26"	2-#6	2-#6	#3 @ 12"
B-209	14" x 34"	3-#8 2-#8	2-#6	#4-604", 606" E.E. REM. @ 12"

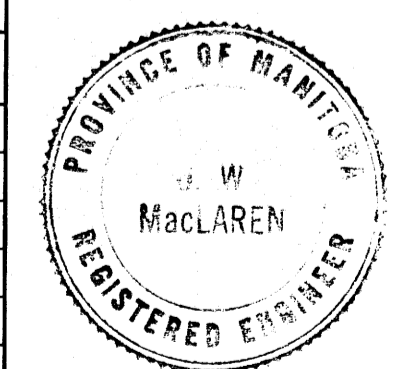


ALSO SEE DETAIL DWG. No 26 FOR CORRECT LOCATIONS OF OPENINGS



NOTE:
ALL COL'S 12" x 12"
REINF: 4-#6 VERT
#3@12" TIES.

REVISIONS		
NO.	DATE	DETAIL



THE METROPOLITAN CORPORATION OF GREATER WINNIPEG
WATERWORKS AND WASTE DISPOSAL DIVISION

NORTH END SEWAGE TREATMENT PLANT

CONTRACT A - DIGESTION AREA
STRUCTURAL - GALLERY No. 5
MAIN FLOOR PLAN ELEV. 40.0

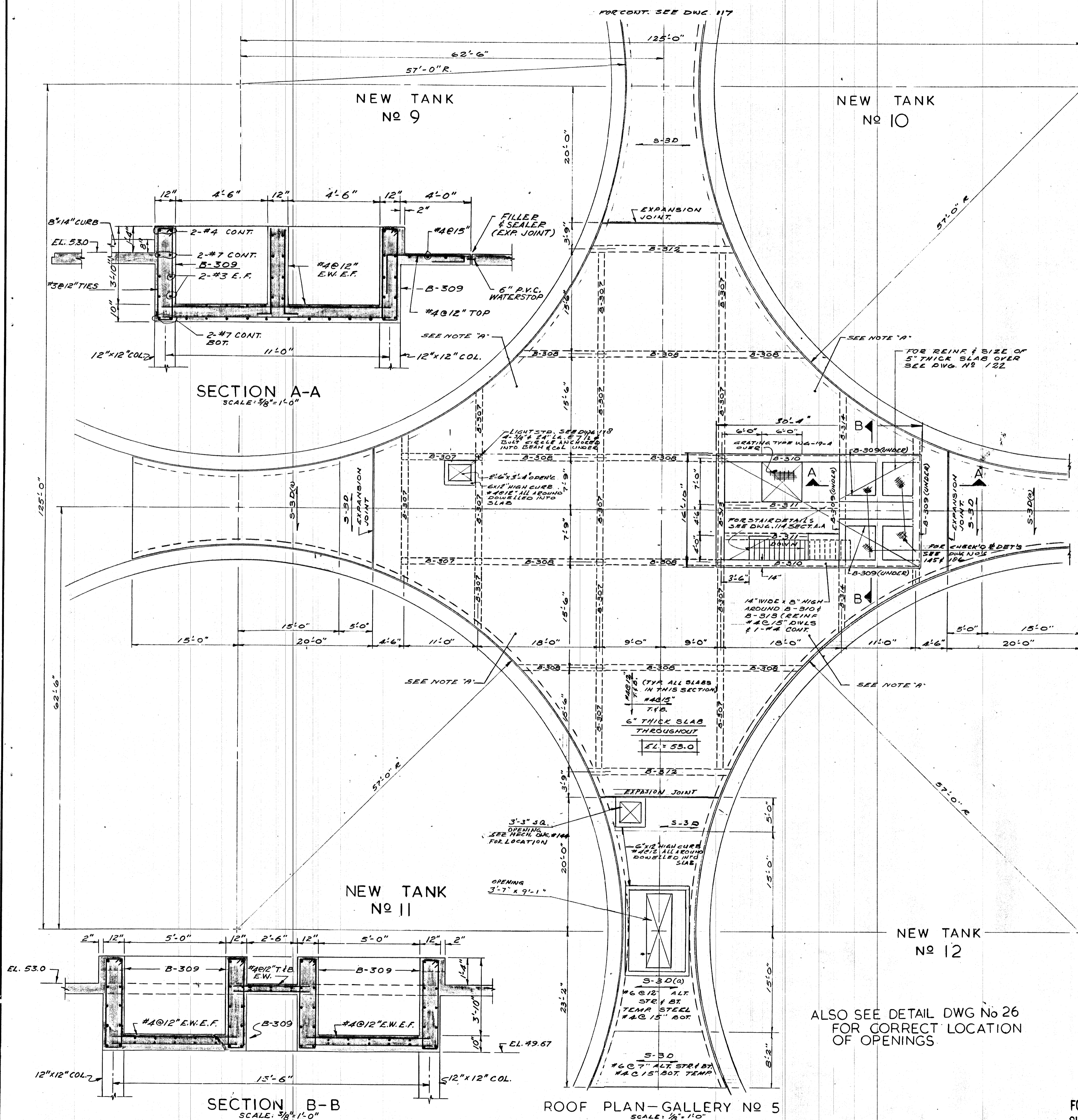
APPROVED: *J. W. MacLaren*
JAMES F. MACLAREN LIMITED
ENGINEERS
TORONTO

APPROVED: *A. J. Parman*
W.L. WARDROP ASSOCIATES
(MANAGEMENT) LIMITED
ENGINEERING CONSULTANTS WINNIPEG

DATE: MARCH 11, 1963
SCALE: AS SHOWN
DWG. No. 114 OF 217
NEP-114

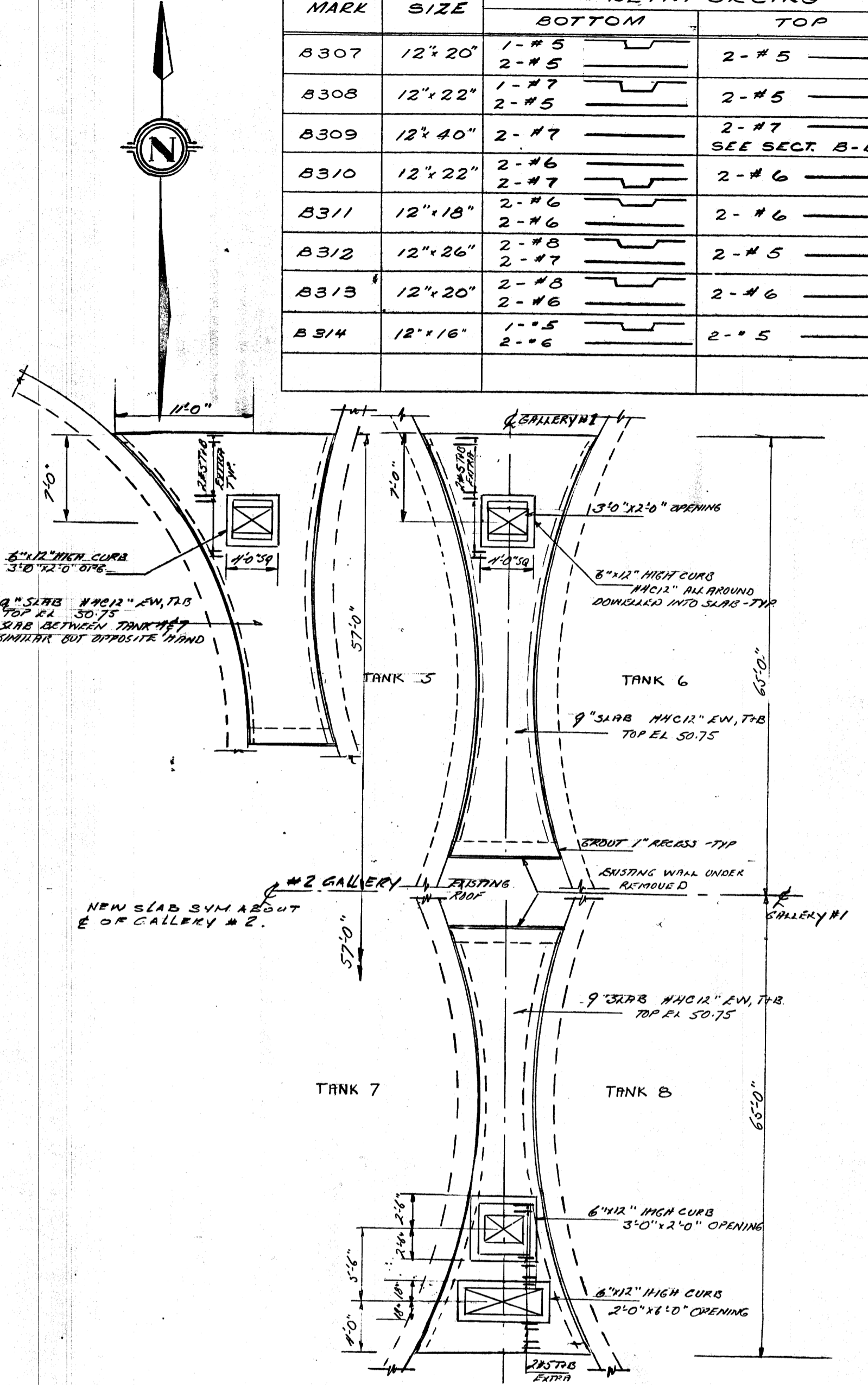
AUG. 1966
FOR ACTUAL ELEV. AS BUILT
SUBTRACT 0.37 FT.

FILE # NR 10320



ROOF BEAM SCHEDULE

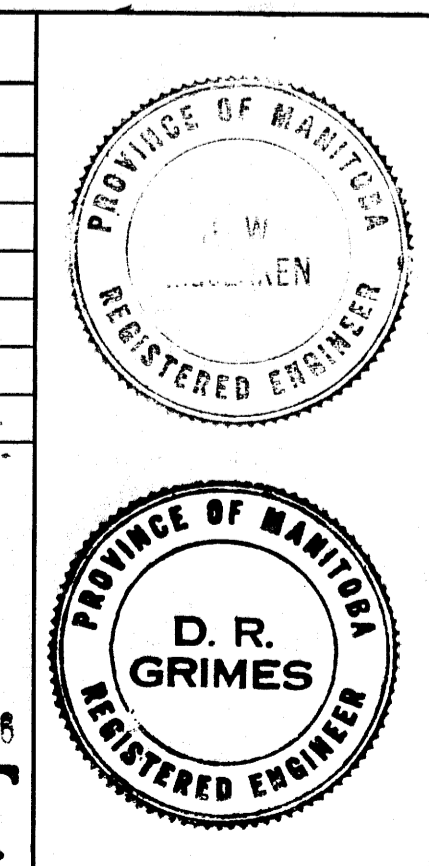
MARK	SIZE	REINFORCING		STIRRUPS
		BOTTOM	TOP	
B307	12" x 20"	1-#5 2-#5	2-#5	#3 @ 12"
B308	12" x 22"	1-#7 2-#5	2-#5	∅
B309	12" x 40"	2-#7	SEE SECT. B-B	∅
B310	12" x 22"	2-#6 2-#7	2-#6	#4-6@4", 2 @ 10" E.E. REM. @ 12"
B311	12" x 18"	2-#6 2-#6	2-#6	#3 @ 12"
B312	12" x 26"	2-#8 2-#7	2-#5	#4-5@4", 3 @ 8" E.E. REM. @ 12"
B313	12" x 20"	2-#8 2-#6	2-#6	#3 @ 12"
B314	12" x 16"	1-#5 2-#6	2-#5	#3 @ 12"



NOTE
SEE DWG. #137 FOR LOCATION AND SIZE OF OPENINGS FOR RECIRCULATION COMPRESSOR DISCHARGE LINES.

REVISIONS

No.	DATE	DETAIL



THE METROPOLITAN CORPORATION OF GREATER WINNIPEG
WATERWORKS AND WASTE DISPOSAL DIVISION

NORTH END SEWAGE TREATMENT PLANT

CONTRACT A - DIGESTION AREA

STRUCTURAL - GALLERY No. 5

ROOF PLAN ELEV. 53.0

APPROVED: *J. MacLaren*
JAMES F. MACLAREN LIMITED ENGINEERS TORONTO

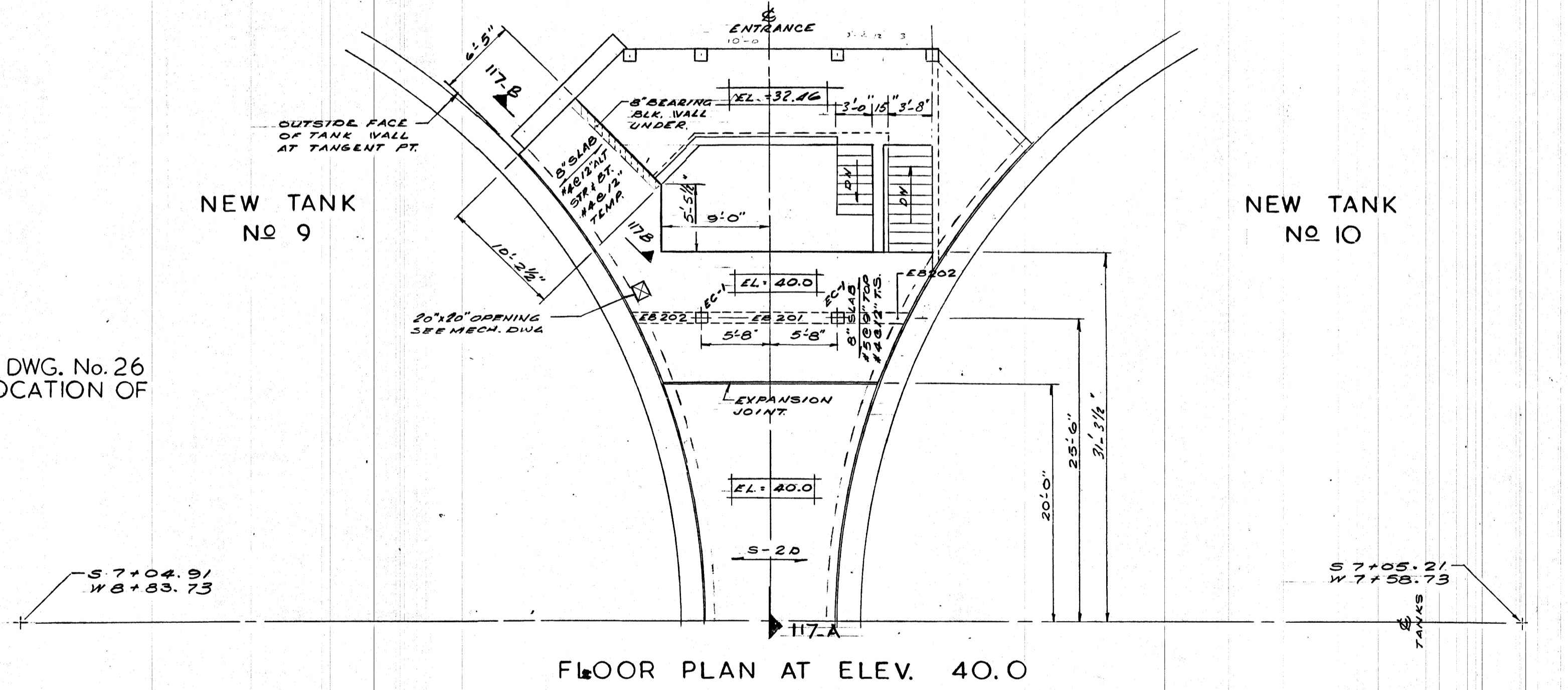
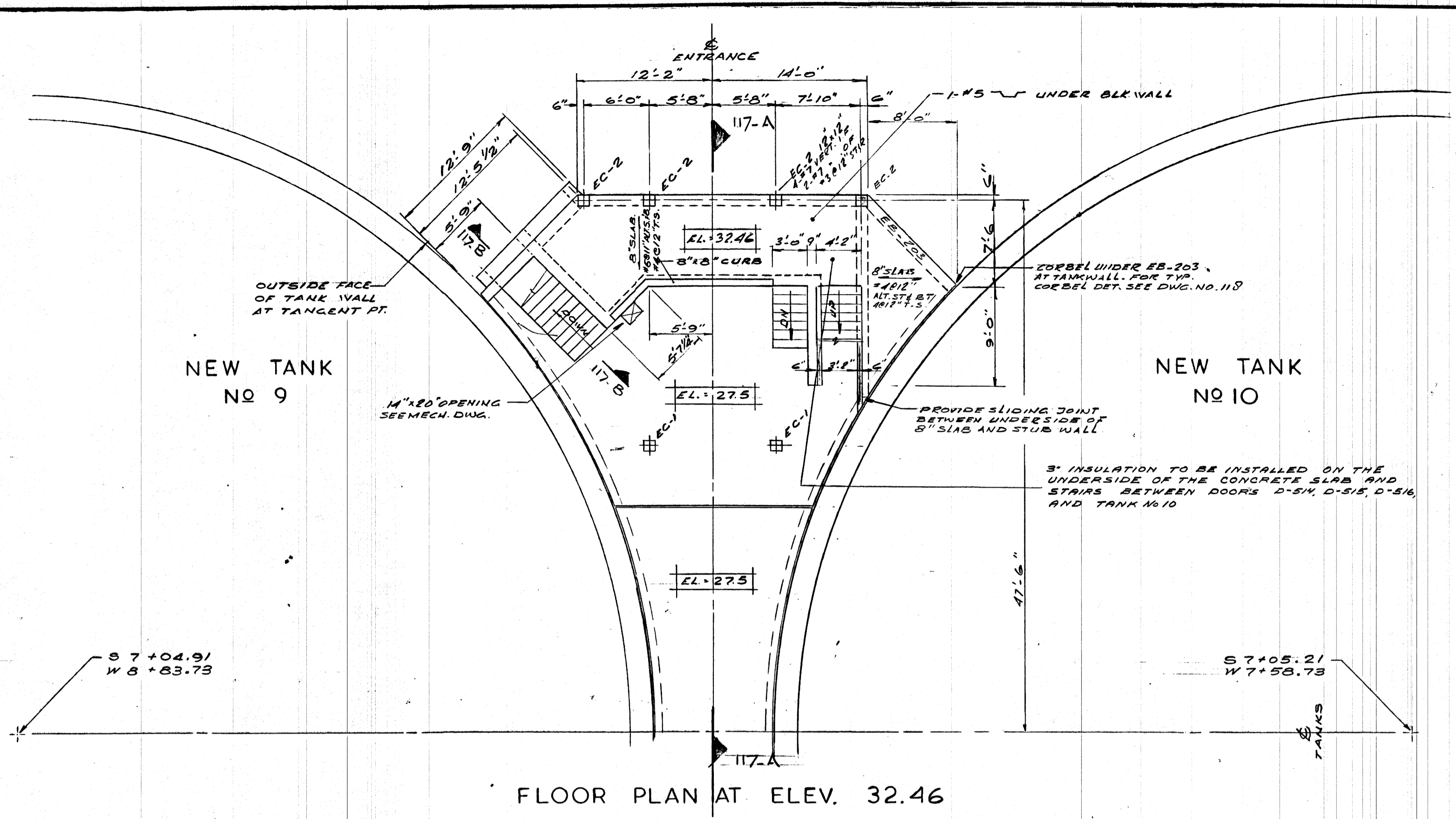
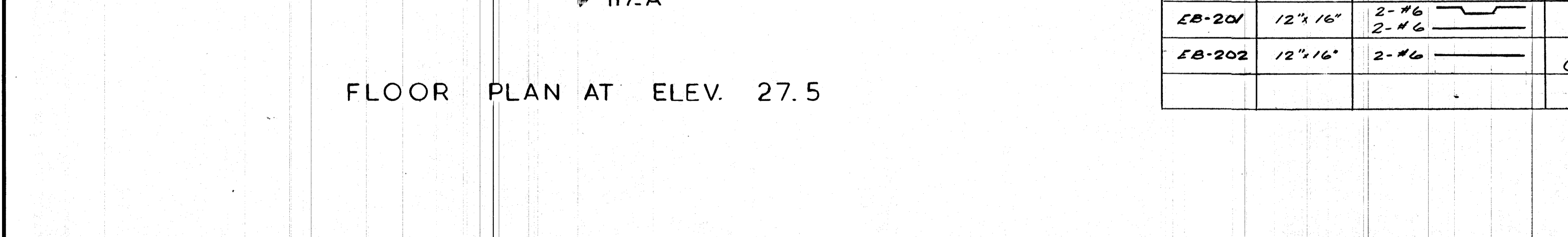
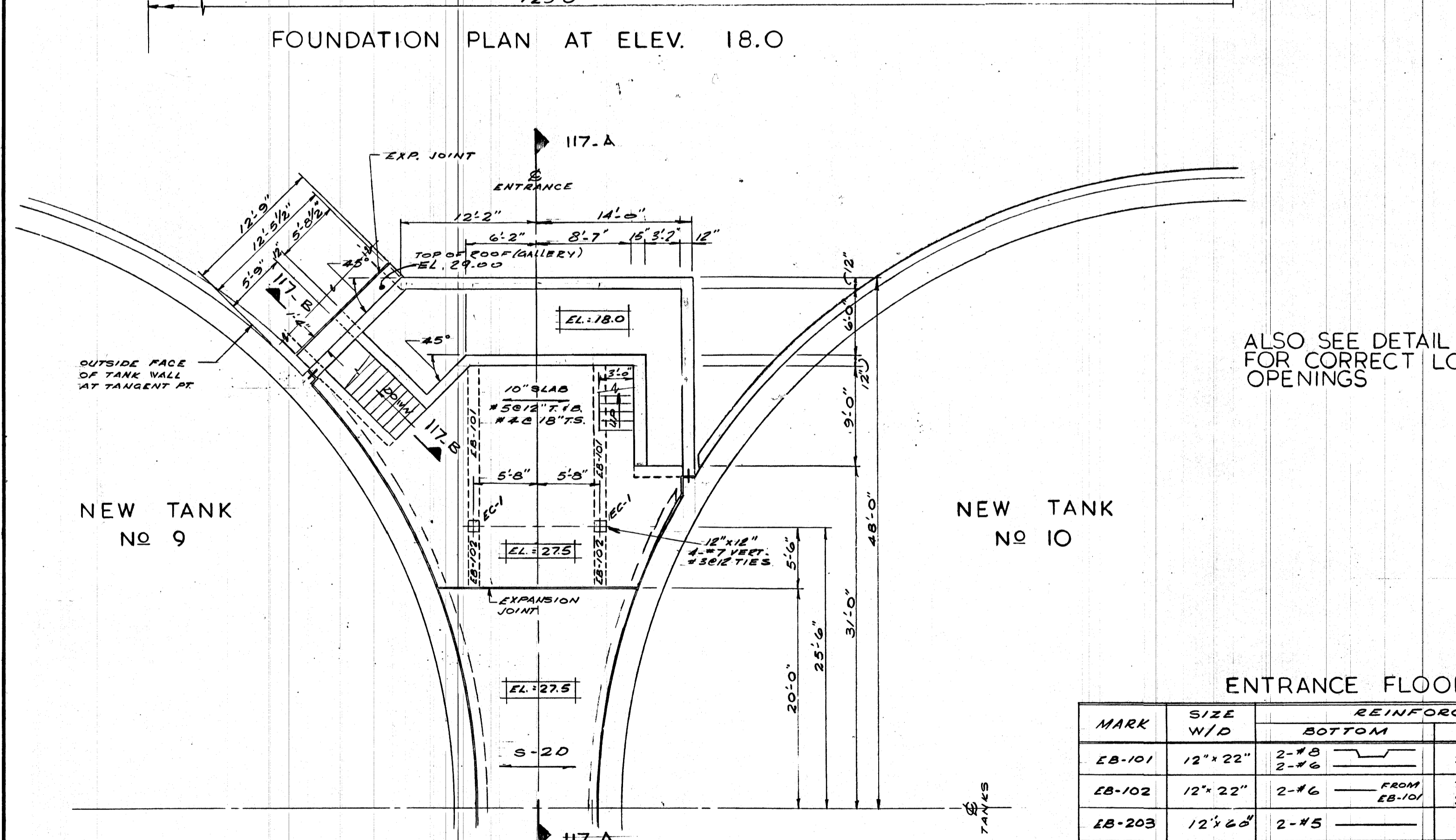
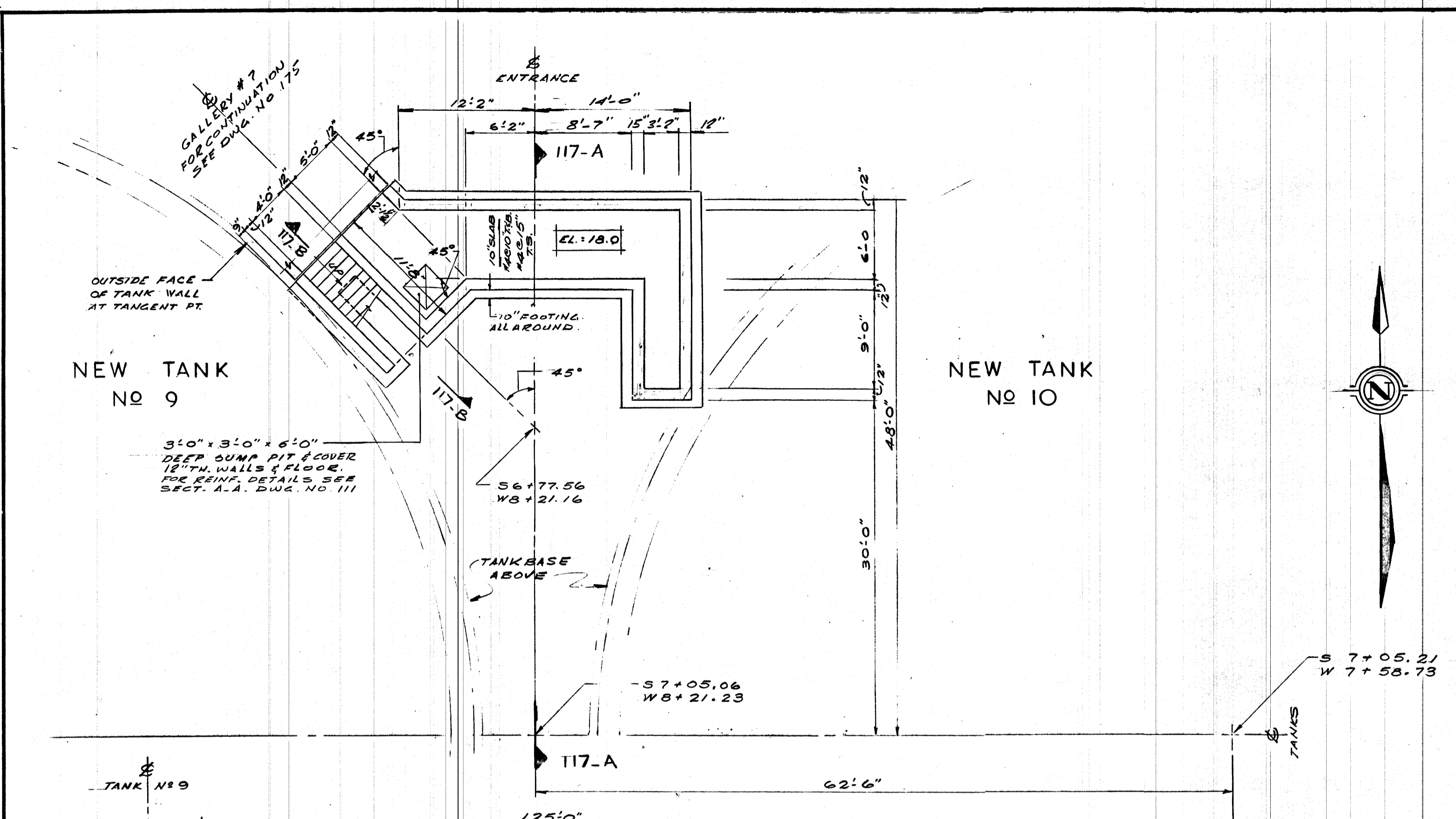
APPROVED: *D.R. Grimes*
D.R. GRIMES ENGINEER OF WASTE DISPOSAL

APPROVED: *W.L. Wardrop*
W.L. WARDROP ASSOCIATES (MANAGEMENT) LIMITED ENGINEERING CONSULTANTS WINNIPEG

DATE: MARCH 11, 1963
SCALE: AS SHOWN
DWG. No. 115 OF 217

ALSO SEE DETAIL DWG No 26 FOR CORRECT LOCATION OF OPENINGS

FOR ACTUAL ELEV. AS BUILT
SUBTRACT 0.37 FT.

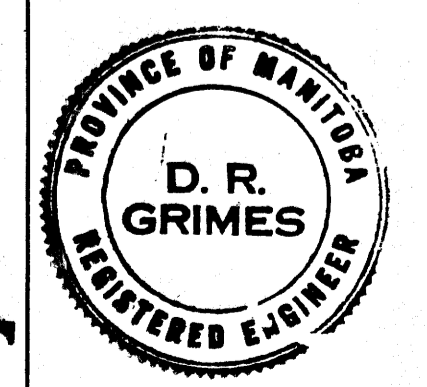
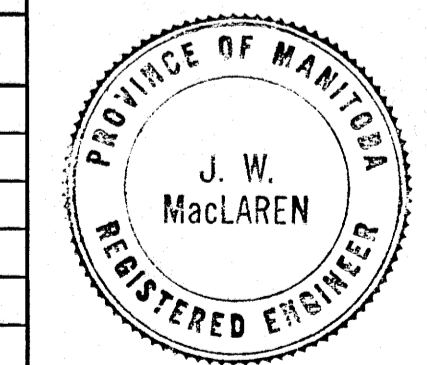


ALSO SEE DETAIL DWG. No. 26 FOR CORRECT LOCATION OF OPENINGS

ENTRANCE FLOOR BM. SCHEDULE

MARK	SIZE W/D	REINFORCING		STIRRUPS	TOP OF BM. ELEV.
		BOTTOM	TOP		
EB-101	12" x 22"	2-#8 2-#6	2-#6	#4-5@5", 3@8" E.E. REM. @ 12"	27.5
EB-102	12" x 22"	2-#6 FROM EB-101	2-#8 FROM EB-101	D.	27.5
EB-203	12" x 20"	2-#5	2-#5	#3 @ 12" O.C.	32.46
EB-201	12" x 16"	2-#6 2-#6	2-#6	#4-5@5", 2@8" E.E. REM. @ 12"	40.0
EB-202	12" x 16"	2-#6	2-#6 (2 FROM EB-201)	D.	40.0

REVISIONS		
No.	DATE	DETAIL



THE METROPOLITAN CORPORATION OF GREATER WINNIPEG
WATERWORKS AND WASTE DISPOSAL DIVISION

NORTH END SEWAGE TREATMENT PLANT
CONTRACT A - DIGESTION AREA
STRUCTURAL - GALLERY No. 5
ENTRANCE FLOOR PLANS

APPROVED
 J. W. MacLaren
 JAMES F. MACLAREN LIMITED
 ENGINEERS TORONTO
 D. R. Grimes
 W. I. WARDROP ASSOCIATES
 (MANAGEMENT) LIMITED
 ENGINEERING CONSULTANTS WINNIPEG
 DIRECTOR & CHIEF ENGINEER

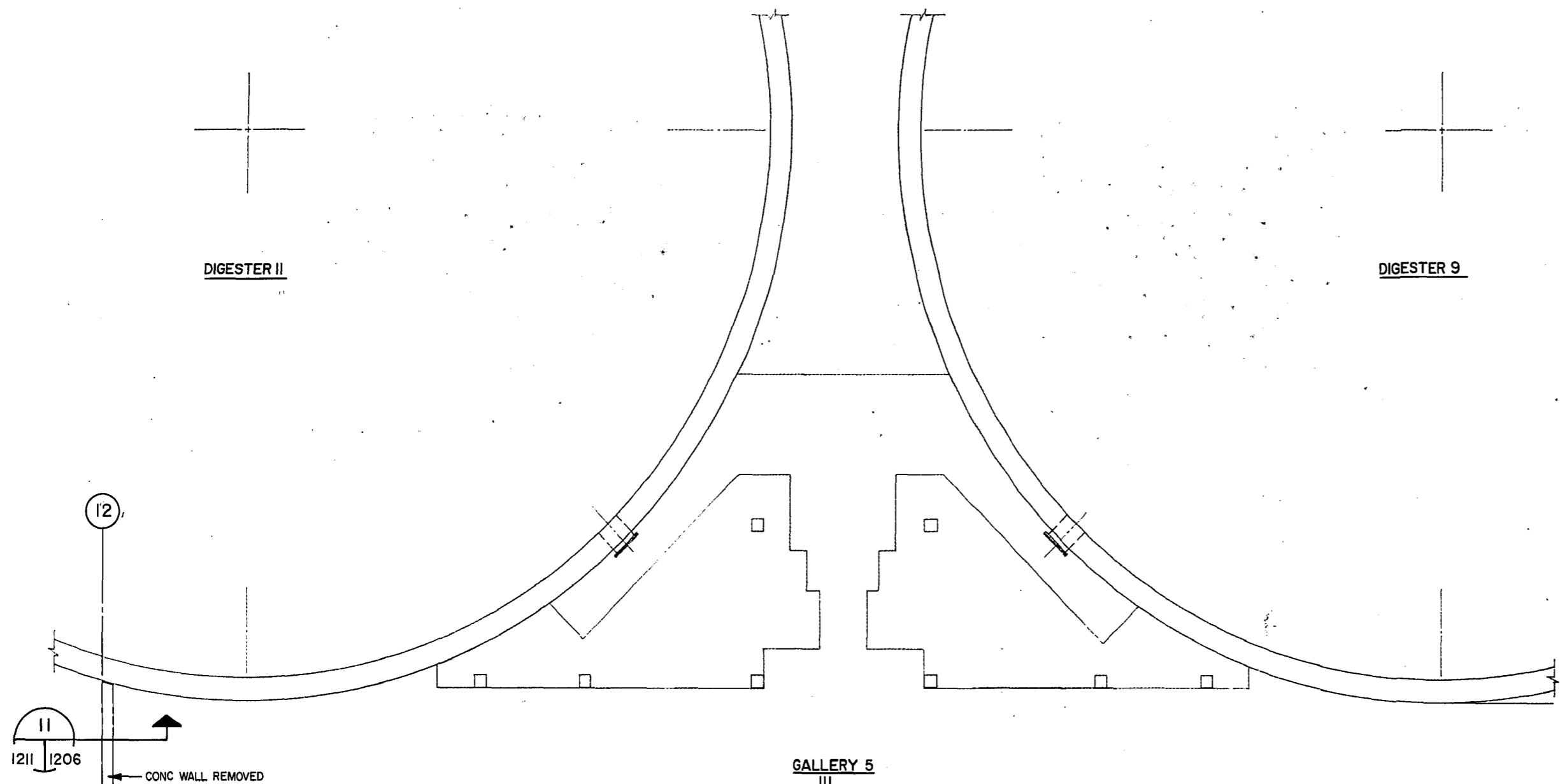
DATE: MARCH 11, 1963
 SCALE: 1/8" = 1'-0"
 DWG. No. 116 OF 217
NEP-116

FOR ACTUAL ELEV. CONTRACT 0.37 FT. **AS BUILT**

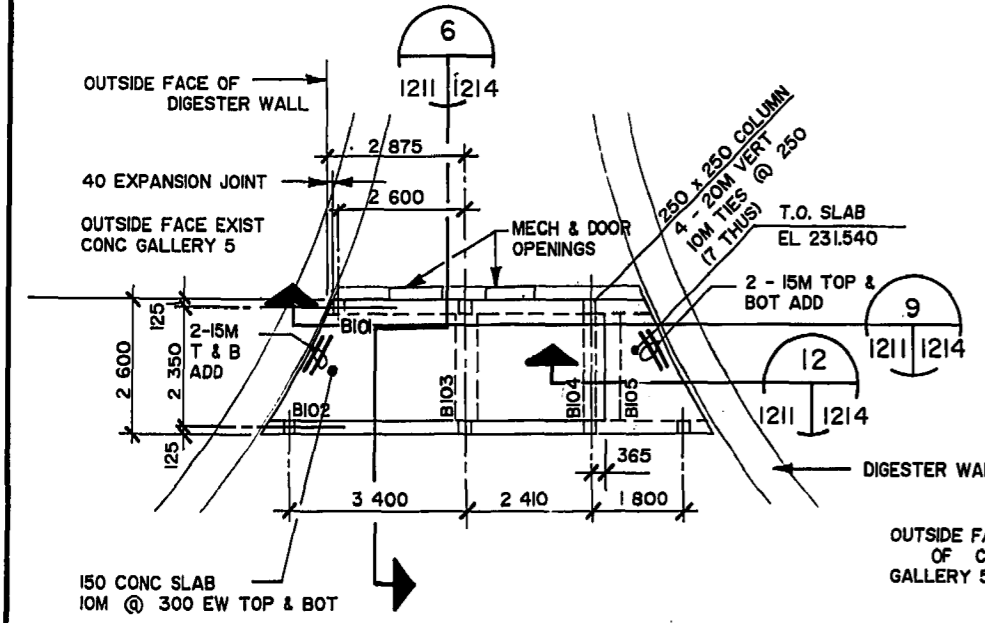
FILE # NR 10322

GENERAL NOTES:

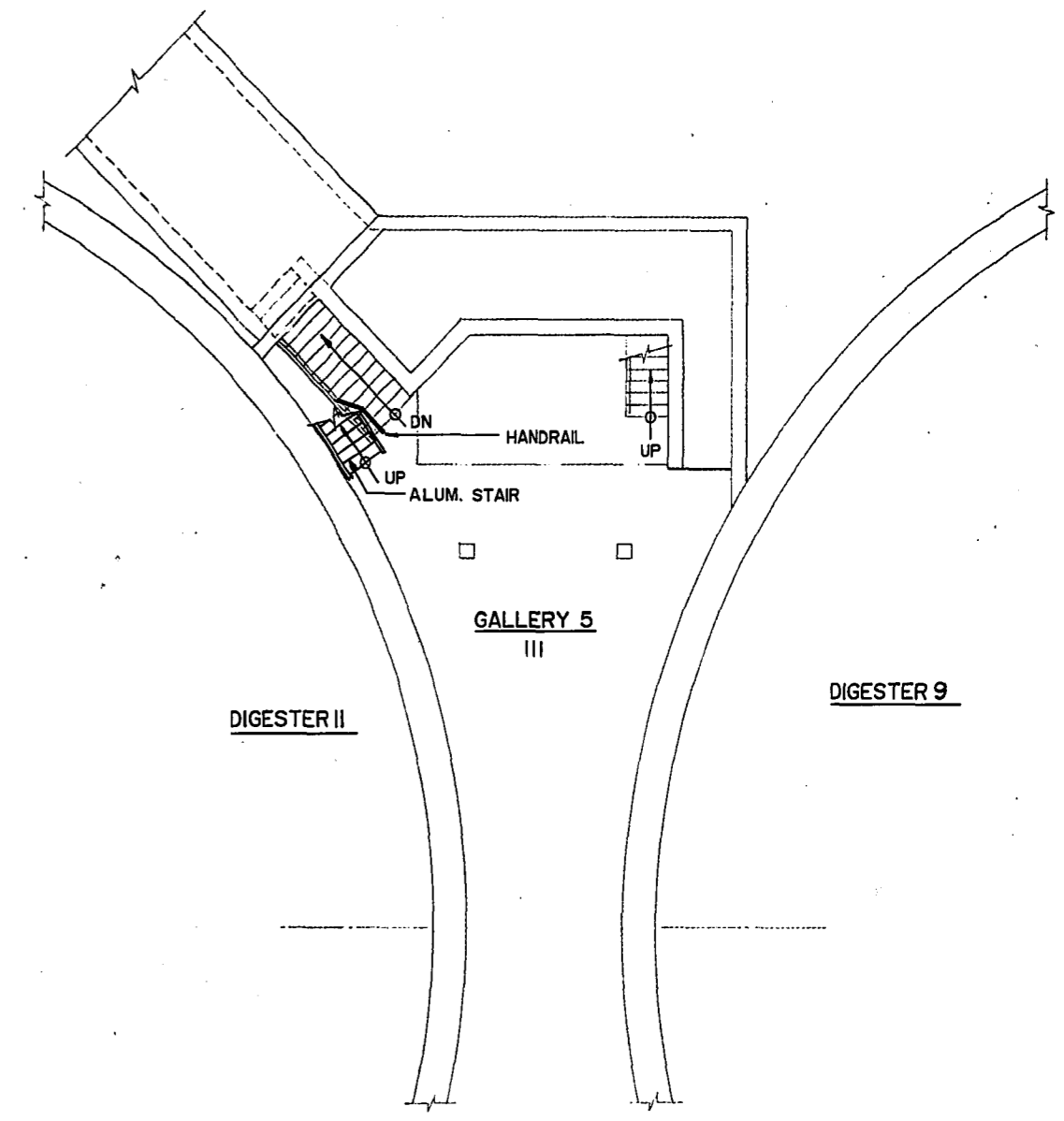
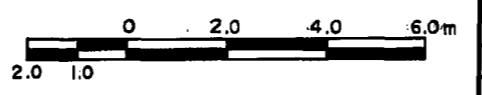
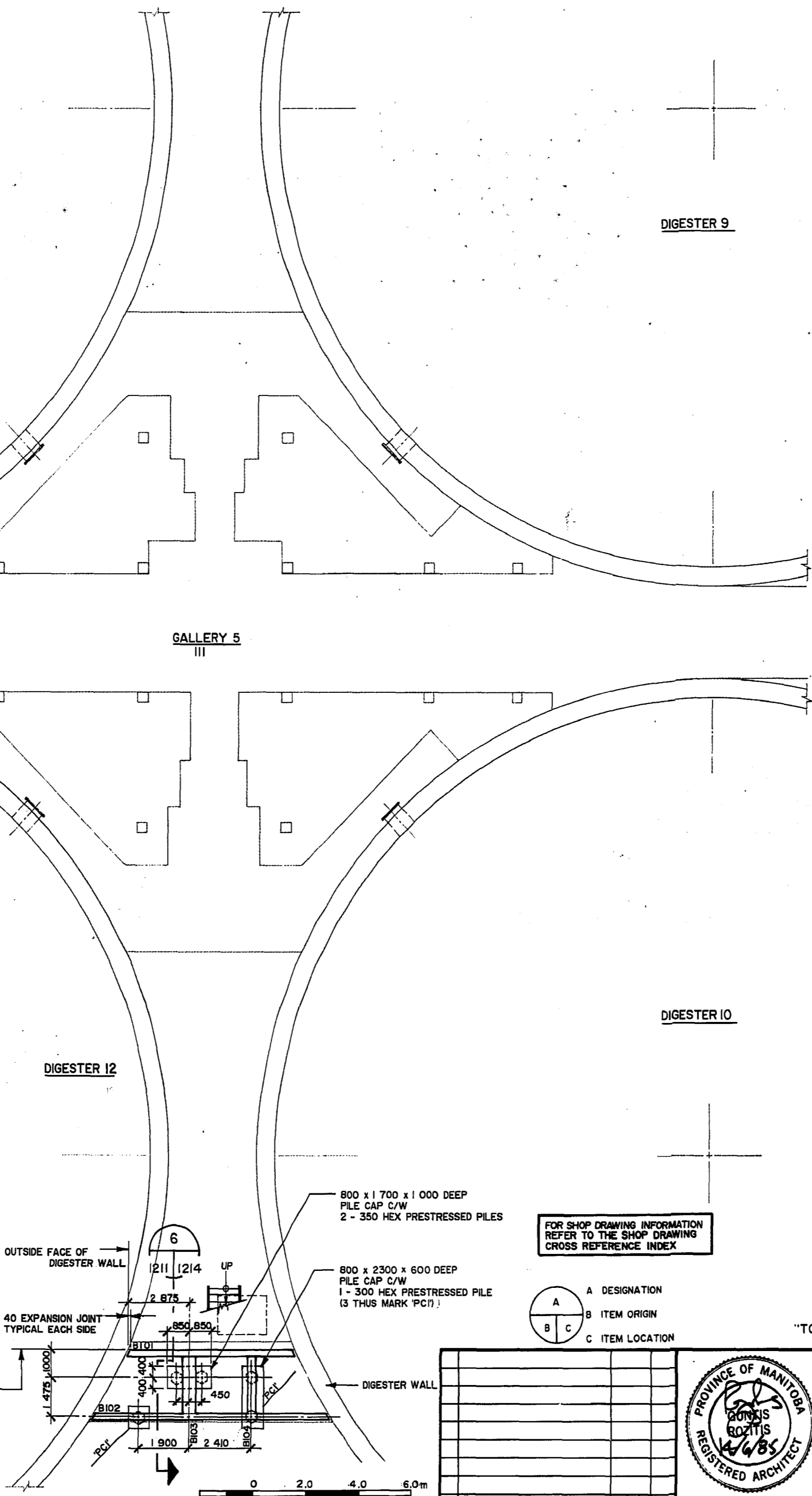
- 1 OPENINGS THROUGH EXISTING WALLS & FLOORS FOR PIPES
- SEE PROCESS & MECHANICAL DRAWINGS FOR LOCATION AND SIZE



- BEAM REINFORCING:**
- B101 - 250 x 950
2 - 35M TOP
2 - 25M BOT
15M @ 300 HORIZ EF
10M STIRRUPS @ 300
 - B102 - 250 x 1730
2 - 30M TOP & BOT
15M @ 300 HORIZ EF
10M @ 300 STIRRUPS
 - B103 - 500 x 1160
6 - 25M TOP 1000
3 - 25M BOT
15M @ 300 HORIZ EF
10M DWLS @ 700 EF INTO B101
10M DWLS @ 1100 EF INTO B102
10M STIRRUPS @ 160
 - B104 - 250 x 1160
2 - 25M TOP 1000
2 - 25M BOT
15M @ 300 HORIZ EF
10M DWLS @ 300 EF INTO B101 & B102
10M STIRRUPS @ 300
 - B105 - 250 x 570
2 - 15M TOP & BOT
10M STIRRUPS @ 200



**FLOOR FRAMING PLAN -
GALLERY 5 SOUTH STAIR**
(T.O. SLAB EL. 230.970 UNLESS NOTED OTHERWISE)



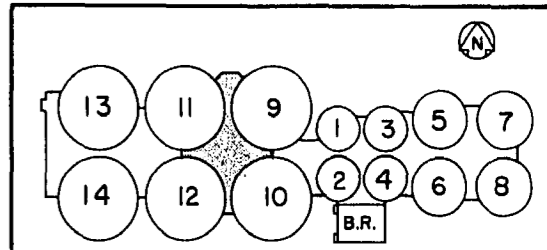
NORTH ENTRY PLAN GALLERY 5
T.O. SLAB EL 230.020

FOR SHOP DRAWING INFORMATION
REFER TO THE SHOP DRAWING
CROSS REFERENCE INDEX

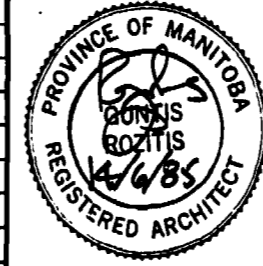
- A DESIGNATION
- B ITEM ORIGIN
- C ITEM LOCATION

"TO OBTAIN PLANT DATUM SUBTRACT 221.764 METRES"

AS CONSTRUCTED
APPROVED BY: [Signature]
DATE: 1985.02.26



KEY PLAN



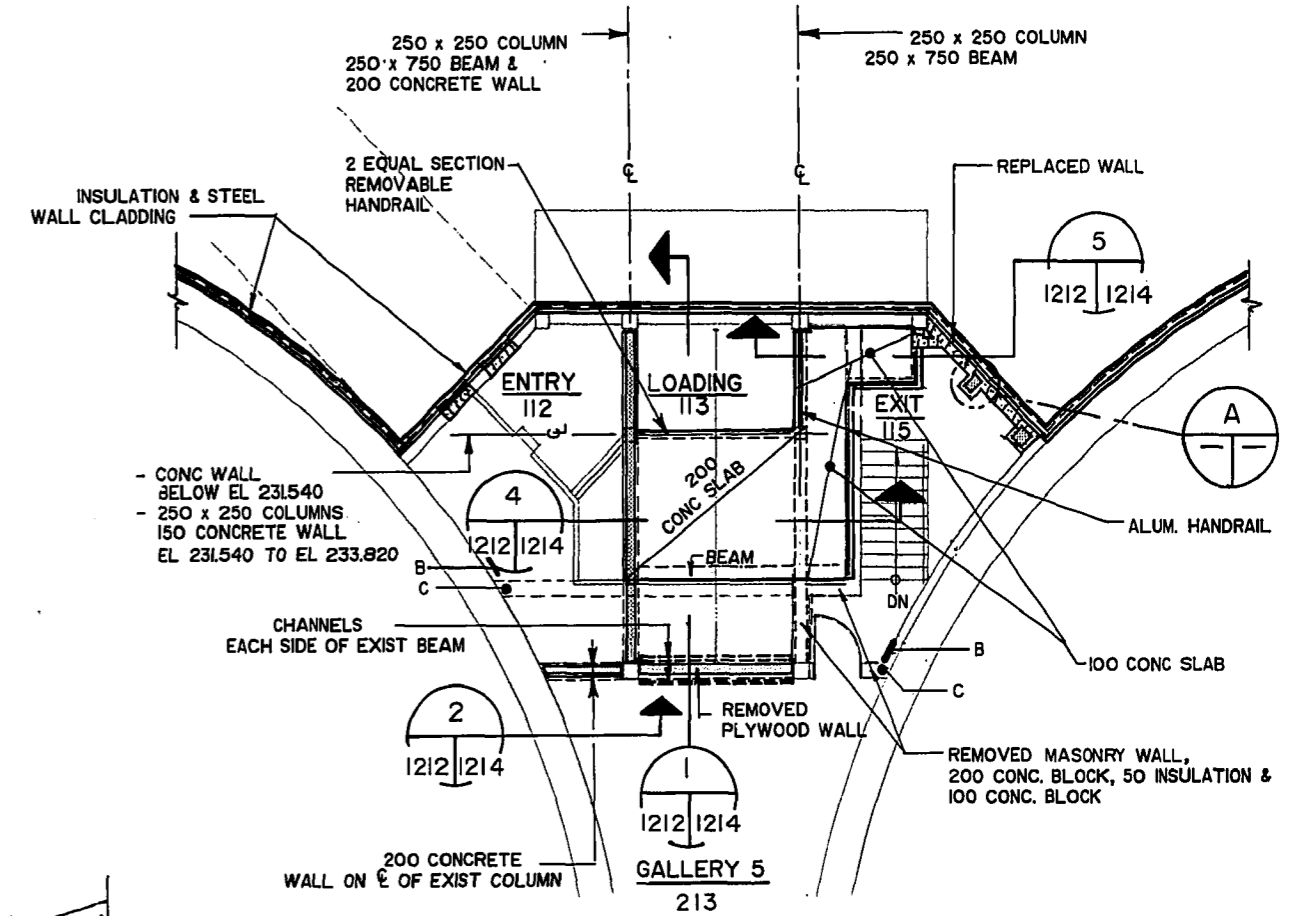
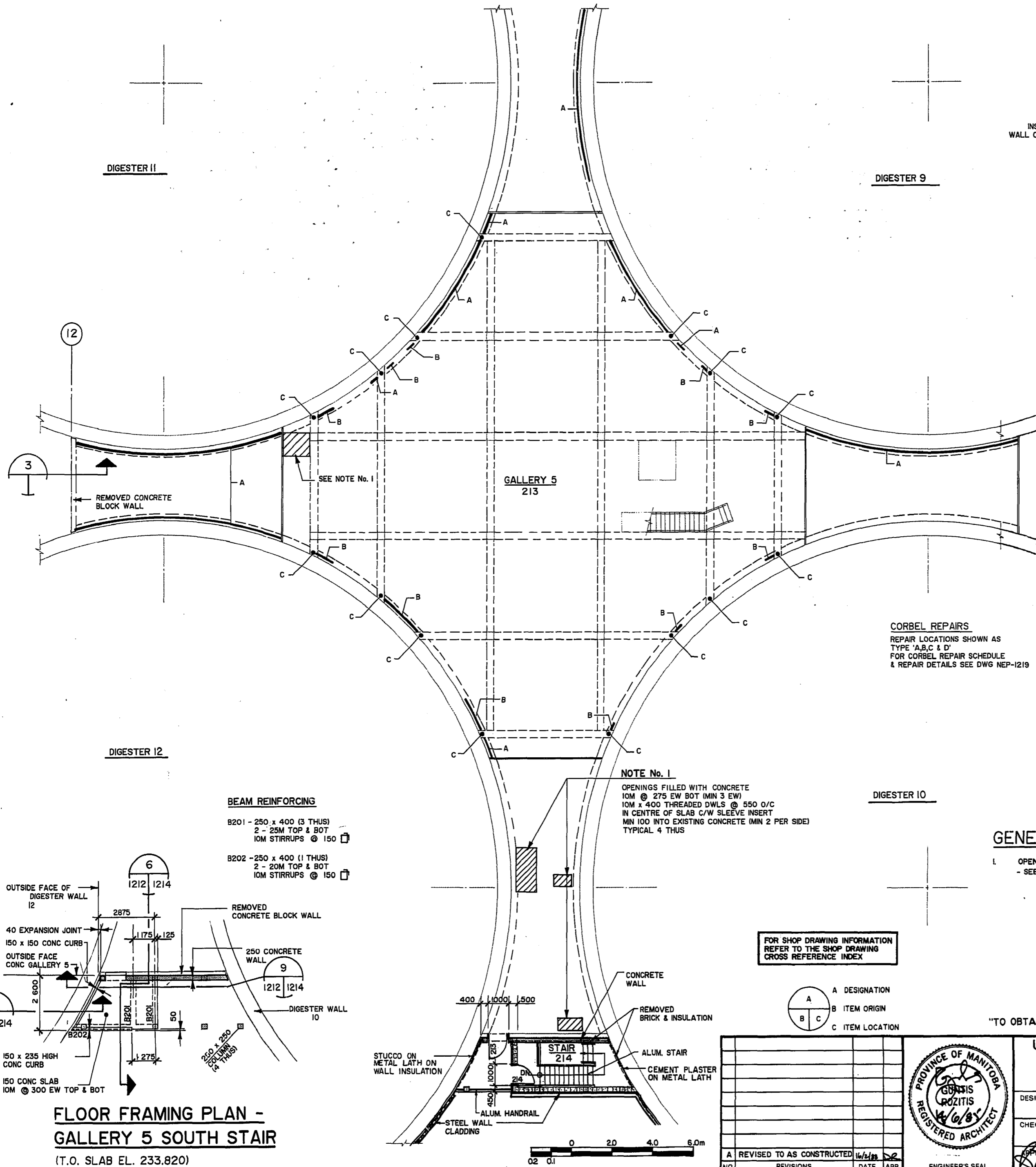
Underwood McLellan Ltd.
Consulting Engineers and Planners
GORE & STORRIE LIMITED
CONSULTING ENGINEERS

DESIGNED BY: B. BISWANGER
DRAWN BY: L.M.G.
CHECKED BY: D. ROGOWSKY
DATE: FEB./85
APPROVED BY: [Signature]
DATE: JUNE/85

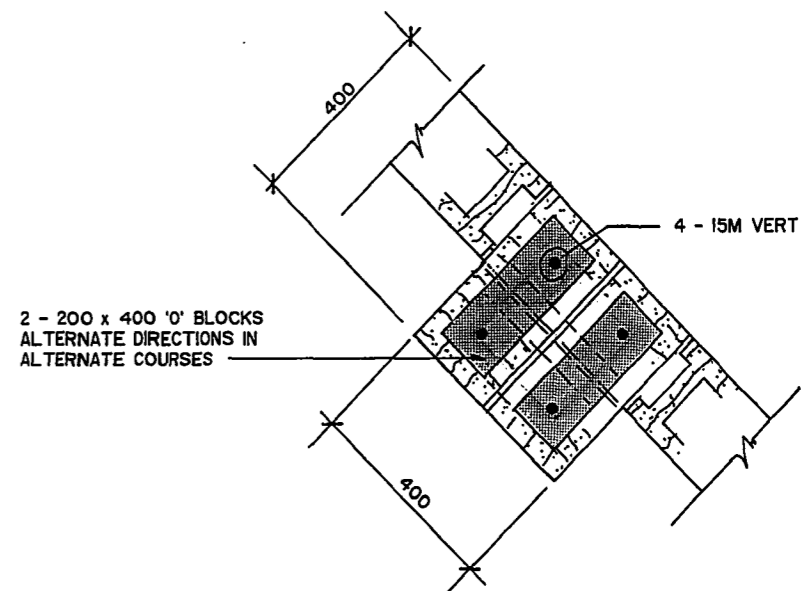
THE CITY OF WINNIPEG
WORKS & OPERATIONS
DIVISION
WATERWORKS, WASTE &
DISPOSAL DEPARTMENT

NORTH END WATER POLLUTION CONTROL CENTRE
SLUDGE DIGESTION EXPANSION
DIGESTION GALLERY No. 5
STRUCTURAL - EL 230.020
EXIT FLOOR PLANS
RELEASED FOR CONSTRUCTION: [Signature]
DATE: 7/6/85
SCALE: AS SHOWN
DRAWING NO.: **NEP-1211**

NO.	REVISIONS	DATE	APP.
A	REVISED TO AS CONSTRUCTED	11/17/85	[Signature]



NORTH ENTRY PLAN GALLERY 5
(T.O. SLAB EL. 233.820)



DETAIL A

CORBEL REPAIRS
REPAIR LOCATIONS SHOWN AS TYPE 'A,B,C & D' FOR CORBEL REPAIR SCHEDULE & REPAIR DETAILS SEE DWG NEP-1219

NOTE No. 1
OPENINGS FILLED WITH CONCRETE
10M @ 275 EW BOT (MIN 3 EW)
10M x 400 THREADED DWLS @ 550 O/C
IN CENTRE OF SLAB C/W SLEEVE INSERT
MIN 100 INTO EXISTING CONCRETE (MIN 2 PER SIDE)
TYPICAL 4 THUS

BEAM REINFORCING
B201 - 250 x 400 (3 THUS)
2 - 25M TOP & BOT
10M STIRRUPS @ 150
B202 - 250 x 400 (1 THUS)
2 - 20M TOP & BOT
10M STIRRUPS @ 150

GENERAL NOTES:

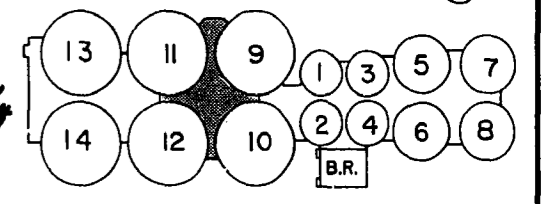
- 1. OPENINGS THROUGH EXISTING WALLS & FLOORS FOR PIPES - SEE PROCESS & MECHANICAL DRAWINGS FOR LOCATION AND SIZE

AS CONSTRUCTED
APPROVED BY: [Signature]
DATE: 1/88-03-28

FOR SHOP DRAWING INFORMATION REFER TO THE SHOP DRAWING CROSS REFERENCE INDEX

A DESIGNATION
B ITEM ORIGIN
C ITEM LOCATION

"TO OBTAIN PLANT DATUM SUBTRACT 221.764 METRES"



KEY PLAN

**NORTH END WATER POLLUTION CONTROL CENTRE
SLUDGE DIGESTION EXPANSION**

**DIGESTION GALLERY No. 5
STRUCTURAL (EL. 233.820)
EXIT FLOOR PLANS**

RELEASED FOR CONSTRUCTION: [Signature] DATE: 17/6/85
SCALE: AS SHOWN DRAWING NO: **NEP-1212**



Underwood McLellan Ltd.
Consulting Engineers and Planners
GORE & STORRIE LIMITED
CONSULTING ENGINEERS

DESIGNED BY: B. BISWANGER DRAWN BY: L.M.G.
CHECKED BY: D. ROGOWSKY DATE: FEB/85
APPROVED BY: [Signature] DATE: JUNE/85

THE CITY OF WINNIPEG
WORKS & OPERATIONS DIVISION
WATERWORKS, WASTE & DISPOSAL DEPARTMENT

NO.	REVISIONS	DATE	APP.
A	REVISED TO AS CONSTRUCTED	11/1/85	[Signature]