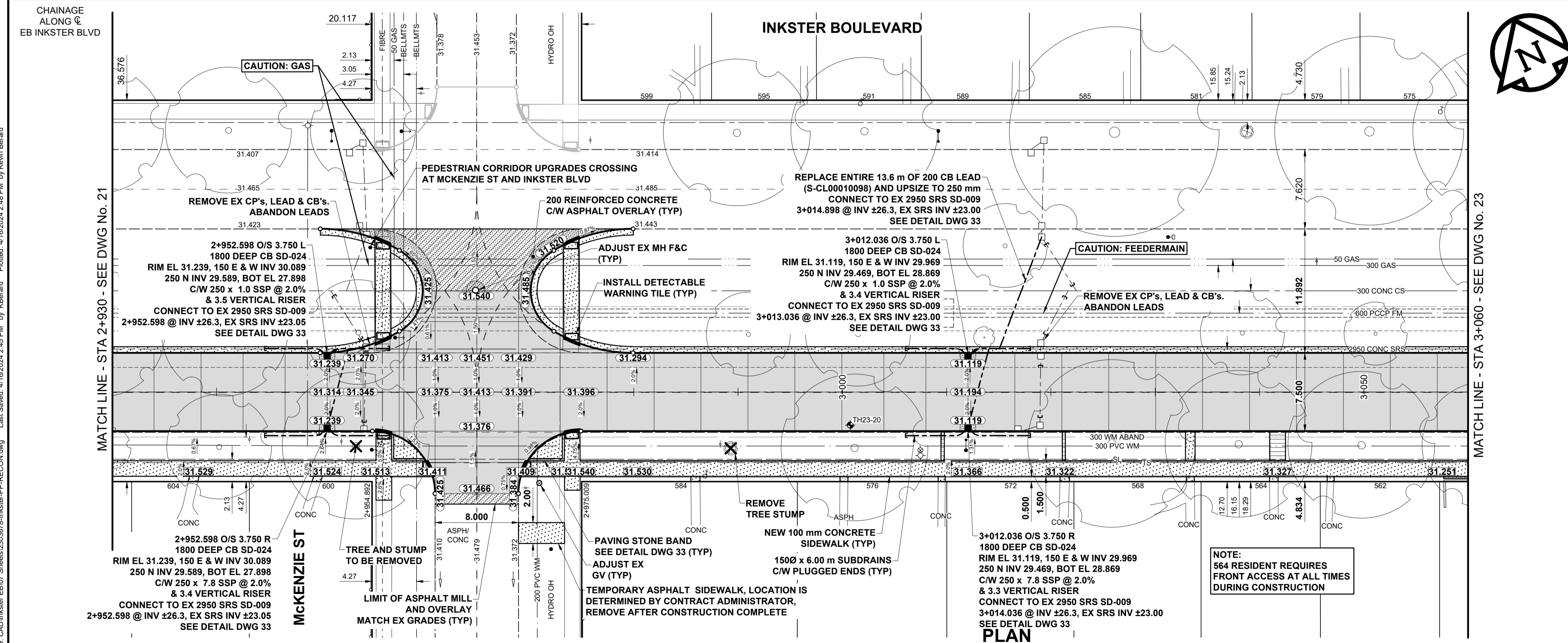


- NOTES**
- ADJUST MH AND CB RIMS TO NEW GRADES.
 - LAMP STANDARDS, HYDRO POLES, AND ANCHORS THAT REQUIRE TEMPORARY SUPPORT, REMOVAL OR REPLACEMENT, TO BE DONE SO AT THE EXPENSE OF THE CONTRACTOR AS NECESSARY.
 - CONTRACTOR TO REGRADE/RENEW EXISTING PRIVATE SIDEWALKS TO LIMITS AS SHOWN. SIDEWALKS TO BE RENEWED WITH CONCRETE UNLESS NOTED OTHERWISE.
 - CONTRACTOR TO TAKE PRECAUTIONARY STEPS TO PROTECT EXISTING TREES WITHIN THE LIMITS OF CONSTRUCTION FROM DAMAGE FROM CONSTRUCTION ACTIVITIES AS OUTLINED IN THE SPECIFICATIONS.
 - CONTRACTOR TO CONFIRM THE LOCATION OF ALL UTILITIES/SERVICES IN THE FIELD PRIOR TO CONSTRUCTION.
 - CB SD-023 & SD-024 OFFSETS ARE DIMENSIONED TO BOC. CB SD-025 OFFSETS ARE DIMENSIONED O/C. TF-100 OFFSETS ARE DIMENSIONED TO FACE OF CURB.
 - IN GENERAL, PAVEMENT AND SIDEWALK AREAS TO BE REMOVED. MATCH RECONSTRUCTION LIMITS.
 - REFER TO TENDER FOR DETAILS REGARDING TRAFFIC MANAGEMENT.
 - EXISTING LONG WATER SERVICES TO BE INSULATED (SD-018). REFER TO TENDER FOR FURTHER REQUIREMENTS AND AS NOTED IN PLAN.
 - ALL COSTS, MATERIALS AND LABOR ASSOCIATED WITH THE RESTORATION OF THE CATHODIC PROTECTED WATERMAIN WILL BE RESPONSIBILITY OF THE CONTRACTOR.
 - MODIFIED BARRIER CURB & GUTTER INLET FRAME & COVER TF-122.
 - ADD 200.000 m TO ABBREVIATED ELEVATIONS TO OBTAIN GEODETIC ELEVATIONS.
- AC WATERMAIN NOTES**
- USE OF VIBRATORY HEAVY EQUIPMENT WITHIN 3.0 METERS HORIZONTALLY OF THE ASBESTOS-CONCRETE WATER MAIN CENTERLINE IS PROHIBITED. THIS RESTRICTION DOES NOT APPLY TO THE USE OF VIBRATORY ROLLERS ON THE PAVEMENT SURFACE LAYER.
 - CONCRETE DEMOLITION AND REMOVAL WITHIN 3.0 METERS HORIZONTALLY OF THE ASBESTOS-CONCRETE WATER MAIN SHALL BE COMPLETED BY SAW CUTTING OR USE OF HAND-HELD JACKHAMMERS. USE OF MACHINE MOUNTED CONCRETE BREAKERS ABOVE ASBESTOS-CONCRETE WATER MAINS IS PROHIBITED.



- FEEDERMAIN NOTES**
- CONTACT THE WATER AND WASTE DEPARTMENT'S CONSTRUCTION SERVICES COORDINATOR AT 204-986-4289, 7 DAYS PRIOR TO THE COMMENCEMENT OF CONSTRUCTION TO ARRANGE FOR AN INSPECTION.
 - PRIOR TO ANY CONSTRUCTION, THE FEEDERMAIN MUST BE EXPOSED BY A SOFT DIG METHOD SO AS TO CONFIRM DEPTH AND LOCATION.
 - A MINIMUM CLEARANCE OF 0.5 m MUST BE PROVIDED BETWEEN THE UNDERSIDE OF THE PROPOSED WORKS AND THE TOP ANY EXISTING FEEDERMAIN BY TRENCHLESS OR OPEN TRENCH.
 - DO NOT OPERATE VIBRATORY EQUIPMENT OVER OR WITHIN 3.0 m OF THE FEEDERMAIN CENTRELINE.
 - CONCRETE DEMOLITION AND REMOVAL WITHIN 3 METERS HORIZONTALLY OF THE FEEDERMAIN SHALL BE COMPLETED BY SAWCUTTING AND REMOVAL, OR BY THE USE OF HAND HELD JACKHAMMERS. USE OF MACHINE MOUNTED CONCRETE BREAKERS ABOVE THE FEEDERMAIN SHALL NOT BE PERMITTED.

METRIC
WHOLE NUMBERS INDICATE MILLIMETRES
DECIMALIZED NUMBERS INDICATE METRES

EXISTING	LEGEND - PLAN	NEW	EXISTING	LEGEND - PLAN	NEW	EXISTING	LEGEND - PLAN	NEW
	GAS		MANHOLE		CONCRETE PAVEMENT		LOCATION APPROVED	
	MTS HANDWELL/PEDESTAL		CATCH BASIN/CATCH PIT		CONC SIDEWALK/MEDIAN		UNDERGROUND STRUCTURES	
	HYDRO HANDWELL/CABINET		CURB INLET WITH BOX		ASPHALT PAVEMENT		SUPR. U/G STRUCTURES	
	CATV/FIBRE OPTIC		TREE		PAVING STONE		COMMITTEE	
	TRAFFIC SIGNALS/PIT		TEST HOLE		GRAVEL		NOTE:	
	LAND DRAINAGE SEWER		PROPERTY LINE		RAMP CURB		LOCATION OF UNDERGROUND STRUCTURES	
	SANITARY/COMBINED SEWER		SURVEY BAR		PLANING/REMOVAL		NOTE:	
	CB LEAD/SSP/DCP		FENCE				NOTE:	
	WATERMAIN		BOC/EDGE OF PAVEMENT				NOTE:	
	SUBDRAIN		ELEVATION				NOTE:	
	DITCH		TRAFFIC SIGN				NOTE:	

PLAN
SCALE: 1:250

NOTE: LOCATION OF UNDERGROUND STRUCTURES AS SHOWN ARE BASED ON THE BEST INFORMATION AVAILABLE BUT NO GUARANTEE IS GIVEN THAT ALL EXISTING UTILITIES ARE SHOWN OR THAT THE GIVEN LOCATIONS ARE EXACT. CONFIRMATION OF EXISTENCE AND EXACT LOCATION OF ALL SERVICES MUST BE OBTAINED FROM THE INDIVIDUAL UTILITIES BEFORE PROCEEDING WITH CONSTRUCTION.

No.	REVISIONS	DATE	BY
C	ISSUED FOR ADDENDUM 2	24/04/16	GFC
B	ISSUED FOR TENDER	24/03/22	GFC
A	ISSUED FOR CLIENT REVIEW	24/03/20	GFC

DESIGNED BY: GFC
CHECKED BY: RPB
DRAWN BY: KMB
APPROVED BY: RPB

RELEASED FOR CONSTRUCTION

HOR SCALE: 1:250
VERT SCALE: 1:10

DATE: MARCH 20, 2024

PROFESSIONAL'S SEAL

G.F. COOLIDGE
Member
24465
2024-04-17
REGISTERED PROFESSIONAL ENGINEER

CONSULTANT FILE NAME
2303678-Inkster-PP-RECON.dwg

THE CITY OF WINNIPEG
PUBLIC WORKS DEPARTMENT
ENGINEERING DIVISION

2024-2025 REGIONAL STREET RENEWAL PROGRAM
EB INKSTER BOULEVARD
SINCLAIR STREET TO MAIN STREET
PAVING AND GRADING
STA 2+940 TO STA 3+060

CITY DRAWING NUMBER: P-3575-22
SHEET OF: 22 OF 33
DRAWING NUMBER: 22

TENDER No. 155-2024