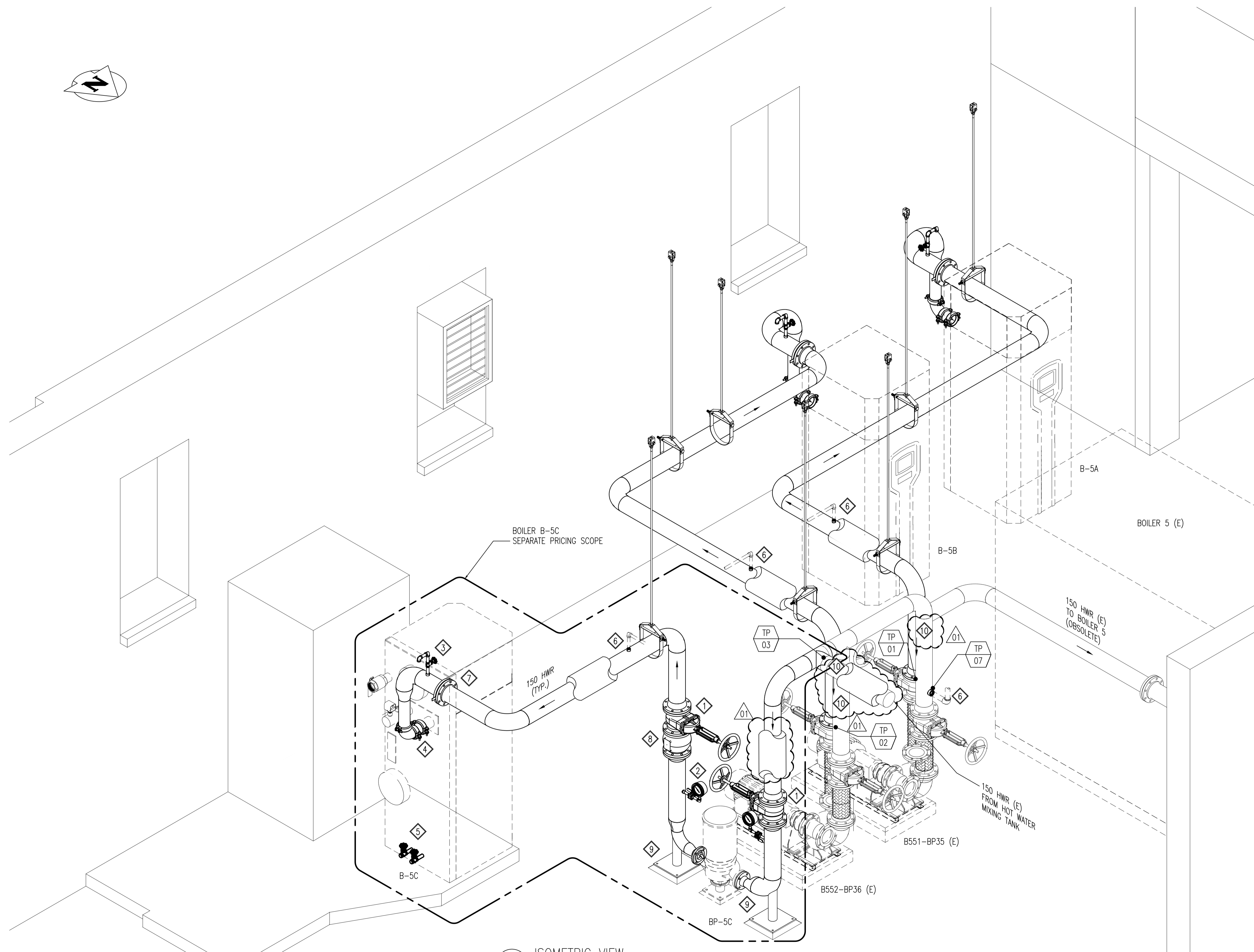


GENERAL NOTES:

- REFER TO GENERAL NOTES ON DRAWING M1.01.

KEYNOTES:

- GATE VALVES ON SUCTION AND DISCHARGE OF NEW PUMP.
- PRESSURE GAUGES ON SUCTION AND DISCHARGE OF NEW PUMP.
- HIGH POINT VENT - FIELD RUN DISCHARGE PIPING TO SAFE LOCATION NEAR FLOOR (TYPICAL).
- GROOVED-END PIPE AND FITTINGS MAY BE USED AT BOILER CONNECTION ONLY (TYPICAL).
- PROVIDE BOILER DRAIN VALVES (TYPICAL).
- CONNECTIONS FOR LOW-FLO CIRCULATION, REFER TO DRAWING M2.06 FOR DETAILS.
- PROVIDE FLANGES AND TEMPORARY STARTUP STRAINER NEAR BOILER INLET (TYPICAL).
- CHECK VALVE
- PROVIDE WELDED BASE ELBOW SUPPORTS ON EITHER SIDE OF NEW PUMP.
- INSULATE EXISTING BARE PIPING ON SUCTION SIDE OF PUMPS BP35 AND BP36.



A ISOMETRIC VIEW
SCALE: N.T.S.

10	-	-
9	-	-
8	-	-
7	-	-
6	-	-
5	-	-
4	-	-
3	-	-
2	-	-
1	-	-
NO.	DRAWING NUMBER	REFERENCE DRAWING TITLE
REFERENCE DRAWINGS		

**ENGINEERS
GEOLOGISTS
MANITOBA**
Certificate of Authorization
KGS Group
No. 245

TEMPORARY

B.M. ELEV.			
CONSTRUCTION COMPLETION DATE: YYYY MM DD			
NO.	REVISIONS	DATE	BY
1	RE-ISSUED FOR CONSTRUCTION	2023 10 18	
0	ISSUED FOR CONSTRUCTION	2023 10 05	JS

KGS GROUP	
DESIGNED BY: JS	CHECKED BY: AJF
DRAWN BY: RP	APPROVED BY: JS
SCALE: AS SHOWN	RELEASED FOR CONSTRUCTION
DATE: 2023 09 12	DATE:

ENGINEER'S SEAL
CONSULTANT DRAWING NUMBER 23-0107-010_M2.02

THE CITY OF WINNIPEG
WATER AND WASTE DEPARTMENT
ENGINEERING DIVISION
NORTH END SEWAGE TREATMENT PLANT (NEWPCC)
INTERIM BACKUP BOILER SYSTEM
AREA B - BOILER ROOM
MECHANICAL
PIPING ISOMETRIC - HOT WATER RETURN

CITY DRAWING NUMBER

SHEET 1 OF 1