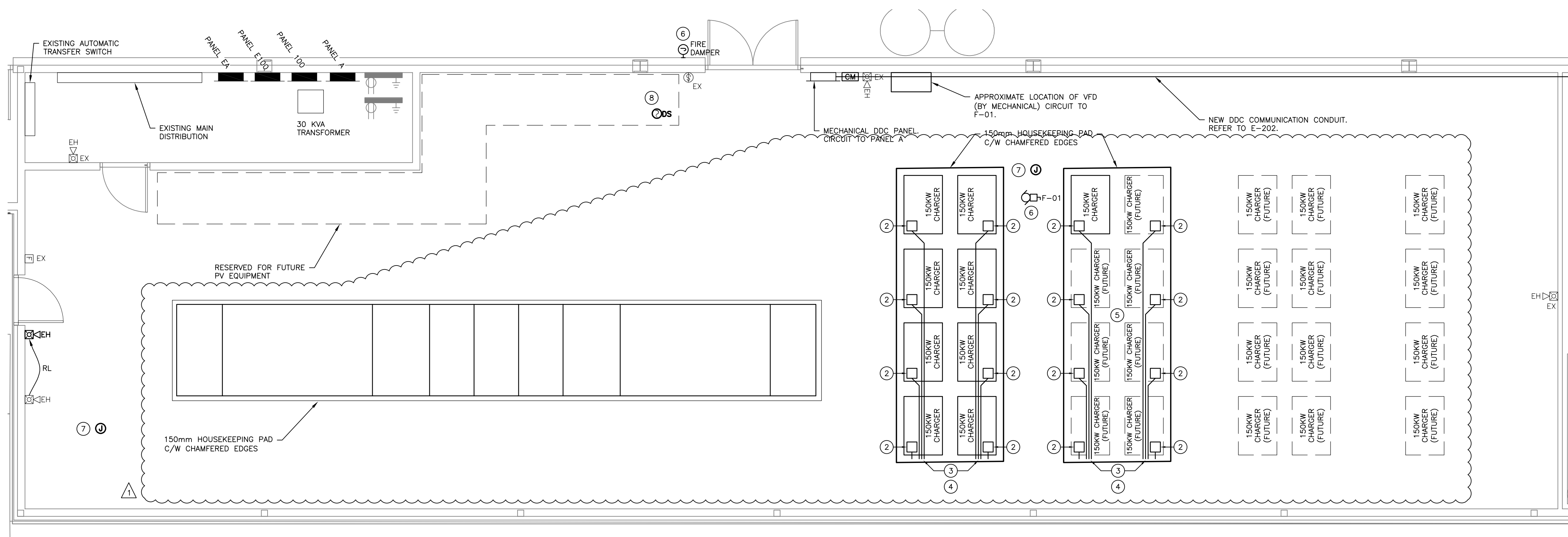


Copyright Reserved  
The Contractor shall verify and be responsible for all dimensions. DO NOT scale the drawing - any errors or omissions shall be reported to Stantec without delay.  
The Copyrights to all designs and drawings are the property of Stantec. Reproduction or use for any purpose other than that authorized by Stantec is forbidden.

Client

Legend



1 ENLARGED STORAGE ROOM EQUIPMENT LAYOUT - NEW CONSTRUCTION  
E-205 1:50

**GENERAL NOTES:**

1. ALL EQUIPMENT TO BE COORDINATED ON SITE PRIOR TO ROUGH-IN OR PLACEMENT OF EQUIPMENT.

**KEY NOTES:**

- 1 NOT USED.
- 2 FORM OUT OPENING UNDER EACH CHARGER CABINET TO FACILITATE ROUTING OF INCOMING AND OUTGOING CONDUCTORS. PROVIDE SEPARATE SCH40 PVC CONDUIT SLEEVES FOR INCOMING AC POWER, OUTGOING DC POWER (x4 PER CHARGER), AND FIBER INTERFACE (x4 PER CHARGER). COORDINATE EXACT LOCATION OF THE OPENINGS WITH THE LAYOUT OF CHARGER CABINETS. PROVIDE MULTIPLE OPENINGS TO ACCOMMODATE POWER AND COMMUNICATION CABLES WITHIN THE CABINETS AS REQUIRED. SIZE OPENINGS TO ACCOMMODATE X2 MINIMUM BENDING RADIUS FOR THE CABLES ROUTED THROUGH THE RESPECTIVE OPENINGS.
- 3 PROVIDE CONDUIT PATHS FROM CDP-BC-A TO THE RESPECTIVE CHARGERS. ROUTE CONDUITS VIA CEILING JOISTS TO MINIMIZE INTERFERENCE WITH MECHANICAL SYSTEMS. PROVIDE SUPPORTS AS NECESSARY. IF MULTIPLE CONDUCTORS ARE COMBINED IN A SINGLE CONDUIT, INCREASE CONDUCTOR SIZE IN ACCORDANCE WITH CEC TABLE 5C. PROVIDE SPACE ON THE SUPPORTING RACK TO FACILITATE ADDITION OF FUTURE CONDUITS.
- 4 EXTEND RACEWAY FOR AC AND DC DISPENSER CABLES FROM THE CHARGERS TO THE TOP CABLE TRAY. EXTEND RACEWAY FOR FIBER CABLES FROM THE PAD TO THE FIBER CABLE TRAY. PROVIDE CABLE SUPPORT IN ACCORDANCE WITH CEC AND TIA 569 REQUIREMENTS.
- 5 PROVIDE PROTECTIVE COVERS FOR THE FUTURE CABINET OPENINGS.
- 6 SUPPLY POWER TO NEW FAN F-01 FROM NEW MATCHING 20A-3P BREAKER IN PANEL 100 VIA VFD. WIRE USING 3#12 AWG IN CONDUIT. INTERLOCK VFD WITH FIRE DAMPER TO DISABLE FAN F-01 OPERATION WHEN THE FIRE DAMPER IS IN CLOSED POSITION.
- 7 SUPPLY POWER TO MOTORIZED ACTUATORS FROM NEW MATCHING 15A-1P BREAKER IN PANEL A. CONTROLS BY MECHANICAL CONTRACTOR.
- 8 PROVIDE DUCT SMOKE DETECTOR INSTALLED IN ACCORDANCE WITH MANUFACTURER'S RECOMMENDATIONS. DUCT SMOKE DETECTOR SHALL BE CUL LISTED, FULLY COMPATIBLE WITH THE FIRE ALARM SYSTEM. INTERFACE SMOKE DETECTOR WITH THE EXISTING FIRE ALARM SYSTEM. INTERFACE F-01 VFD WITH FIRE ALARM SYSTEM, AND CONFIGURE TO SHUT DOWN F-01 IN THE EVENT OF SMOKE DETECTED IN THE DUCTWORK.

Notes

Revision	Issued For	By	Appd.	Date
1	ISSUED FOR ADDENDUM #4	CB	AA	23.12.21
0	ISSUED FOR CONSTRUCTION	CB	AA	23.09.18
	File Name: 115423001_e_e-205m	CB	AA	22.05.27
		Dwn.	Chkd.	Dsgn.

Permit-Seal

ORIGINAL  
DRAWING  
SEALED BY  
A. AROUTIOUNOV  
MEMBER  
31095  
Stantec Consulting Ltd.  
2023-09-20

**ENGINEERS  
GEOSCIENTISTS  
MANITOBA**  
Certificate of Authorization  
Stantec Consulting Ltd.  
No. 1301

Client/Project  
WINNIPEG TRANSIT DIRECT CURRENT FAST  
CHARGING BUS STATIONS BRANDON GARAGE

400 Brandon Ave. Winnipeg, Manitoba

Title  
ENLARGED STORAGE ROOM  
EQUIPMENT LAYOUT -  
NEW CONSTRUCTION

Project No.	Scale	
144523001	As Indicated	
Drawing No.	Sheet	Revision

E-205 8 of 12 1