

CAUTION: FEEDERMAIN

- CONTACTED THE DEPARTMENT'S CONSTRUCTION SERVICE COORDINATOR AT 204-986-4289 7 DAYS PRIOR TO THE COMMENCEMENT OF CONSTRUCTION TO ARRANGE FOR AN INSPECTION.
- PRIOR TO ANY CONSTRUCTION THE FEEDERMAIN WAS EXPOSED BY A SOFT DIG METHOD SO AS TO CONFIRM DEPTH AND LOCATION.
- A MINIMUM CLEARANCE OF 1.0 METER WAS PROVIDED BETWEEN THE UNDERSIDE OF THE FEEDERMAIN AND THE TOP OF THE PROPOSED WORKS. THIS INSTALLATION BY TRENCHLESS METHOD ONLY.

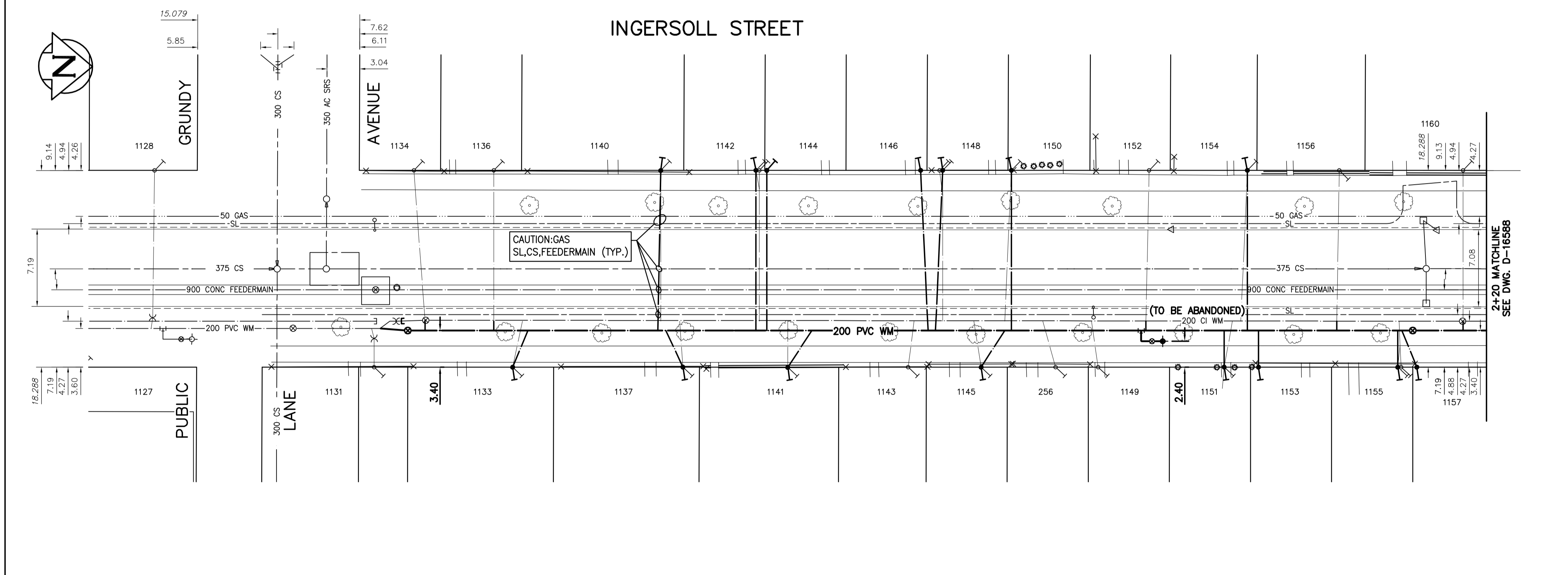
- A MINIMUM CLEARANCE OF 0.5 METERS WAS PROVIDED BETWEEN THE UNDERSIDE OF THE PROPOSED WORKS AND THE TOP OF THE EXISTING FEEDERMAIN. BY TRENCHLESS OR OPEN TRENCH.
- A SHAFT MUST BE EXCAVATED BY SOFT DIG METHODS 4.0 METERS FROM THE CENTRELINE OF FEEDERMAIN TO CONFIRM THE ALIGNMENT AND THE ELEVATION OF THE DRILLING ROD BEFORE IT CROSSED OVER OR UNDER THE FEEDERMAIN. THIS CONFIRMATION MUST BE WITNESSED BY A CITY REPRESENTATIVE.

- REVERSE TAP MAY BE REQUIRED FOR LONG SIDE WATER SERVICE RENEWALS TO BE ABLE TO ACHIEVE MINIMUM OF 1.0 METER CLEARANCE BELOW THE FEEDERMAIN

ADDRESS	PIPE SIZE & MATERIAL (STREET)	PIPE SIZE & MATERIAL (PROP.)	SHORT & LONG MEASUREMENT	CORP. LOCATION	REMARKS
1131 INGERSOLL ST	CU	CU	0.12 S/NBL	0.4 S CS	OUTSIDE LIMIT OF WORK
1133 INGERSOLL ST	LEAD	LEAD	0.64 S/NPL HSE #1131	0.91 N CS	RENEW SERVICE
1134 INGERSOLL ST	CU	LEAD	1.52>NNL RICHARD AVE	OPP CS	RECONNECT SERVICE
1136 INGERSOLL ST	CU	LEAD	OPP CENTRE OF BASEMENT	OPP CS	RECONNECT SERVICE
1137 INGERSOLL ST	LEAD	LEAD	1.52>NNL HSE	0.3 S CS	RENEW SERVICE
1140 INGERSOLL ST	LEAD	LEAD	2.13>NNL HSE	OPP CS	RENEW SERVICE
1141 INGERSOLL ST	CU	CU	8.23>NNL HSE	OPP CS	RENEW SERVICE
1142 INGERSOLL ST	LEAD	LEAD	0.61>NNL #1142	OPP CS #1144	RENEW TO PL W/20 CU WYED W/1144 (SEPARATE SERVICES)
1143 INGERSOLL ST	CU	LEAD	1.68>NNL HSE	0.61 N CS	RECONNECT SERVICE
1144 INGERSOLL ST	LEAD	LEAD	0.3>NNL HSE	OPP CS	RENEW TO PL W/20 CU WYED W/1142 (SEPARATE SERVICES)
1145 INGERSOLL ST	CU	LEAD	2.44>NNL HSE	0.61 S CS	RENEW SERVICE
1146 INGERSOLL ST	OPP S/L	OPP S/L	134.11 SSL NOTRE DAME AVE	OPP CS	RENEW TO PL W/20 CU WYED W/1148 (SEPARATE SERVICES)
1147 INGERSOLL ST	CU	LEAD	53.64>NNL RICHARD AVE	1.22 S CS	RECONNECT SERVICE
1148 INGERSOLL ST	LEAD	LEAD	0.3>NNL HSE	OPP CS	RENEW TO PL W/20 CU WYED W/1146 (SEPARATE SERVICES)
1149 INGERSOLL ST	CU	LEAD	OPP S/L HSE	0.61 S CS	RECONNECT SERVICE
1150 INGERSOLL ST	LEAD	LEAD	0.3>NNL HSE	0.61 S CS	RENEW SERVICE
1151 INGERSOLL ST	CU	LEAD	2.44 SSL #1153	0.91 N CS	RENEW TO PL W/20 CU WYED W/1153 (SEPARATE SERVICES)
1152 INGERSOLL ST	CU	LEAD	1.52>NNL HSE	0.3 S CS	RECONNECT SERVICE
1153 INGERSOLL ST	CU	LEAD	2.44 SSL #1153	0.91 N CS	RENEW TO PL W/20 CU WYED W/1151 (SEPARATE SERVICES)
1154 INGERSOLL ST	LEAD	LEAD	OPP NL #1154	0.61 S CS	RENEW SERVICE
1155 INGERSOLL ST	CU	CU	115.15 SSL NOTRE DAME AVE	OPP CS	RENEW TO PL W/20 CU WYED W/1157 (SEPARATE SERVICES)
1156 INGERSOLL ST	CU	CU	1.8 S NBL	0.2 S CS	RECONNECT SERVICE
1157 INGERSOLL ST	LEAD	LEAD	1.7>NNL #1155	OPP CS	RENEW TO PL W/20 CU WYED W/1155 (SEPARATE SERVICES)
1160 INGERSOLL ST	CU	CU	0.3>NNL HSE	OPP CS	RECONNECT SERVICE

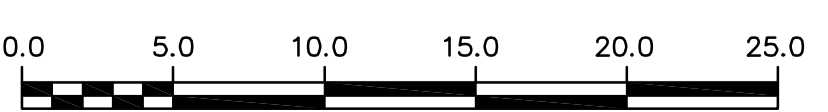
*SERVICES TO BE RENEWED TO R

NOTE: CHAINAGES SHOWN ARE ALONG CENTRE LINE OF ROW



NOTE: VALVES TO BE INSTALLED COUNTER-CLOCKWISE TO CLOSE

FOR INDEX SEE D-16584



METRIC
WHOLE NUMBERS INDICATE MILLIMETRES
DECIMALIZED NUMBERS INDICATE METRES

ENGINEERS GEOSCIENTISTS MANITOBA
Certificate of Authorization
Stantec Consulting Ltd.
No. 1301

LOCATION APPROVED UNDERGROUND STRUCTURES

SUPV. U/G STRUCTURES COMMITTEE DATE

NOTE:
LOCATION OF UNDERGROUND STRUCTURES AS SHOWN ARE BASED ON THE BEST INFORMATION AVAILABLE BUT NO GUARANTEE IS GIVEN THAT ALL EXISTING UTILITIES ARE SHOWN OR THAT THE GIVEN LOCATIONS ARE EXACT. CONFIRMATION OF EXISTENCE AND EXACT LOCATION OF ALL SERVICES MUST BE OBTAINED FROM THE INDIVIDUAL UTILITIES BEFORE PROCEEDING WITH CONSTRUCTION.

B.M. 36-7 ELEV. 232.065m	88R609 - N.W. Cor. Notre Dame Ave. & McPhillips St. in traffic island. Brass plug in 14m Conc. pile beneath Valve Box. 2.7m S. of N.L. of Notre Dame Ave. produced from the W. & 0.3m W. of W.L. McPhillips St. produced from the N.
DESIGNED BY	RS
CHECKED BY	RS
DRAWN BY	OS
APPROVED BY	RS
RELEASED FOR CONSTRUCTION	<i>R. Lucky</i> 2023.04.04
SCALE:	HORIZONTAL 1:250 VERTICAL 1:50
DATE	2023.02.21
DATE	2023.04.20

Stantec

DESIGNED BY RS
CHECKED BY RS
DRAWN BY OS
APPROVED BY RS
RELEASED FOR CONSTRUCTION
R. Lucky
2023.04.04

ENGINEER'S SEAL

ORIGINAL SEALED BY
R.M. SHERLOCK
P. ENG.
2023-04-05

CONSULTANT DRAWING NUMBER
C-203

THE CITY OF WINNIPEG
WATER AND WASTE DEPARTMENT
ENGINEERING DIVISION

2023 WATER MAIN RENEWALS
CONTRACT 7
INGERSOLL STREET
GRUNDY AVENUE TO
104.9 E OF GRUNDY AVENUE

SHEET 5 OF 15
CITY DRAWING NUMBER
D-16587