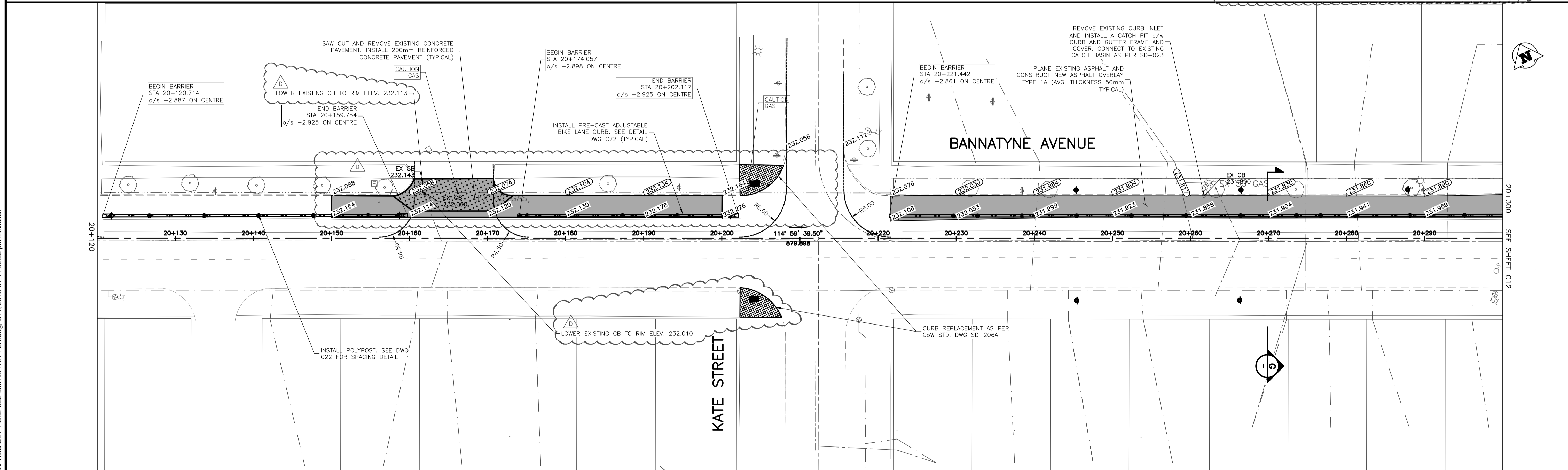


**ENGINEERS**  
**GEOSCIENTISTS**  
**MANITOBA**  
 Certificate of Authorization  
 Urban Systems Ltd.  
 No. 5053

- GENERAL NOTES:**
- DESIGN GRADES ARE TO BE CONFIRMED ONCE PLANING HAS BEEN COMPLETED.
  - ADJUST VALVES TO MATCH FINAL GRADES.
  - ADJUST PAVEMENT MANHOLE AND CATCH BASIN FRAMES 50mm BELOW FINAL GRADE TO ACCOMMODATE A RISER RING FOR FINAL ASPHALT PAVING OPERATIONS.
  - MAINTAIN TRAFFIC AS OUTLINED IN THE TRAFFIC MANAGEMENT SPECIFICATION.
  - RADIi CURB RENEWAL ON INTERSECTING STREETS & BACK LANES TO BE MODIFIED BARRIER CURB AS REQUIRED.
  - CONCRETE REPAIRS TO BE CONFIRMED BY THE CONTRACT ADMINISTRATOR.
  - CURB AND SIDEWALK RENEWAL AS DIRECTED BY THE CONTRACT ADMINISTRATOR.
  - MAINTAIN 25-75mm OF REVEAL ON THE SIGNAL BASES.
  - SEE DWG C22 FOR ADJUSTABLE CURB AND END UNIT DETAILS.
  - NEW CURB TO BE TIED TO EXISTING OVER 2.0m. SEE DWG C23 FOR DETAIL.
  - INSTALL DETECTABLE TILE AS PER CW 3326



150 mm W.M.	WATERMAIN	150 mm W.M.	HYDRO	ADJUSTABLE CURB	LOCATION APPROVED UNDERGROUND STRUCTURES
300mm L.D.S.	HYDRANT	300mm L.D.S.	M.T.S.	ADJUSTABLE END UNIT	
250mm W.W.S.	VALVE	250mm W.W.S.	CONCRETE	DECORATIVE LIGHT	
	LAND DRAINAGE SEWER		ASPHALT	POLYPOST	
	WASTEWATER SEWER		PROPERTY LINE		
	MANHOLE		SURVEY BAR		
	CATCH BASIN	235.750	ELEVATION (35.750)		
	CURB INLET		TREE		
	JUNCTIONS		SIDEWALK DETECTABLE		
	CULVERT		CONCRETE SIDEWALK		
	GAS		FENCE		
EXISTING	LEGEND - PLAN	PROPOSED	EXISTING	LEGEND - PROFILE	PROPOSED

**LOCATION APPROVED UNDERGROUND STRUCTURES**

SUPV. U/G STRUCTURES COMMITTEE DATE

NOTE:  
 LOCATION OF UNDERGROUND STRUCTURES AS SHOWN ARE BASED ON THE BEST INFORMATION AVAILABLE. BUT NO GUARANTEE IS GIVEN THAT ALL EXISTING UTILITIES ARE SHOWN OR THAT THE GIVEN LOCATIONS ARE EXACT. CONFIRMATION OF EXISTENCE AND EXACT LOCATION OF ALL SERVICES MUST BE OBTAINED FROM THE INDIVIDUAL UTILITIES BEFORE PROCEEDING WITH CONSTRUCTION.

B.M. ELEV.	DATE	BY
A 60% DETAIL DESIGN	2018-01-34	GS
B 90% DETAIL DESIGN	2018-03-12	GS
C ISSUED FOR TENDER	2018-03-28	GS
D ADDENDUM No.1	2018-04-11	GS
NO. REVISIONS	DATE	BY

**URBAN systems**

DESIGNED BY: M. Nikolich  
 CHECKED BY: G. Smith  
 DRAWN BY: M. Nikolich  
 APPROVED BY: G. Propp  
 HOR. SCALE: 1:250  
 VERTICAL: RELEASED FOR CONSTRUCTION BY:  
 DATE: APRIL 11, 2018

ENGINEER'S SEAL

NOT FOR CONSTRUCTION

CONSULTANT DRAWING NO. 3354.0011.01 C11

**THE CITY OF WINNIPEG**  
 PUBLIC WORKS DEPARTMENT  
 ENGINEERING DIVISION

McDermot Bannatyne Adjustable Bike Lanes  
 Bannatyne Avenue  
 Plan  
 Station 19+950 to 20+300

SHEET 11 OF 36  
 CAD FILE DRAWING NUMBER C02-C22-3354001101-PLN.DWG  
 CITY DRAWING NUMBER P-3496-11

U:\Projects\_VAN\3354001101\1D-Design\CAD\PRO\102-C22-3354001101-PLN.dwg, C11, 2018-04-11 02:55 pm mnikolich