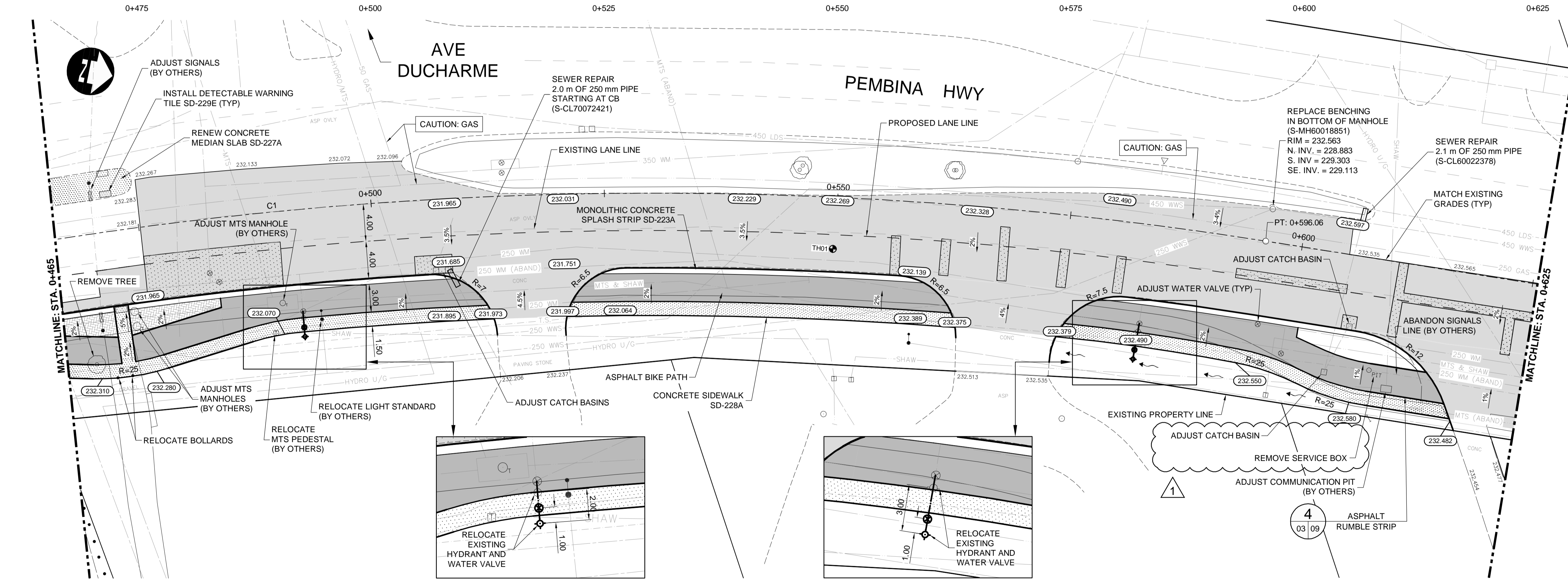
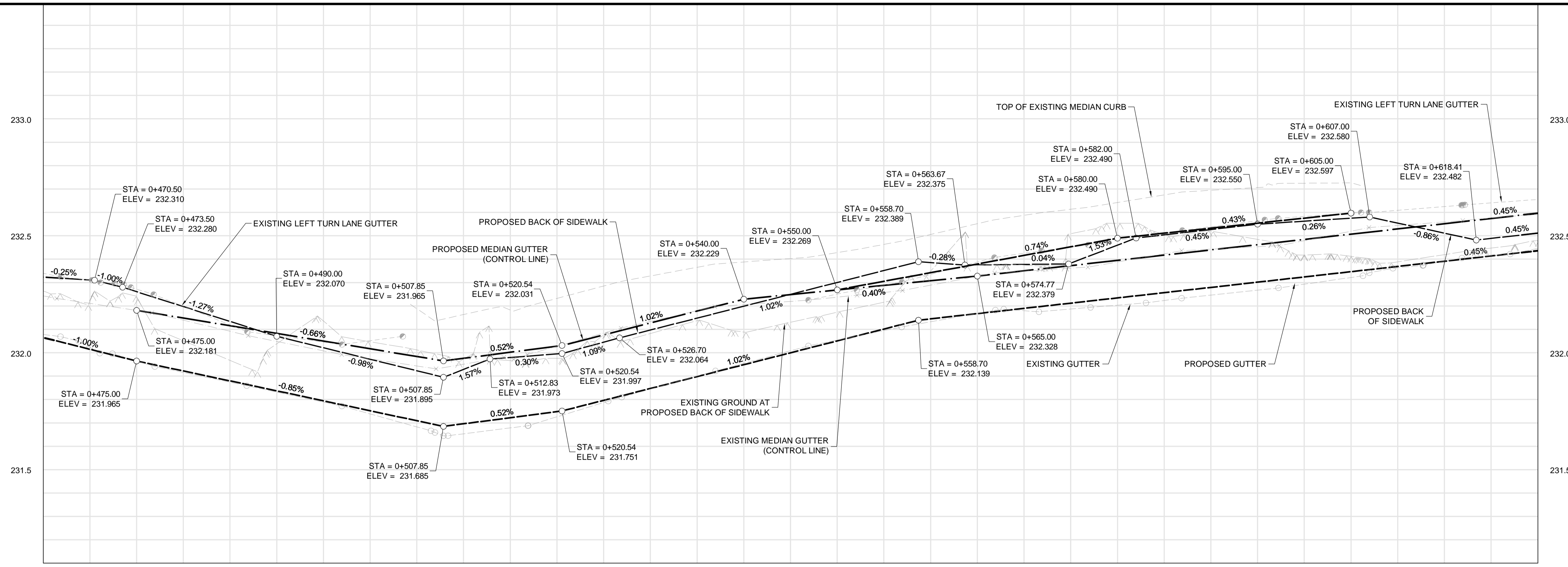


CONSTRUCTION NOTES:

1. ALL DIMENSIONS ARE TO BACK OF CURB.
2. ISOLATE MISCELLANEOUS ITEMS IN NEW CONCRETE WORKS AS PER SD-228C.
3. LEGAL PLAN AND UNDERGROUND INFORMATION FROM CITY OF WINNIPEG LBIS. CONTRACTOR TO VERIFY ALL UNDERGROUNDS IN THE FIELD.
4. CONTRACTOR TO TAKE PRECAUTIONARY STEPS TO AVOID DAMAGE FROM CONSTRUCTION ACTIVITIES TO TREES WITHIN THE LIMITS OF CONSTRUCTION.
5. LOCATION OF EXISTING SERVICES TO BE CONFIRMED IN THE FIELD BY THE CONTRACTOR.
6. CB LEADS TO BE INSTALLED AT MIN. 1.0% SLOPE OR AS DIRECTED BY CONTRACT ADMINISTRATOR.
7. LIMITS OF SIDEWALK RENEWAL TO BE FINALIZED IN THE FIELD BY THE CONTRACT ADMINISTRATOR.
8. LIMITS OF BOULEVARD GRADING TO BE FINALIZED IN THE FIELD BY THE CONTRACT ADMINISTRATOR.



METRIC

WHOLE NUMBERS INDICATE MILLIMETRES
DECIMAL NUMBERS INDICATE METRES

WARNING

IF POWER EQUIPMENT OR EXPLOSIVES ARE TO BE USED FOR EXCAVATION ON THIS PROJECT THE CONTRACTOR MUST:

1. NOTIFY THE GAS COMPANY OF THE PROPOSED LOCATION OF EXCAVATION.
2. TAKE PRECAUTION TO AVOID DAMAGE TO GAS COMPANY INSTALLATIONS SEE PROVINCIAL REGULATION 210/72 FOR DETAILS.
3. OBTAIN EXCAVATION PERMITS PRIOR TO CONSTRUCTION.



G:\CAD\176149\Drawings\Roadworks\Contract\176149-CON-CI-PLAN-PROFILE.dwg

EXISTING	LEGEND-PLAN	PROPOSED	EXISTING	LEGEND-PLAN	PROPOSED	EXISTING	LEGEND-PROFILE	PROPOSED
150 WM	WATERMAIN	150 WM	CONCRETE	CONCRETE	CONCRETE	150 WM	WATERMAIN	150 WM
300 LDS	HYDRANT	300 LDS	ASPHALT	ASPHALT	ASPHALT	300 LDS	LAND DRAINAGE SEWER	300 LDS
250 WWS	VALVE	250 WWS	PLANING	PLANING	PLANING	250 WWS	WASTE WATER SEWER	250 WWS
MANHOLE	MANHOLE	MANHOLE	SIDEWALK	SIDEWALK	SIDEWALK	HYDRANT	HYDRANT	HYDRANT
CATCH BASIN	CATCH BASIN	CATCH BASIN	PAVING STONES	PAVING STONES	PAVING STONES	VALVE	VALVE	VALVE
CURB INLET	CURB INLET	CURB INLET	PARTIAL DEPTH REPAIR	PARTIAL DEPTH REPAIR	PARTIAL DEPTH REPAIR	PROFILE	PROFILE	PROFILE
300 LDS	LAND DRAINAGE SEWER	300 LDS	PROPERTY LINE	PROPERTY LINE	PROPERTY LINE	NORTH/WEST GUTTER	NORTH/WEST GUTTER	NORTH/WEST GUTTER
250 WWS	WASTE WATER SEWER	250 WWS	DRAINAGE ARROW	DRAINAGE ARROW	DRAINAGE ARROW	SOUTH/EAST GUTTER	SOUTH/EAST GUTTER	SOUTH/EAST GUTTER
HYDRO	HYDRO	HYDRO				NORTH/WEST DITCH	NORTH/WEST DITCH	NORTH/WEST DITCH
MTS	M.T.S.	MTS				SOUTH/EAST DITCH	SOUTH/EAST DITCH	SOUTH/EAST DITCH
100 GAS	GAS	100 GAS						

UNDERGROUND STRUCTURES		B.M. ELEV.
SUPV. U/G STRUCTURES	DATE	
1	ISSUED FOR ADDENDUM 2	18/02/02
0	ISSUED FOR TENDER	18/01/17
NO.	REVISIONS	DATE

DESIGNED BY	DRAWN BY	CHECKED BY	APPROVED BY
TJH	TJH	TS	TJP
HOR. SCALE 1:250			
VERTICAL 1:10			
RELEASED FOR CONSTRUCTION			
DATE			

ENGINEER'S SEAL
CONSULTANT PROJECT NUMBER
17-6149

DILLON CONSULTING

RELEASING CONTRACTOR

THE CITY OF WINNIPEG PUBLIC WORKS DEPARTMENT

PEMBINA HIGHWAY REHABILITATION AND ACTIVE TRANSPORTATION PATH

NORTHBOUND PEMBINA - STA. 0+465 TO STA. 0+625 (PLAN-PROFILE)

CITY DRAWING NUMBER: P-3493-2018-03
SHEET 03 OF 10
CONSULTANT DRAWING NUMBER