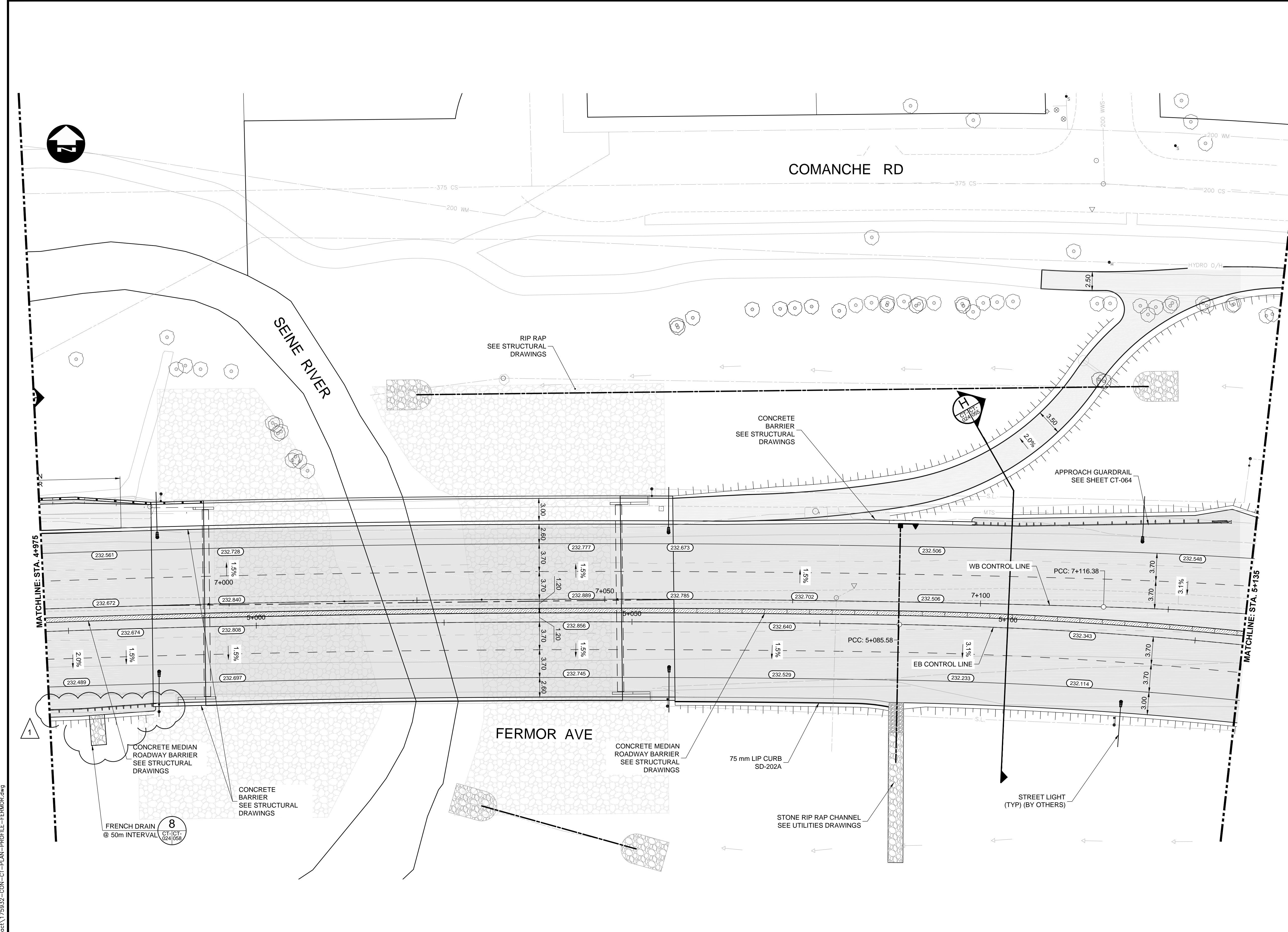


CONSTRUCTION NOTES:

- LEGAL PLAN AND UNDERGROUND INFORMATION FROM CITY OF WINNIPEG LBIS. CONTRACTOR TO VERIFY ALL UNDERGROUNDS IN THE FIELD.
- ISOLATE MISCELLANEOUS ITEMS IN NEW CONCRETE WORKS AS PER SD-228C.
- CONTRACTOR TO TAKE PRECAUTIONARY STEPS TO AVOID DAMAGE FROM CONSTRUCTION ACTIVITIES TO TREES WITHIN THE LIMIT OF CONSTRUCTION.
- CONTRACTOR TO TAKE PRECAUTIONARY STEPS TO CONTROL EROSION BY USING STRAW WATTLES, AS REQUIRED.
- LOCATION OF ALL EXISTING SERVICES TO BE CONFIRMED IN THE FIELD BY CONTRACTOR.
- CONTRACTOR SHALL CONFIRM EXISTING LEAD INVERT ELEVATIONS PRIOR TO INSTALLATION.
- ADJUST MH AND CB RIMS TO NEW GRADES.
- REFER TO LAND DRAINAGE DRAWINGS FOR ADDITIONAL UNDERGROUND INFORMATION REGARDING MANHOLES, CATCH BASINS, CULVERT ELEVATIONS, AND OUTLET DETAILS.
- REFER TO LANDSCAPE DRAWINGS FOR DETAILS ON ISLANDS, AND ADDITIONAL SURFACE WORK DETAILS.



METRIC

WHOLE NUMBERS INDICATE MILLIMETRES
DECIMALIZED NUMBERS INDICATE METRES

WARNING

IF POWER EQUIPMENT OR EXPLOSIVES ARE TO BE USED FOR EXCAVATION ON THIS PROJECT THE CONTRACTOR MUST:

- NOTIFY THE GAS COMPANY OF THE PROPOSED LOCATION OF EXCAVATION.
- TAKE PRECAUTION TO AVOID DAMAGE TO GAS COMPANY INSTALLATIONS SEE PROVINCIAL REGULATION 210/72 FOR DETAILS.
- OBTAIN EXCAVATION PERMITS PRIOR TO CONSTRUCTION.

APEGM
Certificate of Authorization
Dillon Consulting Limited (MB)
No. 1789 Date: 18/02/09

150 WM	WATERMAIN	150 WM	CONCRETE	150 WM	WATERMAIN	150 WM	WATERMAIN
300 LDS	HYDRANT	300 LDS	ASPHALT	300 LDS	LAND DRAINAGE SEWER	300 LDS	LAND DRAINAGE SEWER
250 WWS	VALVE	250 WWS	PLANING	250 WWS	WASTE WATER SEWER	250 WWS	WASTE WATER SEWER
300 LDS	MANHOLE	300 LDS	SIDEWALK	300 LDS	HYDRANT	300 LDS	HYDRANT
250 WWS	CATCH BASIN	250 WWS	PAVING STONES	250 WWS	VALVE	250 WWS	VALVE
100 GAS	CURB INLET	100 GAS	PARTIAL DEPTH REPAIR	100 GAS	Q PROFILE	100 GAS	Q PROFILE
300 LDS	LAND DRAINAGE SEWER	300 LDS	PROPERTY LINE	300 LDS	NORTH/WEST GUTTER	300 LDS	NORTH/WEST GUTTER
250 WWS	WASTE WATER SEWER	250 WWS	DRAINAGE ARROW	250 WWS	SOUTH/EAST GUTTER	250 WWS	SOUTH/EAST GUTTER
HYDRO	HYDRO	HYDRO	CURB RAMP (SD-229C)	HYDRO	NORTH/WEST DITCH	HYDRO	NORTH/WEST DITCH
MTS	M.T.S.	MTS	DETECTABLE WARNING	MTS	SOUTH/EAST DITCH	MTS	SOUTH/EAST DITCH
100 GAS	GAS	100 GAS	SURFACE TILE (SD-229AA)	100 GAS		100 GAS	
EXISTING	LEGEND-PLAN	PROPOSED	EXISTING	LEGEND-PLAN	PROPOSED	EXISTING	LEGEND-PROFILE
							PROPOSED

UNDERGROUND STRUCTURES

SUPV. U/G STRUCTURES DATE

LOCATION OF UNDERGROUND STRUCTURES AS SHOWN ARE BASED ON THE BEST INFORMATION AVAILABLE. BUT NO GUARANTEE IS GIVEN THAT ALL EXISTING UTILITIES ARE SHOWN OR THAT THE GIVEN LOCATIONS ARE EXACT. CONFIRMATION OF EXISTENCE AND EXACT LOCATION OF ALL SERVICES MUST BE OBTAINED FROM THE INDIVIDUAL UTILITIES BEFORE PROCEEDING WITH CONSTRUCTION.

B.M. ELEV.	SEE SHEET CT-001 FOR CONTROL POINT INFORMATION	DESIGNED BY	JAT
		DRAWN BY	TJH
		CHECKED BY	JNC
		APPROVED BY	JNC
1	ADDENDUM #5	HOR. SCALE	1:250
0	ISSUED FOR TENDER	VERTICAL	1:10
NO.	REVISIONS	DATE	BY

DILLON CONSULTING

DESIGNED BY: JAT
DRAWN BY: TJH
CHECKED BY: JNC
APPROVED BY: JNC

HOR. SCALE: 1:250
VERTICAL: 1:10

RELEASED FOR CONSTRUCTION

DATE: _____

ENGINEER'S SEAL

PROVINCE OF MANITOBA
REGISTERED PROFESSIONAL ENGINEER
J.N. CRANG

CONSULTANT PROJECT NUMBER
17-5932

THE CITY OF WINNIPEG
PUBLIC WORKS DEPARTMENT

FERMOR AVENUE BRIDGE OVER SEINE RIVER
BRIDGE REHABILITATION, PEDESTRIAN-CYCLIST UNDERPASS STRUCTURE AND ROADWORKS FROM ST. ANNE'S ROAD TO ARCHIBALD STREET

CITY DRAWING NUMBER: P-3489-2017-CT-024
SHEET 024 OF 067
CONSULTANT DRAWING NUMBER: CT-024

FERMOR AVENUE - STA. 4+975 TO 5+135 (PLAN)

G:\CAD\175932\Drawings\Roadworks\Contract\175932-CON-CT-PLAN-PROFILE-FERMOR.dwg