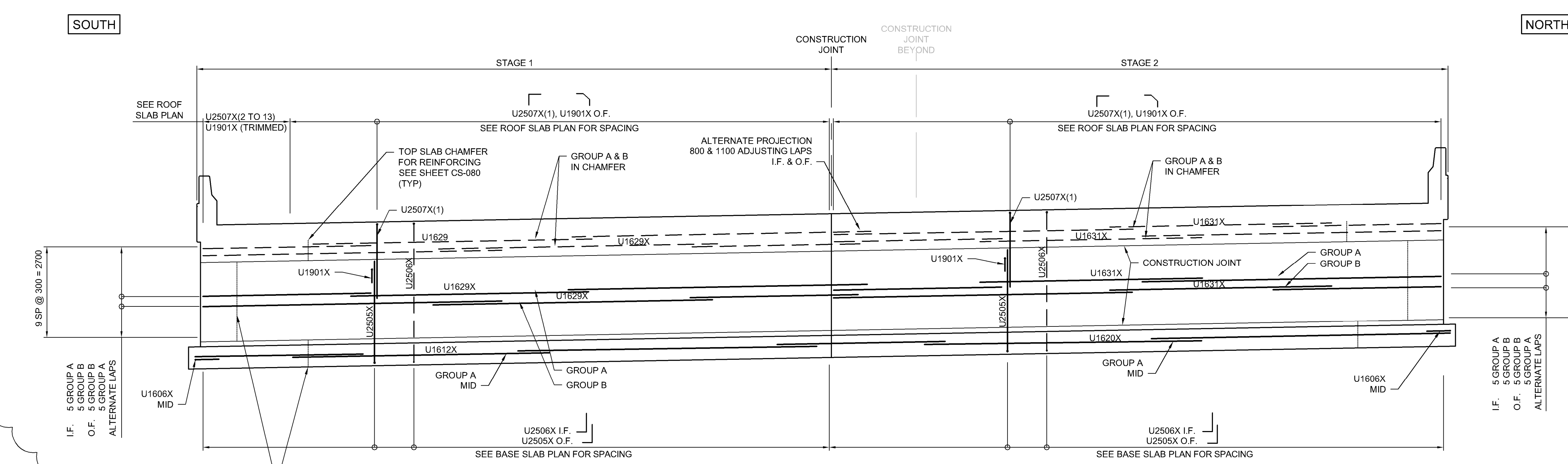


LONGITUDINAL BAR GROUPS

GROUP A	U1610X	U1611X
GROUP B	U1611X	U1610X

* CENTER BAR OF GROUP INDICATED ON PLAN

1 WEST ELEVATION REINFORCING - STAGES 1 & 2
 CS-073 1:75
 CS-074 REINFORCING FOR INSIDE FACE
 CS-075 AND OUTSIDE FACE



2 EAST ELEVATION REINFORCING - STAGES 1 & 2
 CS-073 1:75
 CS-074 REINFORCING FOR INSIDE FACE
 CS-075 AND OUTSIDE FACE

G:\CAD\175932\Drawings\Structural\Underpass\CON-CS-REIN-DETAILS_3.dwg



NO.	REVISIONS	DATE	BY
1	ADDENDUM #5	18/03/16	DRA
0	ISSUED FOR TENDER	18/02/09	DRA

DESIGNED BY	DRA	CHECKED BY	SSR
DRAWN BY	DB	APPROVED BY	MBL
HOR. SCALE	AS SHOWN	RELEASED FOR CONSTRUCTION	
VERTICAL	AS SHOWN	DATE	2018/02/09

ENGINEER'S SEAL
 PROVINCE OF MANITOBA
D.R.C. AMORIM
 Member 33215
 REGISTERED PROFESSIONAL ENGINEER
 CONSULTANT PROJECT NUMBER
17-5932

THE CITY OF WINNIPEG
 PUBLIC WORKS DEPARTMENT
Winnipeg
FERMOR AVENUE BRIDGE OVER SEINE RIVER
 BRIDGE REHABILITATION, PEDESTRIAN-CYCLIST UNDERPASS STRUCTURE AND ROADWORKS FROM ST. ANNE'S ROAD TO ARCHIBALD STREET
PEDESTRIAN-CYCLIST UNDERPASS
 REINFORCING DETAILS 5 OF 5
 CITY DRAWING NUMBER
 U-243-2017-CS-076
 SHEET **076** OF **100**
 CONSULTANT DRAWING NUMBER
CS-076