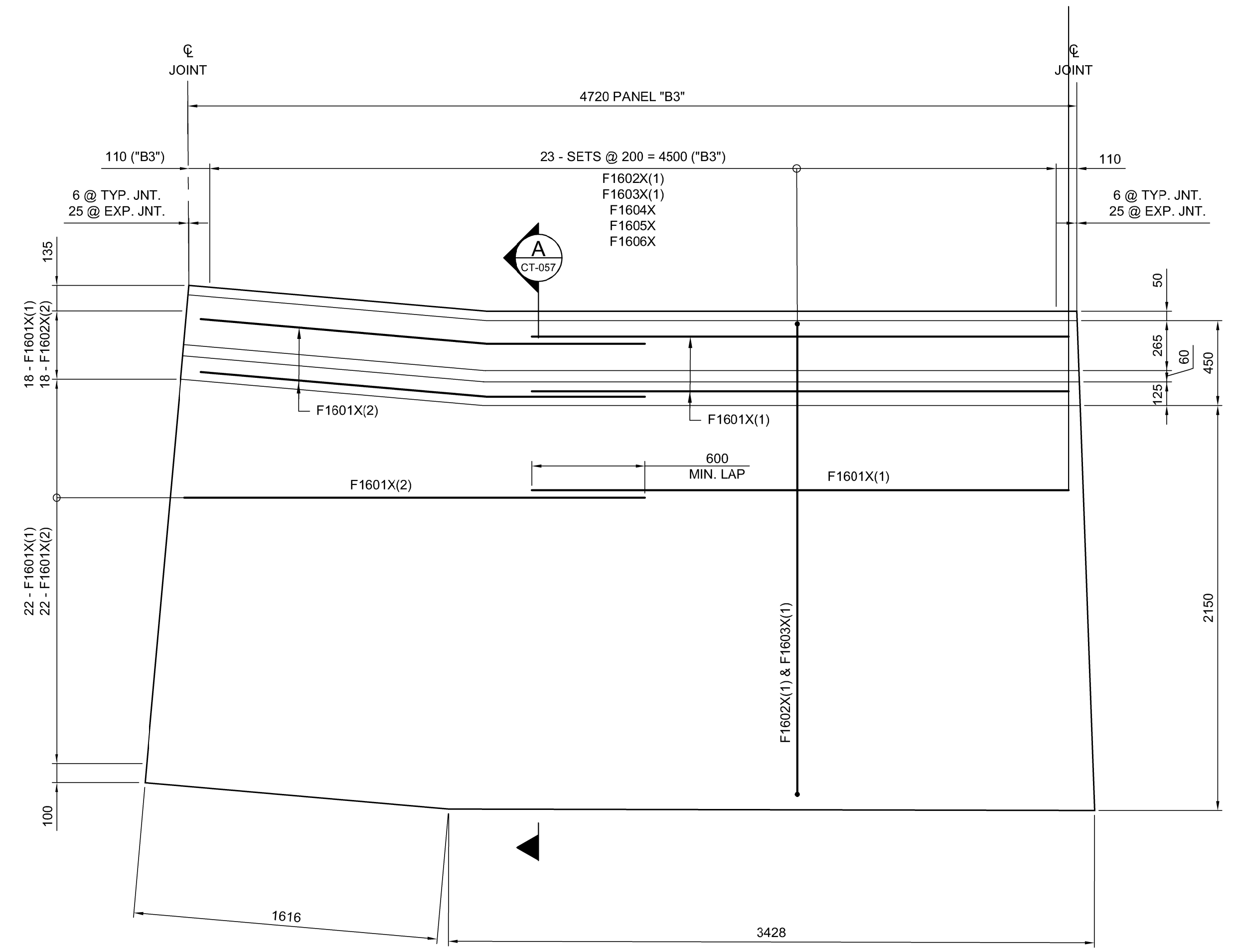


- NOTES:**
1. FOR SHOULDER BARRIER LAYOUT, REFER TO SHEETS CS-052, CS-053 & CS-068.
 2. ALL EXPOSED EDGES TO BE CHAMFERED 20 mm UNLESS NOTED OTHERWISE.
 3. FOR STANDARD JOINT DETAILS, REFER TO SHEET CS-063.



BARRIER PANEL "B3" (1 REQUIRED)
1:20

G:\CAD\175932\Drawings\Structural\Bridges\CON-CO-ROADSIDE BARRIER DETAILS 2.dwg

1

APEGM
Certificate of Authorization
Dillon Consulting Limited (MB)
No. 1789 Date: 2018/02/09

NO.	REVISIONS	DATE	BY	DATE
1	ADDENDUM #5	18/03/16	DRA	
0	ISSUED FOR TENDER	18/02/09	DRA	

DESIGNED BY	DRA	CHECKED BY	SSR
DRAWN BY	CGC/DN	APPROVED BY	MBL
HOR. SCALE	AS SHOWN	RELEASED FOR CONSTRUCTION	
VERTICAL	AS SHOWN		
DATE	2018/02/09	DATE	

ENGINEER'S SEAL
PROVINCE OF MANITOBA
D.R.C. AMORIM
Member 33215
REGISTERED PROFESSIONAL ENGINEER
CONSULTANT PROJECT NUMBER
17-5932

THE CITY OF WINNIPEG
PUBLIC WORKS DEPARTMENT
Winnipeg
FERMOR AVENUE BRIDGE OVER SEINE RIVER
BRIDGE RE-HABILITATION, PEDESTRIAN-CYCLIST UNDERPASS STRUCTURE
AND ROADWORKS FROM ST. ANNE'S ROAD TO ARCHIBALD STREET
ROADWAY SHOULDER BARRIER
DETAILS 2 OF 2

CITY DRAWING NUMBER
U-243-2017-CS-058
SHEET 058 OF 100
CONSULTANT DRAWING NUMBER
CS-058