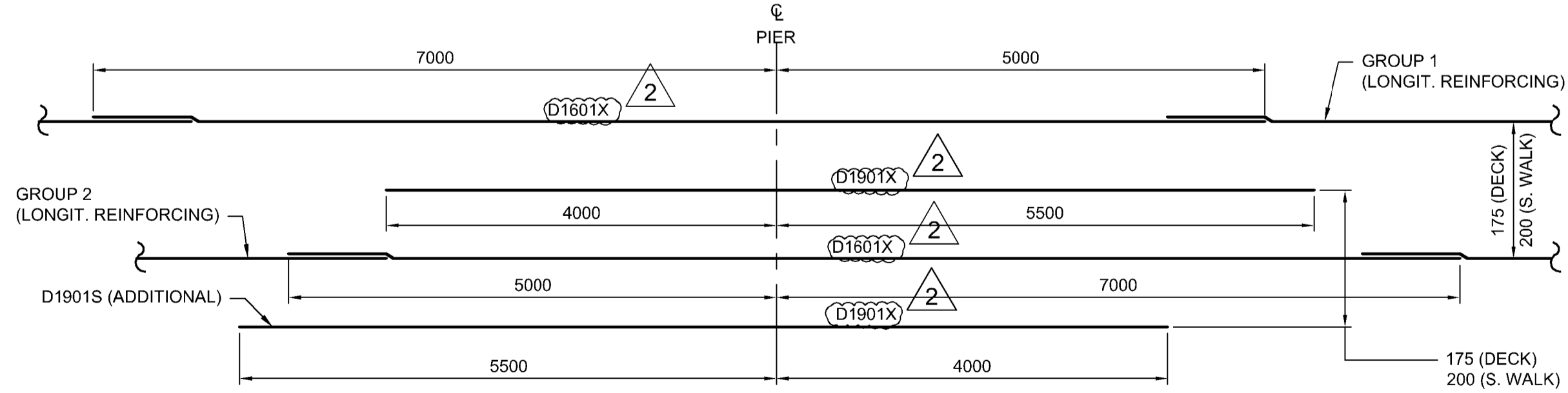


DECK SLAB REINFORCING

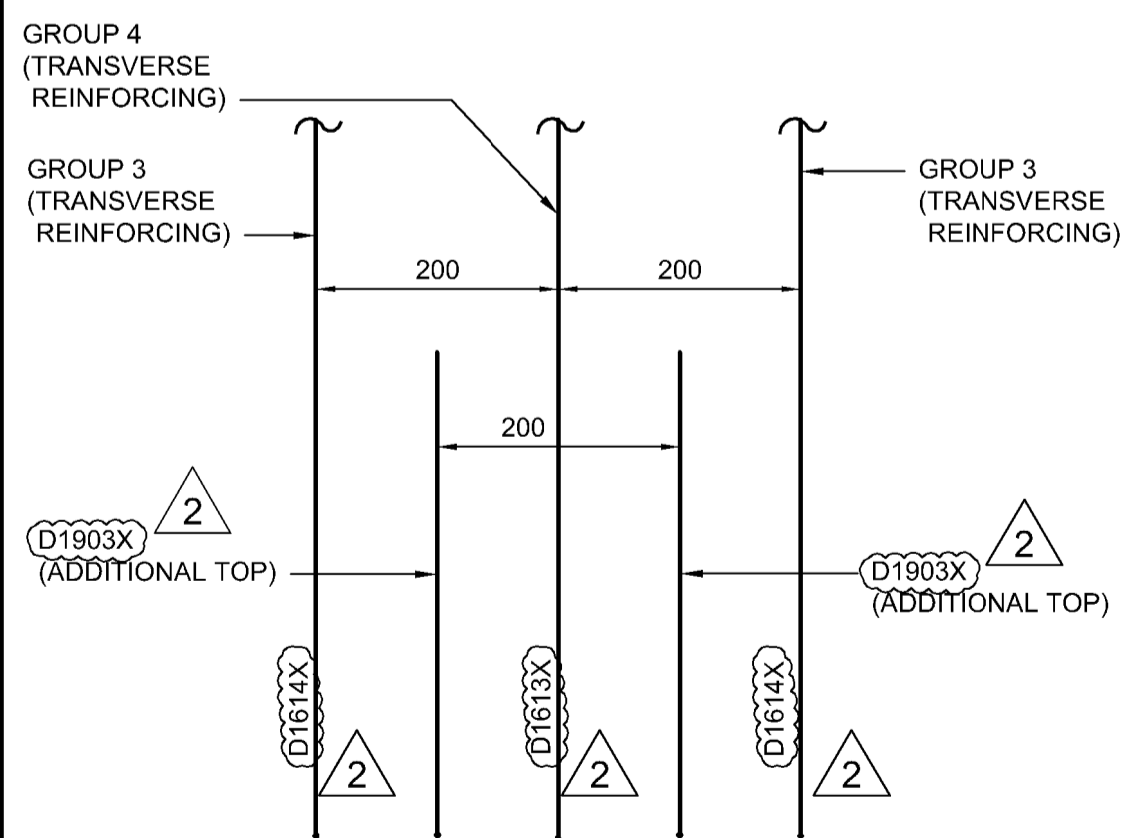
1:100

NOTE: FOR BRIDGE DECK CONCRETE SECTIONS REFER TO DETAIL 1, DETAIL 2 ON SHEET CS-035 & DETAIL 3 ON SHEET CS-034



SPACING OF ADDITIONAL REBAR AT PIER LOCATION

SPACING OF ADDITIONAL REBAR AT OVERHANG (ROADWAY SIDE)



PARTIAL PLAN REINFORCING LAYOUT

NTS

APEGM
Certificate of Authorization
Dillon Consulting Limited (MB)
No. 1789 Date: 2018/02/09

NO.	REVISIONS	DATE	BY
1	ADDENDUM #2	18/02/22	DRA
0	ISSUED FOR TENDER	18/02/09	DRA

DESIGNED BY	MS	CHECKED BY	SSR
DRAWN BY	NBG	APPROVED BY	MBL
HOR. SCALE	AS SHOWN	RELEASED FOR CONSTRUCTION	
VERTICAL	AS SHOWN	DATE	2018/02/09

ENGINEER'S SEAL
PROVINCE OF MANITOBA
D.R.C. AMORIM
Member 33215
REGISTERED PROFESSIONAL ENGINEER
CONSULTANT PROJECT NUMBER
17-5932

THE CITY OF WINNIPEG
PUBLIC WORKS DEPARTMENT
Winnipeg
FERMOR AVENUE BRIDGE OVER SEINE RIVER
BRIDGE REHABILITATION, PEDESTRIAN-CYCLIST UNDERPASS STRUCTURE AND ROADWORKS FROM ST. ANNE'S ROAD TO ARCHIBALD STREET
REHABILITATED BRIDGE DECK REINFORCING DETAILS 1 OF 2
CITY DRAWING NUMBER B-118-2017-CS-036
SHEET 036 OF 100
CONSULTANT DRAWING NUMBER CS-036

G:\CAD\175932\Drawings\Structural\BRIDGE\175932-BRIDGE-CON-CS-DECK_REINF_1.dwg