

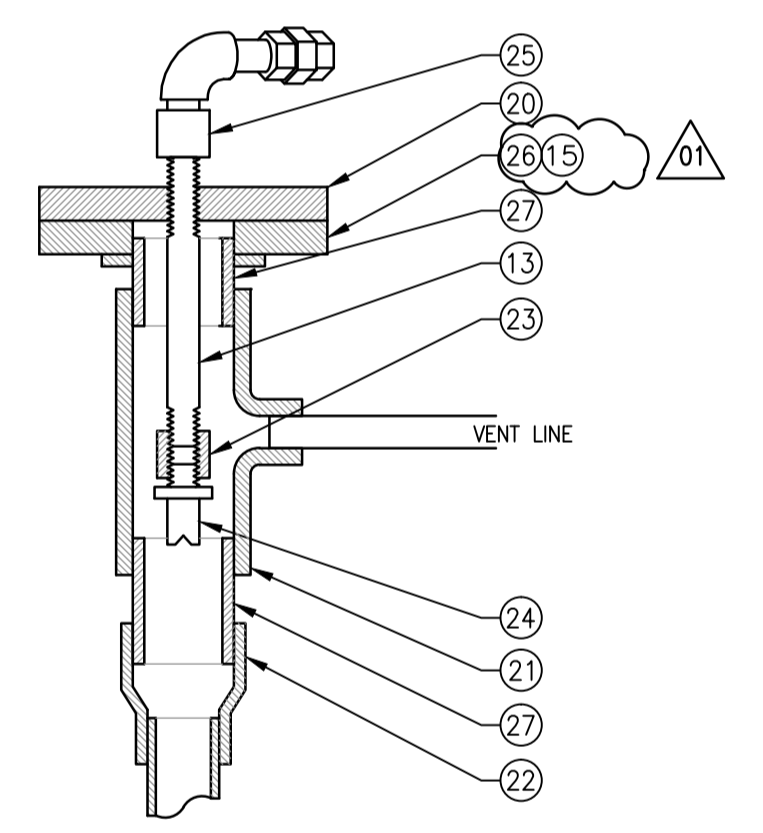
**PARTIAL PLAN VIEW - PUMP ROOM**  
 1 : 20

ITEM	DESCRIPTION	ENDS	QUANTITY
1	#50mm PVC PIPE (CUT TO SUIT)	PE	LENGTH AS REQ'D
2	#50mm LINK SEAL	-	4
3	#50mm PVC BALL VALVE	SOC	6
4	#50mm PVC CROSS	SOC	2
5	#50mm PVC FLANGE	SOC	2
6	LEVEL TRANSMITTER	FL	2
7	#50mm PVC TEE	SOC	2
8	#50mm PVC UNION	SOC	2
9	#50mm PVC CLEAR PIPE (CUT TO SUIT)	PE	LENGTH AS REQ'D
10	50x25 PVC REDUCER BUSHING	SOC	2
11	#25mm PVC BALL VALVE	SOC	4
12	#25mm PVC TEE	SOC	2
13	#12mm x 200 LONG PVC NIPPLE	TH	2
14	#50mm GASKET	-	2
15	#75mm GASKET	-	2
16	#12mm PVC PIPE (CUT TO SUIT)	PE	LENGTH AS REQ'D
17	#12mm PVC ELBOW	SOC	AS REQ'D
18	#12mm PVC UNION	SOC	2
19	#50mm S.S. PIPE (CUT TO SUIT)	TH x PE	LENGTH AS REQ'D
20	#75mm PVC BLIND FLANGE, DRILL AND TAP FOR #12mm THRD'D PIPE	-	2
21	75x75x12 PVC REDUCING TEE	SOC	2
22	75x50 PVC BELL REDUCER	SOC	2
23	#12mm PVC THRD'D COUPLING	TH	2
24	#12mm NOZZLE - INDUSTRIAL BRASS FAN TIP	TH	2
25	#12mm THRD'D x SLIP-JOINT ADAPTER	TH x SOC	2
26	#75mm PVC FLANGE	SOC	2
27	#75mm PVC PIPE (CUT TO SUIT)	PE	LENGTH AS REQ'D
28	#50mm S.S. BALL VALVE	TH	2
29	#50mm PVC PIPE (CUT TO SUIT)	TH x PE	2

- CONSTRUCTION NOTES:**
- (A) CORE THROUGH CONCRETE WALL, PROVIDE #50mm S.S. PIPE AND LINK SEALS.
  - (B) CONNECT #12mm FLUSHING WATER PIPE FROM NEW SEAL WATER SUPPLY ALONG WALL. (REFER TO DRAWING 1-0130L-M0006-001).
  - (C) SUPPORT SIGHT GLASS PIPE AS REQUIRED WITHOUT IMPEDING VISIBILITY OF LEVEL IN PIPE.
  - (D) PROVIDE #12mm PVC PIPING. (VENT PIPING). VENT BOTH SIGHT GLASS ASSEMBLIES TOGETHER. FASTEN PIPING TO WALL AT NOT MORE THAN 1.0 METRE INTERVALS. ALLOW FOR THERMAL EXPANSION/CONTRACTION OF PIPE.
  - (E) CORE THROUGH CONCRETE FLOOR. RUN VENT PIPING AGAINST WALL AND IN SUCH A MANNER THAT IT DOES NOT CAUSE OBSTRUCTIONS.
  - (F) RUN VENT PIPING AGAINST INTERIOR WALL. FASTEN PIPING TO WALL AT NOT MORE THAN 1.0 METRE INTERVALS. VENT TO OUTSIDE THROUGH EXTERIOR WALL AT HIGH LEVEL.
  - (G) PROVIDE S.S. VALVE TAGS.

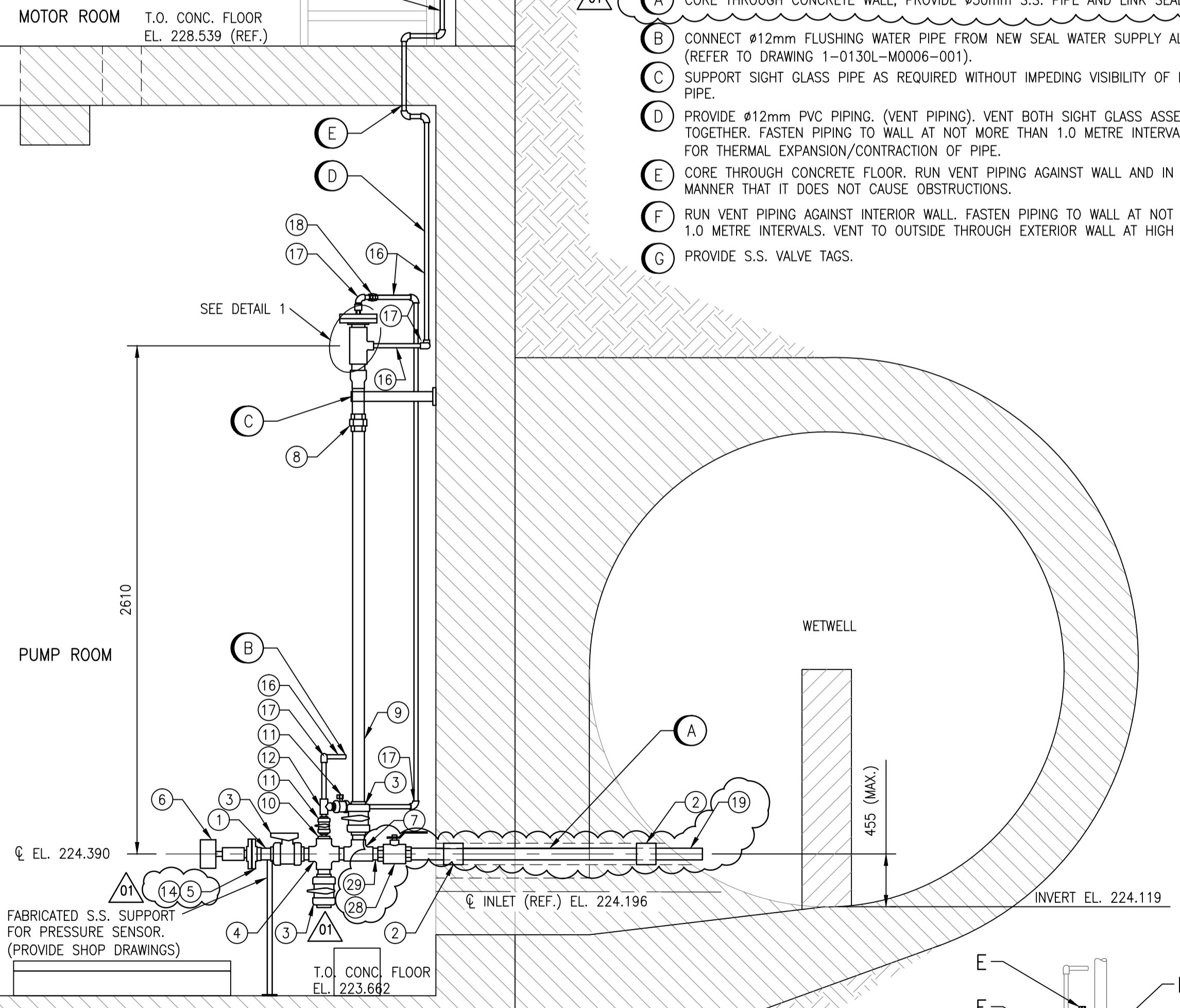
- SIGHT GLASS INSTRUCTIONS**
- Keep valve 'D' closed during normal operation to prevent fouling of sight glass. If sight glass is needed then open valve 'D'. Clean and isolate the sight glass when finished.
  - To clean and isolate the sight glass after it has been used:
    - Keep valve 'D' open.
    - Close valve 'C' to isolate from wetwell.
    - Open valve 'B' to drain water from sight glass.
    - Close valve 'A' to isolate level transmitter.
    - Open valve 'E' to clean the sight glass.
    - When cleaning is complete, close valves 'E', 'D', and 'B'. Then open valves 'A' and 'C'.
  - To purge sludge from piping back into the wetwell:
    - Keep valve 'C' open.
    - Close valve 'A' to isolate level transmitter.
    - Open valve 'F' to purge sludge back into the wetwell.
    - When purging is complete, close valve 'F' then open valve 'A'.
  - To drain system:
    - Close valve 'C'.
    - Open valve 'B'.
    - When draining is complete, close valve 'B' then open valve 'C'.

**GENERAL NOTES:**  
 1. ALL LENGTHS & DIMENSIONS SHOWN ARE TO BE FIELD CONFIRMED BY CONTRACTOR.

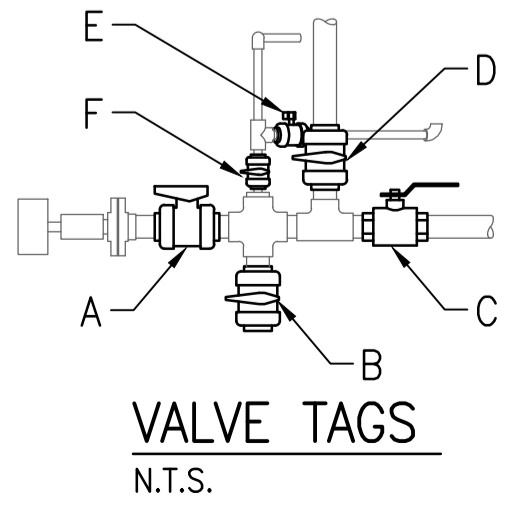


**DETAIL 1**  
 1 : 5

TYP. OF 1.  
 FASTEN TO WALL SO THAT LAMACOID IS VISIBLE TO OPERATORS.



**SECTION 1**  
 1 : 20



**APECM**  
 Certificate of Authorization  
**SNC-Lavalin Inc.**  
 No. 4489

1 : 20

**LAMACOID DETAIL**  
 1 : 1

NO.	REVISIONS	DATE	DESIGN	CHECK
01	ADDENDUM #2 - REVISE MATERIALS LIST	2017-08-09	FZ	BJC
00	ISSUED FOR TENDER, BID OPP. 639-2017	2017-07-25	FZ	BJC

**SNC-LAVALIN INC.**  
 148 Nature Park Way  
 Winnipeg, MB, Canada R3P 0X7  
 204-786-8080

DESIGNED BY: F. ZURZOLO  
 DRAWN BY: D. CALVERLEY  
 SCALE: 1 : 20  
 DATE: 2017/05/26

CHECKED BY: B. CLEVEN  
 APPROVED BY: B. CLEVEN  
 ISSUED FOR CONSTRUCTION  
 DATE:

ENGINEER'S SEAL  
**PRELIMINARY**  
 NOT TO BE  
 USED FOR  
 CONSTRUCTION

**THE CITY OF WINNIPEG**  
 WATER AND WASTE DEPARTMENT

COMMUNITY ROW WASTEWATER PUMPING STATION  
 2017 UPGRADES  
 DETAILS  
 WETWELL SIGHT GLASS

CITY DRAWING NUMBER: 1-0130L-M0008  
 SHEET: 001  
 REV: 01  
 SIZE: A1