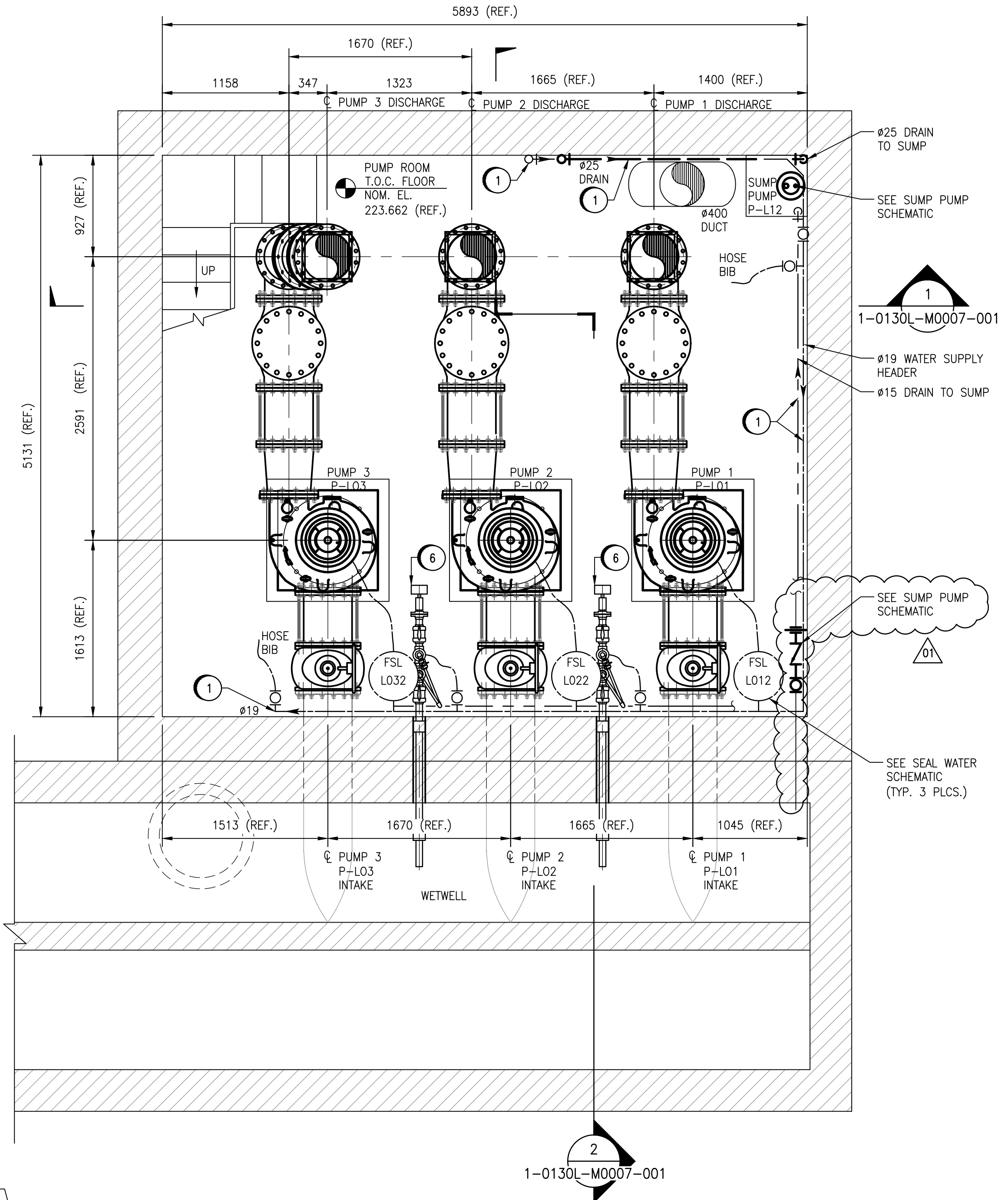
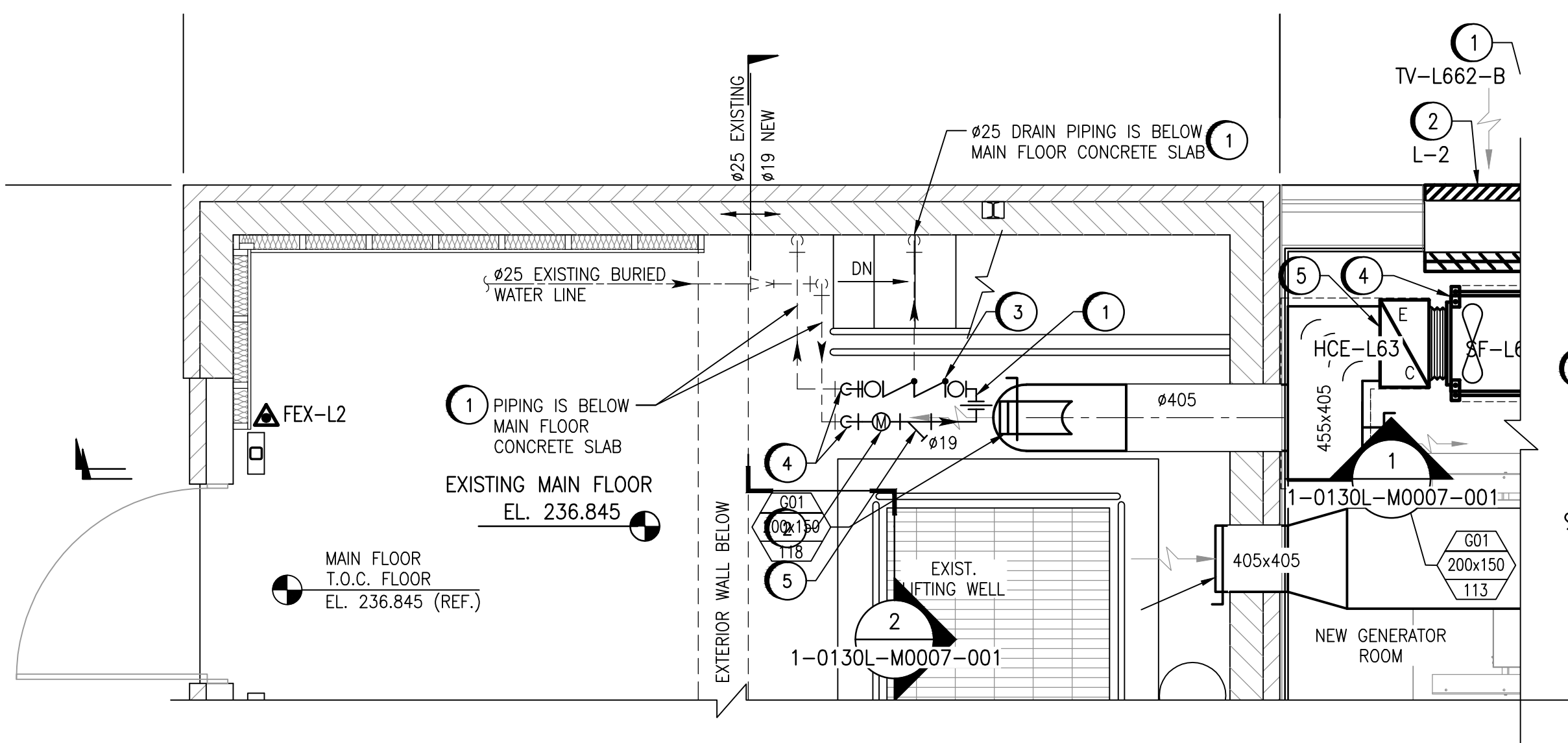


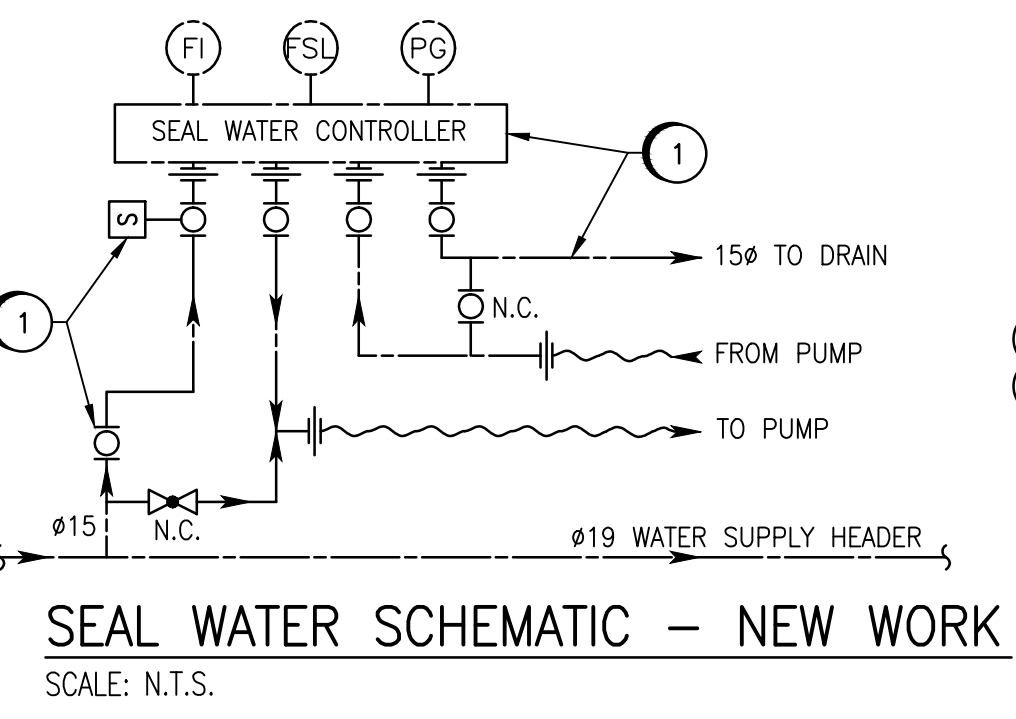
MOTOR ROOM FLOOR PLAN - NEW WORK
SCALE: 1 : 30



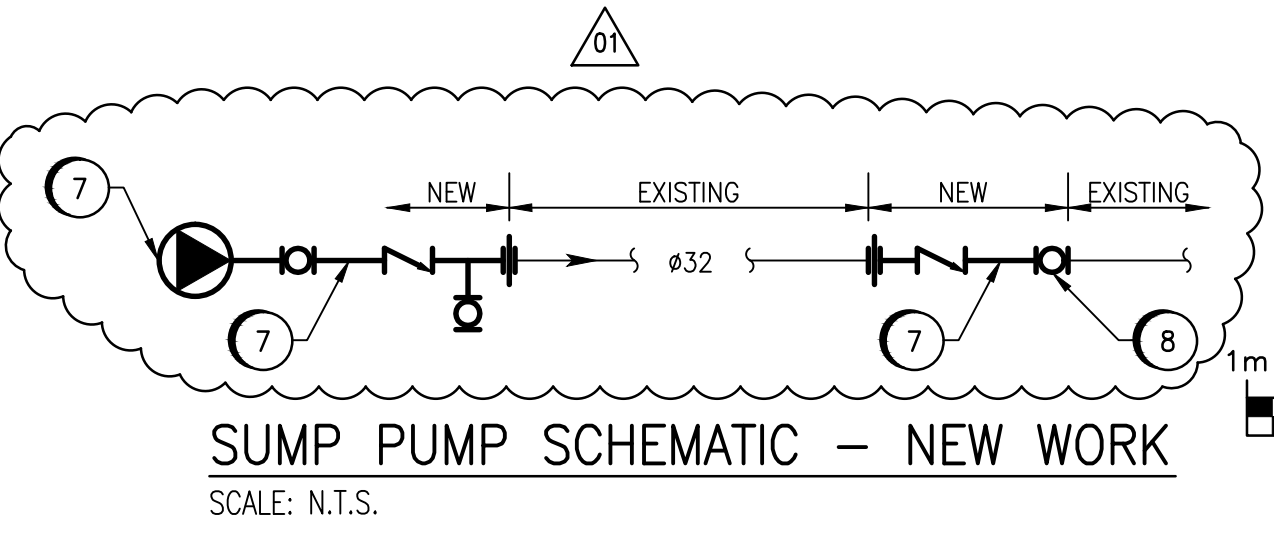
PUMP ROOM FLOOR PLAN - NEW WORK
SCALE: 1 : 30



PARTIAL MAIN FLOOR PLAN - NEW WORK
SCALE: 1 : 30



SEAL WATER SCHEMATIC - NEW WORK
SCALE: N.T.S.



SUMP PUMP SCHEMATIC - NEW WORK
SCALE: N.T.S.

GENERAL NOTES:

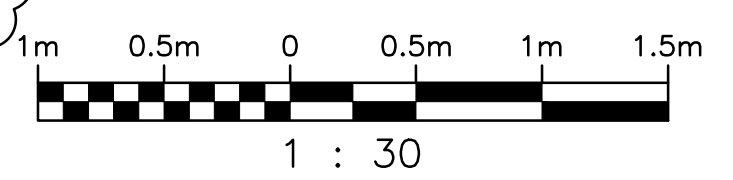
1. ALL LENGTHS & DIMENSIONS SHOWN ARE TO BE FIELD CONFIRMED BY CONTRACTOR.
2. COORDINATE WITH DIVISION 26 WHERE EQUIPMENT THAT REQUIRES NEW ELECTRICAL IS TO BE INSTALLED.
3. ALL BUILDING MODIFICATIONS REQUIRED FOR THE INSTALLATION OF MECHANICAL EQUIPMENT ARE PART OF THE CONTRACTORS SCOPE OF WORK.
4. ALL PIPE, FITTINGS, FLANGES & SUPPORTS TO BE PAINTED AS PART OF THE CONTRACTORS SCOPE OF WORK.

NEW WORK NOTES:

1. NEW COPPER PIPING, VALVES, INSTRUMENTS, FITTINGS, HOSES & SUPPORTS TO BE SUPPLIED AND INSTALLED BY CONTRACTOR. PUMP SEAL WATER SOLENOID VALVES TO BE SUPPLIED BY OTHERS AND INSTALLED BY THE CONTRACTOR.
2. NEW WATER METER TO BE SUPPLIED BY OTHERS AND INSTALLED BY CONTRACTOR.
3. NEW REDUCED PRESSURE ZONE ASSEMBLY C/W AIR GAP DRAIN CUP, DRAIN PIPING, FITTINGS & SUPPORTS TO BE SUPPLIED AND INSTALLED BY CONTRACTOR.
4. CONTRACTOR TO CORE DRILL HOLE FOR PIPING. CONTRACTOR IS RESPONSIBLE TO CONDUCT NON-DESTRUCTIVE TEST (NDT) TO IDENTIFY REBAR LOCATIONS. CONTRACT ADMINISTRATOR TO BE CONTACTED/INFORMED OF REBAR LOCATIONS. CORE DRILLING SHALL NOT PROCEED UNTIL CONTRACT ADMINISTRATOR APPROVES.
5. NEW STRAINER TO BE SUPPLIED BY AND INSTALLED BY CONTRACTOR.
6. SUMP LEVEL TRANSMITTER AND SIGHT GLASS. FOR DETAILS SEE DWG. 1-0130L-M0008-001.
7. NEW SUMP PUMP, PVC PIPING, PVC VALVES & PVC FITTINGS TO BE SUPPLIED AND INSTALLED BY CONTRACTOR.
8. NEW STAINLESS STEEL BALL VALVE TO BE SUPPLIED AND INSTALLED BY CONTRACTOR.

LEGEND:

- CHECK VALVE
- GLOBE VALVE
- BALL VALVE
- STRAINER
- UNION
- METER
- SOLENOID VALVE
- LOW FLOW SWITCH
- TUBING
- REDUCED PRESSURE ZONE ASSEMBLY
- FLOW INDICATOR
- PRESSURE GAUGE
- PUMP



NO.	REVISIONS	DATE	DESIGN	CHECK
01	ADDENDUM #2 - REVISE SUMP SCHEMATIC	2017-08-09	FZ	BJC
00	ISSUED FOR TENDER, BID OPP. 639-2017	2017-07-25	FZ	BJC

		SNC-LAVALIN INC. 148 Nature Park Way Winnipeg, MB, Canada R3P 0X7 204-786-8080	
DESIGNED BY:	F. ZURZOLO	CHECKED BY:	B. CLEVEN
DRAWN BY:	C. FETTERLY	APPROVED BY:	B. CLEVEN
SCALE:	1 : 30	ISSUED FOR CONSTRUCTION BY:	
DATE:	2017/04/21	DATE:	
CONSULTANT NO.:			

ENGINEER'S SEAL
PRELIMINARY
NOT TO BE
USED FOR
CONSTRUCTION

THE CITY OF WINNIPEG
WATER AND WASTE DEPARTMENT

COMMUNITY ROW WASTEWATER PUMPING STATION
2017 UPGRADES
PLAN
MECHANICAL - UTILITIES
MAIN FLOOR, MOTOR ROOM & PUMP ROOM - NEW WORK

CITY DRAWING NUMBER: 1-0130L-M0006
SHEET: 001
REV.: 01
SIZE: A1