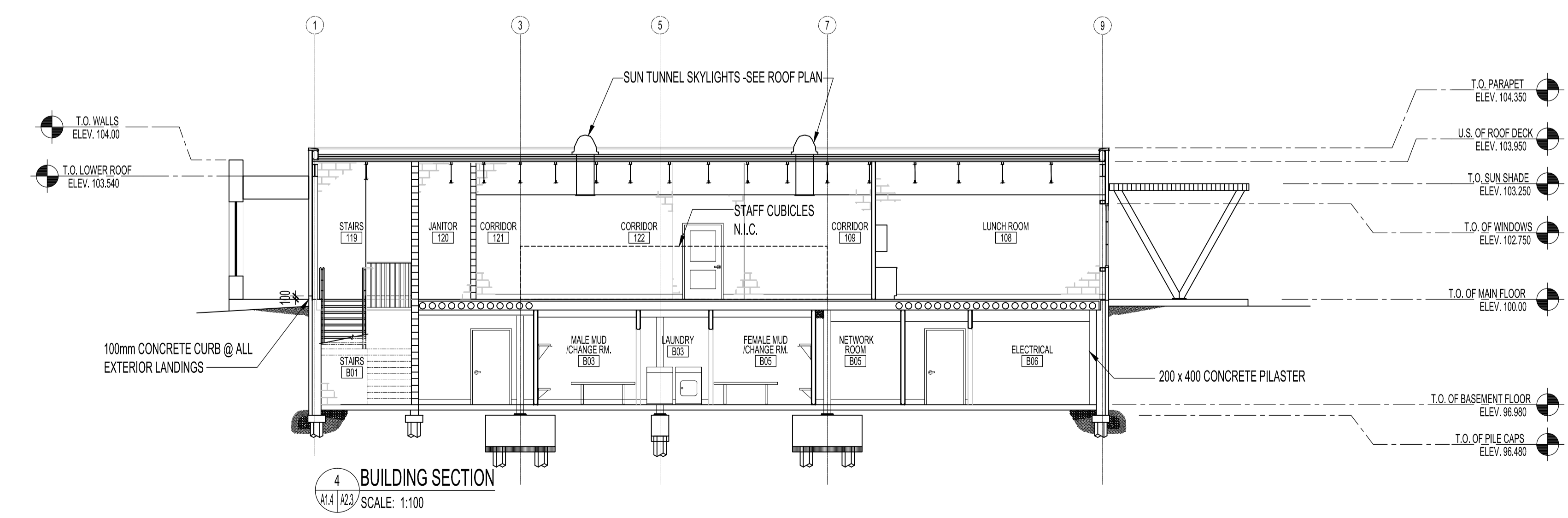
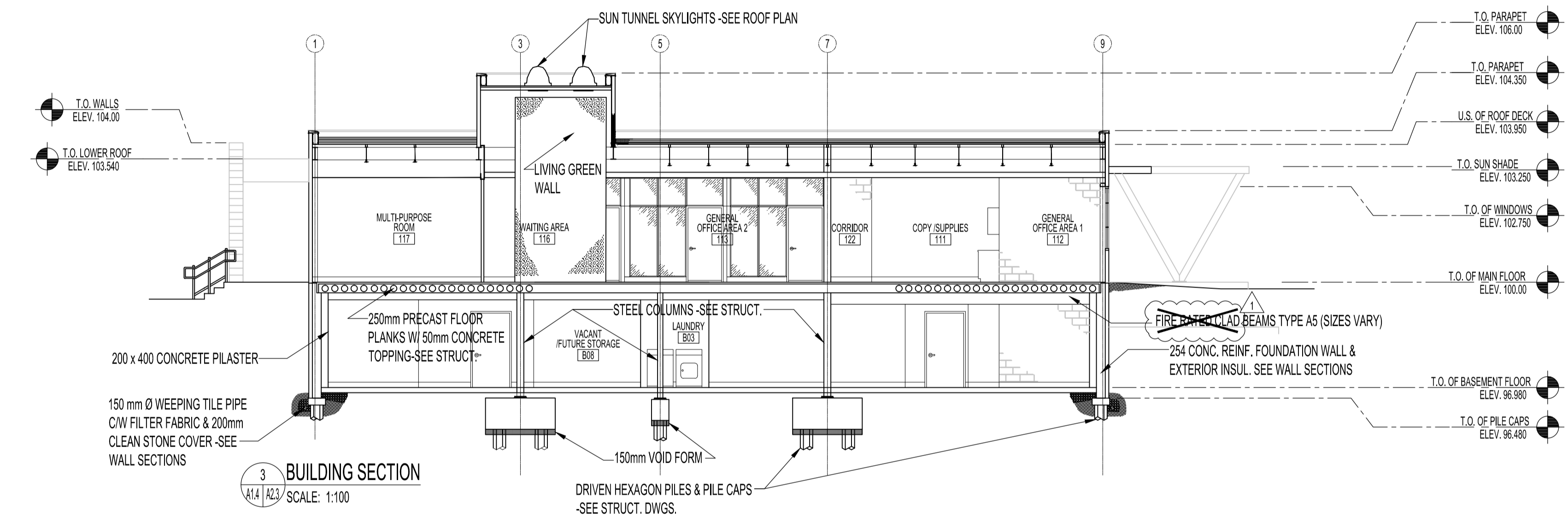


- NOTES:**
- TYPICAL ROOF CONSTRUCTION**
- 2 PLY MODIFIED BITUMEN ROOF MEMBRANE SYSTEM -TORCH ON
  - 1 LAYER 6mm OVERLAY BOARD ADHERED.
  - 100mm POLY ISOCYANURATE INSULATION R24 ADHERED.
  - TAPERED EPS INSULATION MG. R26 ADHERED.
  - SBS AIR VAPOUR RETARD -TORCH ON.
  - 16mm TYPE 'X' GYPSUM BOARD FASTENED
  - STEEL DECKING
  - AREAS OF OPEN WEB STEEL JOISTS IN VARYING SIZES AND BEAMS IN VARYING SIZES. UPPER ROOF AREA HAS NO STEEL WEB JOISTS. SEE STRUCT.
  - SUSPENDED ACOUSTIC CEILING TILE SYSTEM OR AREAS WITH OPEN CONCEPT. SEE REFLECTED CEILING PLAN.



No.	REVISION/DESCRIPTION	BY	DATE
1	ISSUED FOR ADDENDUM #2	JAW	JUNE 15, 2017
0	ISSUED FOR CONSTRUCTION	MMK	MAR 17, 2017

SEAL

ORIGINAL STAMPED BY: R. LI  
DATE: MARCH 20, 2017

DRAWN	CHECKED	DESIGNED	APPROVED
MMK			
DATE: 2016.08.30	USER APPROVAL		

**Winnipeg** THE CITY OF WINNIPEG  
PLANNING, PROPERTY AND DEVELOPMENT DEPARTMENT  
MUNICIPAL ACCOMMODATIONS DIVISION  
3-65 GARRY STREET, R3C 4K4

PROJECT  
BRADY ROAD LANDFILL  
ADMINISTRATION BUILDING  
DEVELOPMENT FOR BRADY LANDFILL  
1901 BRADY ROAD

SHEET TITLE  
BUILDING SECTIONS

SCALE	PROJECT No:	SHEET No:
AS SHOWN	2015-037	A2.3-R1

DRAWING SHEET SIZE: A1 (841mm x 594mm) PLOT 1:1