

- REFERENCE NOTES**
- PAVEMENT DIMENSIONS ARE TO BACK OF CURB
 - BASELINE IS CENTRE LINE RIGHT-OF-WAY
 - PROPERTY LINES OBTAINED FROM CITY OF WINNIPEG L.B.I.S., AND NO SCALE FACTOR WAS APPLIED
 - REFER TO AECOM FIELDBOOK NO. 4974

- CONSTRUCTION NOTES**
- PLANE EXISTING ASPHALT AND CONSTRUCT NEW ASPHALTIC PAVEMENT TYPE 1A (AVG THICKNESS 85mm)
 - REMOVE EXISTING CONCRETE PAVEMENT AND CONSTRUCT NEW 200mm REINFORCED CONCRETE PAVEMENT c/w ASPHALT OVERLAY
 - REMOVE EXISTING CONCRETE PAVEMENT AND CONSTRUCT NEW 150mm REINFORCED CONCRETE PAVEMENT
 - CONSTRUCT NEW BARRIER CURB (150mm REVEAL HT. SEPERATE)
 - CONSTRUCT NEW CURB RAMP (10mm REVEAL HT. INTEGRAL)
 - CONSTRUCT NEW CURB RAMP (10mm REVEAL HT. MONOLITHIC)
 - CONSTRUCT NEW MODIFIED BARRIER CURB (150mm REVEAL HT. INTEGRAL)
 - RENEW EXISTING CONCRETE BARRIER CURB (150mm REVEAL HT. DOWELLED)
 - RENEW EXISTING CONCRETE BARRIER CURB (150mm REVEAL HT. DOWELLED)
 - INSTALL NEW CURB AND GUTTER INLET c/w CATCHPIT (SD-023) AND CONNECT TO EXISTING CATCHBASIN.
 - INSTALL NEW CURB AND GUTTER INLET c/w CATCHBASIN (SD-024) AND CONNECT TO EXISTING LEAD.
 - REMOVE EXISTING CATCHBASIN
 - REMOVE EXISTING DRAINAGE INLET
 - ADJUST EXISTING MANHOLE/CATCH BASIN TO GRADE
 - REMOVE EXISTING FRAME AND COVER AND INSTALL NEW FRAME AND SOLID COVER (AP-006 AND AP-007)
 - INSTALL NEW CAST IRON RISER RING
 - RENEW EXISTING 100mm CONCRETE SIDEWALK
 - CONSTRUCT NEW 100 mm CONCRETE SIDEWALK
 - INSTALL NEW DETECTABLE WARNING SURFACE TILES
 - REMOVAL OF CONCRETE SIDEWALK
 - ADJUST EXISTING WATER VALVE TO GRADE



METRIC
WHOLE NUMBERS INDICATE MILLIMETRES
DECIMALIZED NUMBERS INDICATE METRES

150 mm W.W.		300mm L.D.S.		250mm W.W.S.		150 mm W.W.		300mm L.D.S.		250mm W.W.S.	
WATERMAIN	150 mm W.W.	LAND DRAINAGE SEWER	300mm L.D.S.	WASTEWATER SEWER	250mm W.W.S.	HYDRO	150 mm W.W.	M.T.S.	300mm L.D.S.	CONCRETE	250mm W.W.S.
HYDRANT	150 mm W.W.	VALVE	300mm L.D.S.	MANHOLE	250mm W.W.S.	CATCH BASIN	150 mm W.W.	CATCH PIT	300mm L.D.S.	JUNCTIONS	150 mm W.W.
CULVERT	150 mm W.W.	GAS	300mm L.D.S.	EXISTING	250mm W.W.S.	PROPOSED	150 mm W.W.	EXISTING	300mm L.D.S.	PROPOSED	150 mm W.W.

LOCATION APPROVED UNDERGROUND STRUCTURES

SYMBOL	DESCRIPTION	DATE
---	SUPV. U/G STRUCTURES COMMITTEE	

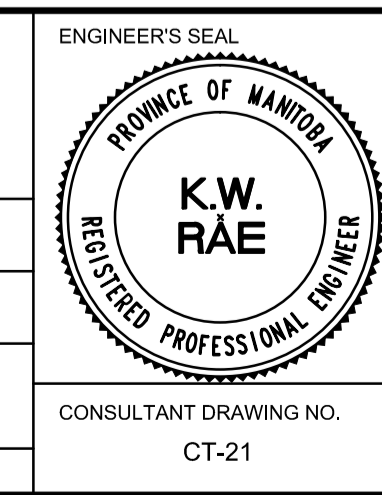
NOTE:
LOCATION OF UNDERGROUND STRUCTURES AS SHOWN ARE BASED ON THE BEST INFORMATION AVAILABLE, BUT NO GUARANTEE IS GIVEN THAT ALL EXISTING UTILITIES ARE SHOWN OR THAT THE GIVEN LOCATIONS ARE EXACT. CONFIRMATION OF EXISTENCE AND EXACT LOCATION OF ALL SERVICES MUST BE OBTAINED FROM THE INDIVIDUAL UTILITIES BEFORE PROCEEDING WITH CONSTRUCTION.

B.M. 32-055 84R761 - N. side Fermor Ave. & Speers Rd., Tbt. on top of 0.05 m dia. x 2.4 m iron pipe, 9.1 m S. of N.E. of Fermor Ave. & 8.2 m W. of E.L. of Speers Rd.

NO.	REVISIONS	DATE	BY
1	MISCELLANEOUS REVISIONS	05/15/17	BC
0	ISSUED FOR TENDER	05/10/17	BC
A	ISSUED FOR REVIEW	05/01/17	BC

AECOM

DESIGNED BY: BC
CHECKED BY: TDW
DRAWN BY: PB
APPROVED BY:
HOR. SCALE: 1:250
VERTICAL: 1:10
RELEASED FOR CONSTRUCTION BY:
DATE:



THE CITY OF WINNIPEG
PUBLIC WORKS DEPARTMENT
ENGINEERING DIVISION

2017 LOCAL STREET RENEWAL PROGRAM

DRAKE BLVD - AUTUMNWOOD TO ELIZABETH
PAVEMENT REHABILITATION
STATION 0+490 TO ELIZABETH ROAD

CITY DRAWING NUMBER: SHEET 21 OF 27