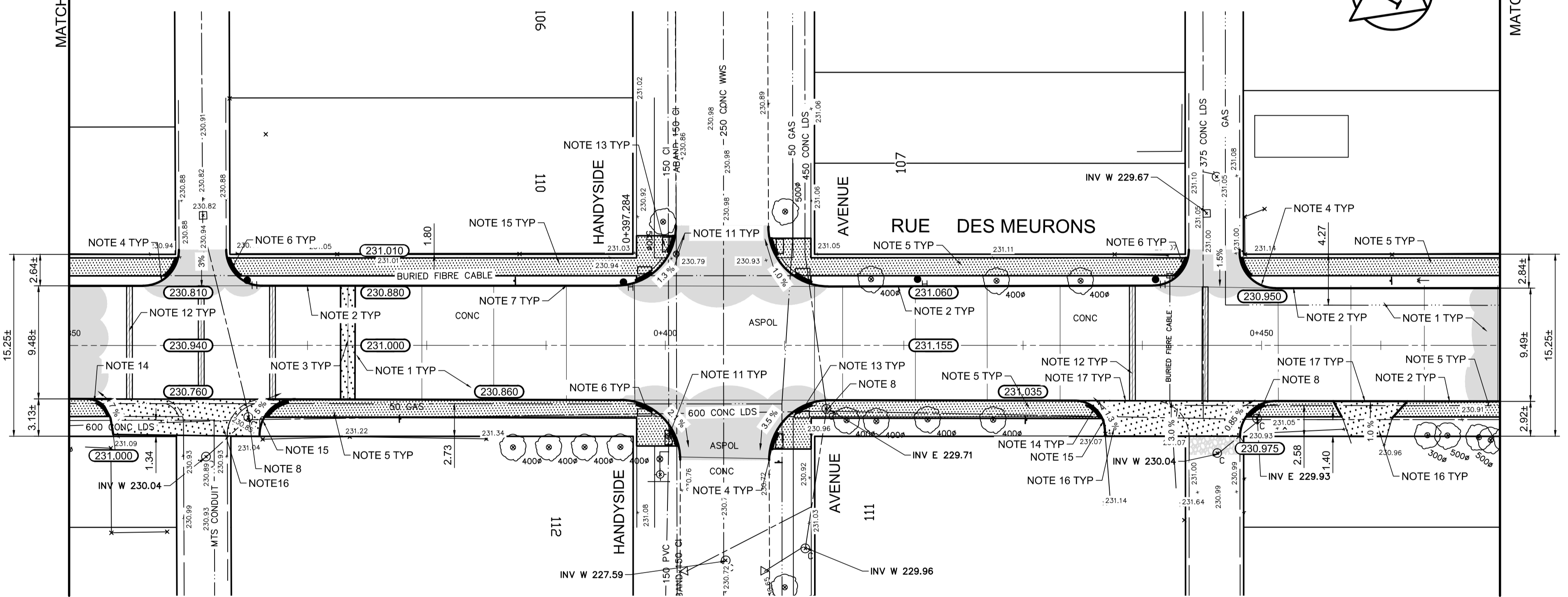


REFERENCE NOTES

- A. PAVEMENT DIMENSIONS ARE TO BACK OF CURB
- B. BASELINE IS CENTRE LINE RIGHT-OF-WAY
- C. PROPERTY LINES OBTAINED FROM CITY OF WINNIPEG L.B.I.S., AND NO SCALE FACTOR WAS APPLIED
- D. REFER TO AECOM FIELD BOOK NO. 4977

CONSTRUCTION NOTES

1. PLACE NEW ASPHALTIC PAVEMENT TYPE 1A (AVG THICKNESS 85mm)
2. RENEW EXISTING BARRIER CURB (100mm REVEAL HT. DOWELED)
3. REMOVE EXISTING CONCRETE PAVEMENT AND CONSTRUCT NEW 150mm REINFORCED CONCRETE PAVEMENT c/w ASPHALTIC OVERLAY
4. REMOVE EXISTING BARRIER CURB AND CONSTRUCT NEW CONCRETE MODIFIED BARRIER CURB (150mm REVEAL HT. DOWELED)
5. RENEW EXISTING 100mm CONCRETE SIDEWALK
6. CONSTRUCT CURB RAMP (10mm REVEAL HT. MONOLITHIC)
7. CONSTRUCT NEW CONCRETE BARRIER CURB (100mm REVEAL HT. SEPARATE)
8. ADJUST EXISTING MANHOLE/CATCHBASIN TO GRADE
9. REMOVE EXISTING FRAME AND COVER AND INSTALL NEW FRAME AND SOLID COVER (AP-006 & AP-007)
10. INSTALL NEW CAST IRON RISER RING
11. ADJUST EXISTING WATER VALVE TO GRADE
12. PARTIAL DEPTH PLANING OF EXISTING JOINTS AND ASPHALT PATCHING OF EXISTING JOINTS USING TYPE 1A
13. INSTALL NEW DETECTABLE WARNING SURFACE TILES
14. CONSTRUCT CURB RAMP (10mm REVEAL HT. INTEGRAL)
15. CONSTRUCT NEW CONCRETE MODIFIED BARRIER CURB (150mm REVEAL HT. INTEGRAL)
16. REMOVE EXISTING CONCRETE PAVEMENT AND CONSTRUCT NEW 150mm REINFORCED CONCRETE PAVEMENT
17. CONSTRUCT NEW CONCRETE LIP CURB (40mm REVEAL HT INTEGRAL)



METRIC
WHOLE NUMBERS INDICATE MILLIMETRES
DECIMALIZED NUMBERS INDICATE METRES

150 mm W.M.		300mm L.D.S.		250mm W.W.S.		150 mm W.M.		300mm L.D.S.		250mm W.W.S.	
◇	WATERMAIN	◇	HYDRANT	◇	VALVE	◇	HYDRO	◇	M.T.S.	◇	CONCRETE
◇	LAND DRAINAGE SEWER	◇	WASTEWATER SEWER	◇	MANHOLE	◇	PROPERTY LINE	◇	ASPHALT	◇	CONCRETE SIDEWALK
◇	CATCH BASIN	◇	CATCH PIT	◇	JUNCTIONS	◇	CULVERT	◇	GAS	◇	FENCE
◇	EXISTING	◇	LEGEND - PLAN	◇	PROPOSED	◇	EXISTING	◇	LEGEND - PLAN	◇	PROPOSED

LOCATION APPROVED UNDERGROUND STRUCTURES

SUPV. U/G STRUCTURES COMMITTEE DATE

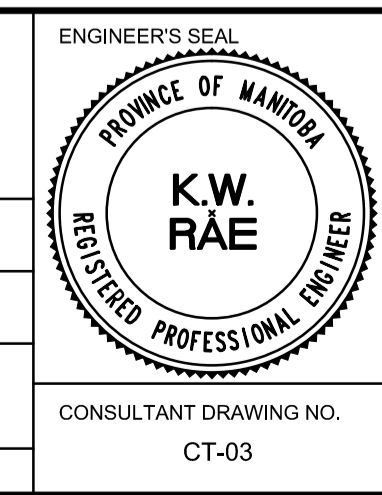
NOTE:
LOCATION OF UNDERGROUND STRUCTURES AS SHOWN ARE BASED ON THE BEST INFORMATION AVAILABLE. BUT NO GUARANTEE IS GIVEN THAT ALL EXISTING UTILITIES ARE SHOWN OR THAT THE GIVEN LOCATIONS ARE EXACT. CONFIRMATION OF EXISTENCE AND EXACT LOCATION OF ALL SERVICES MUST BE OBTAINED FROM THE INDIVIDUAL UTILITIES BEFORE PROCEEDING WITH CONSTRUCTION.

B.M. 52-054 85R410 S.W. Cor. Des Meurons & Vivian Ave., 10m on top of 0.05 m dia. x 2.4 m iron pipe, beneath ELEV.231.032 Valve Box, 1.8 m E. of W.L. of Rue Des Meurons & on S.L. of Vivian

NO.	REVISIONS	DATE	BY
1	MISCELLANEOUS REVISIONS	05/15/17	BC
0	ISSUED FOR TENDER	05/10/17	BC
A	ISSUED FOR REVIEW	05/01/17	BC

AECOM

DESIGNED BY: JT
CHECKED BY: TDW/BC
DRAWN BY: BC/PB
APPROVED BY:
HOR. SCALE: 1:250
VERTICAL: 1:10
RELEASED FOR CONSTRUCTION BY:
DATE: DATE



THE CITY OF WINNIPEG
PUBLIC WORKS DEPARTMENT
ENGINEERING DIVISION

2017 LOCAL STREET RENEWAL PROGRAM

RUE DES MEURONS - REGAL AVENUE / VIVIAN AVENUE
PAVEMENT REHABILITATION
STATION 0+350 TO STATION 0+470

CITY DRAWING NUMBER
SHEET 03 OF 27

CONSULTANT DRAWING NO. CT-03