

NOTES

- ADJUST MH AND CB RIMS TO NEW GRADES.
- CONTRACTOR TO REGRADE/RENEW EXISTING PRIVATE SIDEWALKS TO LIMITS AS SHOWN. SIDEWALKS TO BE RENEWED WITH CONCRETE UNLESS NOTED OTHERWISE.
- CONTRACTOR TO TAKE PRECAUTIONARY STEPS TO PROTECT EXISTING TREES WITHIN THE LIMITS OF CONSTRUCTION FROM DAMAGE FROM CONSTRUCTION ACTIVITIES AS OUTLINED IN THE SPECIFICATIONS.
- MODIFIED BARRIER CURB TO BE CONSTRUCTED AT ALL INTERSECTION RADII, BACK LANE RADII AND BULLNOSES.
- CONTRACTOR TO CONFIRM THE LOCATION OF ALL UTILITIES/SERVICES IN THE FIELD PRIOR TO CONSTRUCTION.
- ADD 200.000m TO ABBREVIATED ELEVATIONS TO OBTAIN GEODETIC ELEVATIONS.
- CB SD-024 OFFSETS ARE DIMENSIONED TO BOC. CB SD-025 OFFSETS ARE DIMENSIONED O.C.
- ALL DIMENSIONS TO BACK OF CURB.

ENGINEERS GEOSCIENTISTS MANITOBA
Certificate of Authorization
MORRISON HERSHFIELD
No. 1736

BID OPPORTUNITY No. 300-2017

METRIC
WHOLE NUMBERS INDICATE MILLIMETRES
DECIMALIZED NUMBERS INDICATE METRES

---	GAS	○	MANHOLE	●	CONCRETE PAVEMENT
---	MTS / PEDESTAL	□	CATCH BASIN / CATCH PIT	■	CONC SIDEWALK / MEDIAN
---	HYDRO / CABINET	△	CURB INLET WITH BOX	▲	ASPHALT PAVEMENT
---	CATV / FIBRE OPTIC	○	TREE	●	PAVING STONE
---	TRAFFIC SIGNALS / PIT	⊕	TEST HOLE	⊕	GRAVEL
---	LAND DRAINAGE SEWER	⊕	PROPERTY LINE	---	RAMP CURB
---	SANITARY/COMBINED SEWER	⊕	SURVEY BAR	---	PLANING / REMOVAL
---	CB LEAD / SSP / DCP	---	FENCE	---	
---	WATER MAIN	---	BOC / EDGE OF PAVEMENT	---	
---	SUBDRAIN	---	ELEVATION	(33.333)	
---	DITCH	---	TRAFFIC SIGN	---	
---	EXISTING	---	LEGEND - PLAN	---	
---	NEW	---	LEGEND - PLAN	---	

LOCATION APPROVED UNDERGROUND STRUCTURES

DATE: _____

NOTE: LOCATION OF UNDERGROUND STRUCTURES AS SHOWN ARE BASED ON THE BEST INFORMATION AVAILABLE BUT NO GUARANTEE IS GIVEN THAT ALL EXISTING UTILITIES ARE SHOWN OR THAT THE GIVEN LOCATIONS ARE EXACT. CONFIRMATION OF EXISTENCE AND EXACT LOCATION OF ALL SERVICES MUST BE OBTAINED FROM THE INDIVIDUAL UTILITIES BEFORE PROCEEDING WITH CONSTRUCTION.

---	CONCRETE PAVEMENT	---	NEW
---	CONC SIDEWALK / MEDIAN	---	NEW
---	ASPHALT PAVEMENT	---	NEW
---	PAVING STONE	---	NEW
---	GRAVEL	---	NEW
---	RAMP CURB	---	NEW
---	PLANING / REMOVAL	---	NEW

PLAN
SCALE: 1:250

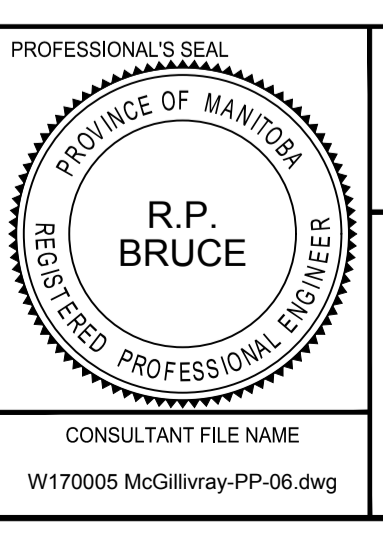
0 5 10 15m

BM 65-024
ELEV 232.001 m

8. Side McGillivray Blvd., W. of Vincent St., in Manitoba Hydro transmission line, 10m to 7.8 m Curb; and 27.9 m W. of Vincent St., & 1.5 m S. of N. Curb line of McGillivray Pk., produced from the E.

MORRISON HERSHFIELD

DESIGNED BY	WRJ	CHECKED BY	RPB
DRAWN BY	DID, DML	APPROVED BY	BWB
DATE	17/06/09	RELEASED FOR CONSTRUCTION	DATE



THE CITY OF WINNIPEG
PUBLIC WORKS DEPARTMENT
ENGINEERING DIVISION

2017 REGIONAL AND LOCAL STREET RENEWAL PROGRAM
McGILLIVRAY BOULEVARD REHABILITATION
WAVERLEY STREET TO PEMBINA HIGHWAY
HORIZONTAL AND VERTICAL ALIGNMENT
STA 0+800 TO STA 0+930

CITY DRAWING NUMBER P-3482-7
SHEET 7 OF 30
DRAWING No. REV 7 C