

REFERENCE NOTES

- A. PAVEMENT DIMENSIONS ARE TO BACK OF CURB
- B. BASELINE IS CENTRE LINE RIGHT-OF-WAY
- C. PROPERTY LINES OBTAINED FROM CITY OF WINNIPEG L.B.I.S., AND NO SCALE FACTOR WAS APPLIED
- D. REFER TO AECOM FIELD BOOK NO. 4982

CONSTRUCTION NOTES

1. REMOVE EXISTING ASPHALTIC PAVEMENT AND CONSTRUCT NEW ASPHALTIC PAVEMENT TYPE 1A (100mm)
2. REMOVE EXISTING CONCRETE/ASPHALT PAVEMENT AND CONSTRUCT NEW 150mm REINFORCED CONCRETE PAVEMENT c/w ASPHALTIC OVERLAY TYPE 1A (50mm)
3. REMOVE EXISTING CONCRETE/ASPHALT PAVEMENT AND CONSTRUCT NEW 200mm REINFORCED CONCRETE PAVEMENT c/w ASPHALTIC OVERLAY TYPE 1A (50mm)
4. ADJUST EXISTING MANHOLE/CATCHBASIN TO GRADE
5. REMOVE EXISTING FRAME AND COVER AND INSTALL NEW FRAME AND SOLID COVER (AP-006 AND AP-007)
6. INSTALL NEW CAST IRON RISER RING
7. ADJUST EXISTING WATER VALVE TO GRADE
8. RENEW EXISTING 100mm CONCRETE SIDEWALK
9. INSTALL NEW 150mm SUB DRAIN 0.225m BEHIND ROADWAY AND TIE INTO EXISTING CATCHBASIN
10. CONSTRUCT NEW CURB RAMP (10mm REVEAL HT. INTEGRAL)
11. CONSTRUCT NEW MODIFIED BARRIER CURB (150mm REVEAL HT. INTEGRAL)
12. CONSTRUCT NEW CONCRETE CURB AND GUTTER (180mm REVEAL HT. 600mm WIDTH)
13. CONSTRUCT NEW CONCRETE BARRIER CURB (150mm REVEAL HT.)
14. INSTALL DETECTABLE SURFACE WARNING TILE
15. INSTALL NEW CATCHBASIN (SD-024) c/w CURB AND GUTTER INLET FRAME (AP-011 AND AP-012) AND CONNECT TO EXISTING 250mm Ø LEAD
16. REMOVE EXISTING CATCHBASIN AND ABANDON LEAD
17. REMOVE EXISTING FRAME AND COVER AND INSTALL NEW FRAME AND GRATED COVER (AP-006 AND AP-008)
18. REGRADE EXISTING PATIO BLOCKS TO GRADE



METRIC
WHOLE NUMBERS INDICATE MILLIMETRES
DECIMALIZED NUMBERS INDICATE METRES

150mm W.M.	WATERMAIN	150mm W.M.	HYDRO
300mm L.D.S.	LAND DRAINAGE SEWER	300mm L.D.S.	CONCRETE
250mm W.W.S.	WASTEWATER SEWER	250mm W.W.S.	PROPERTY LINE
○	MANHOLE	⊕	SURVEY BAR
□	CATCH BASIN	⊕	ELEVATION (235.750)
▽	CATCH PIT	⊕	TREE
—	JUNCTIONS	—	SIDEWALK RAMP
—	CULVERT	—	CONCRETE SIDEWALK
—	GAS	—	FENCE
EXISTING	LEGEND - PLAN	PROPOSED	LEGEND - PLAN
EXISTING	LEGEND - PROFILE	PROPOSED	LEGEND - PROFILE

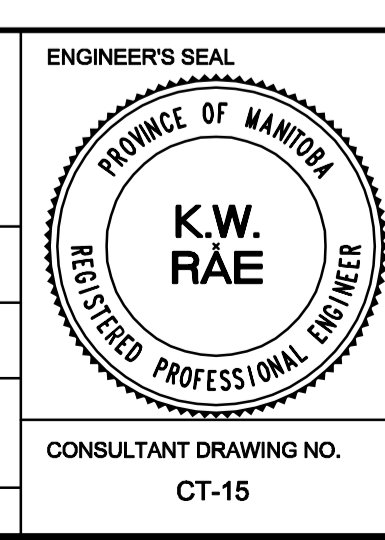
LOCATION APPROVED UNDERGROUND STRUCTURES

SUPV. U/G STRUCTURES COMMITTEE DATE

NOTE:
LOCATION OF UNDERGROUND STRUCTURES AS SHOWN ARE BASED ON THE BEST INFORMATION AVAILABLE. BUT NO GUARANTEE IS GIVEN THAT ALL EXISTING UTILITIES ARE SHOWN OR THAT THE GIVEN LOCATIONS ARE EXACT. CONFIRMATION OF EXISTENCE AND EXACT LOCATION OF ALL SERVICES MUST BE OBTAINED FROM THE INDIVIDUAL UTILITIES BEFORE PROCEEDING WITH CONSTRUCTION.

B.M. 38 - 050 S. side Deer Lodge Pl. near intersection of E. Leg of Deer Lodge Pl., Tbl. in E. Conc. foundation No. 48 Deer Lodge Pl. 0.5 m S. & 0.4 m below stucco of N.E. Cor. of dwelling.

DESIGNED BY	BC/SS	CHECKED BY	BC/KWR
DRAWN BY	JC/SS	APPROVED BY	
HOR. SCALE:	1:250	RELEASED FOR CONSTRUCTION BY:	
VERTICAL:	1:10	DATE	



THE CITY OF WINNIPEG
PUBLIC WORKS DEPARTMENT
ENGINEERING DIVISION

2017 LOCAL STREET RENEWAL PROGRAM

DEER LODGE PLACE-PORTAGE AVENUE TO PORTAGE AVENUE
ASPHALT RECONSTRUCTION
STATION 0+170 TO PORTAGE AVENUE

CITY DRAWING NUMBER
SHEET 15 OF 25