

- REFERENCE NOTES**
- PAVEMENT DIMENSIONS ARE TO BACK OF CURB
 - BASELINE IS CENTRE LINE RIGHT-OF-WAY
 - PROPERTY LINES OBTAINED FROM CITY OF WINNIPEG L.B.I.S., AND NO SCALE FACTOR WAS APPLIED
 - REFER TO AECOM FIELD BOOK NO. 4979
- CONSTRUCTION NOTES**
- REMOVE EXISTING CONCRETE AND ASPHALTIC PAVEMENT AND CONSTRUCT NEW ASPHALTIC PAVEMENT TYPE 1A (100mm)
 - REMOVE EXISTING CONCRETE/ASPHALT PAVEMENT AND CONSTRUCT NEW 150mm REINFORCED CONCRETE PAVEMENT
 - REMOVE EXISTING CONCRETE/ASPHALT PAVEMENT AND CONSTRUCT NEW 150mm REINFORCED CONCRETE PAVEMENT c/w NEW ASPHALTIC PAVEMENT TYPE 1A (65mm)
 - CONSTRUCT NEW BARRIER CURB AND GUTTER (180mm HT.)
 - CONSTRUCT NEW LIP CURB AND GUTTER (40mm HT. INTEGRAL)
 - CONSTRUCT NEW MODIFIED BARRIER CURB (180mm HT. INTEGRAL)
 - CONSTRUCT NEW CURB RAMP (10mm HT. INTEGRAL)
 - INSTALL NEW CURB AND GUTTER INLET c/w CATCHBASIN (SD-024, 1800mm) AND CONNECT TO THE NEW MANHOLE
 - INSTALL 150mm SUBDRAIN
 - REMOVE EXISTING CATCHBASIN AND ABANDON LEAD
 - REMOVE EXISTING CATCHPIT AND ABANDON LEAD
 - ADJUST EXISTING MANHOLE/CATCH BASIN TO GRADE
 - REMOVE EXISTING FRAME AND COVER AND INSTALL NEW FRAME AND SOLID COVER (AP-005 AND AP-004)
 - INSTALL NEW CAST IRON RISER RING
 - RENEW EXISTING 100mm CONCRETE SIDEWALK
 - INSTALL NEW DETECTABLE WARNING SURFACE TILE
 - ADJUST EXISTING PAVING STONES



METRIC
WHOLE NUMBERS INDICATE MILLIMETRES
DECIMALIZED NUMBERS INDICATE METRES

EXISTING	LEGEND - PLAN	PROPOSED	EXISTING	LEGEND - PLAN	PROPOSED	EXISTING	LEGEND - PROFILE	PROPOSED
150 mm W.W.M.	WATERMAIN	150 mm W.W.M.	HYDRO	M.T.S.	— x —	— x —	C PROFILE	— x —
300mm L.D.S.	LAND DRAINAGE SEWER	300mm L.D.S.	CONCRETE	ASPHALT	— — —	— — —	WEST GUTTER	— — —
250mm W.W.S.	WASTEWATER SEWER	250mm W.W.S.	PROPERTY LINE	SURVEY BAR	— — —	— — —	EAST GUTTER	— — —
○	MANHOLE	●	ELEVATION	(235.750)	— — —	— — —	N/W PROPERTY LINE	— — —
□	CATCH BASIN	■	TREE	— — —	— — —	— — —	S/E PROPERTY LINE	— — —
▽	CATCH PIT	▽	SIDEWALK RAMP	— — —	— — —	— — —		
—	JUNCTIONS	—	CONCRETE SIDEWALK	— — —	— — —	— — —		
—	CULVERT	—	FENCE	— — —	— — —	— — —		
—	GAS	—						

LOCATION APPROVED UNDERGROUND STRUCTURES

SUPV. U/G STRUCTURES COMMITTEE DATE

NOTE:
LOCATION OF UNDERGROUND STRUCTURES AS SHOWN ARE BASED ON THE BEST INFORMATION AVAILABLE. BUT NO GUARANTEE IS GIVEN THAT ALL EXISTING UTILITIES ARE SHOWN OR THAT THE GIVEN LOCATIONS ARE EXACT. CONFIRMATION OF EXISTENCE AND EXACT LOCATION OF ALL SERVICES MUST BE OBTAINED FROM THE INDIVIDUAL UTILITIES BEFORE PROCEEDING WITH CONSTRUCTION.

B.M. 38 - 068	59R655 NE Cor. Lodge Ave. & Whyteswold Rd.		
ELEV. 236.140	Tilt on top of 0.05 m dia. x 2.4 m iron pipe, 3.4 m E. of W.L. of Whyteswold Rd. & on N.L. of Lodge Ave.		
NO.	REVISIONS	DATE	BY

AECOM

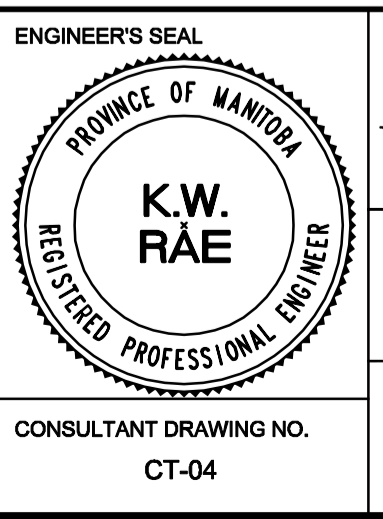
DESIGNED BY: BC/SS
CHECKED BY: BC/KWR

DRAWN BY: JT/PB
APPROVED BY:

HOR. SCALE: 1:250
VERTICAL: 1:10

RELEASED FOR CONSTRUCTION BY:

DATE: _____



THE CITY OF WINNIPEG
PUBLIC WORKS DEPARTMENT
ENGINEERING DIVISION

2017 LOCAL STREET RENEWAL PROGRAM

OLIVE STREET - PORTAGE AVENUE TO LODGE AVENUE
ASPHALT RECONSTRUCTION
STATION 0+470 TO LODGE AVENUE

CITY DRAWING NUMBER: SHEET 04 OF 25

CONSULTANT DRAWING NO. CT-04