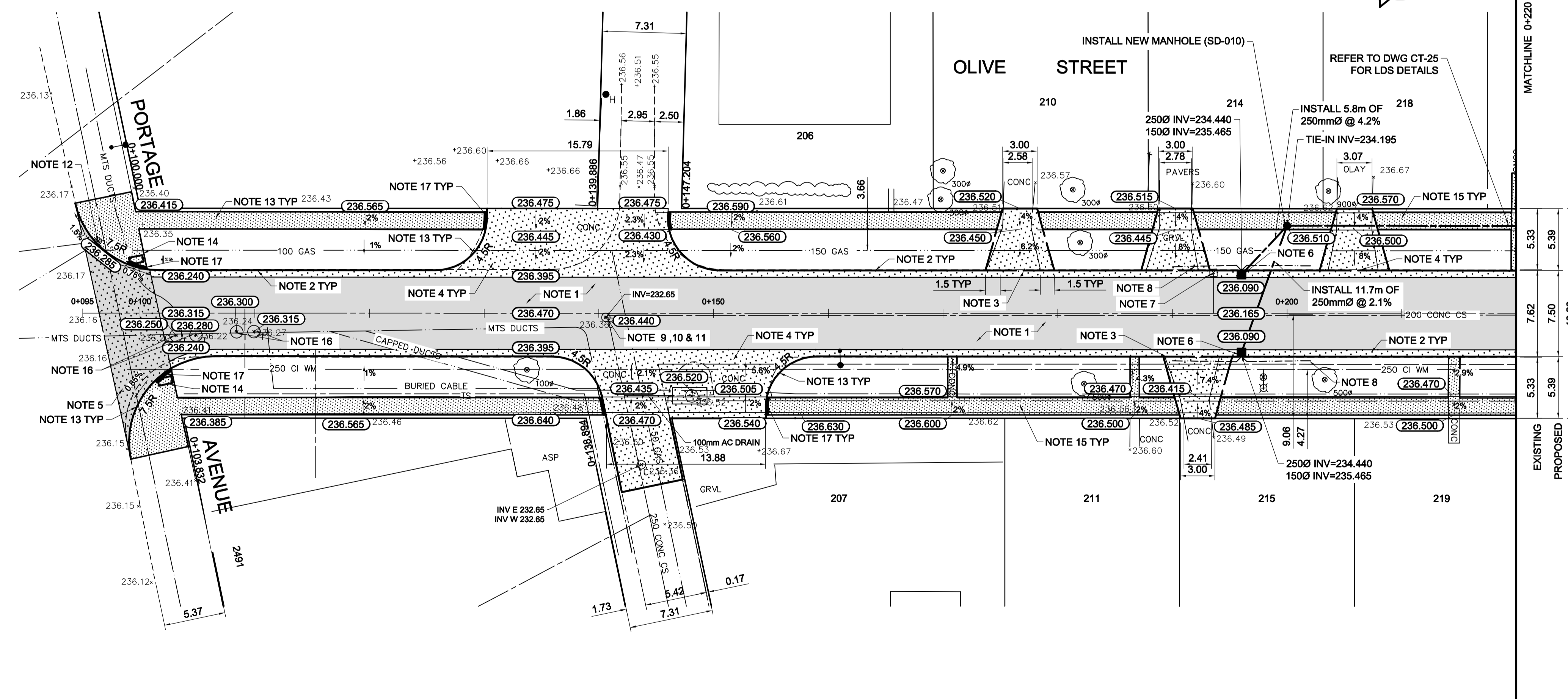


- REFERENCE NOTES**
- PAVEMENT DIMENSIONS ARE TO BACK OF CURB
  - BASELINE IS CENTRE LINE RIGHT-OF-WAY
  - PROPERTY LINES OBTAINED FROM CITY OF WINNIPEG L.B.I.S., AND NO SCALE FACTOR WAS APPLIED
  - REFER TO AECOM FIELD BOOK NO. 4979

- CONSTRUCTION NOTES**
- REMOVE EXISTING CONCRETE AND ASPHALTIC PAVEMENT AND CONSTRUCT NEW ASPHALTIC PAVEMENT TYPE1A (100mm)
  - CONSTRUCT NEW BARRIER CURB AND GUTTER (180mm HT.)
  - CONSTRUCT NEW LIP CURB AND GUTTER (40mm HT. INTEGRAL)
  - REMOVE EXISTING CONCRETE/ASPHALT PAVEMENT AND CONSTRUCT NEW 150mm REINFORCED CONCRETE PAVEMENT
  - REMOVE EXISTING CONCRETE/ASPHALT PAVEMENT AND CONSTRUCT NEW 200mm REINFORCED CONCRETE PAVEMENT c/w ASPHALTIC OVERLAY TYPE 1A (50mm)
  - INSTALL NEW CURB AND GUTTER INLET c/w CATCHBASIN (SD-024, 1800mm) AND CONNECT TO NEW MANHOLE
  - REMOVE EXISTING CATCHBASIN AND INLET AND ABANDON LEAD
  - INSTALL 150mm SUBDRAIN
  - ADJUST EXISTING MANHOLE/CATCH BASIN TO GRADE
  - REMOVE EXISTING FRAME AND COVER AND INSTALL NEW FRAME AND SOLID COVER (AP-005 AND AP-004)
  - INSTALL NEW CAST IRON RISER RING
  - ADJUST EXISTING WATER VALVE TO GRADE
  - CONSTRUCT NEW MODIFIED BARRIER CURB (150mm HT, INTEGRAL)
  - INSTALL NEW DETECTABLE WARNING SURFACE TILE
  - RENEW EXISTING 100mm CONCRETE SIDEWALK
  - INSTALL NEW MTS RISER RING
  - CONSTRUCT NEW CURB RAMP (10mm HT. INTEGRAL)



**METRIC**  
WHOLE NUMBERS INDICATE MILLIMETRES  
DECIMALIZED NUMBERS INDICATE METRES

EXISTING	LEGEND - PLAN	PROPOSED	EXISTING	LEGEND - PLAN	PROPOSED	EXISTING	LEGEND - PROFILE	PROPOSED
150 mm W.M.	WATERMAIN	150 mm W.M.	---	HYDRO	---	---	Q PROFILE	---
300mm L.D.S.	LAND DRAINAGE SEWER	300mm L.D.S.	---	CONCRETE	---	---	WEST GUTTER	---
250mm W.W.S.	WASTEWATER SEWER	250mm W.W.S.	---	ASPHALT	---	---	EAST GUTTER	---
○	MANHOLE	●	---	PROPERTY LINE	---	---	N/W PROPERTY LINE	---
□	CATCH BASIN	■	---	SURVEY BAR	---	---	S/E PROPERTY LINE	---
▽	CATCH PIT	▼	---	ELEVATION	---	---		---
+	JUNCTIONS	+	---	TREE	---	---		---
—	CULVERT	—	---	SIDEWALK RAMP	---	---		---
—	GAS	—	---	CONCRETE SIDEWALK	---	---		---
---	LEGEND - PLAN	---	---	FENCE	---	---		---

**LOCATION APPROVED UNDERGROUND STRUCTURES**

SUPV. U/G STRUCTURES COMMITTEE DATE

**NOTE:**  
LOCATION OF UNDERGROUND STRUCTURES AS SHOWN ARE BASED ON THE BEST INFORMATION AVAILABLE. BUT NO GUARANTEE IS GIVEN THAT ALL EXISTING UTILITIES ARE SHOWN OR THAT THE GIVEN LOCATIONS ARE EXACT. CONFIRMATION OF EXISTENCE AND EXACT LOCATION OF ALL SERVICES MUST BE OBTAINED FROM THE INDIVIDUAL UTILITIES BEFORE PROCEEDING WITH CONSTRUCTION.

NO.	REVISIONS	DATE	BY
0	REVISED SECTION ISSUED FOR TENDER	05/05/2017	BC
A	ISSUED FOR REVIEW	05/04/2017	BC
		04/21/2017	BC

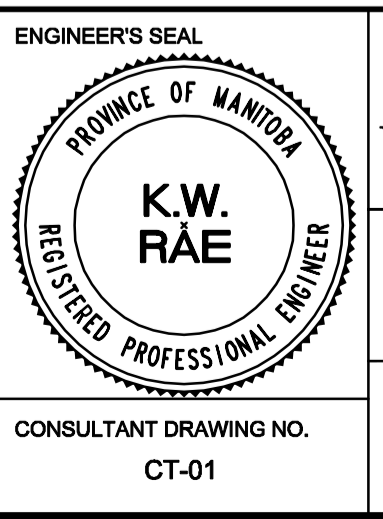
**AECOM**

DESIGNED BY: BC/SS  
DRAWN BY: JT/PB

CHECKED BY: BC/KWR  
APPROVED BY: [Signature]

HOR. SCALE: 1:250  
VERTICAL: 1:10

RELEASED FOR CONSTRUCTION BY: [Signature]



**THE CITY OF WINNIPEG**  
PUBLIC WORKS DEPARTMENT  
ENGINEERING DIVISION

2017 LOCAL STREET RENEWAL PROGRAM

OLIVE STREET - PORTAGE AVENUE TO LODGE AVENUE  
ASPHALT RECONSTRUCTION  
PORTAGE AVENUE TO STATION 0+220

CITY DRAWING NUMBER: SHEET 01 OF 25

CONSULTANT DRAWING NO. CT-01