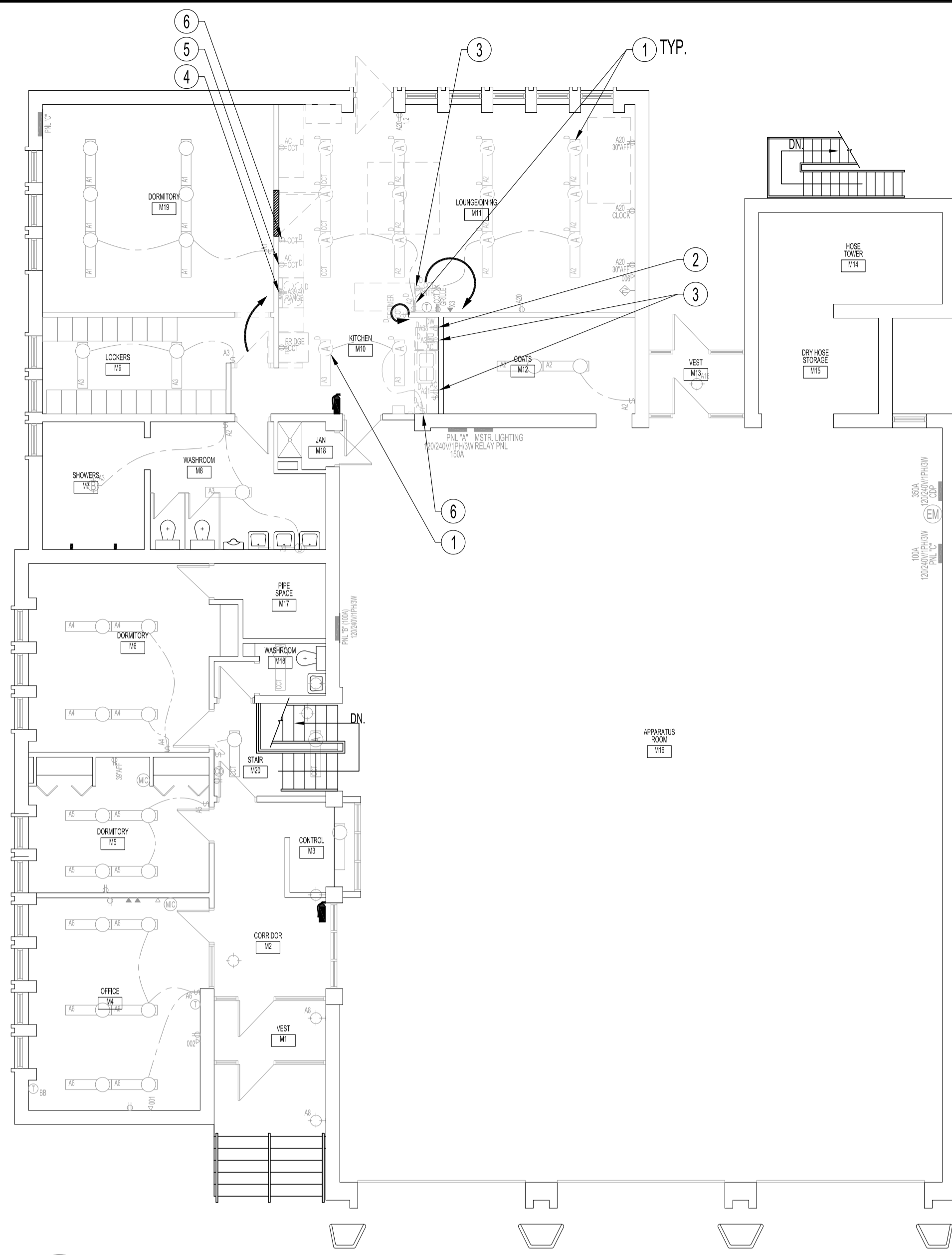
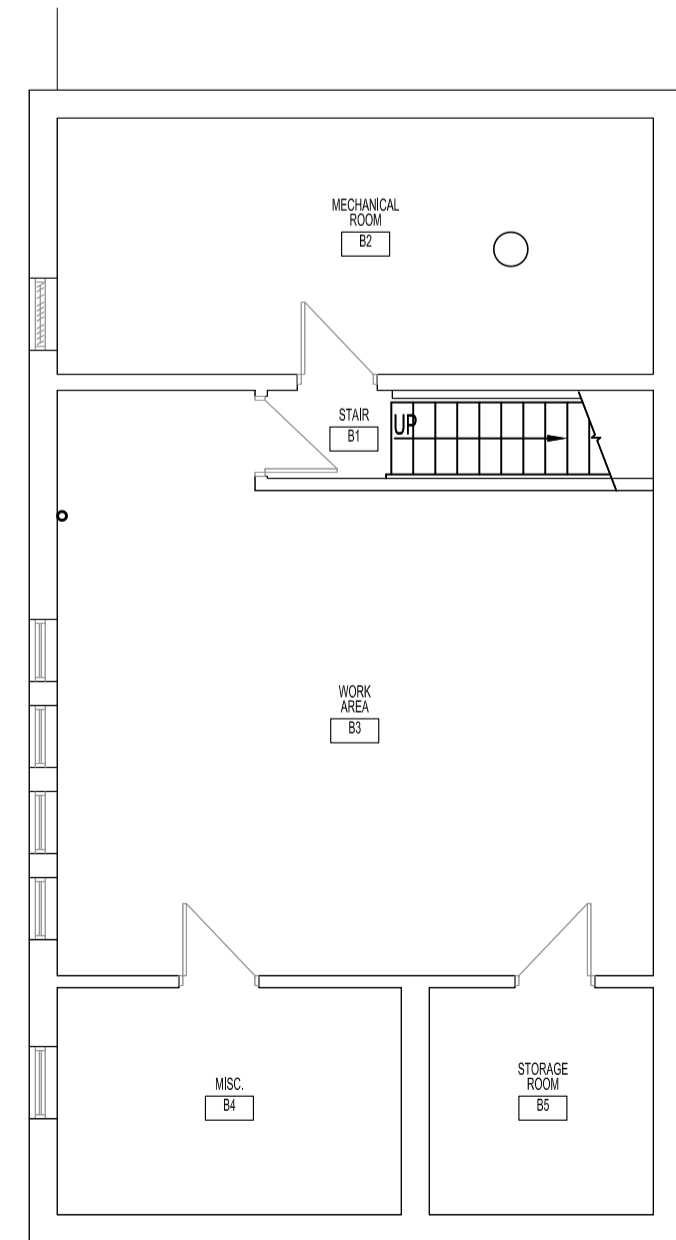


NOTES:  
REFER TO DRAWING E1, NOTES.



DEMOLITION - MAIN FLOOR PLAN  
SCALE: 1/8"=1'-0"



BASEMENT FLOOR PLAN  
SCALE: 1/8"=1'-0"

ELECTRICAL POWER & SYSTEMS

DEMOLITION NOTES: "X"

ALSO SEE NOTES & SPECIFICATIONS.

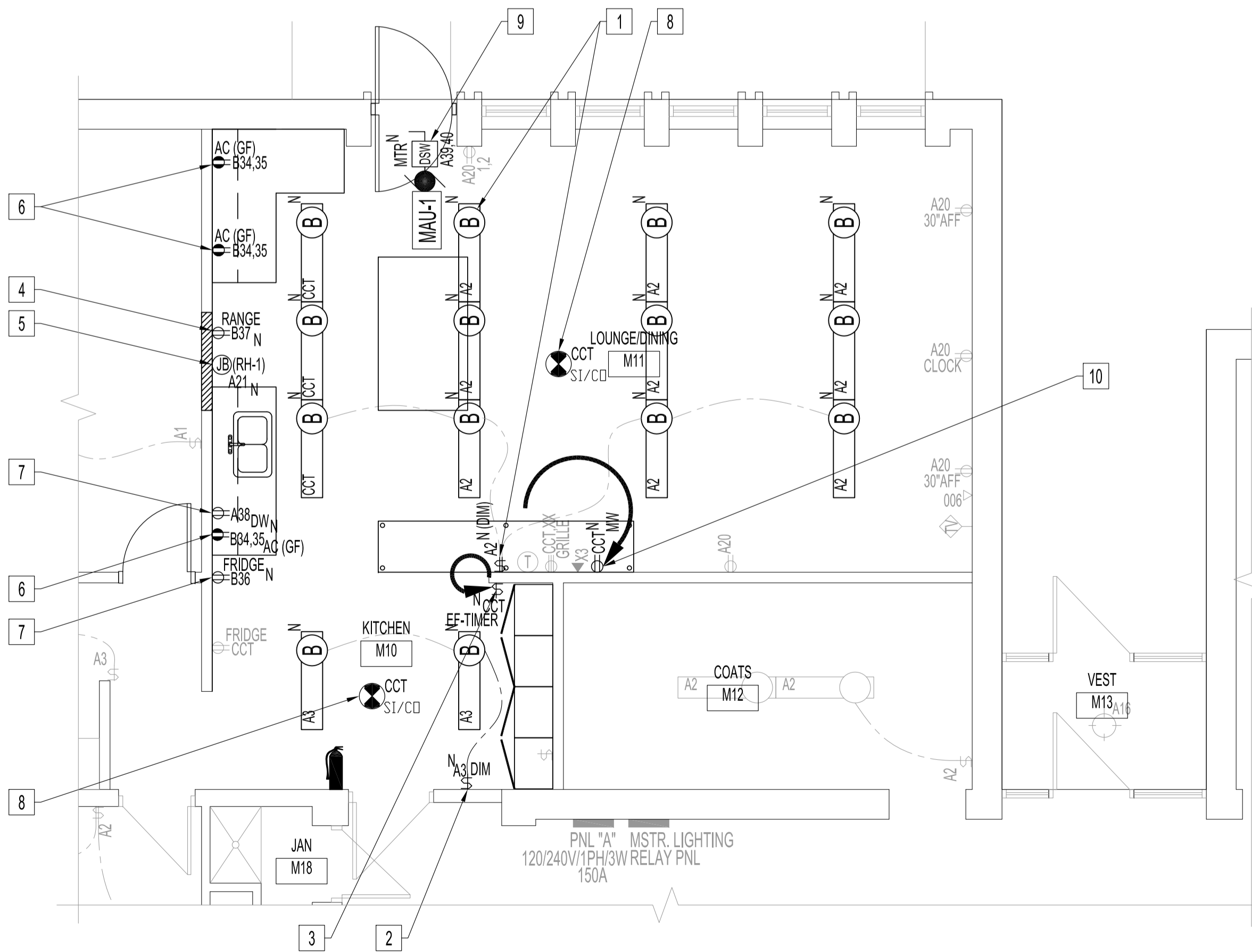
1. REPLACE TYPE "A" LUMINAIRES & LIGHT SWITCHES IN KITCHEN & LOUNGE/DINING. SEE RENOVATION NOTES.
2. RELOCATE DW CIRCUIT. SEE RENOVATION NOTE.
3. RELOCATE RECEPTACLE & CIRCUIT TO NEW MW RECEPTACLE.
4. REMOVE RANGE RECEPTACLE & CIRCUIT BACK TO PANEL.
5. RELOCATE RECEPTACLE & CIRCUIT. SEE RENOVATION NOTES.
6. RELOCATE SWITCH.

ELECTRICAL POWER & SYSTEMS

RENOVATION NOTES: "X"

ALSO SEE NOTES & SPECIFICATIONS.

1. PROVIDE LUMINAIRES & LIGHT SWITCHES IN KITCHEN, LOUNGE/DINING WITH TYPE SHOWN. WIRE TO NEW 2-GANG DIMMER SWITCH WITH 0-10V CONTROL.
2. RELOCATED DEVICE BOX FOR NEW DIMMER SWITCH TO CLEAR NEW STORAGE UNITS, SEE ARCHITECTURAL DRAWINGS.
3. RELOCATE EXISTING EXHAUST TIMER SWITCH TO ADJACENT WALL WITH NEW WALL BOX. WIRING & BOX TO BE CONCEALED IN WALL.
4. PROVIDE DEDICATED IN-WALL RANGE RECEPTACLE, 120V, 15A CIRCUIT, #12/2 RW90 IN EMT TO 15A-1P BREAKER. MOUNT HEIGHT TO ALLOW RANGE INSTALLATION.
5. PROVIDE JUNCTION BOX & CONNECT RANGE HOOD EXHAUST FAN, (RH-1) SEE MECHANICAL DRAWING, TO EXISTING CIRCUIT SHOWN.
6. PROVIDE AC IN-WALL SPLIT-CIRCUIT RECEPTACLES, 120V, 15A CIRCUITS, #12/2 RW90 BX TO 15A-1P BREAKERS.
7. PROVIDE DEDICATED IN-WALL APPLIANCE RECEPTACLES & CIRCUITS SHOWN, 120V, 15A CIRCUIT, #12/2 RW90 IN EMT TO 15A-1P BREAKER. CONFIRM LOCATIONS WITH CONTRACT ADMINISTRATOR.
8. PROVIDE CEILING-MOUNTED SMOKE/CO DETECTOR, 120V WITH BATTERY BACK-UP. WIRE TO AVAILABLE CIRCUIT.
9. PROVIDE DISCONNECT SWITCH & 240V, 50A CIRCUIT, #6/3 RW90 IN EMT TO 50A-2P CIRCUIT BREAKER. USE CURRENT SENSOR ON MAU-1 TO INTERLOCK, MAU-1, WITH RANGE HOOD, RH-1, AS PER MANUFACTURER INSTRUCTIONS. PROVIDE CEILING ACCESS HATCH FOR SERVICING.
10. RELOCATED RECEPTACLE FOR NEW MW.



RENOVATION - PARTIAL MAIN FLOOR AND REFLECTED CEILING PLAN  
SCALE: 1/4"=1'-0"

No.	REVISION/DESCRIPTION	BY	DATE
1	ISSUE FOR ADDENDUM 1: FOR CLARITY ADDED "IN-WALL" TO RENO NOTES 4.6.7.	DTA	2017.12.04
0	ISSUE FOR CONSTRUCTION	DTA	2017.11.15



DRAWN	DATE	CHECKED	DESIGNED	APPROVED
DTA	2017.10.23	USER	DTA	DTA

THE CITY OF WINNIPEG  
PLANNING, PROPERTY AND  
DEVELOPMENT DEPARTMENT  
MUNICIPAL ACCOMMODATIONS DIVISION  
3-65 GARRY STREET, R3C 4K4

PROJECT  
WINNIPEG FIRE PARAMEDIC SERVICES  
STATION No.16  
INTERIOR RENOVATIONS  
1001 MCGREGOR STREET BID OPP: 1013-2017

SHEET TITLE  
BASEMENT AND MAIN FLOOR PLANS  
DEMOLITION AND RENOVATION  
POWER AND SYSTEMS

SCALE	PROJECT No:	SHEET No:
AS SHOWN	2016-009	E2R1