

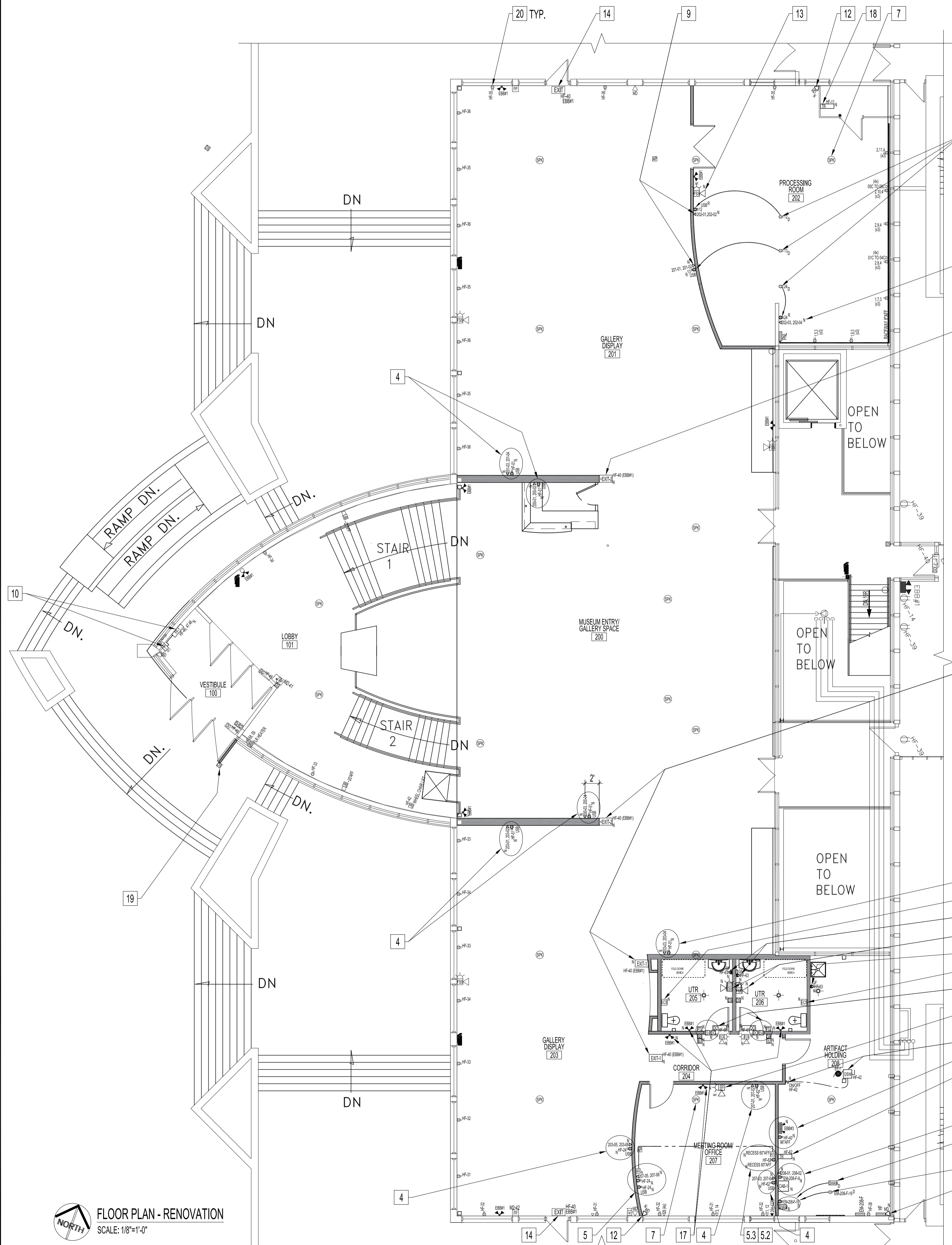
NOTES:  
REFER TO ELECTRICAL SPECIFICATIONS & DRAWING E1.

ELECTRICAL POWER, DATA & COMMUNICATIONS

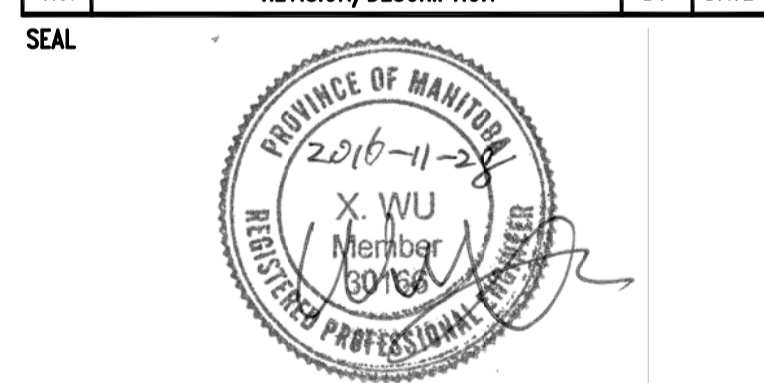
RENOVATION NOTES: "X"

ALSO SEE NOTES & SPECIFICATIONS.  
ALL WIRING & CABLING SHALL BE CONCEALED IN DOOR JAMB &/OR IN WALL CAVITY FOR FINISH SPACE (EG. OFFICES, MEETING ROOM CORRIDORS...)  
ALL WIRING & CABLING IN CEILING SPACE SHALL BE PLENUM RATED AS PER LATEST CEC.

- 1. UTR POWER DOOR OPERATOR
  - 1.1. PROVIDE NEW POWER DOOR OPERATOR & DOOR CONTACT (DC). SEE ARCH. DOOR SCHEDULE. WITH 120V, 15A CIRCUIT #12/2 RW90 IN EMT TO DESIGNATED 15A/1P CIRCUIT BREAKER. SETUP FOR "PUSH & GO" & DS.
  - 1.2. SETUP ES FOR FAIL-SAFE
  - 1.3. PROVIDE CAMDEN MODEL CM-7536/4; CAMDEN CX-WC1 KIT INCLUDES CX-22 DUAL FUNCTION RELAY, CX-MDC SURFACE MOUNT DOOR CONTACT, CM-400/8 ILLUMINATED "PUSH TO LOCK" PUSH BUTTON WITH STATUS LIGHT (WALL MOUNT ON TOP OF INSIDE UTR DS AT 36" AFF), CM-30 OWL "OCCUPIED WHEN LIT" ILLUMINATION SIGN (WALL MOUNT ON TOP OF OUTSIDE UTR DS AT 48" AFF).
  - 1.4. PROVIDE ALL NECESSARY LOW VOLTAGE WIRING & COMPONENTS. INSTALL CAMDEN CX-22 CONTROLLER INSIDE DOOR OPERATOR UNIT OR SUPPLY & INSTALL PANEL BOX WITH ACCESS DOOR TO HOUSE CAMDEN CX-22 CONTROLLER.
  - 1.5. SEQUENCE OF OPERATION:
    - 1.5.1. SET CAMDEN CX-22 RESTROOM DOOR CONTROLLER /BI-DIRECTIONAL DOOR SEQUENCER TO APPLICATION MODE 1 (BARRIER-FREE DOOR OPERATOR ON A SINGLE-USE OCCUPANT UTR). ACTIVATE EXTERIOR UTR TO GAIN ACCESS TO INSIDE UTR. ONCE INSIDE UTR, THE USER PRESSES THE "PUSH TO LOCK" SWITCH, WHICH SIGNALS THE RELAY TO LOCK ELECTRIC STRIKE (STATUS LIGHT "LOCK"), & DISABLES THE EXTERIOR "DS". EXITING CAN BE DONE MANUALLY, VIA THE LEVER HANDLE LOCKSET OR BY PRESSING THE INTERIOR DS, THEREBY RESETTING THE CONTROLLER.
- 2. EMERGENCY CALL SYSTEM (ECS)
  - 2.1. PROVIDE, ECS, SEE LUMINAIRE & SWITCH SCHEDULE. WITH ALL NECESSARY WIRING, RELAYS, ELECTRICAL COMPONENTS & HARDWARE. CALL IS LOCAL.
  - 2.2. MOUNT HORNISTROBE OUTSIDE & ABOVE WASHROOM DOOR
  - 2.3. MOUNT CENTERLINE PULL CORD SWITCH 42" ABOVE FINISH FLOOR & 48" FROM CORNER.
- 3. PROVIDE GFCI DUPLEX RECEPTACLE WITH #12/2 RW90 IN CONDUIT TO NEW DESIGNATED 15A/1P CIRCUIT BREAKER. MOUNT 45" AFF.
- 4. PROVIDE DUPLEX RECEPTACLES (AS SHOWN, USB OR NON-USB) WITH #12/2 RW90 IN CONDUIT TO NEW DESIGNATED 15A/1P CIRCUIT BREAKER.
  - 4.1. PROVIDE (2) DATA DROPS IN 1/2" CONDUIT INSIDE WALL CAVITY & TERMINATE TO A SINGLE DEVICE BOX WITH A TWO-PORT FACEPLATE, HOME RUN & TERMINATE CABLES TO NEW NETWORK DATA PATCH PANEL IN ARTIFACT HOLDING 208. ALSO REFER TO DATA CABLING SPEC DRAWING E7.
- 5. PROVIDE 2-GANG (1) WITH USB DUPLEX RECEPTACLES WITH #12/2 RW90 IN CONDUIT TO NEW DESIGNATED 15A/1P CIRCUIT BREAKER.
  - 5.1. PROVIDE DEVICE BOX TO HOUSE SUPPLIED AUDIO 3.5 mm INPUT STEREO, VGA & HDMI.
  - 5.2. PROVIDE RECESSED DUPLEX RECEPTACLES WITH #12/2 RW90 IN CONDUIT TO NEW DESIGNATED 15A/1P CIRCUIT BREAKER.
  - 5.3. PROVIDE RECESSED DEVICE BOX TO HOUSE SUPPLIED AUDIO 3.5 mm INPUT STEREO, VGA & HDMI. PROVIDE PATCH CABLING TO CONNECT TO WEST WALL A/V DEVICE BOX IN EMT ROUTED VIA NEW CEILING SPACE.
- 6. RELOCATE DUPLEX RECEPTACLE CIRCUIT & WIRING. PROVIDE NEW DECORA STYLE DUPLEX RECEPTACLE & FACEPLATE. CONFIRM EXACT LOCATION WITH CONTRACT ADMINISTRATOR.
- 7. RELOCATE PUBLIC ADDRESS SPEAKER CIRCUIT & WIRING TO NEW ROOM CEILING. TEST SPEAKER FOR FUNCTION.
- 8. PRIOR TO RELOCATION CONTACT SHAW FOR COORDINATION. RELOCATE SHAW WI-FI DEMARCATION SYSTEM TO NEW WEST WALL MOUNT HEIGHT TO BE SAME AS EXISTING. CONFIRM EXACT LOCATION WITH CONTRACT ADMINISTRATOR.
- 9. PROVIDE (2) DATA DROPS IN 1/2" CONDUIT INSIDE WALL CAVITY & TERMINATE TO A SINGLE DEVICE BOX WITH A TWO-PORT FACEPLATE, HOME RUN & TERMINATE CABLES TO NEW NETWORK DATA PATCH PANEL IN ARTIFACT HOLDING 208.
- 10. PROVIDE ELECTRIC FAN FORCE HEATER, FF-1. SEE SPEC, WITH (4) #6 RW90 IN CONDUIT TO NEW DESIGNATED 30A/3P CIRCUIT BREAKER. PROVIDE DISCONNECT SWITCH & CONTACTOR AS PER DIVISION 16. TO BE CONTROLLED BY SUPPLIED DIGITAL WALL THERMOSTAT W/ CLEAR GUARD TO BE MOUNTED ABOVE EXISTING IN-FLOOR THERMOSTAT.
- 11. PROVIDE EXHAUST FAN, EF-1. SEE MECH. SPEC. WIRE WITH #12/2 RW90 IN CONDUIT TO NEW DESIGNATED 15/1P CIRCUIT BREAKER. PROVIDE DISCONNECT SWITCH TO BE CONTROLLED FROM SUPPLIED WALL SWITCH ("ON/OFF" WITH STATUS INDICATOR).
- 12. PROVIDE SECURITY MOTION DETECTOR HEAD & WIRE TO EXISTING SYSTEM. TYPE & MOUNTING DETAILS TO BE SAME AS EXISTING.
- 13. PROVIDE FIRE ALARM STROBE SIREN & WIRE IN CONDUIT TO EXISTING FIRE ALARM SYSTEM. TYPE TO BE SAME AS EXISTING.
- 14. REPLACE EXISTING RED EXIT SIGN. SEE SPEC WITH GREEN RUNNING MAN LED EXIT SIGN. WIRE TO EXISTING CIRCUIT, MAYBE CHANGED OVER TO RED EXIT SIGN BASED ON AUTHORITY HAVING JURISDICTION REVIEW.
- 15. PROVIDE GREEN RUNNING MAN LED EXIT SIGN. SEE SPEC, WIRE IN CONDUIT TO EXISTING CIRCUIT & EBB #1, MAYBE CHANGED OVER TO RED EXIT SIGN BASED ON AUTHORITY HAVING JURISDICTION REVIEW.
- 16. PROVIDE EMERGENCY BATTERY BANK, EBB #3. SEE SPEC, WITH DUPLEX RECEPTACLE, AS SHOWN, WIRE IN CONDUIT TO EXISTING CIRCUIT, HF-40.
- 17. PROVIDE EMERGENCY REMOTE HEADS. SEE SPEC, COLOUR - BLACK FOR BLACK WALLS, WHITE FOR NON-BLACK WALLS. WIRE IN CONDUIT TO NEW EBB#3.
- 18. TRANSFORMER POWER FOR VAVs
  - 18.1. PROVIDE CLASS II TRANSFORMER WITH 120VAC - 24VAC, 24VA RATING, SINGLE PHASE, FOOT MOUNTING, FRAME ENCLOSURE. MOUNT TRANSFORMERS SECURELY ON WALL FOR PROCESSING ROOM 202 & ARTIFACT HOLDING 208.
- 19. CONFIRM OPERATION OF EXISTING DOOR ACTUATOR SWITCH. REPAIR IF REQUIRE.
- 20. IN AREA OF WORK, REPLACE ALL EXISTING OR MISSING FACEPLATES FOR RECEPTACLES, DATA PORTS & PHONES WITH STAINLESS STEEL FACEPLATES FOR NON-BLACK WALLS
  - 20.1. FOR BLACK WALLS - REPLACE ALL EXISTING RECEPTACLES TO BLACK RECEPTACLES WITH BLACK FACEPLATES.
- 21. PROVIDE WALL MOUNT RACK, CAB-1, 36" AFF ON NEW 4x4" PAINTED PLYWOOD (GREY). PROVIDE 48-PORT PATCH PANEL & CABLE MANAGEMENT HARDWARE TO NEATLY SECURE ALL NEW DATA CABLING, DATE PORTS SHALL BE SEQUENTIALLY FROM LEFT TO RIGHT ON PATCH PANEL, AS SHOWN & AS PER SPECIFICATION.
  - 21.1. PROVIDE (2) DUPLEX RECEPTACLE NEXT TO CAB-1 WITH #12/2 RW90 IN CONDUIT TO DESIGNATED 15A/1P CIRCUIT BREAKER.
  - 21.2. PROVIDE (2) DATA DROPS IN 1/2" CONDUIT & TERMINATE TO A SINGLE DEVICE BOX WITH A TWO-PORT FACEPLATE, HOME RUN & TERMINATE CABLES TO NETWORK DATA PATCH PANEL.



No.	REVISION/DESCRIPTION	BY	DATE
2	ISSUED FOR ADDENDUM No:2	DTA	2016.12.08
1	ISSUED FOR ADDENDUM No:1	DTA	2016.12.09
0	ISSUED FOR CONSTRUCTION.	DTA	2016.11.28



DATE	DRAWN	CHECKED	DESIGNED	APPROVED
2016.11.18	DTA	DTA	DTA	DTA

THE CITY OF WINNIPEG  
PLANNING, PROPERTY AND  
DEVELOPMENT DEPARTMENT  
MUNICIPAL ACCOMMODATIONS DIVISION  
3-65 GARRY STREET, R3C 4K4

PROJECT  
AQUATIC HALL OF FAME MUSEUM  
ROYAL GALLERY SPACE RESTORATION

25 POSEIDON BAY  
SHEET TITLE

FLOOR PLAN  
ELECTRICAL - RENOVATION  
POWER, DATA, COMMUNICATION

SCALE	PROJECT No:	SHEET No:
AS SHOWN	2014-148	E3R2

FLOOR PLAN - RENOVATION  
SCALE: 1/8"=1'-0"