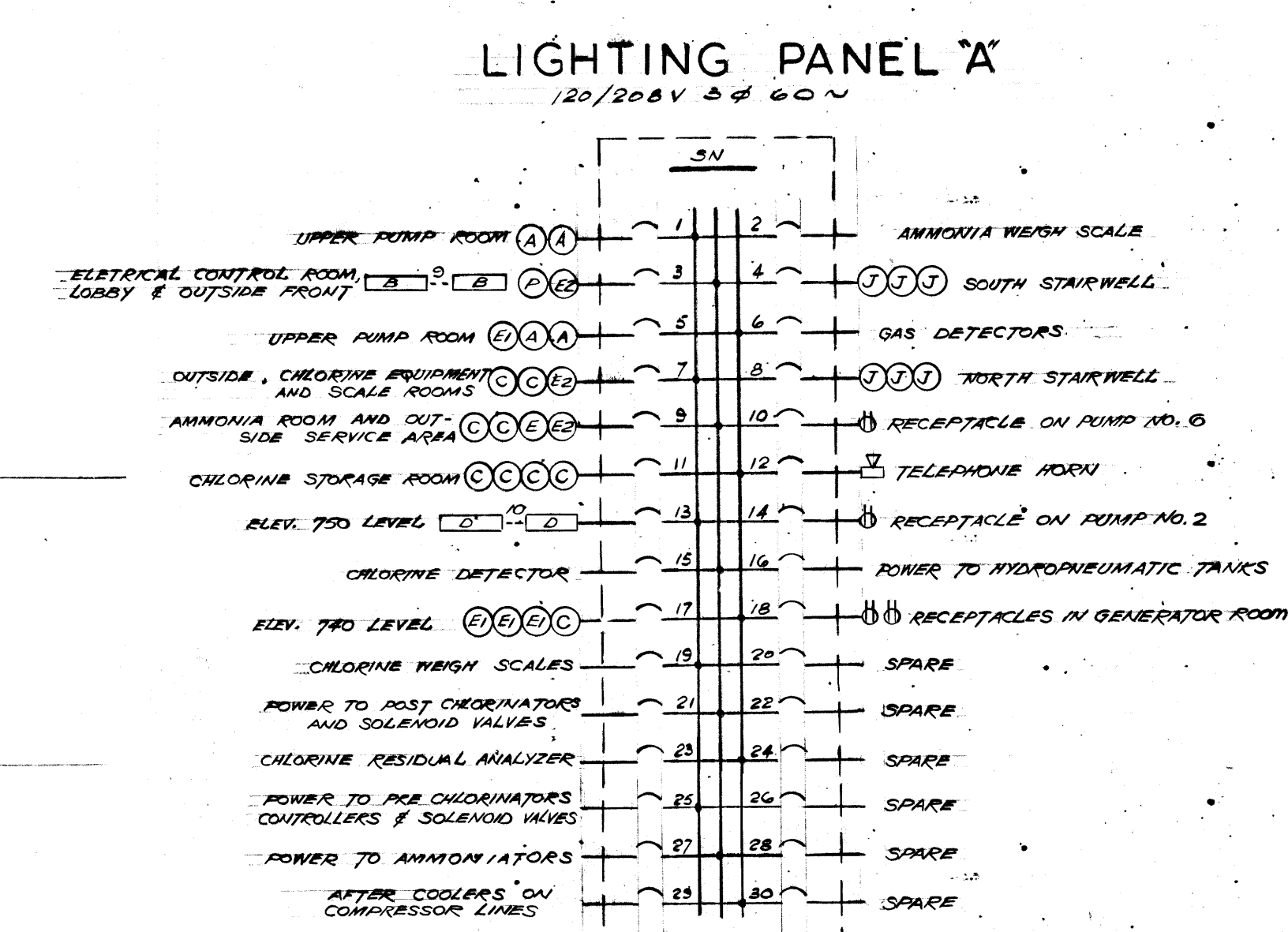
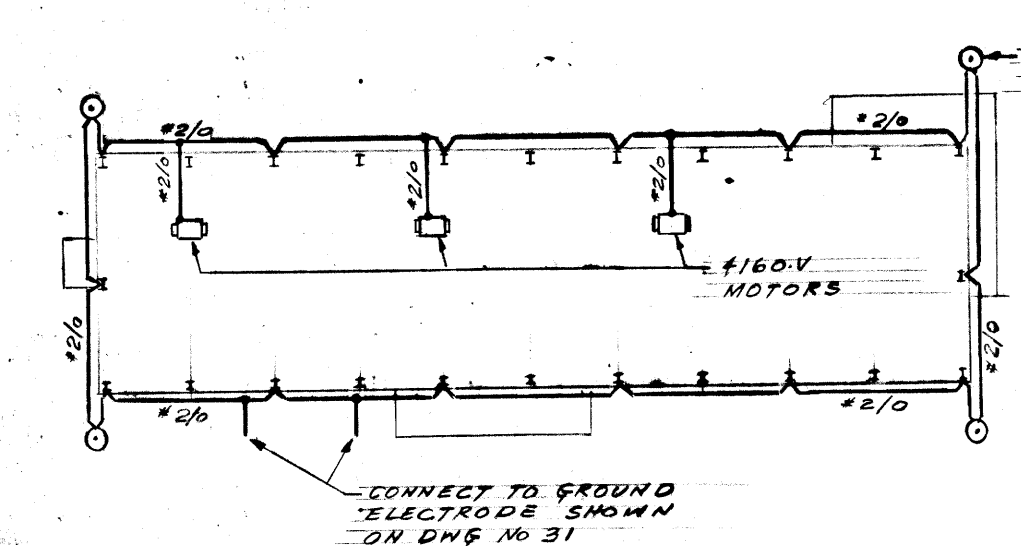


LIGHTING ABOVE ELEV. 762.0
SCALE 1/8" = 1'-0"

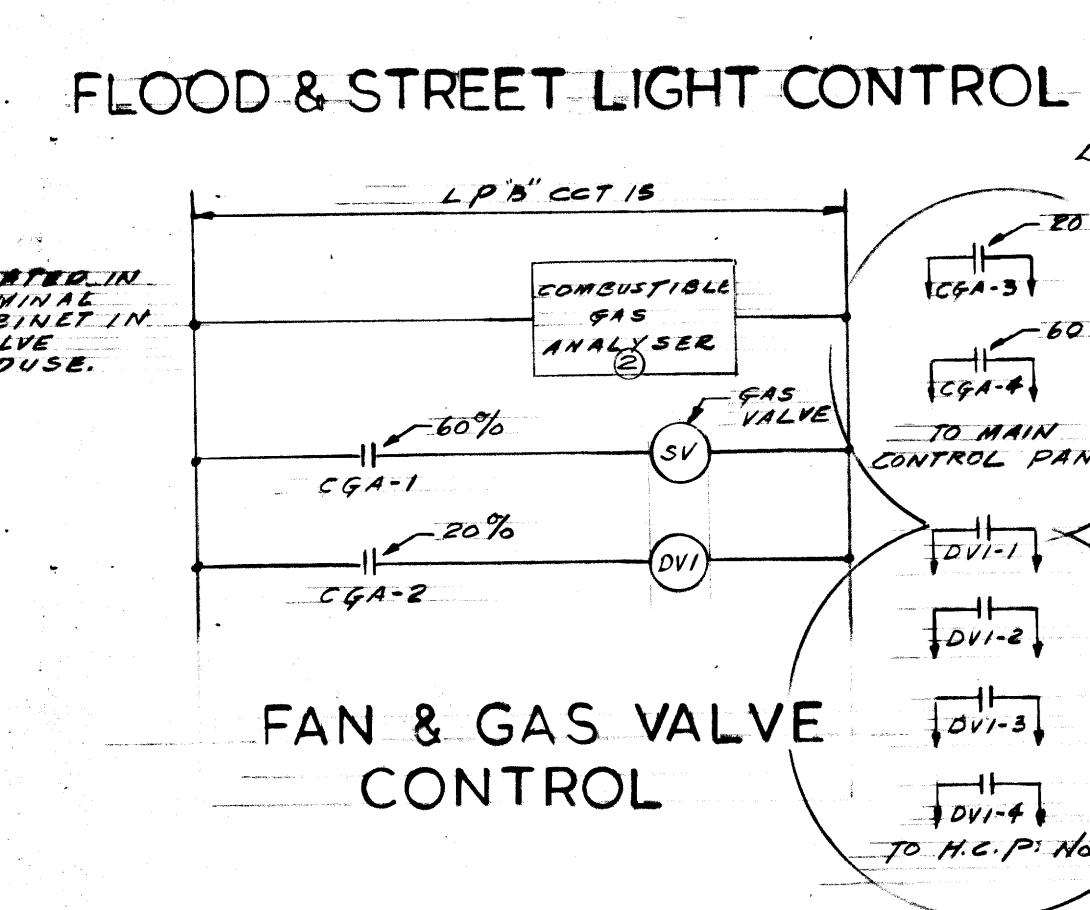


LIGHTING PANEL 'B'
120/208V 3Ø 60~

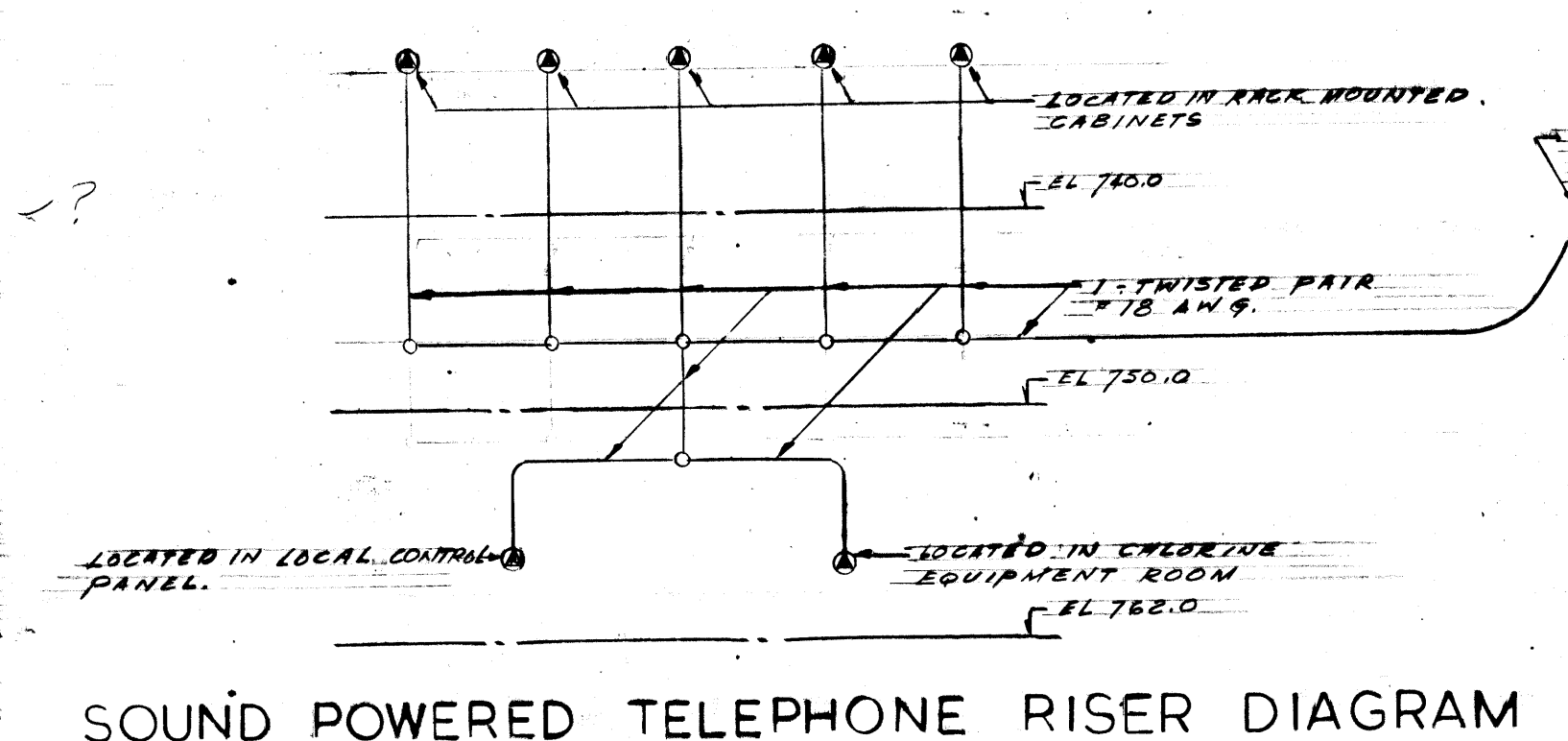
LIGHTING FIXTURE SCHEDULE				
TYPE	DESCRIPTION	CAT. No.	WATTAGE	MOUNTING HEIGHT ABOVE FLOOR OR PLATFORM
A	RECESSED HIBAY MERCURY VAPOUR	HOLOPHANE R620 AL	400W	PUMP AREA - 44'-0"
B	RECESSED TROFFER WITH ACRYLIC-ELECTRO LENS NO. 2	ELECTROLIER KLA-32-24B	2-40W	ELECTRICAL & CONTROL RM. - 12'-0" WASHROOM - 10'-0" VESTIBULE - 10'-0" LOBBY - 10'-0"
C	INDUSTRIAL VAPORTIGHT LUMINAIRE	HOLOPHANE O2423	300W	CHLORINE EQUIP. - 18'-0" CHLORINE STOR. - 18'-0" CHLORINE SCALES - 18'-0" AMMONIA RM. - 18'-0"
D	INDUSTRIAL FLUORESCENT	ELECTROLIER KTA-4E-4B	2-40W	MESSEANINE - 10'-6" GENERATOR ROOM - 10'-6"
E	INDUSTRIAL-OUTDOOR LUMINAIRE	HOLOPHANE B31	200W	SERVICE AREA - 12'-6" PUMP AREA - 9'-0"
E1	OUTDOOR UNIT	HOLOPHANE 415	150W	
E2	OUTDOOR UNIT	HOLOPHANE 420	200W	
F	INDUSTRIAL LOBBY	HOLOPHANE G82 AL	300W	PUMP AREA (BELOW NEZZ.) - 10'-6"
H	INDUSTRIAL UNIT RAINLIGHT	CROUSE-HINDS KVA 20 21	200W	DISCHARGE HEADER AREA - 7'-6"
J	INDUSTRIAL LOBBY	HOLOPHANE G86 AL	300W	STAIR CASE I - MOUNT 4'-0" BELOW CEILING STAIR CASE II - "
K	HEAVY DUTY SODIUM FLOODLIGHT	CROUSE HINDS SVF 200 P	200W	MOUNT ON CONCRETE PLINTH WITH WEATHERPROOF JUNCTION BOX
L	RECESSED INCANDESCENT	HOLOPHANE F-740	150W	SERVICE AREA II - 12'-6"
M	STREET LIGHT LUMINAIRE WITH INTEGRAL BALLAST	C.G.E. 57340 95	175W	MOUNT ON 20'-0" ALUMINUM STANDARD POWERLITE DEVICES P & K DAVID CAT NO. D732272-532
N	WARNING LIGHT-1 WITH RED & 1 WITH AMBER LENS	CROUSE HINDS WL 25	60W-TYPE A21 LAMP	MOUNT OVER ENTRANCE AS INDICATED ON DWG
P	OUTDOOR ENTRANCE FIXTURE	WAKEFIELD G22AAKI	2-75W	CEILING MOUNTED WITH PROVISION TO RECEIVE 1/2" CONDUIT IN SIDE



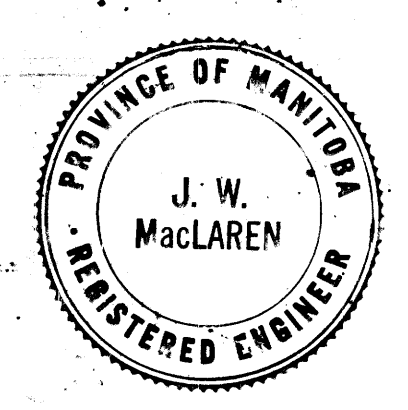
GROUNDING PLAN
SCALE 1" = 4'-0"



FAN & GAS VALVE CONTROL



SOUND POWERED TELEPHONE RISER DIAGRAM



REVISED AS BUILT, JUNE - 1965

THE METROPOLITAN CORPORATION OF GREATER WINNIPEG
WATERWORKS AND WASTE DISPOSAL DIVISION

METRO EAST PUMPING STATION AND RESERVOIR

CONTRACT A - PUMPING STATION ELECTRICAL-LIGHTING PLAN ABOVE ELEVATION 762.0 AND DETAILS

APPROVED: *James F. MacLaren*
DESIGN ENGINEER

APPROVED: *W. J. Samuella*
ENGINEER OF WATERWORKS

APPROVED: *W. J. Samuella*
DIRECTOR & CHIEF ENGINEER

DATE: JUNE 22, 1962
SCALE: 1/8" = 1'-0"
DWG. No. 32
OF 41

ME-39