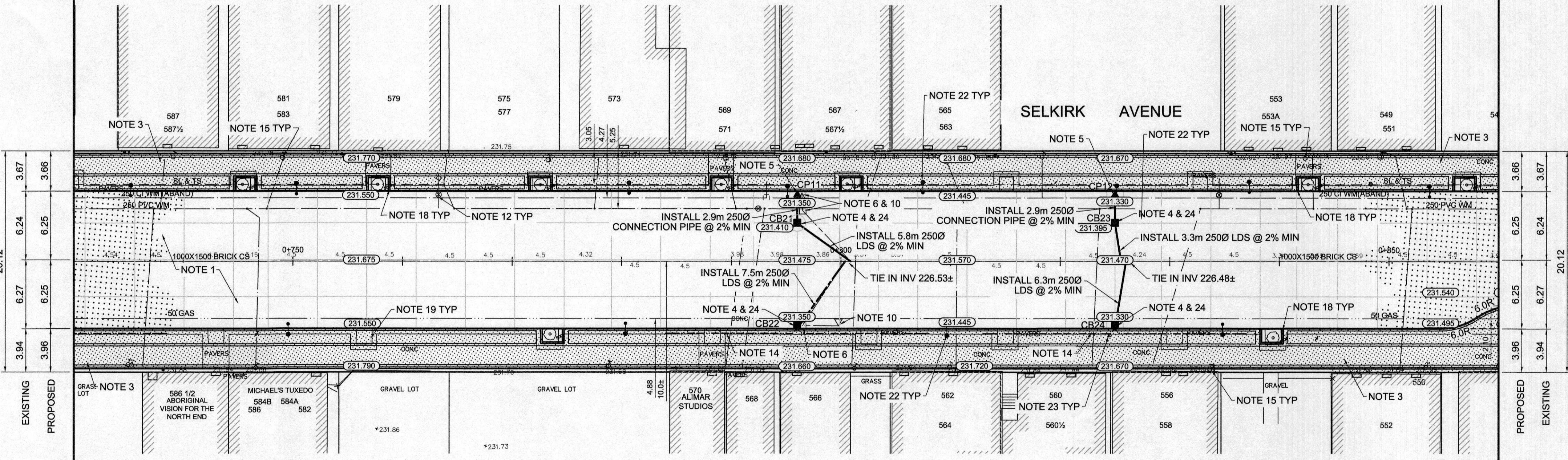
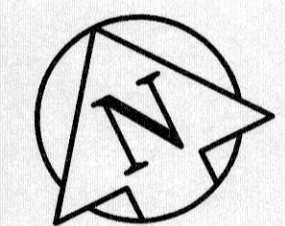


CB & CP TABLE - COMBINED SEWER				
DESCRIPTION	RIM ELEV.	INVERT		
		EAST	WEST	NORTH SOUTH
CB 21	231.410			229.810
CB 22	231.350	230.400	230.400	229.750
CB 23	231.395			229.795
CB 24	231.330	230.380	230.380	229.730
CP 11	231.350			230.350
CP 12	231.330			230.330

- REFERENCE NOTES**
- PAVEMENT DIMENSIONS ARE TO BACK OF CURB
 - BASELINE IS CENTRELINE OF RIGHT-OF-WAY
 - PROPERTY LINES OBTAINED FROM THE CITY OF WINNIPEG L.B.I.S., AND NO SCALE FACTOR WAS APPLIED
 - REFER TO AECOM FIELD BOOK NO. 4703
 - REFER TO DWGS CT-12 TO CT-14 FOR STREETSCAPING ELEMENTS.

- CONSTRUCTION NOTES**
- REMOVE EXISTING PAVEMENT, INCLUDING CONCRETE STREET CAR BEDDING AND WOOD TIES AND CONSTRUCT NEW 230mm PLAIN DOWELLED CONCRETE PAVEMENT c/w 180mm BARRIER CURB (SEPARATE)
 - CONSTRUCT NEW 200mm REINFORCED CONCRETE PAVEMENT
 - REMOVE EXISTING CONCRETE SIDEWALK/PAVER STONE SIDEWALK AND CONSTRUCT NEW 100mm SIDEWALK c/w PAVING STONE BAND (REFER TO DETAIL 1, CT-14)
 - CONTRACTOR TO SAW CUT AT PROPERTY LINE FULL LENGTH OF PROJECT
 - INSTALL NEW CURB AND GUTTER INLET c/w CATCHBASIN (SD024) ON SOUTH SIDE (AP-008 & AP-009), AND A NEW CATCHBASIN (SD-025) ON NORTH SIDE c/w SOLID COVER (AP-004 & AP-005). CONNECT NEW 250mm LEAD TO EXISTING COMBINED SEWER /MANHOLE
 - INSTALL NEW CURB AND GUTTER INLET c/w CATCHPIT(SD023) AND CONNECT NEW 250mm LEAD TO NEW CATCHBASIN
 - REMOVE EXISTING CATCHBASIN AND ABANDON EXISTING LEAD
 - REMOVE EXISTING FRAME AND COVER AND INSTALL NEW FRAME AND SOLID COVER (AP-004 & AP-005)
 - CONSTRUCT NEW MONOLITHIC CURB RAMP (10mm HT. INTEGRAL)
 - CONSTRUCT NEW MODIFIED BARRIER CURB (180mm HT. INTEGRAL)
 - REMOVE EXISTING CURB AND GUTTER INLET AND LEAD
 - ADJUST EXISTING CATCHBASIN/MANHOLE FRAME AND COVER
 - ADJUST EXISTING WATERMAIN VALVE BOX TO GRADE
 - INSTALL NEW 50mm CAST IRON RISER RING
 - INSTALL 150mm SUBDRAIN 12m ON EACH SIDE OF CATCHBASIN
 - ADJUST EXISTING CURB STOP TO GRADE
 - INSTALL NEW DETECTABLE SURFACE WARNING TILES
 - PLACE 50mm ASPHALT PAVEMENT (TYPE 1A)
 - CONSTRUCT CONCRETE TREE WELL (REFER TO CT-14)
 - REMOVE EXISTING TREE WELL
 - EXISTING TRAFFIC SIGNALS POLE TO BE RELOCATED (BY OTHERS)
 - EXISTING STREET LIGHT POLE TO BE RELOCATED (BY OTHERS)
 - EXISTING DECORATIVE STREET LIGHTS TO REMAIN INSTALL BRACKETS & DECORATIVE BASKETS (REFER TO CT-14)
 - REMOVE AND REINSTALL EXISTING PARKING PAY STATION (BY OTHERS)
 - INSTALL FLOW RESTRICTOR PIPE 150mm PVC SDR 35 CENTER RESTRICTOR PIPE IN CB LEAD (SD-122)
 - CONTRACTOR TO SALVAGE AND RE-INSTALL ALL GAS METER BOLLARDS DURING SIDEWALK REPLACEMENT

CAUTION : SHALLOW GAS SERVICES



AECOM
Certificate of Authorization
AECOM Canada Ltd.
No. 4671 Date: Feb 25/16
METRIC
WHOLE NUMBERS INDICATE MILLIMETRES
DECIMALIZED NUMBERS INDICATE METRES

150 mm W.M.	150 mm W.M.	150 mm W.M.	HYDRO	C PROFILE	EXISTING	PROPOSED
WATERMAIN	HYDRANT	VALVE	M.T.S.	NORTH/WEST GUTTER	---	---
LAND DRAINAGE SEWER	MANHOLE	CATCH BASIN	CONCRETE	SOUTH/EAST GUTTER	---	---
WASTEWATER SEWER	CATCH PIT	JUNCTIONS	ASPHALT	N/W PROPERTY LINE	---	---
		CULVERT	PROPERTY LINE	S/E PROPERTY LINE	---	---
			SURVEY BAR			
			ELEVATION			
			TREE			
			SIDEWALK RAMP			
			CONCRETE SIDEWALK			
			FENCE			
EXISTING	LEGEND - PLAN	PROPOSED	EXISTING	LEGEND - PLAN	PROPOSED	EXISTING

LOCATION APPROVED UNDERGROUND STRUCTURES
APPROVAL PERIOD 2016/02/17
DATE

NOTE:
LOCATION OF UNDERGROUND STRUCTURES AS SHOWN ARE BASED ON THE BEST INFORMATION AVAILABLE. BUT NO GUARANTEE IS GIVEN THAT ALL EXISTING UTILITIES ARE SHOWN OR THAT THE GIVEN LOCATIONS ARE EXACT. CONFIRMATION OF EXISTENCE AND EXACT LOCATION OF ALL SERVICES MUST BE OBTAINED FROM THE INDIVIDUAL UTILITIES BEFORE PROCEEDING WITH CONSTRUCTION.

B.M. 25 - 011 N.W. Cor. Arlington St. & Selkirk Ave. Tbl. in Conc. foundation of King Edward Community School 0.5m ELEV. 232.212 W. & 0.1 m below Tyndall Stone of most S.Ely. Cor.

AECOM

DESIGNED BY: KWR/BC
CHECKED BY: KWR
DRAWN BY: PP/PB
APPROVED BY: KWR

HOR. SCALE: 1:250
VERTICAL: 1:10

ISSUED FOR TENDER: 02/28/2016 KR
ISSUED FOR REVIEW: 01/29/2016 BC

NO. REVISIONS: 0
DATE: 12/03/2015
BY: KWR

THE CITY OF WINNIPEG
PUBLIC WORKS DEPARTMENT
ENGINEERING DIVISION

SELKIRK AVENUE PAVEMENT RECONSTRUCTION
ARLINGTON STREET TO SALTER STREET

PLAN/PROFILE
STATION 0+730 TO STATION 0+860

CITY DRAWING NUMBER: P-3471-07
SHEET 07 OF 20

CONSULTANT DRAWING NO. CT-07