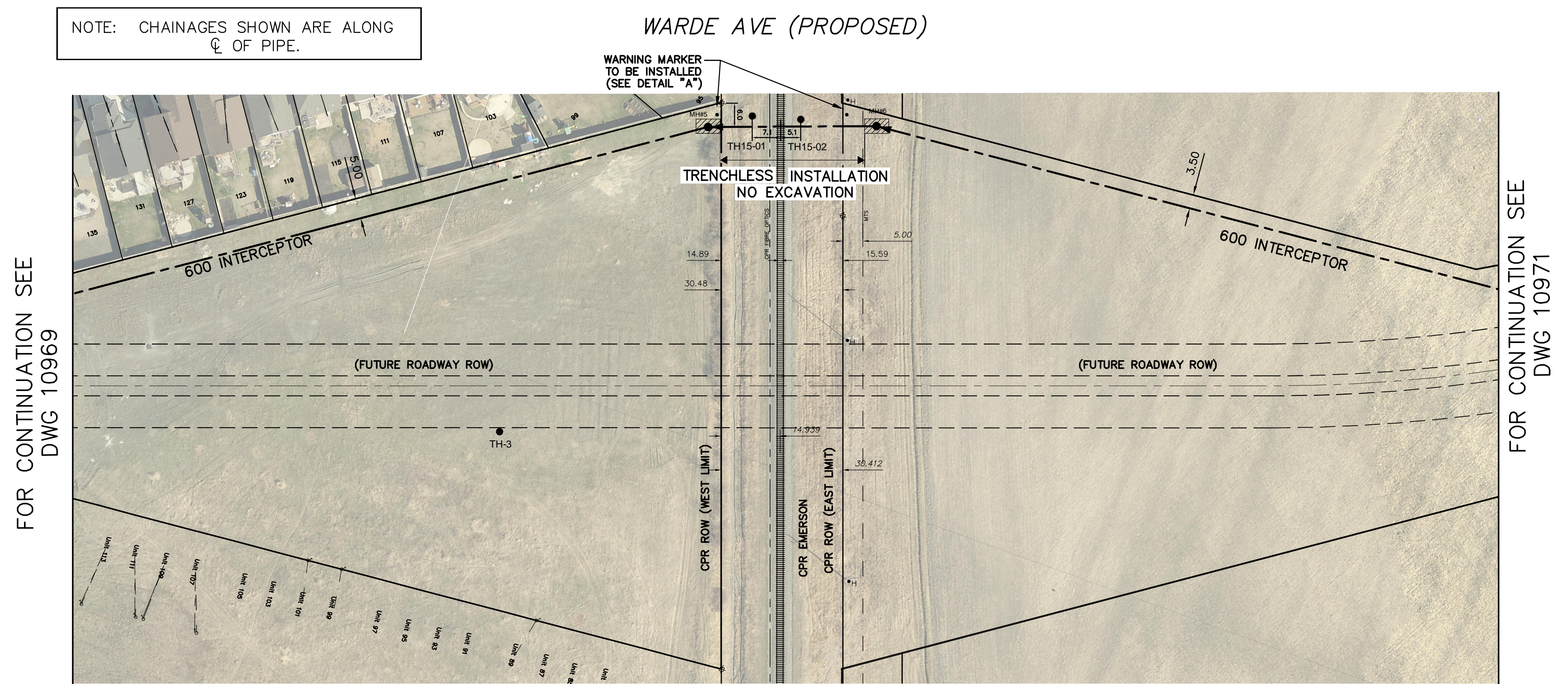
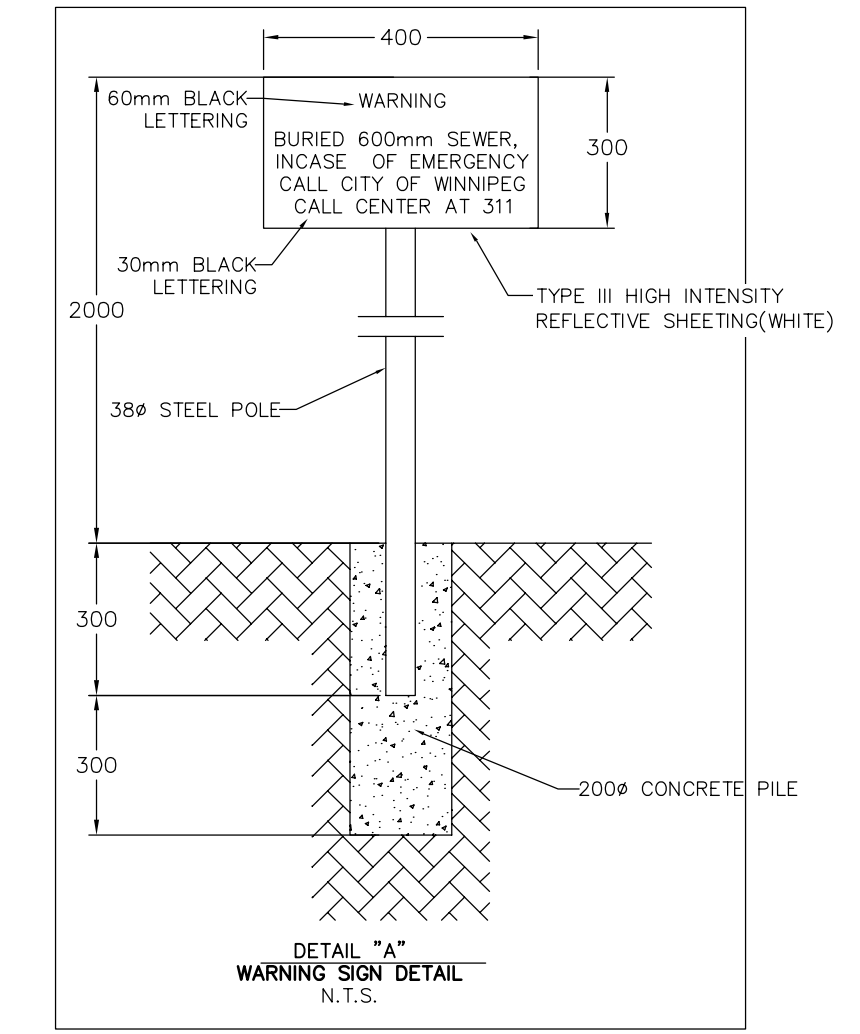


NOTE: CHAINAGES SHOWN ARE ALONG
 ☉ OF PIPE.



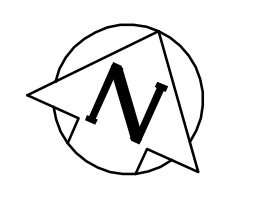
FOR CONTINUATION SEE
 DWG 10969

FOR CONTINUATION SEE
 DWG 10971



TEST HOLE COORDINATES:

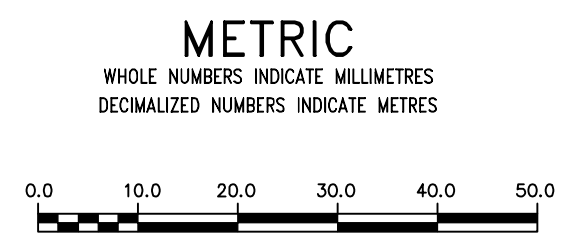
TH15-01:	E-639063.810
	N-5520850.580
TH15-02:	E-639075.530
	N-5520584.260



RAIL CROSSING NOTES:

RAILWAY MILEAGE - 5.91 EMERSON SUBDIVISION
 NOMINAL DIAMETER - 600mm
 OUTSIDE DIAMETER (O.D.) - 800mm
 WALL THICKNESS - 95mm
 PIPE MATERIAL - REINFORCED CONCRETE
 SPECIFICATION AND GRADE - ASTM C76 CLASS V
 JOINT TYPE - RUBBER GASKET BELL AND SPIGOT
 MATERIALS TO BE CONVEYED - SANITARY WASTEWATER
 MAXIMUM WORKING PRESSURE - GRAVITY
 DIRECTION OF FLOW - EAST TO WEST

- NOTES:
- 1) PIPE WILL BE JACK/BORED, AUGER HEAD COMPLETELY INSIDE PIPE WITH A MINIMUM OF 2 DIAMETER WIDTHS (TWO DIAMETER SOIL PLUG) FROM END OF PIPE. NO GROUND DISTURBANCE WITHIN CPR RIGHT OF WAY
 - 2) CROSSING TO BE DESIGNED, CONSTRUCTED, MAINTAINED IN ACCORDANCE WITH TC-E10 AND CP SPEC. NO. SP-TS-2.39.
 - 3) PIPE AND JOINTS TO WITHSTAND RAILWAY LOADING (COOPER E80 PLUS 50% IMPACT).



WARNING

IF POWER EQUIPMENT OR EXPLOSIVES ARE TO BE USED FOR EXCAVATION ON THIS PROJECT THE CONTRACTOR MUST:

- 1) NOTIFY THE GAS COMPANY OF THE PROPOSED LOCATION OF EXCAVATION.
- 2) TAKE PRECAUTION TO AVOID DAMAGE TO GAS COMPANY INSTALLATIONS.

SEE PROVINCIAL REGULATION 21072 FOR DETAILS

LOCATION APPROVED
 UNDERGROUND STRUCTURES

SUPV. U/G STRUCTURES COMMITTEE DATE

NOTE:
 LOCATION OF UNDERGROUND STRUCTURES AS SHOWN ARE BASED ON THE BEST INFORMATION AVAILABLE BUT NO GUARANTEE IS GIVEN THAT ALL EXISTING UTILITIES ARE SHOWN OR THAT THE GIVEN LOCATIONS ARE EXACT. CONFIRMATION OF EXISTENCE AND EXACT LOCATION OF ALL SERVICES MUST BE OBTAINED FROM THE INDIVIDUAL UTILITIES BEFORE PROCEEDING WITH CONSTRUCTION.

B.M. ELEV.	NO.	REVISIONS	DATE	BY
	2	REVISED NOTES & DETAILS	15/05/25	CN
	1	REVISED MISCELLANEOUS TEXT & OBJECTS	15/05/12	RS

DESIGNED BY	DB	CHECKED BY	KZ
DRAWN BY	RS	APPROVED BY	KZ
SCALE:	HORIZONTAL 1:750 VERTICAL 1:50		
DATE	2015 05 25	RELEASED FOR CONSTRUCTION	DATE
PLOT DATE:	2015 05 12		

ENGINEER'S SEAL

ORIGINAL SIGNED
 BY K.R. ZUREK
 15/05/12

CONSULTANT DRAWING NUMBER

THE CITY OF WINNIPEG
 WATER AND WASTE DEPARTMENT
 ENGINEERING DIVISION

2015 SEWER WORKS
 CONTRACT NO. 3
WARDE AVENUE INTERCEPTOR
 164 E OF E R OF SOUTHSIDE DRIVE
 195 E OF W R OF CPR ROW

SHEET 4 OF 5
 CITY DRAWING NUMBER
 10970