

- REFERENCE NOTES**
- A. PAVEMENT DIMENSIONS ARE TO BACK OF CURB
 - B. BASELINE IS CENTRE LINE RIGHT-OF-WAY
 - C. PROPERTY LINES OBTAINED FROM CITY OF WINNIPEG L.B.I.S., AND NO SCALE FACTOR WAS APPLIED
 - D. REFER TO AECOM FIELD BOOK NO. 4844

- CONSTRUCTION NOTES**
1. PLACE NEW TYPE 1A ASPHALTIC PAVEMENT (85mm AVG)
 2. REMOVE EXISTING CONCRETE PAVEMENT AND CONSTRUCT NEW 150mm REINFORCED CONCRETE PAVEMENT c/w 85mm AVG. TYPE 1A ASPHALTIC PAVEMENT
 3. REMOVE EXISTING CONCRETE PAVEMENT AND CONSTRUCT NEW 150mm REINFORCED CONCRETE PAVEMENT
 4. CONSTRUCT NEW RAMP CURB (10mm REVEAL HT, INTEGRAL)
 5. RENEW BARRIER CURB (100mm REVEAL HT, DOWELLED)
 6. INSTALL NEW CURB AND GUTTER INLET c/w CATCH PIT (SD-023) AND CONNECT TO EXISTING CATCH BASIN
 7. CONSTRUCT NEW MODIFIED BARRIER CURB (100mm REVEAL HT, INTEGRAL)
 8. RENEW EXISTING 100mm CONCRETE SIDEWALK
 9. ADJUST EXISTING WATER VALVE TO GRADE
 10. CONSTRUCT BARRIER CURB (100mm REVEAL HT, SEPARATE.)



METRIC
WHOLE NUMBERS INDICATE MILLIMETRES
DECIMALIZED NUMBERS INDICATE METRES

150 mm W.M.		150 mm W.M.		HYDRO		C PROFILE	
	WATERMAIN HYDRANT		150 mm W.M.		CONCRETE		NORTHWEST GUTTER
	VALVE		300mm L.D.S.		ASPHALT		SOUTHEAST GUTTER
	LAND DRAINAGE SEWER		250mm W.W.S.		PROPERTY LINE		NW PROPERTY LINE
	WASTEWATER SEWER		MANHOLE		SURVEY BAR		S/E PROPERTY LINE
	CATCH BASIN		CATCH PIT		ELEVATION (35.750)		
	JUNCTIONS		TREE		SIDEWALK RAMP		
	CULVERT		CONCRETE SIDEWALK		FENCE		
	GAS						
	EXISTING LEGEND - PLAN		PROPOSED		EXISTING LEGEND - PLAN		PROPOSED

LOCATION APPROVED UNDERGROUND STRUCTURES

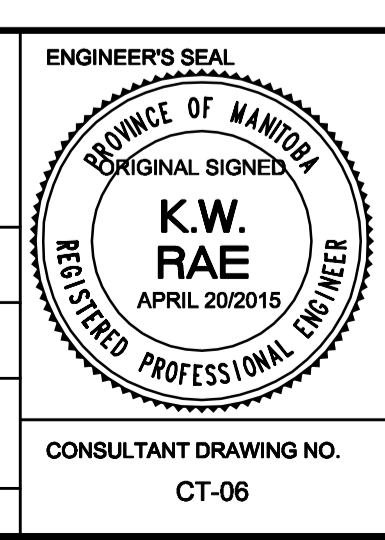
SUPV. U/G STRUCTURES COMMITTEE DATE

NOTE:
LOCATION OF UNDERGROUND STRUCTURES AS SHOWN ARE BASED ON THE BEST INFORMATION AVAILABLE BUT NO GUARANTEE IS GIVEN THAT ALL EXISTING UTILITIES ARE SHOWN OR THAT THE GIVEN LOCATIONS ARE EXACT. CONFIRMATION OF EXISTENCE AND EXACT LOCATION OF ALL SERVICES MUST BE OBTAINED FROM THE INDIVIDUAL UTILITIES BEFORE PROCEEDING WITH CONSTRUCTION.

B.M. 83R585
ELEV. 238.985

N. side Saskatchewan Ave. @ Hamilton Ave. TOL on top of 0.05 m dia. x 2.4m iron pipe, 3.7m E. of W.L. Hamilton Ave. produced from the S. & 1.1m S. of road Sly. railway track on N. side of Saskatchewan Ave.

NO.	REVISIONS	DATE	BY
1	REVISED TO RECON.	04/28/2015	BC
0	ISSUED FOR TENDER	04/21/2015	BC
A	ISSUED FOR REVIEW	04/14/2015	BC



DESIGNED BY: BC/SS
CHECKED BY: KWR
DRAWN BY: PB/RT
APPROVED BY:

HOR. SCALE: 1:250
VERTICAL: 1:10

RELEASED FOR CONSTRUCTION BY: BK
ORIGINAL SIGNED: APRIL 20/2015

CONSULTANT DRAWING NO. CT-06

THE CITY OF WINNIPEG
PUBLIC WORKS DEPARTMENT
ENGINEERING DIVISION

2015 LOCAL STREET RENEWAL PROGRAM

DOHANEY CRESCENT: ACHESON DRIVE TO HAMILTON AVENUE
CONCRETE RECONSTRUCTION
STATION 0+220 TO HAMILTON AVENUE

CITY DRAWING NUMBER SHEET 06 OF 20