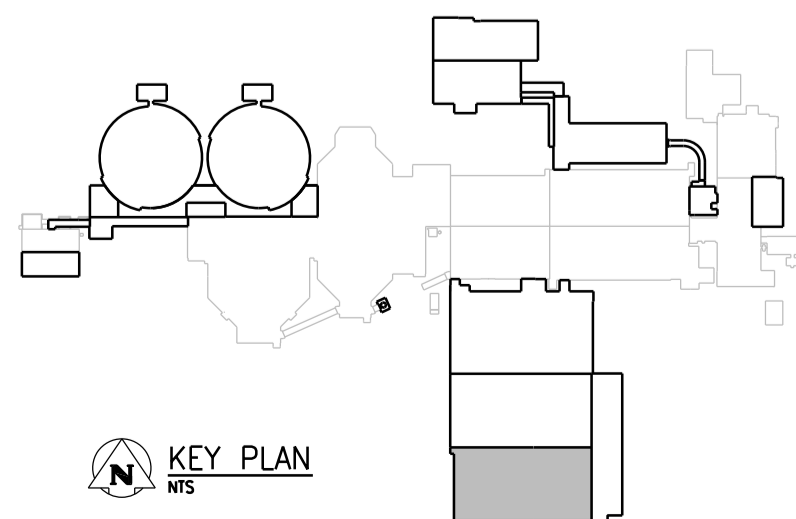


PART PILING PLAN
1:125

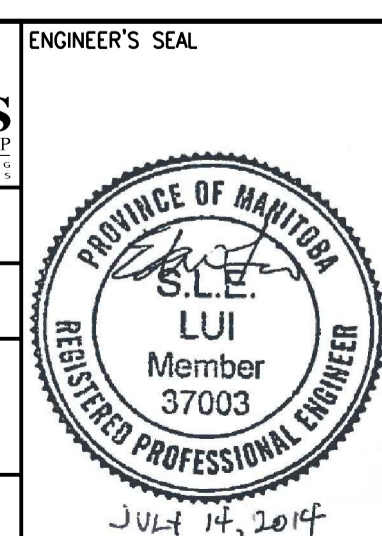
NOTES:

- REFER TO DWG 1-0102-SGAD-A001 FOR GENERAL NOTES.
- REFER TO DWG 1-0102-SGAD-A002 FOR OVERALL SITE PLAN AND SEQUENCING.
- PILE DIAMETER (D) = 400mm
- PILE CUT-OFF ELEVATION = 225.525 UNLESS NOTED OTHERWISE.
- ESTIMATED PILE REFUSAL EL 210.000



NO.	REVISIONS	DATE	DESIGN	CHECK
01	ISSUED FOR ADDENDUM NO. 1	07/2014	G.O. B.W.	
00	ISSUED FOR TENDER	06/2014	G.O. B.W.	

CH2MHILL		KCS GROUP	
DESIGNED BY: E. LUI	CHECKED BY: B. WILLIAMSON	DATE: 2014/06/27	
DRAWN BY: G. OMORI	APPROVED BY: E. LUI	CONSULTANT NO.: 474248	
SCALE: 1:125	ISSUED FOR CONSTRUCTION BY:	DATE:	



THE CITY OF WINNIPEG
Winnipeg WATER AND WASTE DEPARTMENT

SOUTH END WATER POLLUTION CONTROL CENTRE
SEWPPC UPGRADING/EXPANSION PROJECT
STRUCTURAL
BIOREACTORS/BLOWER BUILDING
PART PILING PLAN (3)

CITY DRAWING NUMBER: 1-0102-SFDW-R004
SHEET: 001
REV: 01
SIZE: A1