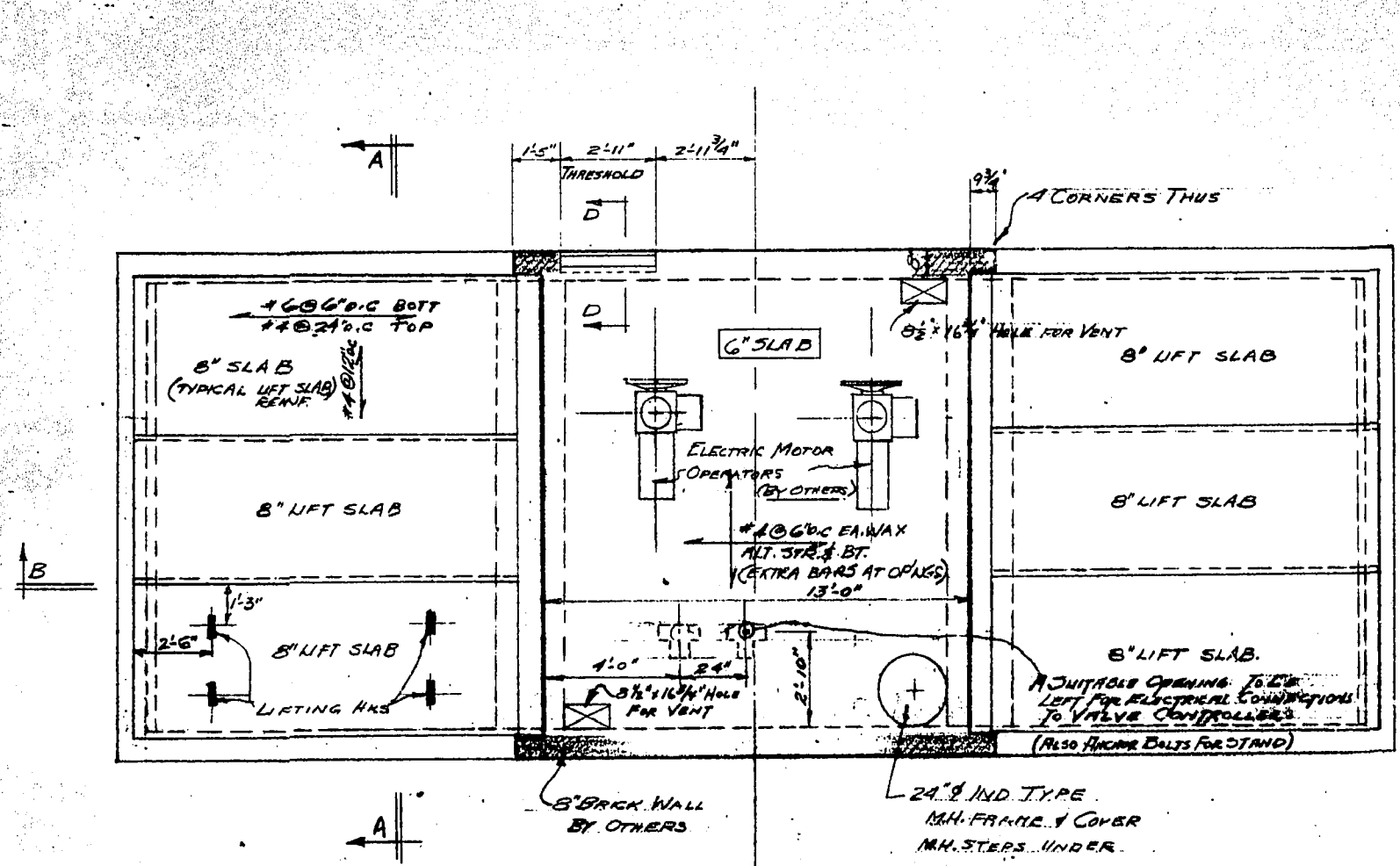
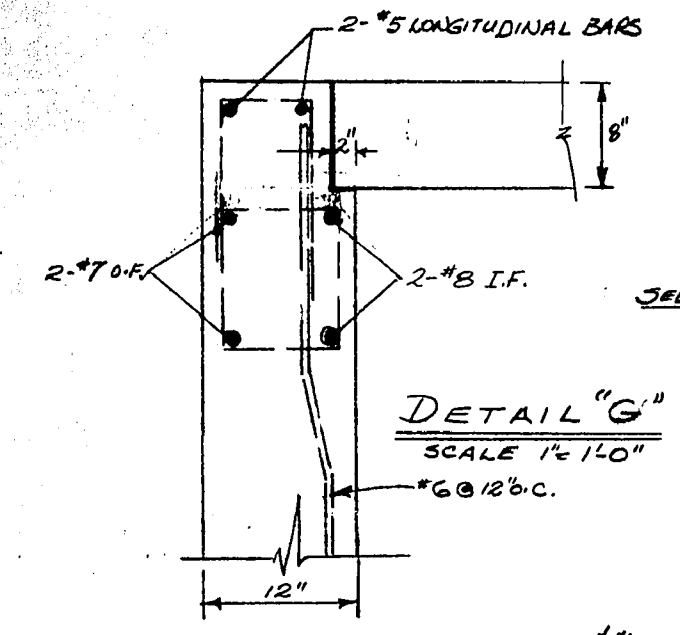


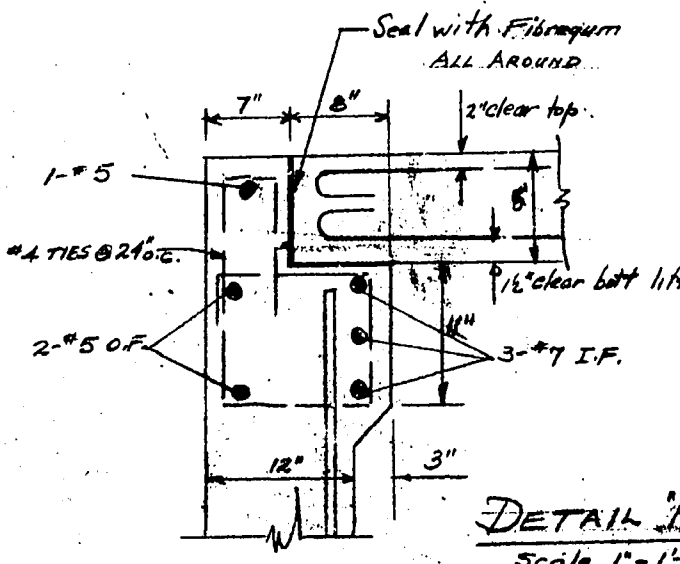
Bid Opportunity 864-2012
Appendix D – Additional Drawings
(For Information Only)



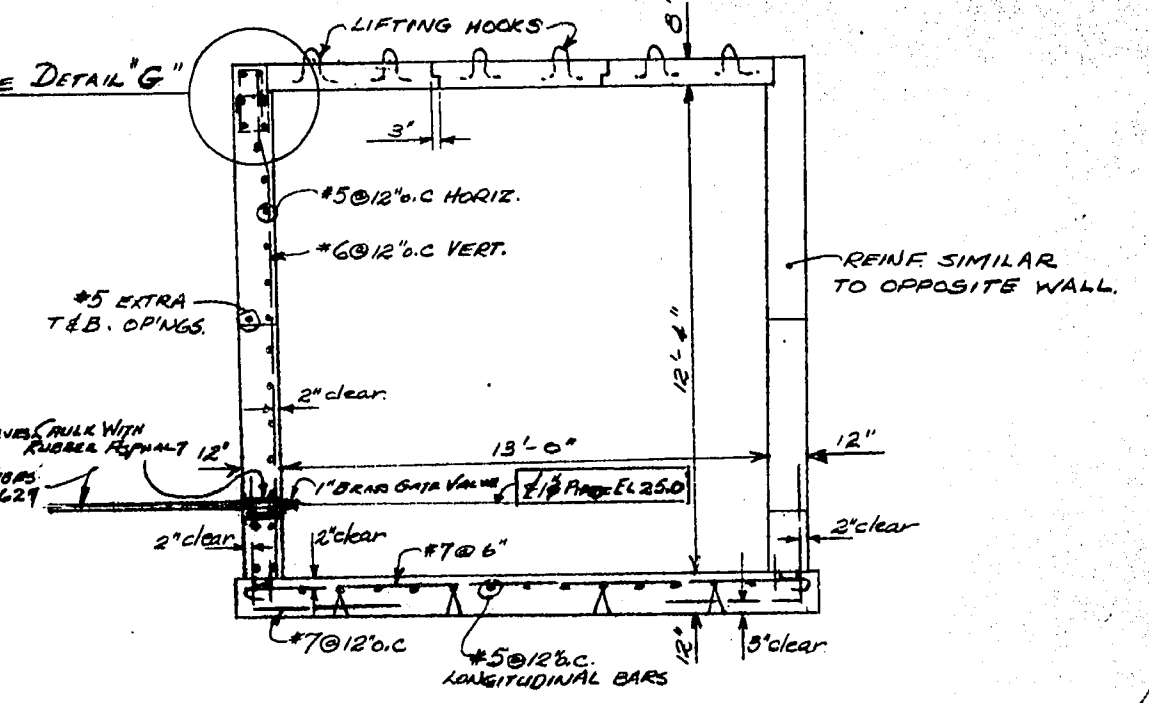
PLAN OF TOP SLABS



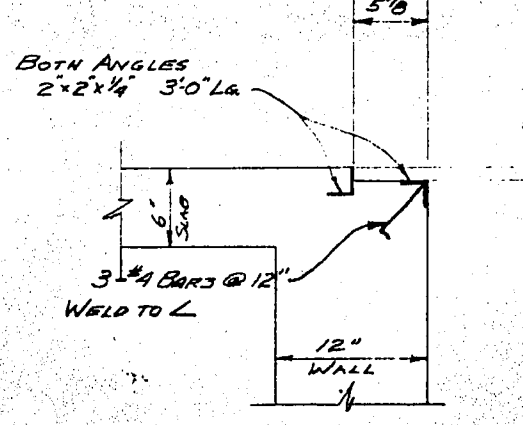
DETAIL 'G'
SCALE 1/2"=1'-0"



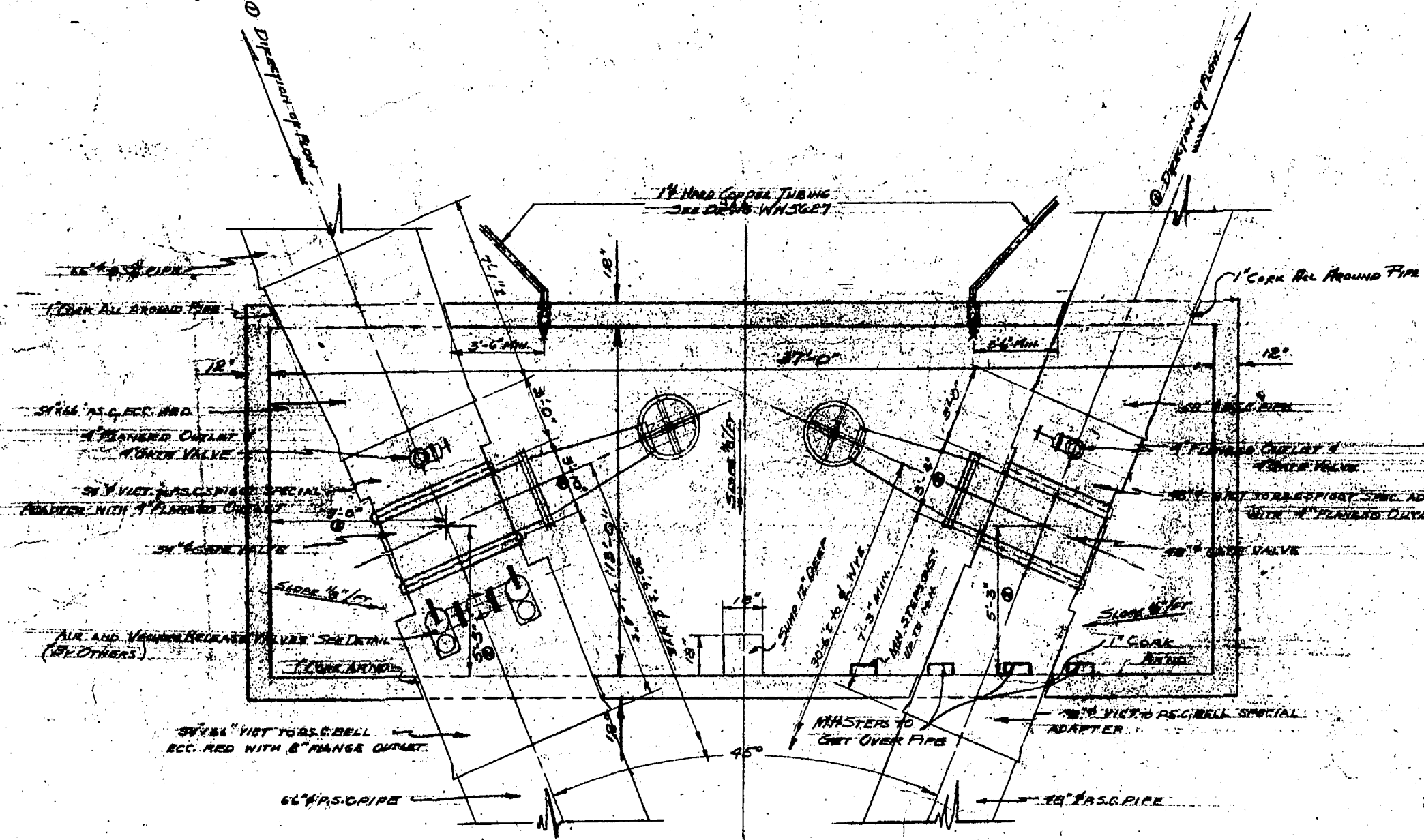
DETAIL 'H'
Scale 1/2"=1'-0"



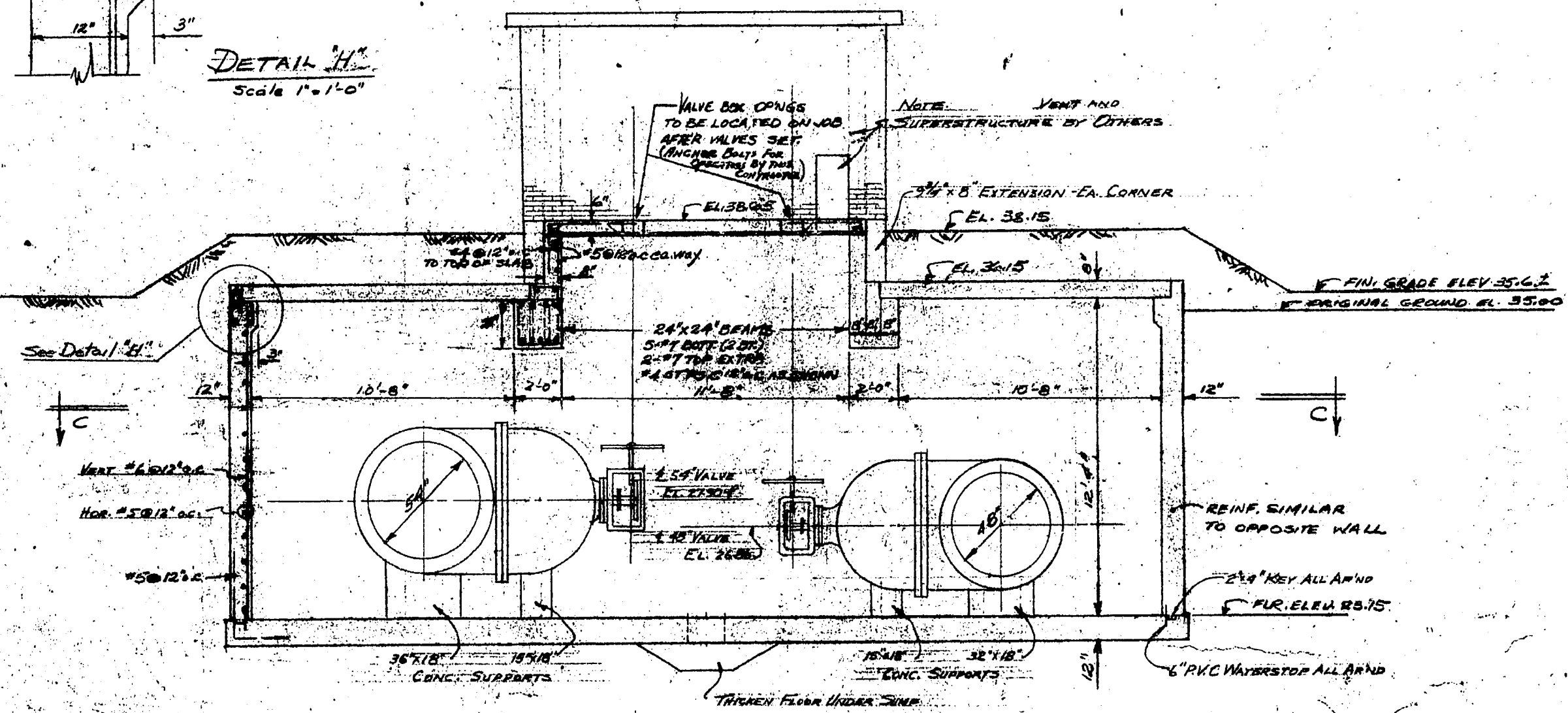
SECTION A-A



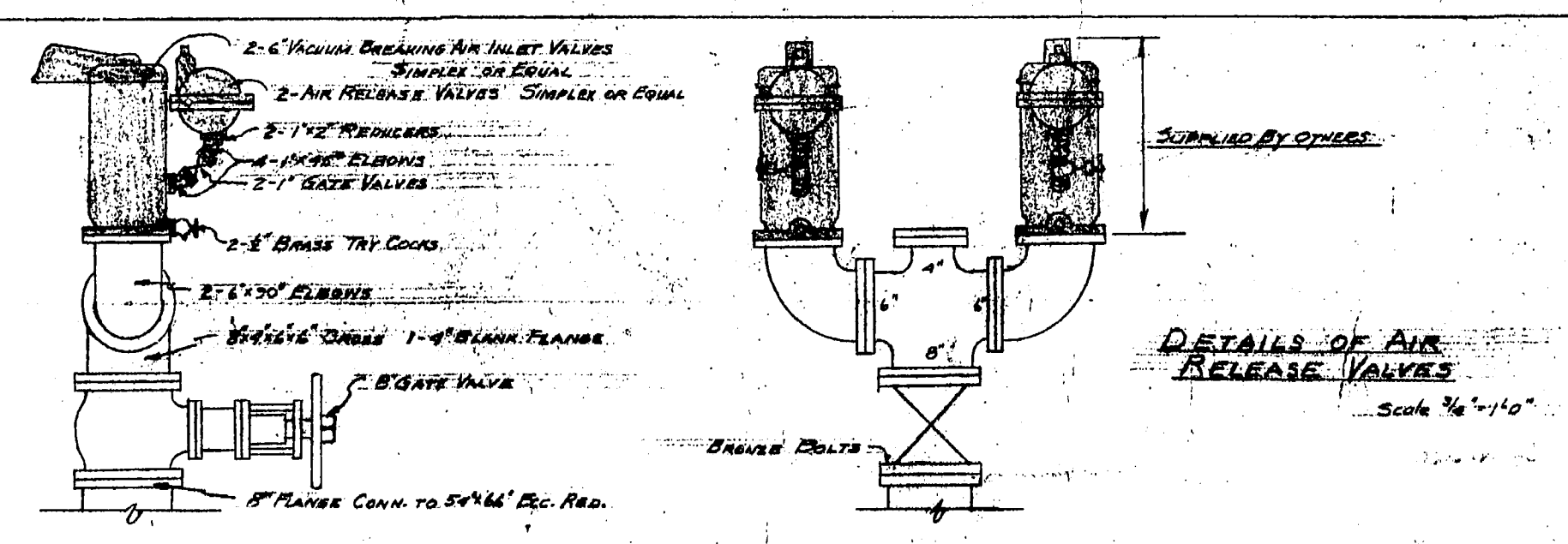
DETAIL OF THRESHOLD
SECTION 'D-D'
1/2"=1'-0"



SECTION C-C



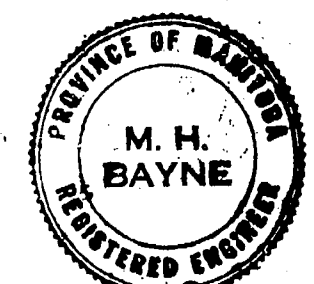
SECTION B-B



DETAILS OF AIR RELEASE VALVES
Scale 3/4"=1'-0"

NO.	BY	DATE	REVISIONS
1	M.H.		DIRECTION OF FLOW REVERSED
2	M.H.		DIRECTION OF FLOW REVERSED

FOR INFORMATION ONLY

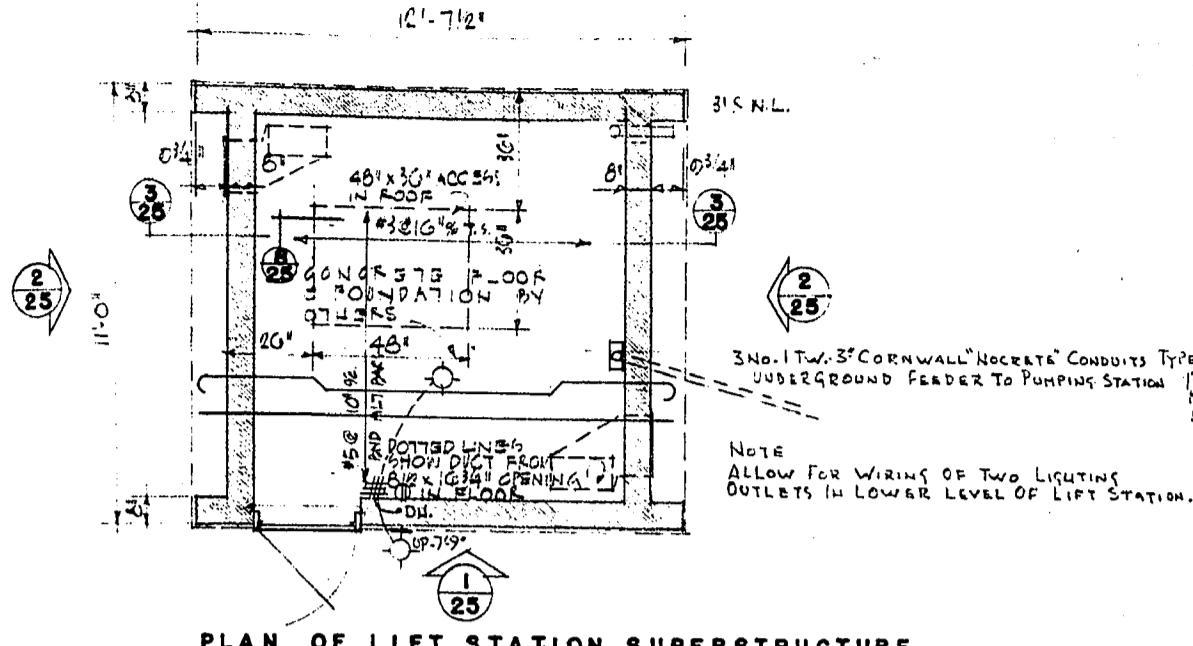


WILKES AVE. RESERVOIRS 1+2
CITY OF WINNIPEG
ENGINEERING DEPARTMENT
M. D. HANNET, CITY ENGINEER
J. S. STROUBAL, DEPUTY CITY ENGINEER

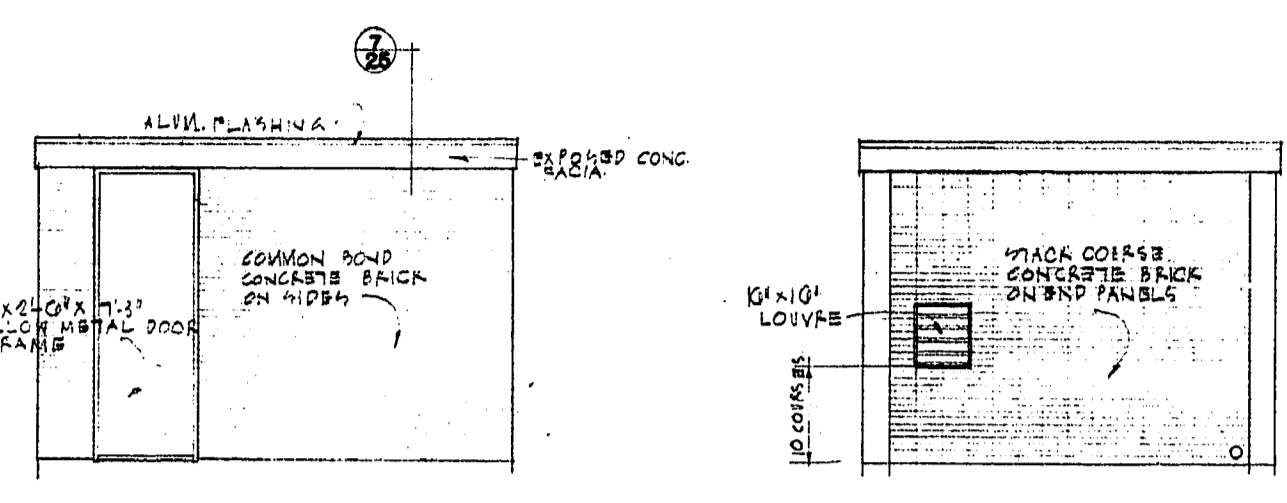
DATE: OCT. 31, 1958
DRAWN BY: R.A.
CHECKED BY: J.S.
APPROVED BY: J.S.

SCALE: 1/2"=1'-0"

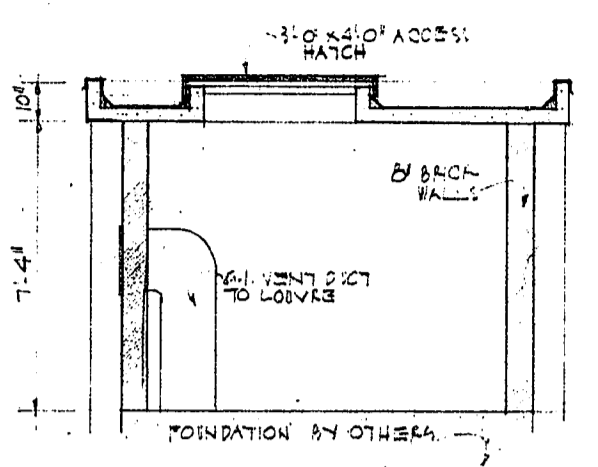
FOR INFORMATION ONLY



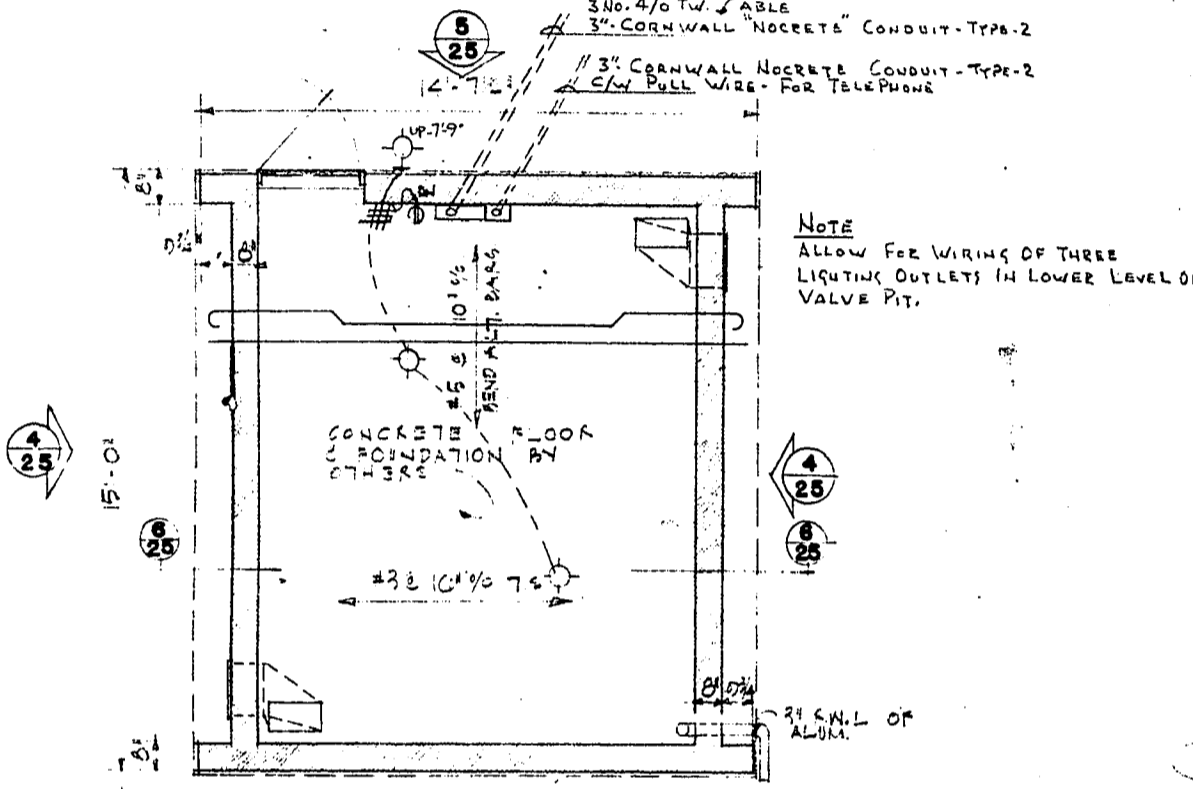
PLAN OF LIFT STATION SUPERSTRUCTURE



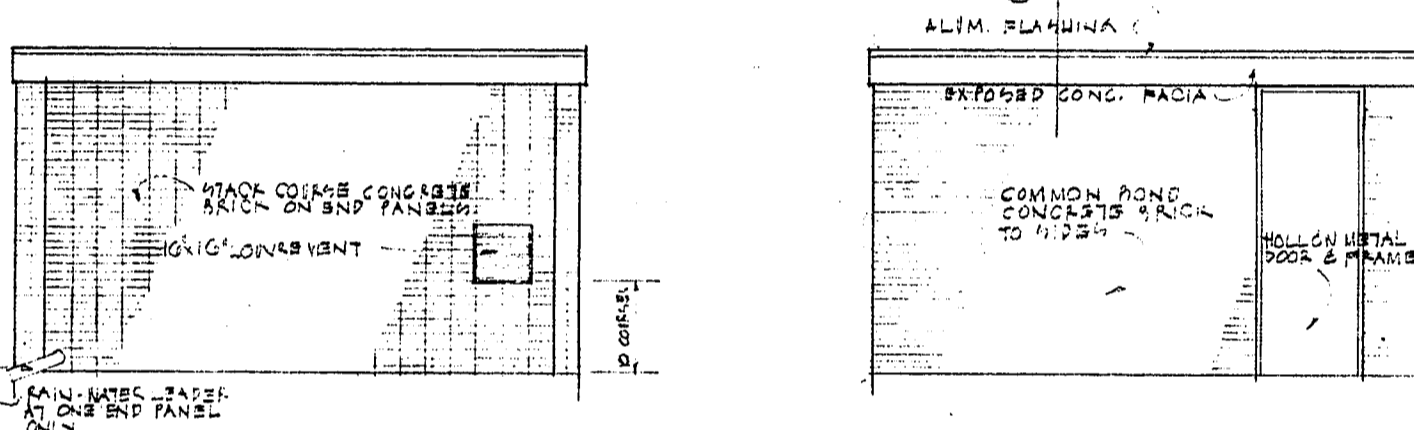
ELEVATIONS



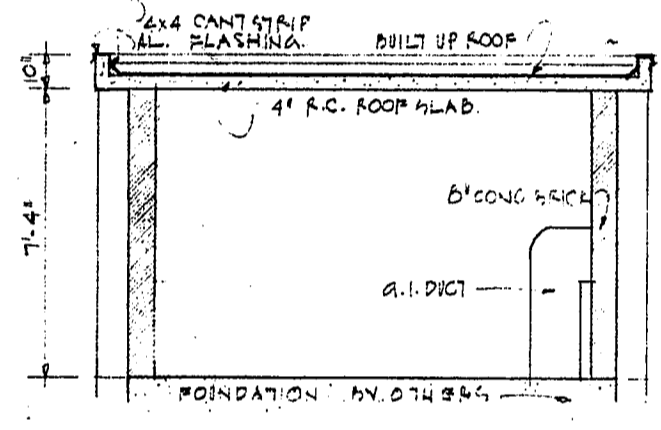
SECTION



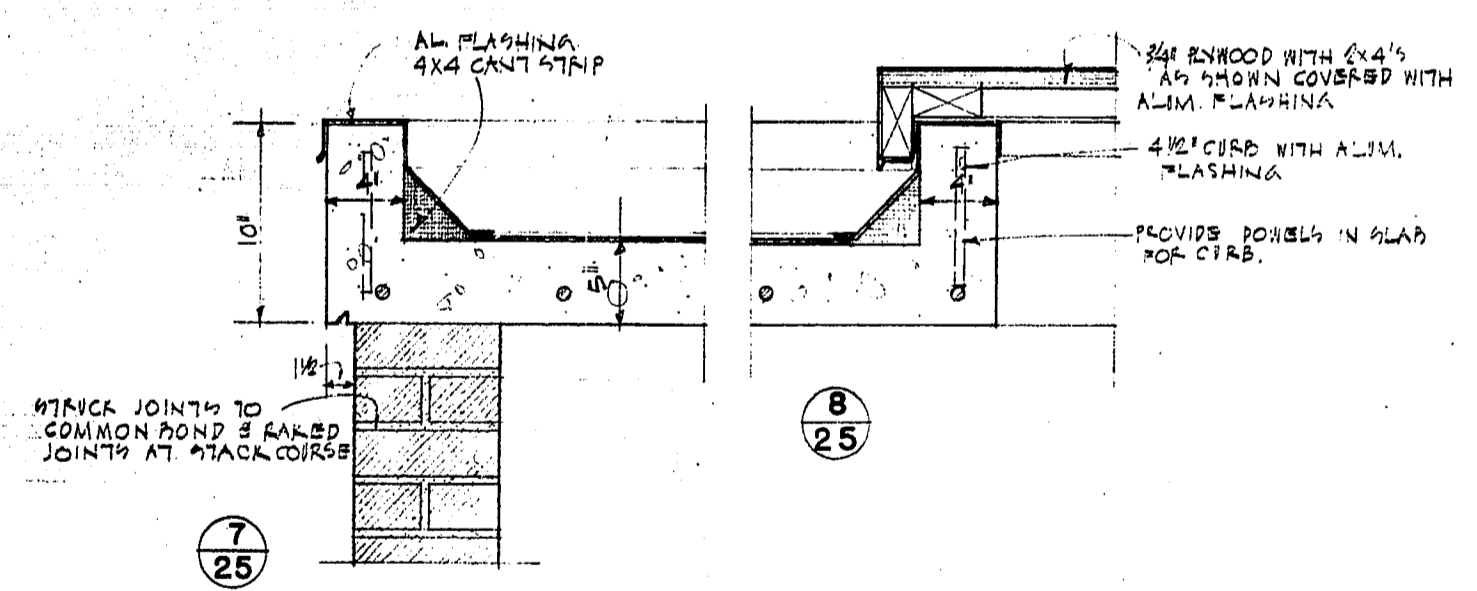
PLAN OF VALVE PIT SUPERSTRUCTURE



ELEVATIONS

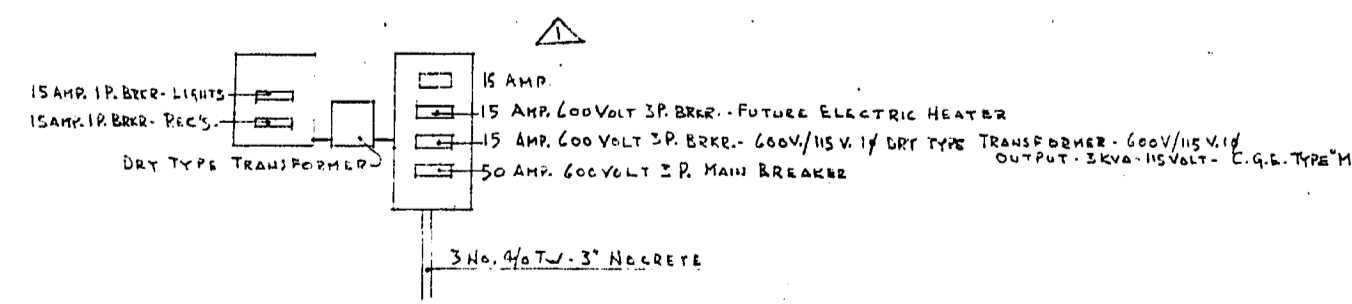


SECTION

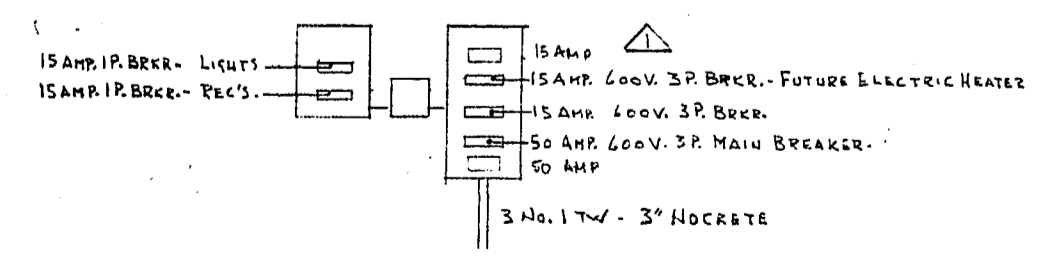


DETAILS

DETAILS



9 DISTRIBUTION VALVE PIT



10 DISTRIBUTION LIFT STATION

No.	REF.	DESCRIPTION	DATE	CHK.
1	APP. 1	AS LISTED	27.11.59	

REVISIONS (READ UP)

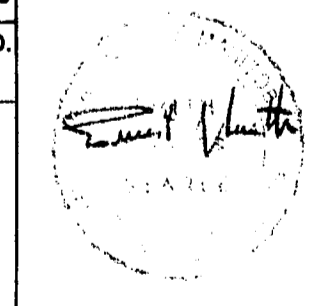
DRAWN BY B. T.

CHECKED BY [Signature]

APPROVED BY [Signature]

NOV. 10, 1959

CITY FILE NO. WH5622 - 25



SMITH CARTER SEARLE ASSOCIATES ARCHITECTS AND ENGINEERS

WINNIPEG AND BRANDON

CITY OF WINNIPEG

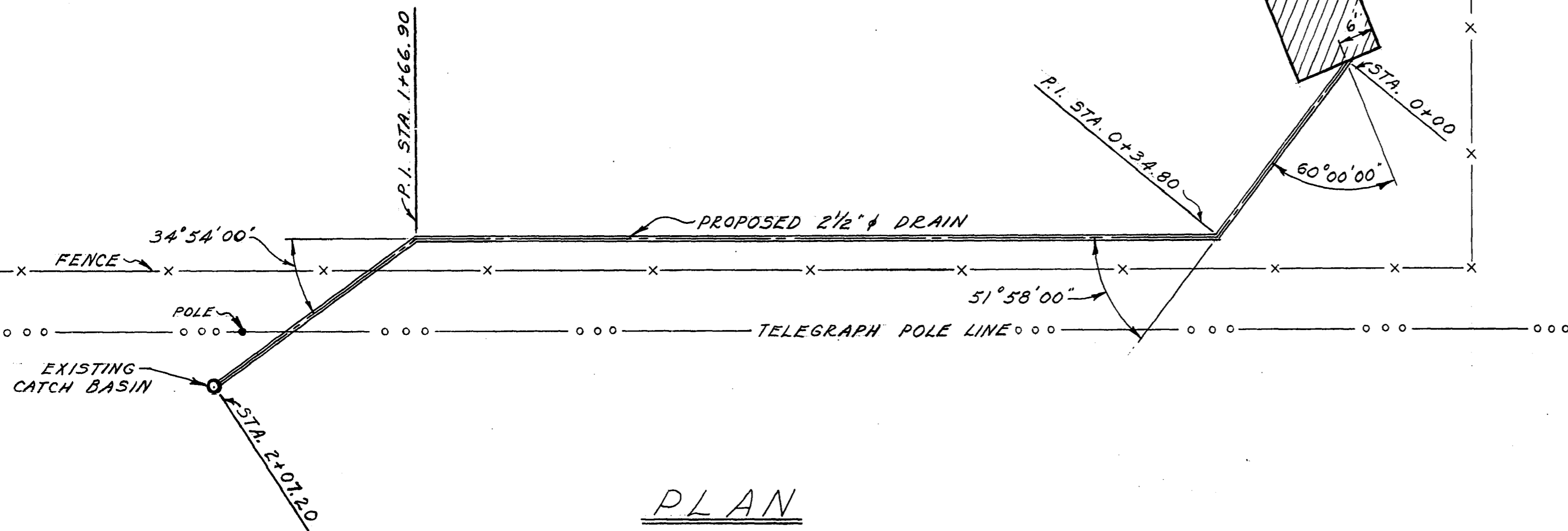
WILKES AVE. PUMPING STATION

WINNIPEG, MANITOBA

LIFT STATION & VALVE PIT 'B' SUPERSTRUCTURE DETAILS

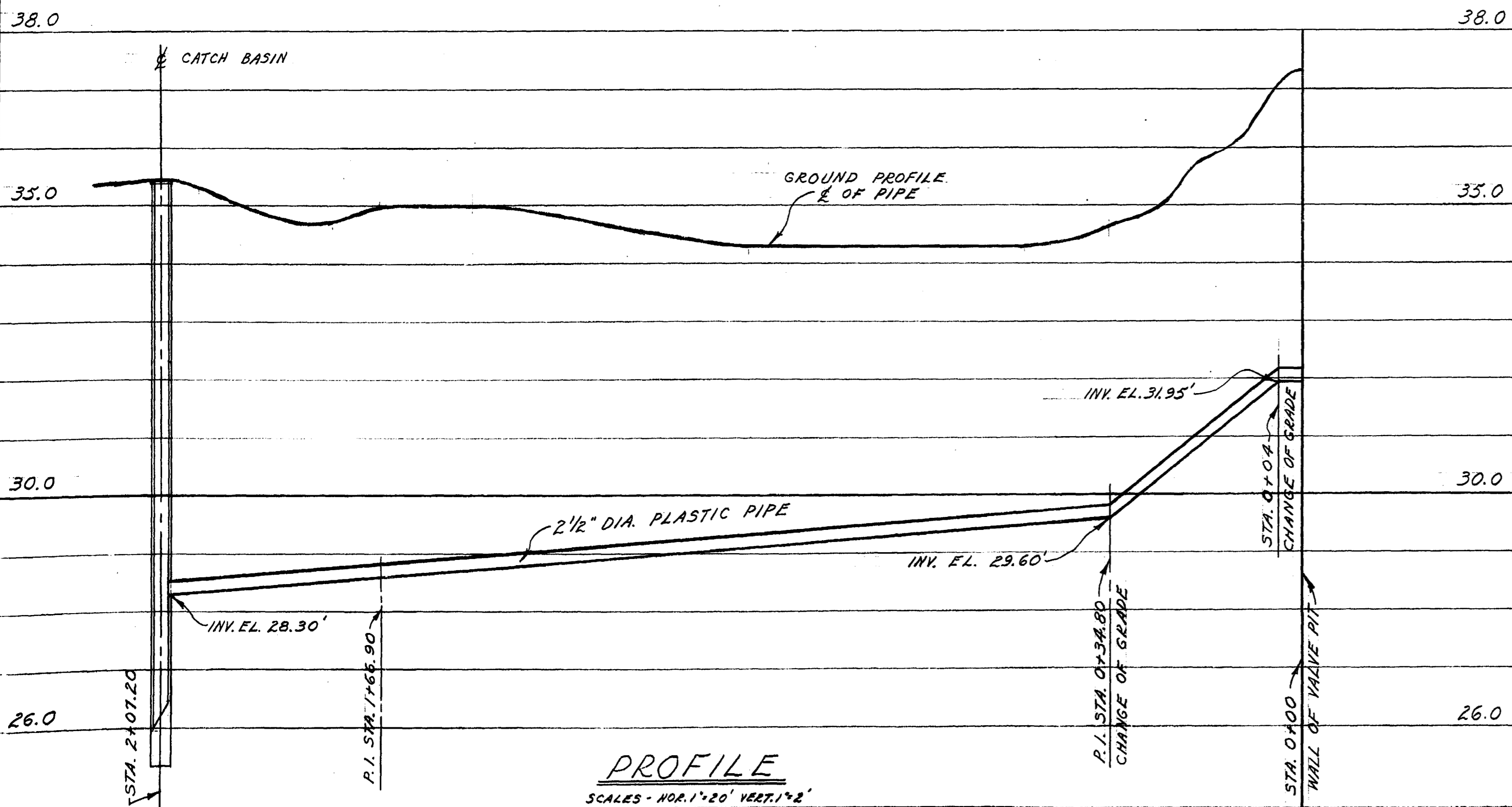
1/4" = 1' - 0"

FILE NUMBER 59151 SHEET NUMBER 25



PLAN

SCALE - 1" = 20'



PROFILE

SCALE - HOR. 1" = 20' VERT. 1" = 2'

FOR INFORMATION ONLY

THE METROPOLITAN CORPORATION OF GREATER WINNIPEG
 WATERWORKS & WASTE DISPOSAL DIVISION
 WATERWORKS DEPT.

HURST RESERVOIR
 2 1/2" DIA. DRAIN FOR
 VALVE CHAMBER "B"

APPROVED BY	DESIGNED BY G.A.C.	CHECKED BY	DRAWING NO.
	DRAWN BY S.K.	DATE 1 OCT. 63	C-478
CHIEF ENGINEER	SCALES AS NOTED		