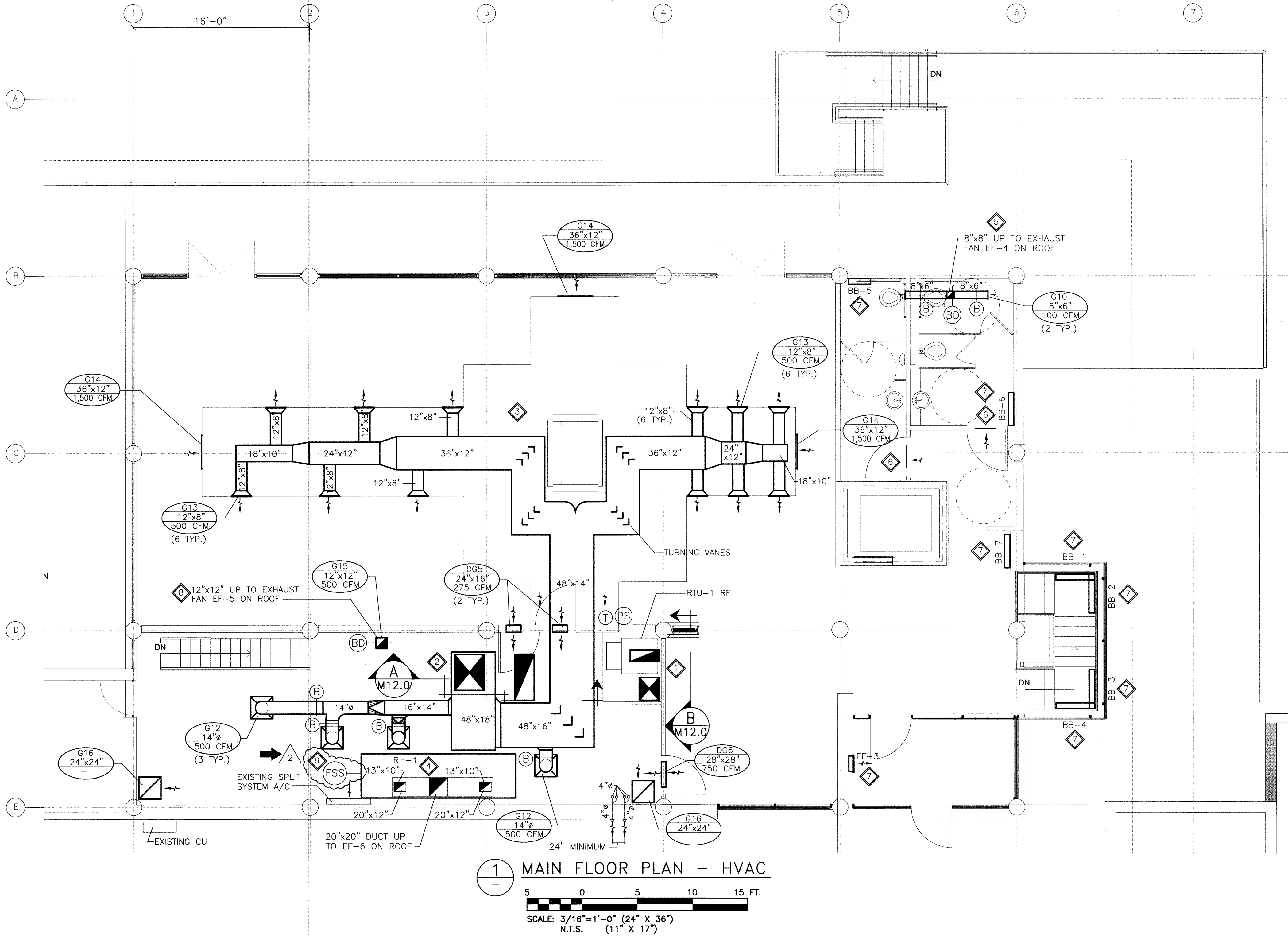


File Name: P:\Projects\2011\11-0902-04\Doc Control\ToBeIssued\DWG\11-0902-04_M8.0-Rev 2.dwg - Tab: 24x36-11-0902-04M08 Plotted By: Dberocha 12/03/07 [Wed 8:36am]
24"x36" PLOT SCALE: 1:1



ELECTRIC HEATER SCHEDULE						
TAG	DESCRIPTION	HEATING OUTPUT (kW)	AIR FLOW (CFM)	SIZE (INCHES)		
				L	H	D
FF-1	FORCE FLOW HEATER	4.8	160	16 1/8	22 1/16	5 10/16
FF-2	FORCE FLOW HEATER	2	160	16 1/8	22 1/16	5 10/16
FF-3	FORCE FLOW HEATER	4.8	160	16 1/8	22 1/16	5 10/16
BB-1	BASEBOARD HEATER	1.5	-	35 1/2	6	5 3/4
BB-2	BASEBOARD HEATER	1.5	-	35 1/2	6	5 3/4
BB-3	BASEBOARD HEATER	1.5	-	35 1/2	6	5 3/4
BB-4	BASEBOARD HEATER	1.5	-	35 1/2	6	5 3/4
BB-5	BASEBOARD HEATER	1.0	-	23 5/8	6	5 3/4
BB-6	BASEBOARD HEATER	1.5	-	35 1/2	6	5 3/4
BB-7	BASEBOARD HEATER	1.5	-	35 1/2	6	5 3/4
BB-8	BASEBOARD HEATER	1.0	-	23 5/8	6	5 3/4
BB-9	BASEBOARD HEATER	1.5	-	35 1/2	6	5 3/4

GENERAL NOTES:

1. PERFORM WORK IN ACCORDANCE WITH ALL APPLICABLE CODES AND REGULATIONS.
2. REVIEW EQUIPMENT LOCATIONS WITH CONSULTANT PRIOR TO INSTALLATION.
3. EQUIPMENT LOCATIONS, DUCT AND PIPE ROUTING INDICATED ON THE DRAWINGS IS APPROXIMATE ONLY. CONFIRM IN THE FIELD. REROUTE DUCTWORK AND PIPING AS REQUIRED TO ELIMINATE FIELD INTERFERENCES, WITH BUILDING STRUCTURES, ELECTRICAL, ETC.. CONFIRM CHANGES WITH CONSULTANT. CO-ORDINATE WORK WITH ALL SUBTRADES. WHERE DIMENSIONS ARE INDICATED FOR PIPING, DUCTWORK, DUCT SIZES, EQUIPMENT SIZES, ETC. THESE ARE FOR BIDDING PURPOSES ONLY. THE CONTRACTOR IS RESPONSIBLE TO VERIFY ALL DIMENSIONS IN THE FIELD PRIOR TO ORDERING EQUIPMENT AND COMMENCING INSTALLATION WITHOUT EXTRA CHARGES TO THE PROJECT. THE CONTRACTOR IS RESPONSIBLE TO ENSURE ALL EQUIPMENT, DUCTWORK AND PIPING FITS IN THE SPACE AVAILABLE AND TO MAINTAIN THE GENERAL DESIGN INTENT FOR THE SYSTEMS.
4. CONFORM TO SMACNA STANDARDS FOR SUPPLY AND INSTALLATION OF DUCTWORK.
5. SEAL ALL WALL AND ROOF PENETRATIONS AND DUCTWORK WATER AND AIR TIGHT.
6. PROVIDE ALL WALL AND ROOF PENETRATIONS AND CURBS.
7. DESIGN, SUPPLY, AND INSTALL NATURAL GAS PIPING TO NEW ROOFTOP UNITS (RTU-1 AND RTU-2) AS PER CAN/CGA B149.1-M95.
8. ALL NEW AND MODIFIED EXPOSED DUCTWORK SHALL BE PAINTED AS PER INTERIOR DESIGNER'S INSTRUCTIONS.
9. CONTACT STRUCTURAL CONSULTANT TO CONFIRM LOCATION OF ROOF PENETRATIONS PRIOR TO CUTTING ROOF.
10. CONTROLS CONTRACTOR TO PROVIDE HVAC CONTROLS AS PER DRAWING M18.0.

KEY NOTES:

1. SUPPLY AND INSTALL ALL ASSOCIATED SUPPLY AND RETURN DUCTWORK FOR NEW ROOFTOP UNIT RTU-1. MAIN DUCTS TO BASEMENT TO BE CONCEALED BY ARCHITECTURAL ENCLOSURE (BY OTHERS).
2. SUPPLY AND INSTALL ALL ASSOCIATED SUPPLY AND RETURN DUCTWORK AND ACCESSORIES FOR NEW ROOFTOP UNIT RTU-2. RETURN AIR DUCT TO RTU-2 IS OPEN-ENDED IN KITCHEN CEILING PLENUM.
3. NEW ARCHITECTURAL BULKHEAD (BY OTHERS) TO ENCLOSE SUPPLY DUCTWORK TO DINING ROOM AND ACT AS RETURN AIR PLENUM TO MAIN RETURN AIR DUCT. CO-ORDINATE WITH OTHERS TO MAINTAIN UNOBSTRUCTED RETURN AIR PATH TO KITCHEN CEILING PLENUM. CLEARANCES BETWEEN BULKHEAD INTERIOR AND UNDERSLAB OF ROOF SHALL BE 17" MINIMUM. REFER TO DETAIL 1 ON DRAWING M12.0.
4. SUPPLY AND INSTALL NEW RANGE HOOD RH-1 AND ALL ASSOCIATED DUCTWORK. DUCTWORK CONNECTING TO NEW GREASE EXHAUST HOOD EF-6 SHALL BE 16 GAUGE BLACK WELDED STEEL WITH 1 HOUR FIRE RATING, COMPLETE WITH 3/4 HOUR FIRE RATE ACCESS DOORS. DUCTWORK SHALL COMPLY WITH NFPA 96.
5. SUPPLY AND INSTALL ALL DUCTWORK ASSOCIATED WITH NEW EXHAUST FAN EF-4. EXTERNALLY INSULATE DUCTWORK FROM ROOF DOWN TO BACKDRAFT DAMPER. DUCTWORK IN WASHROOM TO BE CONCEALED BY ARCHITECTURAL BULKHEAD, PROVIDE ACCESS DOORS TO ACCESS DAMPERS AND FOR PROVIDING MAINTENANCE.
6. CO-ORDINATE WITH STRUCTURAL TRADES TO UNDERCUT WASHROOM DOORS BY 1" TO ALLOW FOR MAKEUP AIR INTO WASHROOMS.
7. ELECTRICAL CONTRACTOR TO SUPPLY AND INSTALL NEW ELECTRIC BASEBOARD HEATERS BB-1, BB-2, BB-3, BB-4, BB-5, BB-6 AND BB-7 AND NEW ELECTRIC FORCE FLOW HEATER FF-3. LOCATIONS ARE SHOWN DIAGRAMMATICALLY AND TO BE CO-ORDINATED WITH ELECTRICAL CONTRACTOR.
8. SUPPLY AND INSTALL ALL DUCTWORK ASSOCIATED WITH NEW DISHWASHER EXHAUST FAN EF-5. DUCTWORK TO RUN THROUGH EXISTING ROOF PENETRATION, SEAL WATER AND AIR TIGHT. EXTERNALLY INSULATE DUCTWORK FROM ROOF DOWN TO BACKDRAFT DAMPER.
9. FIRE SUPPRESSION SYSTEM SHALL BE PROVIDED BY FUTURE TENANT TO MEET FIRE SUPPRESSION REQUIREMENTS OF FUTURE KITCHEN EQUIPMENT.

THIS DRAWING MUST NOT BE SCALED.

THE GENERAL CONTRACTOR SHALL VERIFY ALL DIMENSIONS, DATINGS, AND LEVELS PRIOR TO COMMENCEMENT OF WORK. ALL ERRORS AND OMISSIONS TO BE REPORTED TO NUMBER TEN ARCHITECTURAL GROUP BEFORE PROCEEDING.

VARIATIONS AND MODIFICATIONS TO WORK SHOWN ON THESE DRAWINGS SHALL NOT BE CARRIED OUT WITHOUT WRITTEN PERMISSION OF NUMBER TEN ARCHITECTURAL GROUP.

THIS DRAWING IS THE EXCLUSIVE PROPERTY OF NUMBER TEN ARCHITECTURAL GROUP AND THE COPYRIGHT IN THE SAME BEING RESERVED TO THEM. IT MAY BE REPRODUCED ONLY WITH THE PERMISSION OF NUMBER TEN ARCHITECTURAL GROUP, IN WHICH CASE THE REPRODUCTION MUST BEAR THEIR NAME.

REVISED/ ISSUED/ PLOTTED	DATE
Rev. 2 - RE-ISSUED FOR TENDER	MARCH 07/2012
Rev. 1 - ISSUED FOR TENDER	FEBRUARY 03/2012
Rev. 0 - ISSUED FOR TENDER	NOVEMBER 21/2011

LEGEND:

- NEW EQUIPMENT/DUCTWORK
- EXISTING EQUIPMENT OR DUCTWORK
- CONTROL WIRING
- EF - EXHAUST FAN
- B - BOILER
- RAD - RADIATOR
- FF - FORCE FLOW HEATER
- BB - BASEBOARD HEATER
- RH - RANGE HOOD
- CU - OUTDOOR CONDENSING UNIT
- A/C - AIR CONDITIONER
- RTU-1 RF - RETURN AIR FAN FOR ROOFTOP UNIT
- Supply AIR
- Return AIR
- Exhaust AIR
- B - BALANCE DAMPER
- T - THERMOSTAT
- BD - BACKDRAFT DAMPER
- G1 - GRILLE NO.
- 8" - NECK SIZE
- 160 CFM - AIR FLOW
- EXTERNALLY INSULATED DUCTWORK
- FSS - FIRE SUPPRESSION SYSTEM
- PS - PRESSURE SENSOR

SCALE VERIFIED BY:

numberTEN
architectural group

winnipeg MB regina SK victoria BC
204 942.0981 306 721.1501 250 360.2106

architecture • interior design • graphic design

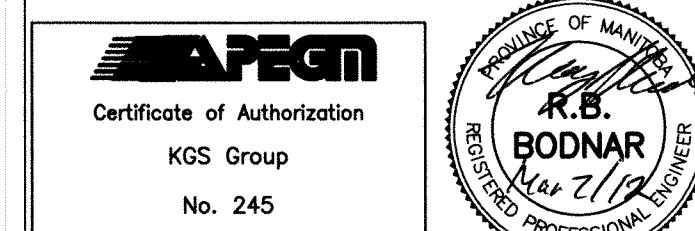
PEGUIS PAVILION
UPGRADES & ENTRY ADDITION
BIDDING #913-2011

project
MAIN FLOOR PLAN
HVAC - NEW

sheet title

KGS GROUP | CONSULTING ENGINEERS

consultant



seal
drawn by: VJH
checked by: RBB
project no. 2011026

scale: AS NOTED
date: March 6, 2012
sheet no. M8.0