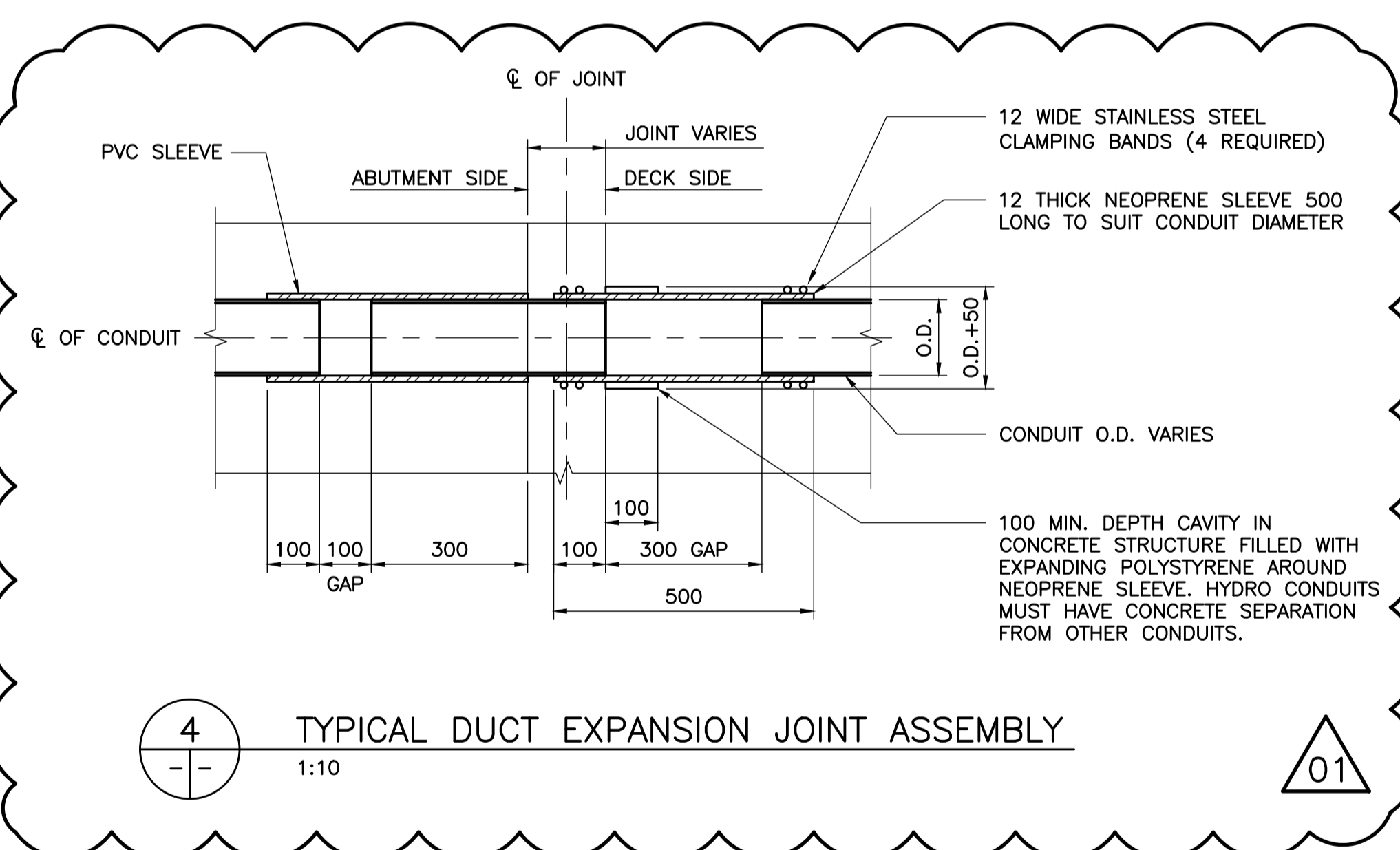
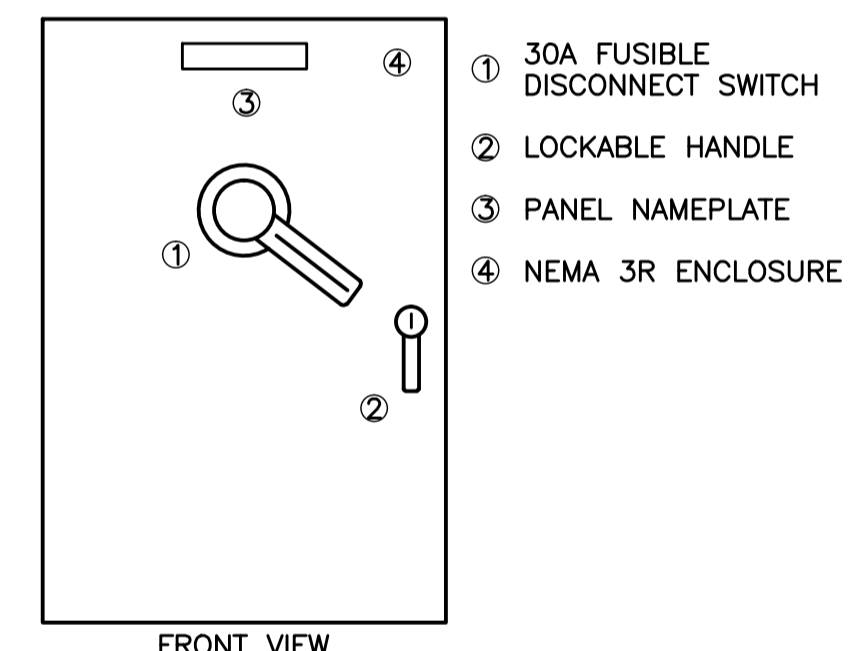
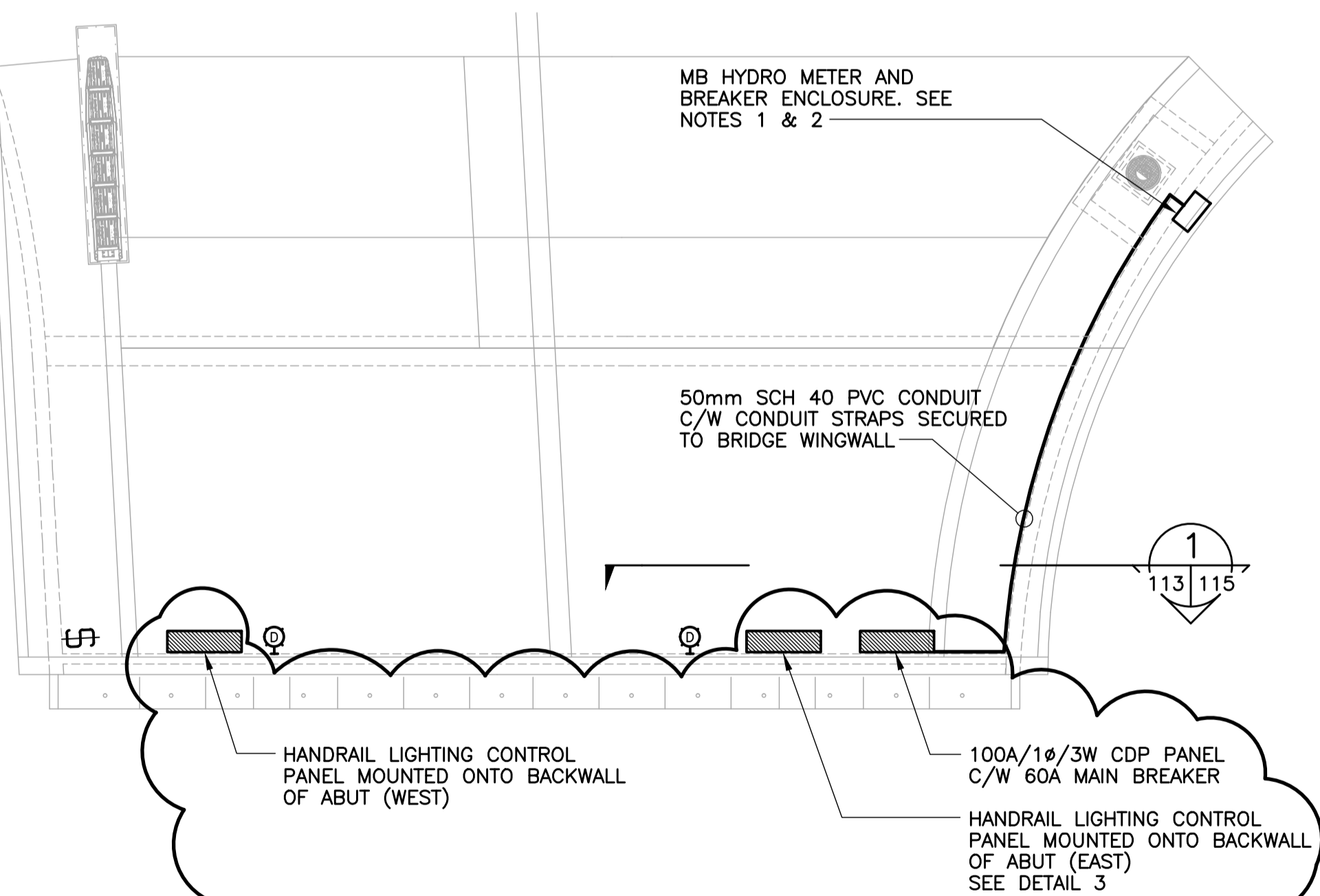
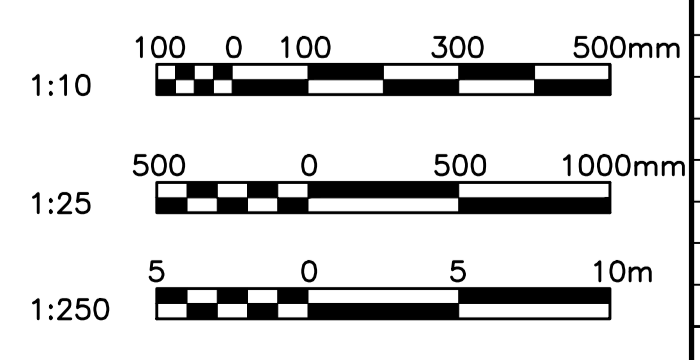


- ELECTRICAL DRAWING NOTES:**
1. MANITOBA HYDRO TO PROVIDE 120/240V-1Ø SERVICE TO EXISTING METER AND BREAKER ENCLOSURE. SEE DETAIL 2 FOR LOCATION. TO BE COORDINATED WITH MANITOBA HYDRO.
 2. CONTRACTOR TO UPGRADE METER AND FEED TO CURRENT CEC, AND REQUIREMENTS OF LOCAL AUTHORITIES HAVING JURISDICTION, CO-ORDINATE REQUIREMENTS.
 3. USE NEW MATERIAL ONLY UNLESS OTHERWISE NOTED ON DRAWINGS AND SPECIFICATIONS.
 4. ALL PLACEMENTS FOR STREET LIGHTING TO BE AS SHOWN. MANITOBA HYDRO CONNECTION TO BE REDONE AT LOCATIONS NEAR THAT OF EXISTING BRIDGE FOR SUPPLY POINTS FOR NEW STREET LIGHTING.
 5. CONTRACTOR TO USE APPROVED HEATING METHODS WHEN BENDING CONDUITS. OPEN FLAMES ARE NOT TO BE USED. CONDUIT SHALL NOT BE PITTED OR BURNED AT ANY POINT OF INSTALLATION.

- SYMBOL LEGEND:**
- Ⓢ LIGHT SWITCH
 - Ⓢ-○ POLE MOUNTED STREET LIGHT
 - Ⓢ-○ WALL MOUNTED LUMINAIRE
 - Ⓢ-○ HANDRAIL LED LUMINAIRE
 - Ⓢ-○ JUNCTION BOX
 - Ⓢ-○ HANDRAIL LIGHTING POWER SUPPLY

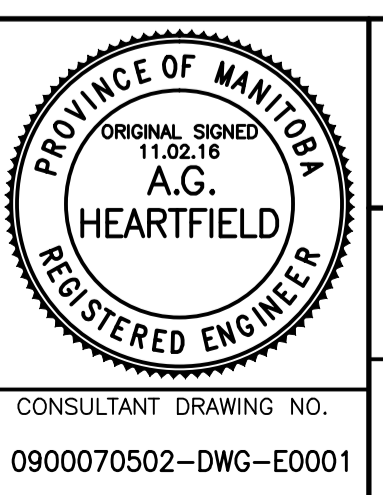


NOTE: ALL SURFACE MOUNTED PANELS SHALL BE MOUNTED ON CANTRUSS CHANNEL C/W SPRING NUT MOUNTING HARDWARE.



B.M. ELEV.	F.B.	DATE	BY
		11.03.07	A.H.
		11.02.18	A.H.
		11.01.11	

WARDROP A TETRA TECH COMPANY	
DESIGNED BY: H.P.C.C.	CHECKED BY: A.H.
DRAWN BY: H.P.C.C.	APPROVED BY: R.H.W.
HOR. SCALE: AS NOTED	RELEASED FOR CONSTRUCTION DATE: 11.02.16
VERTICAL: AS NOTED	ORIGINAL SIGNED: 11.02.16
DATE: 11.01.11	MATT GIBSETTI, P. ENG. BRIDGE PROJECTS ENGINEER



THE CITY OF WINNIPEG
PUBLIC WORKS DEPARTMENT
TRANSPORTATION ENGINEERING DIVISION

OSBORNE STREET BRIDGE
REHABILITATION & RELATED WORKS

BRIDGE LIGHTING AND DETAILS

CITY DRAWING NUMBER
B109-11-118
SHEET 113 OF 131

No. 195 Date: April 30, 2011

113