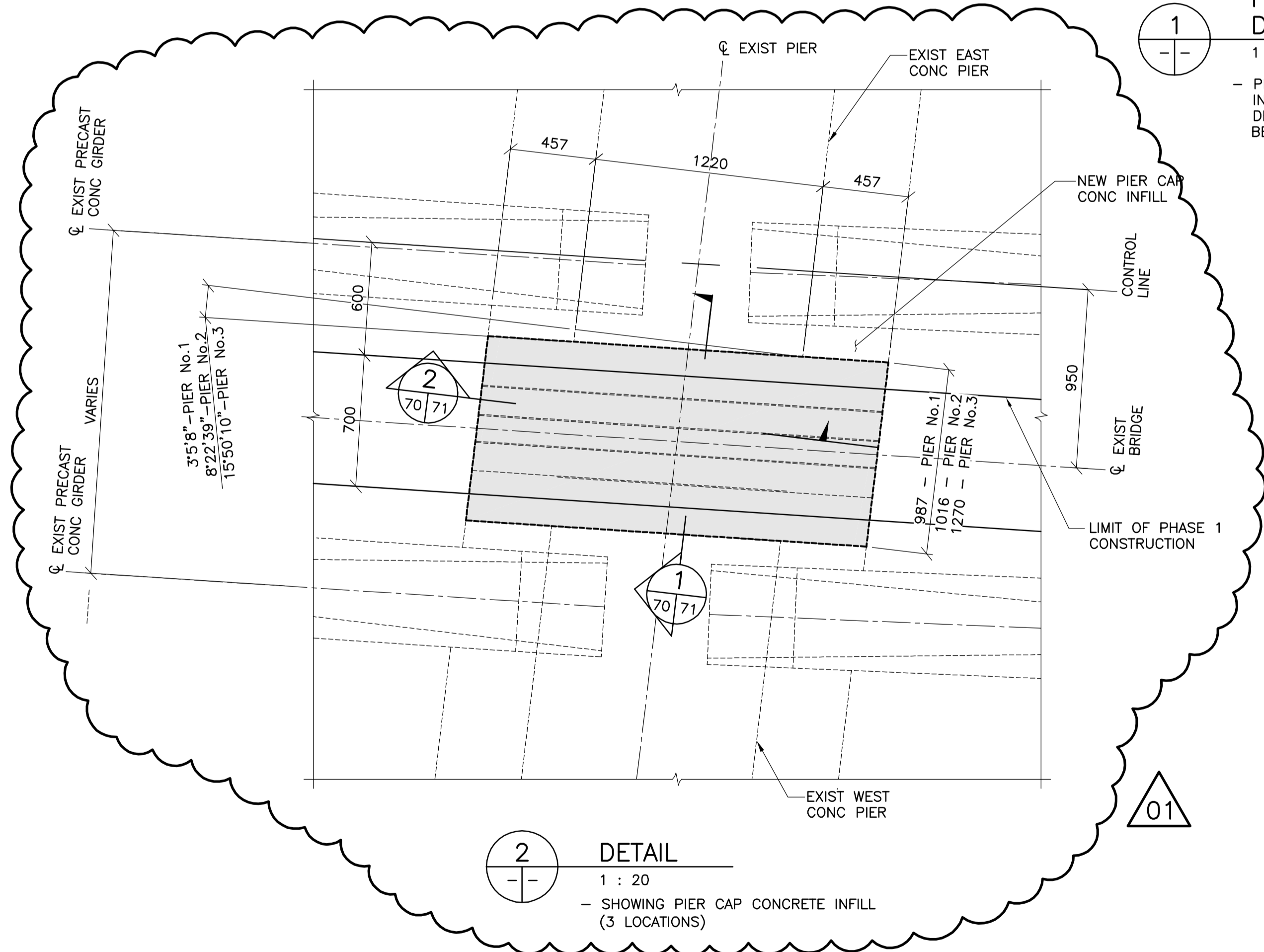


**PLAN - PIER CAP AND INTERMEDIATE DIAPHRAGM CONCRETE INFILL**

1 : 250

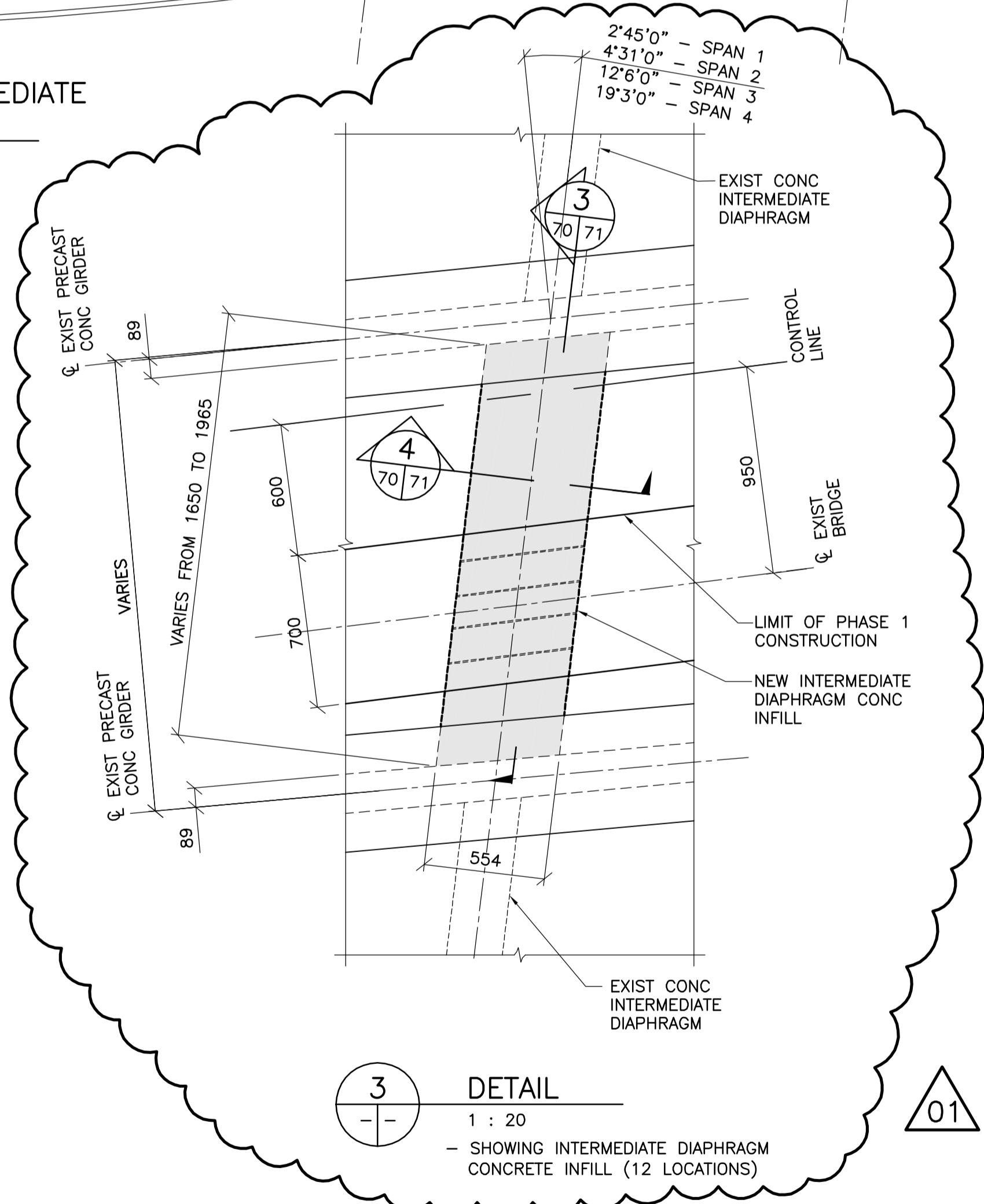
- PIER CAP AND INTERMEDIATE DIAPHRAGM CONCRETE INFILLS MUST BE COMPLETED PRIOR TO PHASE 2 DECK CONSTRUCTION AND UPON REPLACEMENT OF ALL BEARINGS



**2** DETAIL

1 : 20

- SHOWING PIER CAP CONCRETE INFILL (3 LOCATIONS)



**3** DETAIL

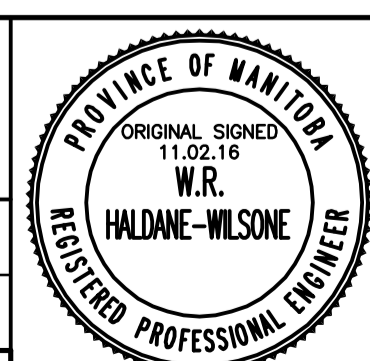
1 : 20

- SHOWING INTERMEDIATE DIAPHRAGM CONCRETE INFILL (12 LOCATIONS)



B.M. ELEV.	F.B.	DATE	BY
01	ISSUED FOR ADDENDUM 1	11.03.07	RHW
00	ISSUED FOR TENDER	11.02.18	RHW
NO.	REVISIONS	DATE	BY

<b>WARDROP</b> ATETRA TECH COMPANY	
DESIGNED BY: V.B.	CHECKED BY: R.H.W.
DRAWN BY: B.M.	APPROVED BY: R.H.W.
HOR. SCALE: AS NOTED	RELEASED FOR CONSTRUCTION DATE: 11.02.16
VERTICAL: AS NOTED	ORIGINAL SIGNED DATE: 11.02.16
DATE: 10.10.13	CONSULTANT DRAWING NO.: 0900070502-DWG-S0070



**THE CITY OF WINNIPEG**  
PUBLIC WORKS DEPARTMENT  
ENGINEERING DIVISION

**OSBORNE STREET BRIDGE**  
REHABILITATION & RELATED WORKS

**PIER CAP AND INTERMEDIATE DIAPHRAGM CONCRETE INFILL PLAN**

CITY DRAWING NUMBER <b>B109-11-075</b>
SHEET <b>70</b> OF <b>131</b>
<b>70</b>