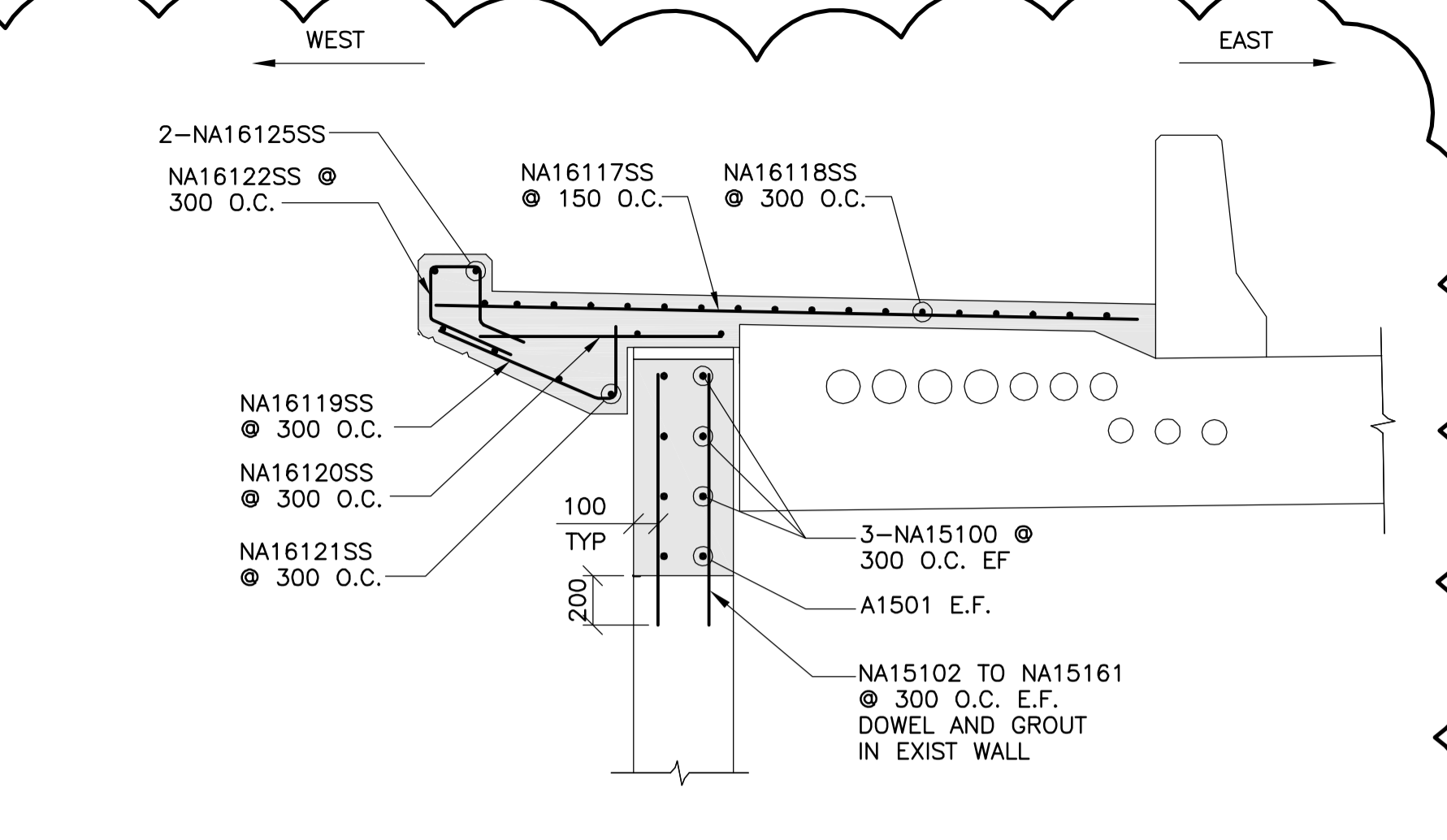
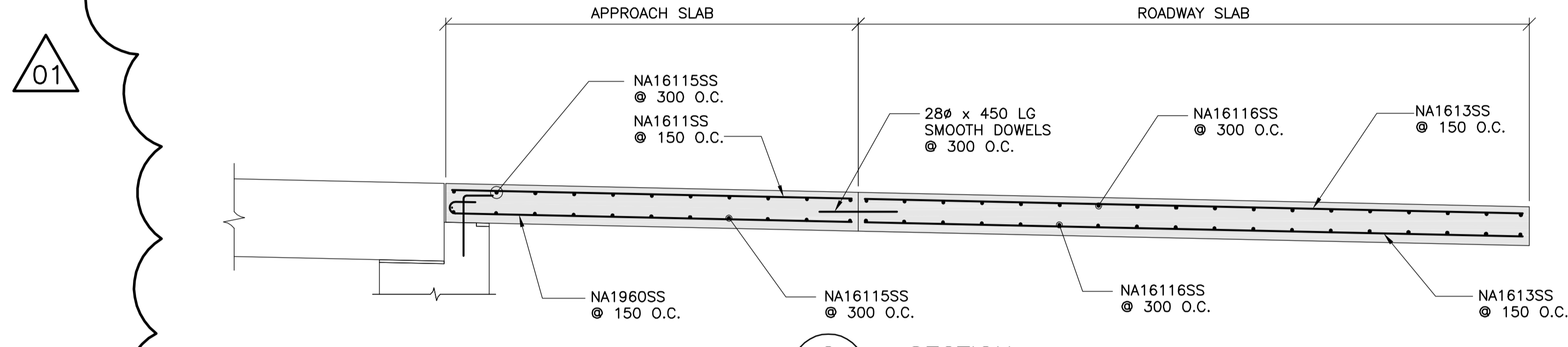


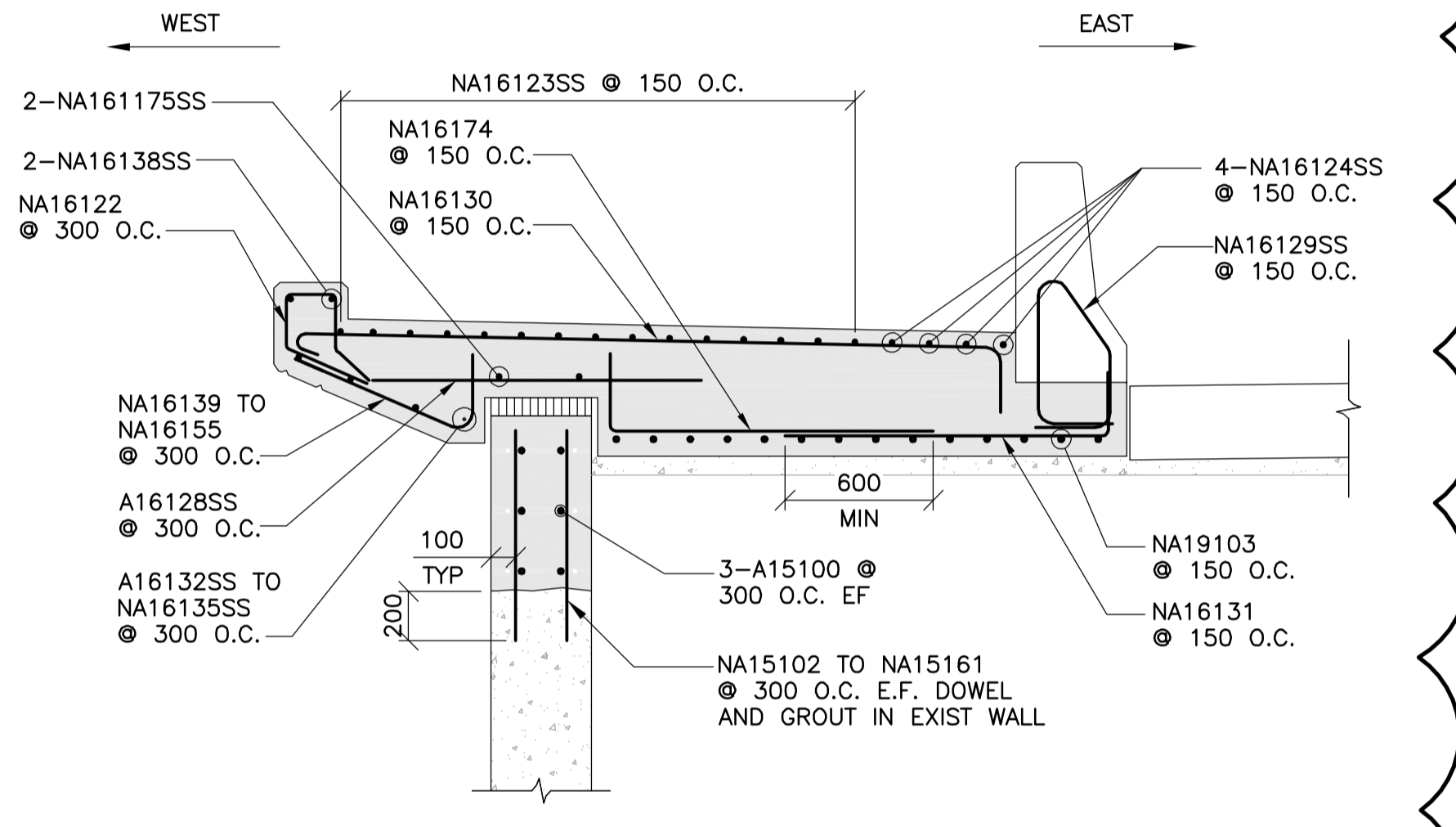
1 SECTION  
32 33  
1 : 30



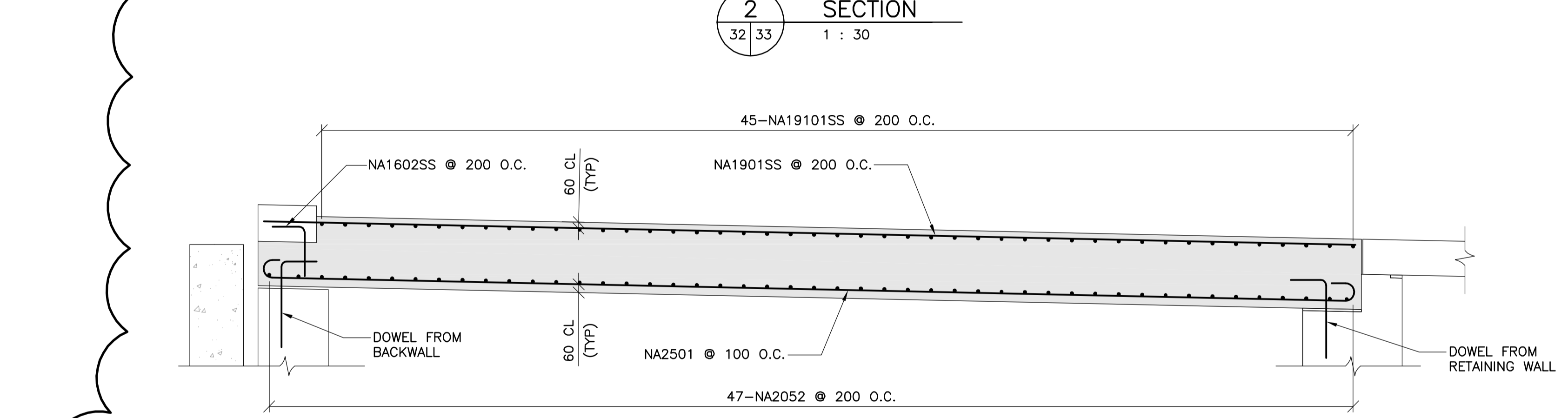
5 SECTION AT ABUTMENT SIDEWALK  
32 33  
1 : 25



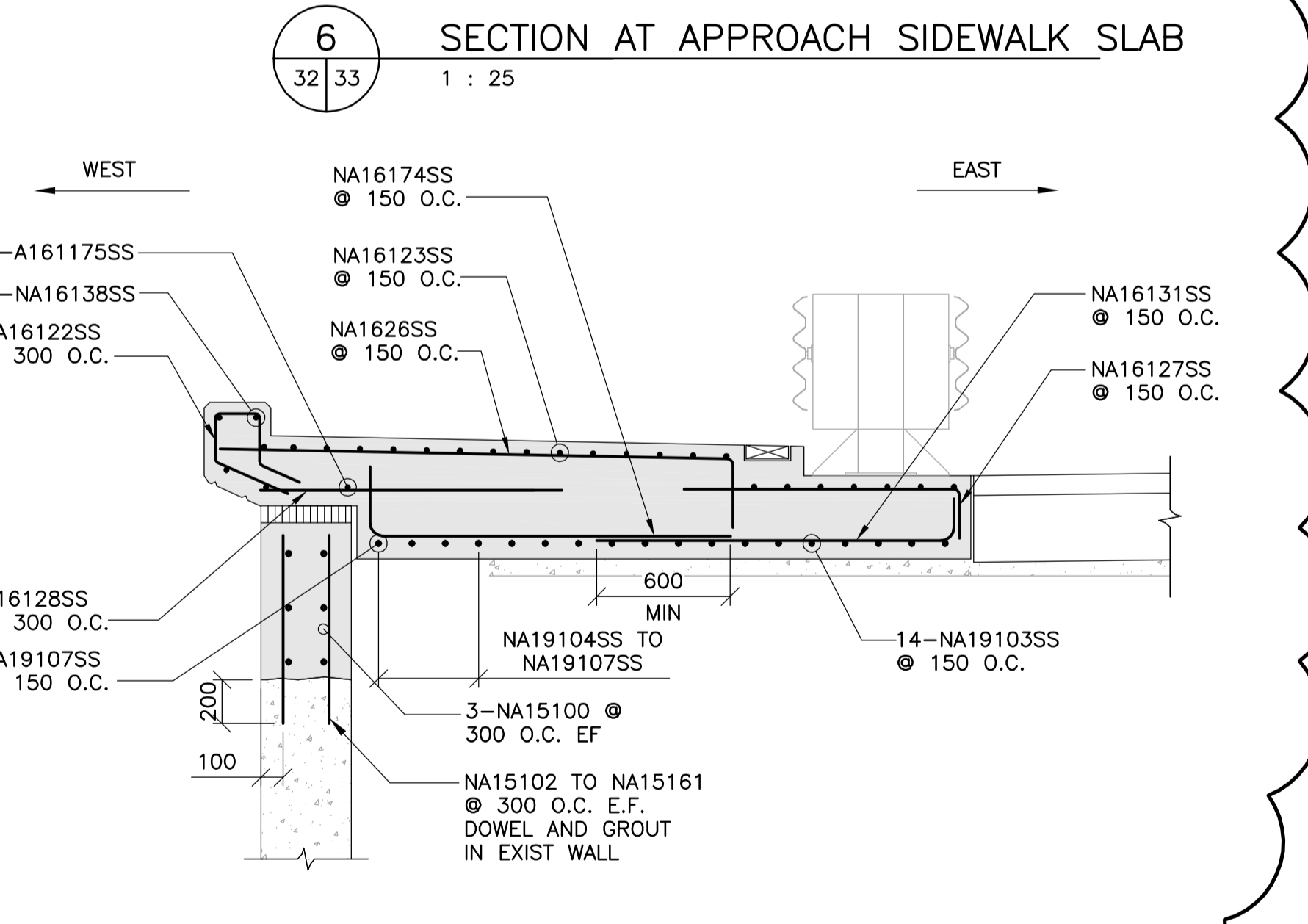
2 SECTION  
32 33  
1 : 30



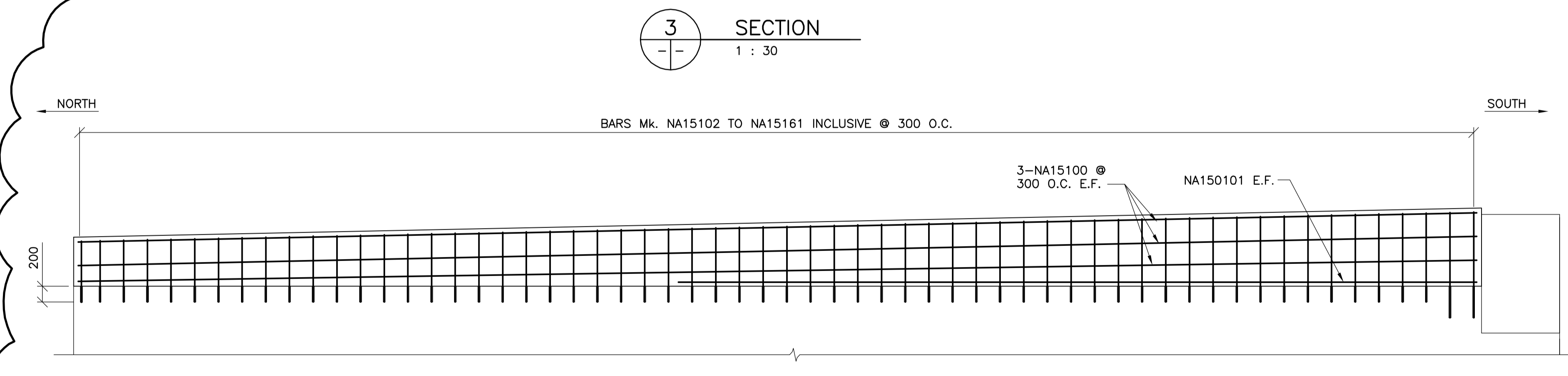
6 SECTION AT APPROACH SIDEWALK SLAB  
32 33  
1 : 25



3 SECTION  
- -  
1 : 30



7 SECTION AT QUADGUARD LOCATION  
32 33  
1 : 25



4 ELEVATION NORTH WEST RETAINING WALL  
32 33  
1 : 40  
PHASE 2 REINFORCING

01



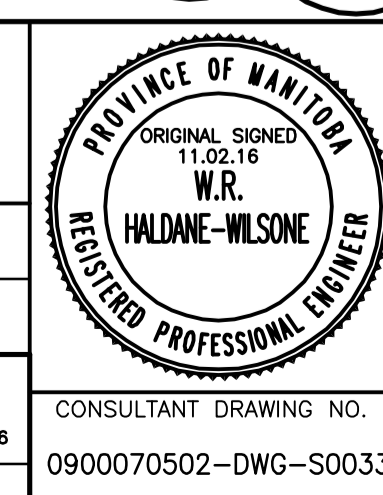
B.M. ELEV.	F.B.	DATE	BY

**WARDROP**  
ATETRA TECH COMPANY

DESIGNED BY: S.Y.      CHECKED BY: R.H.W.  
DRAWN BY: B.M.      APPROVED BY: R.H.W.

HOR. SCALE: AS NOTED      RELEASED FOR CONSTRUCTION DATE: 11.02.08  
VERTICAL: AS NOTED      ORIGINAL SIGNED DATE: 11.02.16

NO. REVISIONS      DATE      BY      DATE 10.10.20



**THE CITY OF WINNIPEG**  
PUBLIC WORKS DEPARTMENT  
ENGINEERING DIVISION

OSBORNE STREET BRIDGE  
REHABILITATION & RELATED WORKS

NORTH ABUTMENT AND APPROACH SLAB  
PHASE 2 REINFORCING

CITY DRAWING NUMBER  
B109-11-038  
SHEET 33 OF 131

CONSULTANT DRAWING NO.  
0900070502-DWG-S0033

93