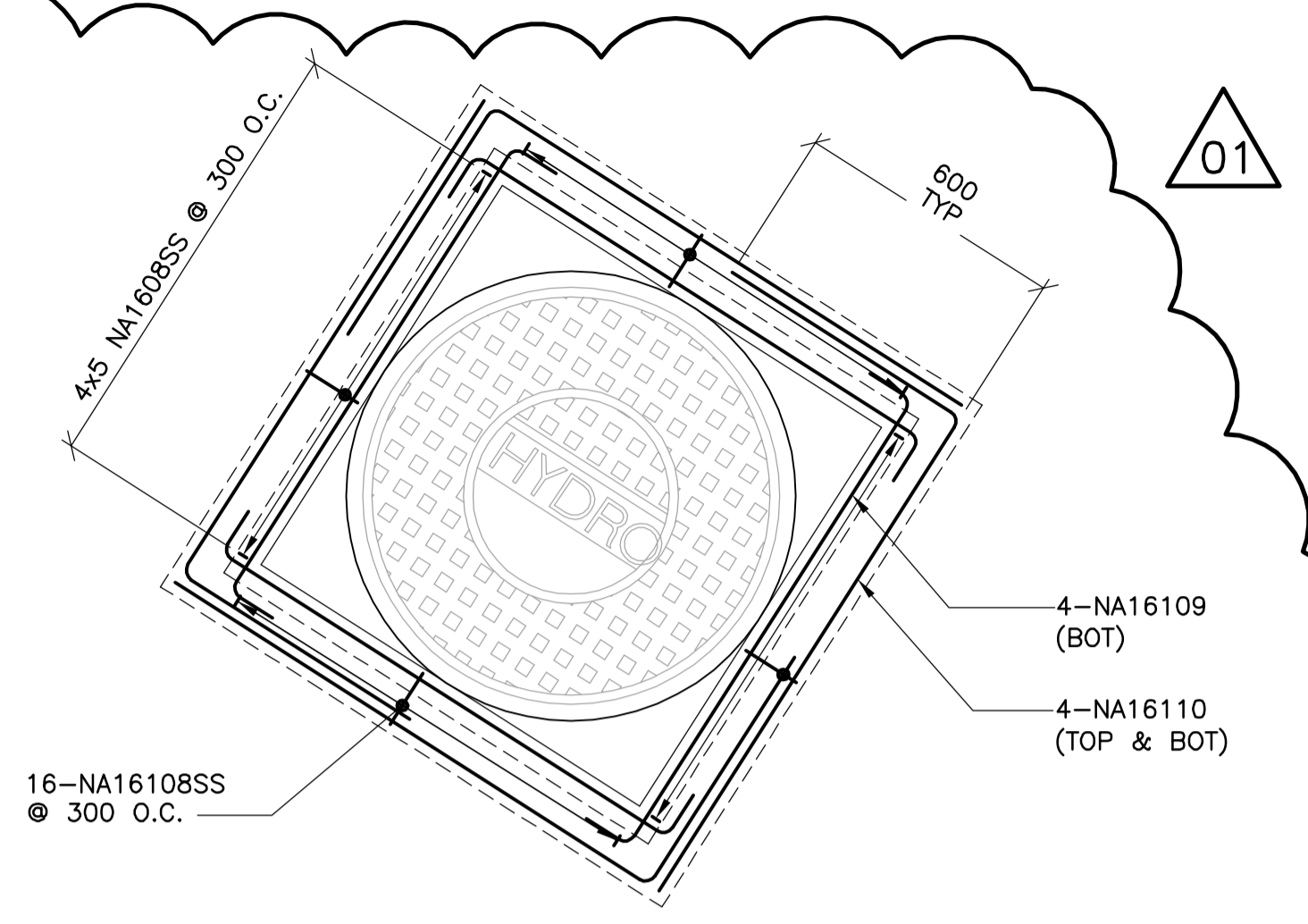
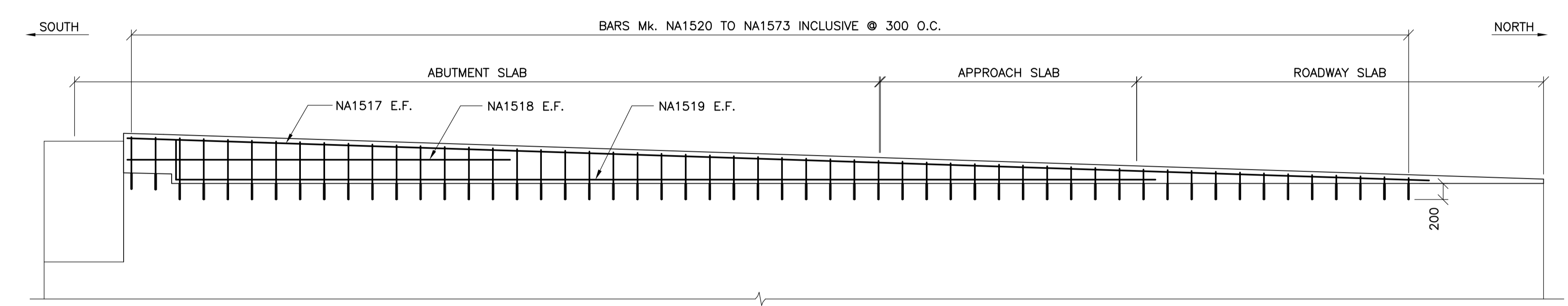


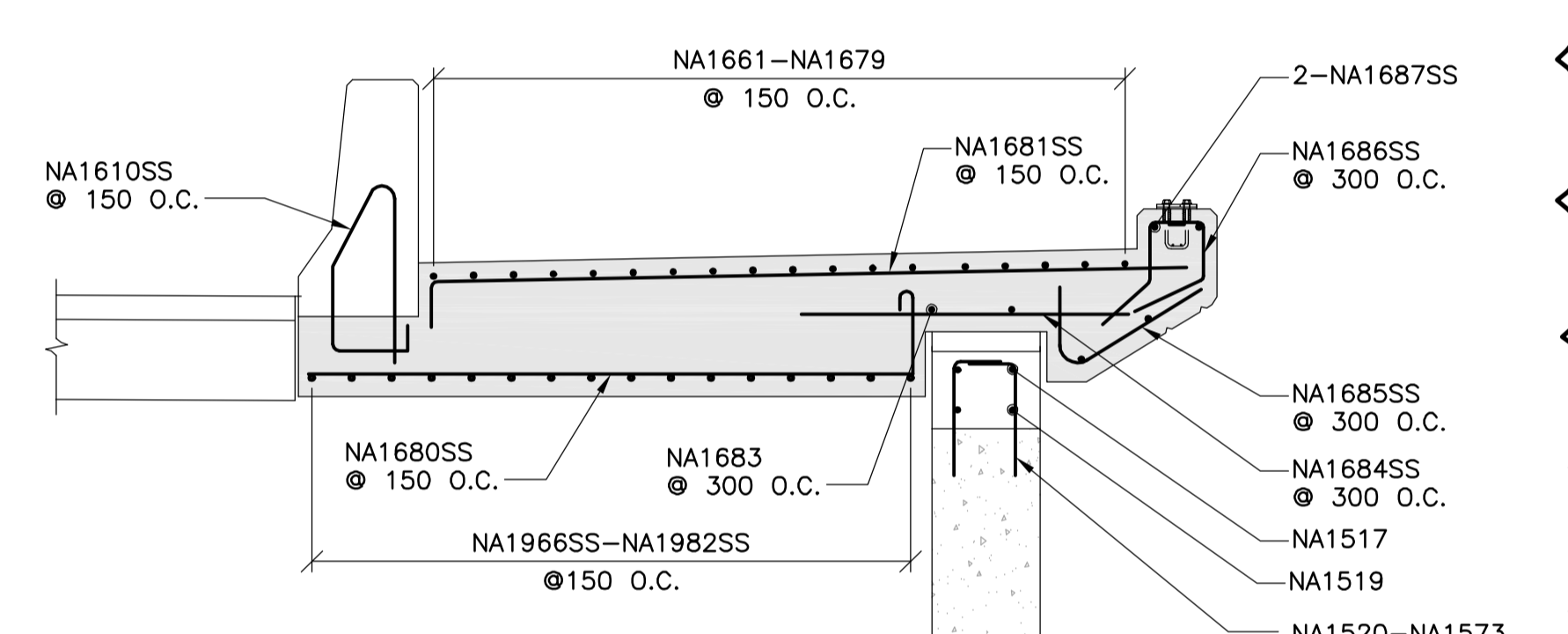
1 APPROACH AND ROADWAY SLAB - PHASE 1 REINFORCING
1 : 50



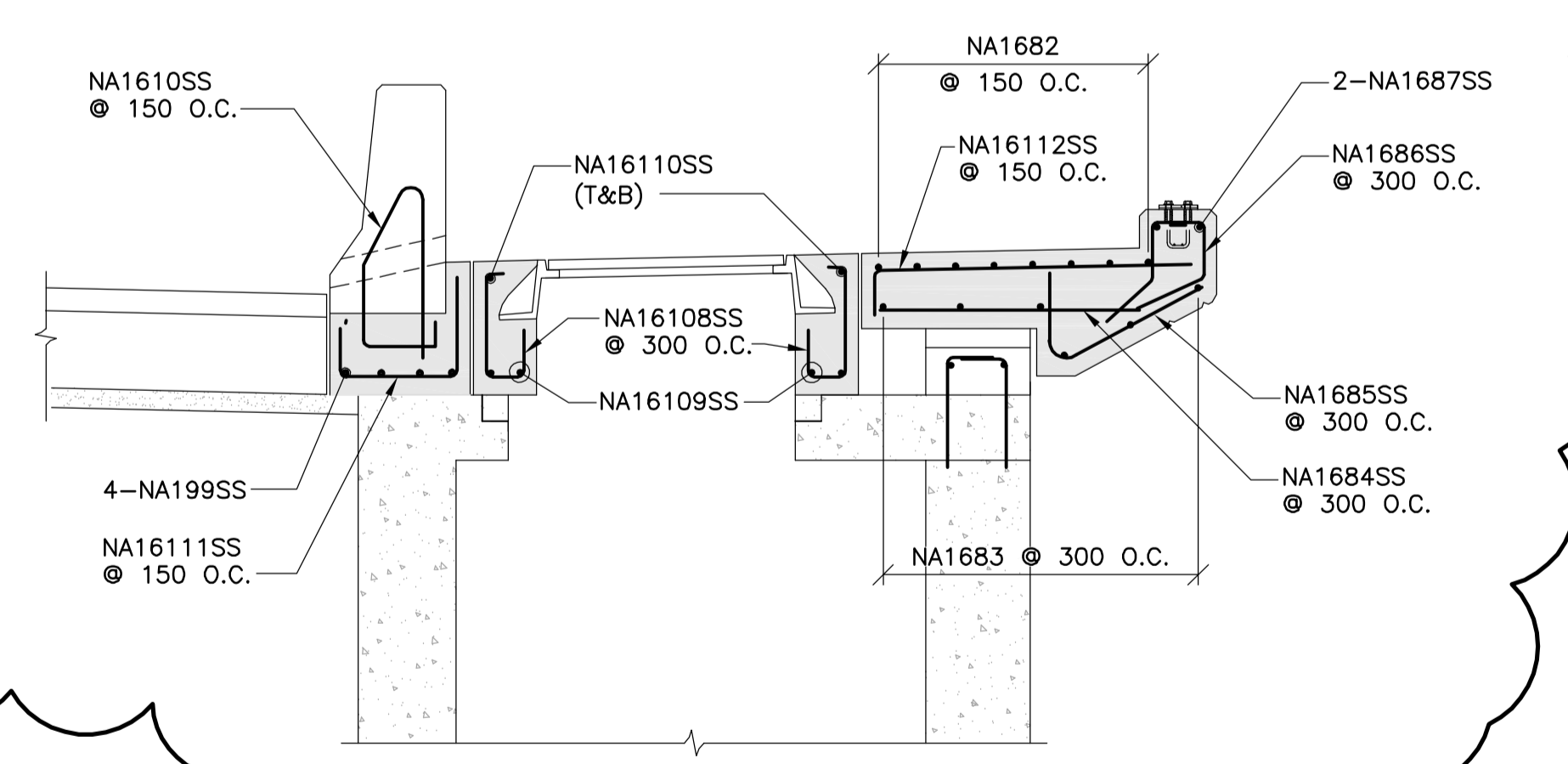
4 CURB REINF AROUND MANHOLE
1 : 15



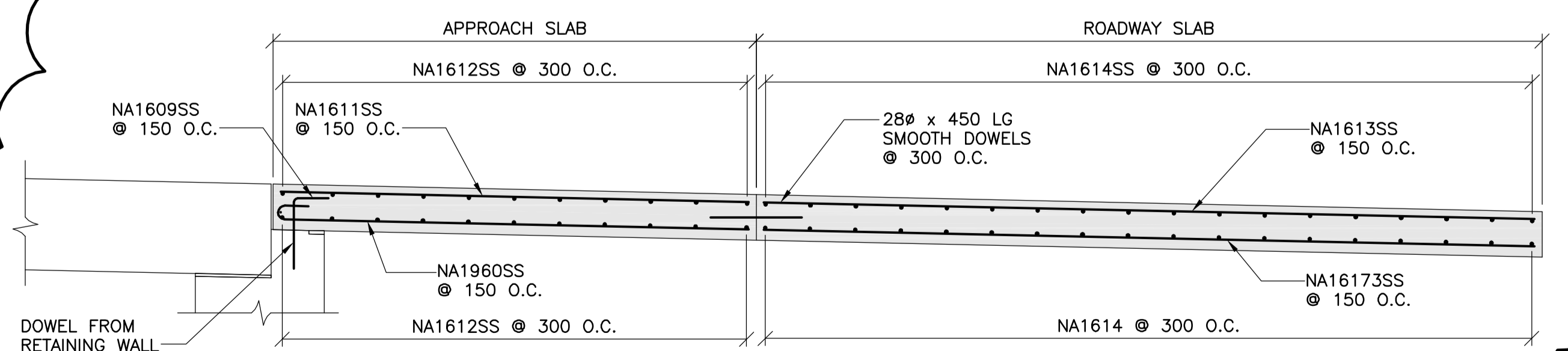
2 ELEVATION NORTH EAST WINGWALL
PHASE 1 REINFORCING
1 : 40



5 SECTION
1 : 25



6 SECTION
1 : 25

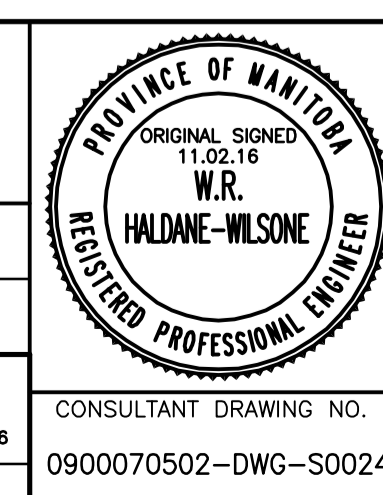


3 SECTION
1 : 30



| B.M. ELEV. | F.B. | DATE | BY |
|------------|------|------|----|
| | | | |
| | | | |
| | | | |
| | | | |
| | | | |

| | | | |
|---------------------------------------|-----------------------|----------------|---------|
| WARDROP ATETRA TECH COMPANY | | | |
| DESIGNED BY: S.Y. | CHECKED BY: R.H.W. | | |
| DRAWN BY: H.A. | APPROVED BY: R.H.W. | | |
| HOR. SCALE: AS NOTED | | | |
| VERTICAL: AS NOTED | | | |
| NO. 01 | ISSUED FOR ADDENDUM 1 | DATE: 11.03.07 | BY: RHW |
| NO. 00 | ISSUED FOR TENDER | DATE: 11.02.18 | BY: RHW |
| NO. | REVISIONS | DATE | BY |
| | | 10.10.20 | |



THE CITY OF WINNIPEG
PUBLIC WORKS DEPARTMENT
ENGINEERING DIVISION

OSBORNE STREET BRIDGE
REHABILITATION & RELATED WORKS

NORTH ABUTMENT AND APPROACH SLAB
PHASE 1 REINFORCING

| | |
|---------------------|-------------|
| CITY DRAWING NUMBER | B109-11-029 |
| SHEET OF | 24 131 |
| 24 | |