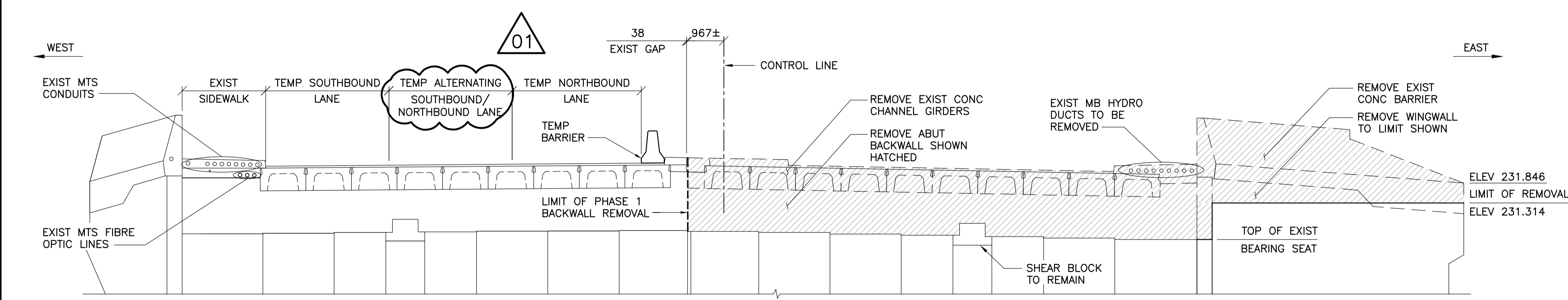
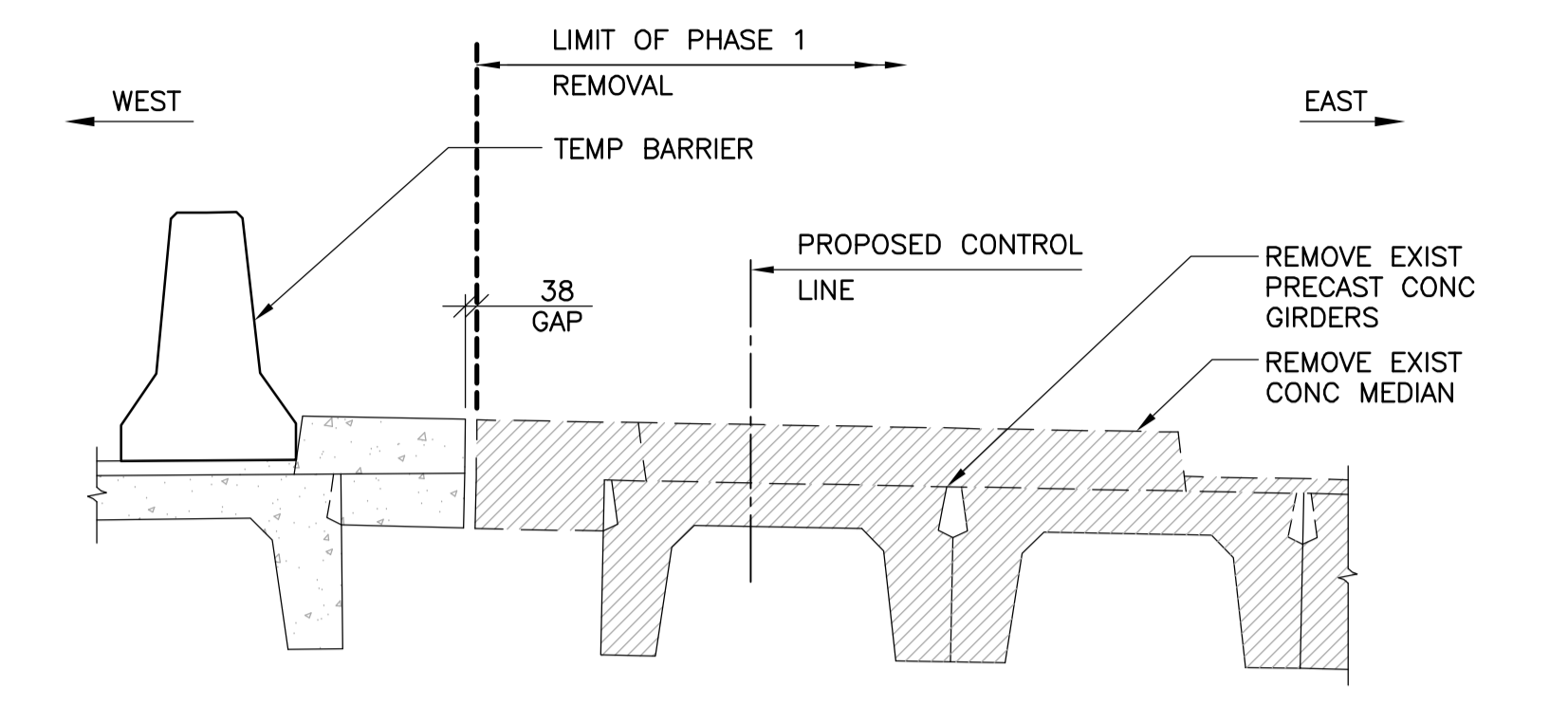


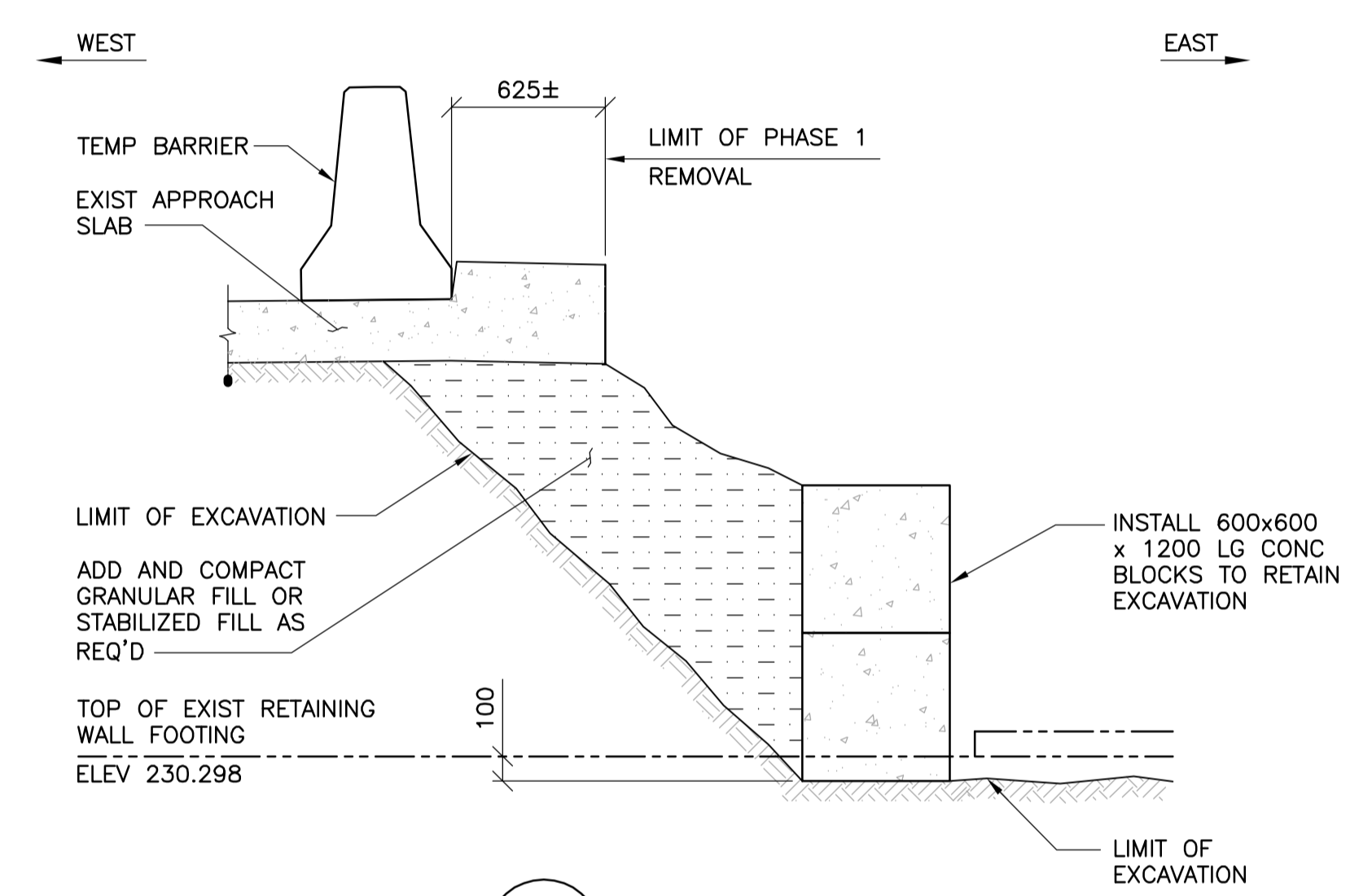
1 PLAN - NORTH ABUTMENT PHASE 1 REMOVAL  
1 : 75



2 ELEVATION - NORTH ABUTMENT PHASE 1 REMOVAL  
1 : 75



3 SECTION  
1 : 25

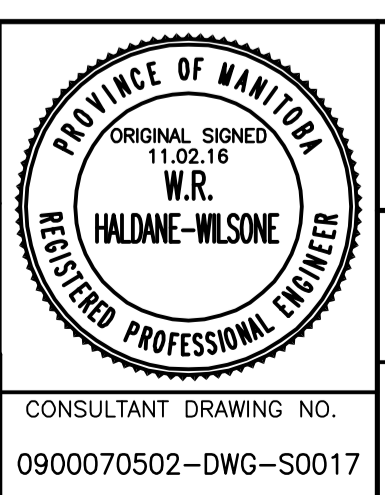


4 SECTION  
1 : 25



B.M. ELEV.	F.B.	NO.	REVISIONS	DATE	BY
		01	ISSUED FOR ADDENDUM 1	11.03.07	RHW
		00	ISSUED FOR TENDER	11.02.18	RHW

<b>WARDROP</b> ATETRA TECH COMPANY	
DESIGNED BY S.Y.	CHECKED BY R.H.W.
DRAWN BY B.M.	APPROVED BY R.H.W.
HOR. SCALE: AS NOTED	DATE 11.02.18
VERTICAL: AS NOTED	DATE 10.10.20
RELEASED FOR CONSTRUCTION ORIGINAL SIGNED MAIT OHSLETT, P. ENG. BRIDGE PROJECTS ENGINEER	



<b>THE CITY OF WINNIPEG</b> PUBLIC WORKS DEPARTMENT ENGINEERING DIVISION	CITY DRAWING NUMBER <b>B109-11-022</b> SHEET 17 OF 131
<b>OSBORNE STREET BRIDGE REHABILITATION &amp; RELATED WORKS</b>	
<b>NORTH ABUTMENT AND APPROACH SLAB PHASE 1 REMOVAL</b>	
CONSULTANT DRAWING NO. 0900070502-DWG-S0017	