

1 BRIDGE - SCOPE OF WORK
1 : 500

SCOPE OF WORK - PHASE 1 NORTHBOUND STRUCTURE (2011)

ITEM	DESCRIPTION
1	DETOUR TRAFFIC FROM NORTHBOUND STRUCTURE
2	DISCONNECT AND REMOVE EXISTING STREET LIGHTS (2 LOCATIONS) - COORDINATE WITH MANITOBA HYDRO
3	REMOVE EXISTING HANDRAIL
4	REMOVE EXISTING ASPHALT OVERLAY
5	SAWCUT AND REMOVE EXISTING CONCRETE DECK OVERHANGS TO LIMITS SHOWN
6	REMOVE EXISTING CONCRETE SIDEWALK
7	REMOVE EXISTING CONCRETE MEDIAN
8	REMOVE EXISTING CONCRETE BARRIERS AND TOP PORTION OF WINGWALLS
9	REMOVE EXISTING CONCRETE DECK TO LIMITS SHOWN
10	REMOVE EXISTING EXPANSION JOINTS
11	REMOVE EXISTING NORTH ABUTMENT PRECAST CONCRETE CHANNEL GIRDERS, APPROACH SLAB AND APPROACH ROADWAY
12	REMOVE EXISTING SOUTH ABUTMENT, APPROACH SLAB, ROADWAY SLAB AND CONCRETE SLAB TO LIMITS SHOWN
13	REMOVE EXISTING DRAINS AND RESTORE CONCRETE DECK
14	REMOVE EXISTING CONCRETE DECK AND INSTALL NEW DRAINS
15	REMOVE AND SALVAGE ABANDONED ELECTRICAL AND COMMUNICATION CABLES (BY MANITOBA HYDRO), DISPOSE CONDUITS
16	EXPOSE, INSPECT, REPAIR, AND PROTECT EXISTING LONGITUDINAL POST TENSIONING TENDONS IN CONCRETE DECK
17	REMOVE AND REPLACE BEARINGS ON PIERS AND ABUTMENTS FROM B0-957-2010
18	CONSTRUCT NEW REINFORCED CONCRETE DECK SLAB TO LIMITS SHOWN
19	CONSTRUCT NEW REINFORCED CONCRETE SLAB AT NORTH ABUTMENT
20	CONSTRUCT NEW REINFORCED CONCRETE SIDEWALK SLAB, AND CURB ON BRIDGE AND ABUTMENTS
21	REMOVE EXISTING NAVIGATION LIGHTING AND INSTALL TEMPORARY NAVIGATION LIGHTING AND TEMPORARILY RELOCATE RIVER LEVEL MONITORING SYSTEM
22	INSTALL HYDRO DUCTS IN THE SIDEWALK SLAB - COORDINATE WITH MANITOBA HYDRO
23	CONSTRUCT NEW REINFORCED CONCRETE SHOULDER BARRIERS ON BRIDGE AND ABUTMENTS
24	CONSTRUCT NEW REINFORCED CONCRETE BASES FOR STREET LIGHTS
25	CONSTRUCT MODIFIED ABUTMENTS AND APPROACHES
26	SUPPLY AND INSTALL NEW EXPANSION JOINTS
27	CONSTRUCT NEW HIGH PERFORMANCE CONCRETE OVERLAY (HPC) TO LIMITS SHOWN
28	CONSTRUCT NEW SIDEWALK WEARING SURFACE OVERLAY (WSC) TO LIMITS SHOWN
29	CONSTRUCT NEW REINFORCED CONCRETE APPROACH SLABS AND ROADWAY SLABS
30	SUPPLY AND INSTALL NEW ALUMINUM PEDESTRIAN HANDRAIL
31	REPAIR MISCELLANEOUS AREAS OF ABUTMENTS, GIRDERS AND DECK SOFFIT
32	APPLY ACTIVATED ARC ZINC SPRAY TO PRECAST CONCRETE GIRDERS AT ABUTMENT ENDS AND DIAPHRAGMS

PHASE 1 NORTHBOUND STRUCTURE (2011) (CONTINUED)

ITEM	DESCRIPTION
33	INSTALL NEW STREET LIGHTS - COORDINATE WITH MANITOBA HYDRO
34	SUPPLY AND INSTALL NEW NAVIGATION LIGHTING (4 LOCATIONS) AND RIVER LEVEL MONITOR
35	SUPPLY AND INSTALL NEW UNDER BRIDGE LIGHTING AND FIXTURES WITH VANDAL ROOF CAGES
36	OPEN NORTHBOUND STRUCTURE TO TRAFFIC

SCOPE OF WORK - PHASE 2 SOUTHBOUND STRUCTURE (2012)

ITEM	DESCRIPTION
37	DETOUR TRAFFIC FROM SOUTHBOUND STRUCTURE
38	DISCONNECT AND REMOVE EXISTING STREET LIGHTS (2 LOCATIONS) - COORDINATE WITH MANITOBA HYDRO. REMOVE EXISTING NAVIGATION LIGHTING AND INSTALL TEMPORARY NAVIGATION LIGHTING
39	REMOVE EXISTING HANDRAIL
40	REMOVE EXISTING ASPHALT OVERLAY
41	SAWCUT AND REMOVE EXISTING CONCRETE DECK OVERHANGS TO LIMITS SHOWN
42	REMOVE EXISTING CONCRETE MEDIAN
43	REMOVE EXISTING CONCRETE BARRIERS AND TOP PORTION OF WINGWALLS
44	REMOVE EXISTING CONCRETE DECK TO LIMITS SHOWN
45	REMOVE EXISTING EXPANSION JOINTS
46	REMOVE EXISTING NORTH ABUTMENT PRECAST CONCRETE CHANNEL GIRDERS, APPROACH SLAB AND APPROACH ROADWAY
47	REMOVE EXISTING SOUTH ABUTMENT, APPROACH SLAB, ROADWAY SLAB AND CONCRETE SLAB TO LIMITS SHOWN
48	REMOVE EXISTING DRAINS AND RESTORE CONCRETE DECK
49	REMOVE EXISTING CONCRETE DECK AND INSTALL NEW DRAINS
50	REMOVE AND SALVAGE ABANDONED ELECTRICAL AND COMMUNICATION CABLES (BY MTS), DISPOSE CONDUITS
51	EXPOSE, INSPECT, REPAIR, AND PROTECT EXISTING LONGITUDINAL POST TENSIONING TENDONS IN CONCRETE DECK

SCOPE OF WORK - PHASE 2 SOUTHBOUND STRUCTURE (2012) CONTINUED

ITEM	DESCRIPTION
52	REMOVE AND REPLACE BEARINGS ON PIERS AND ABUTMENTS FROM B0-957-2010
53	CONSTRUCT NEW REINFORCED CONCRETE DECK SLAB TO LIMITS SHOWN
54	CONSTRUCT NEW REINFORCED CONCRETE SLAB AT NORTH ABUTMENT
55	CONSTRUCT NEW REINFORCED CONCRETE SIDEWALK SLAB, AND CURB ON BRIDGE AND ABUTMENTS
56	RELOCATE MTS CONDUITS IN THE CONCRETE SIDEWALK SLAB - COORDINATE WITH MTS
57	CONSTRUCT NEW REINFORCED CONCRETE SHOULDER BARRIERS ON BRIDGE & ABUTMENTS
58	CONSTRUCT NEW REINFORCED CONCRETE BASES FOR STREET LIGHTS
59	CONSTRUCT MODIFIED ABUTMENTS AND APPROACHES
60	SUPPLY AND INSTALL NEW EXPANSION JOINTS
61	CONSTRUCT NEW HIGH PERFORMANCE CONCRETE OVERLAY (HPC) TO LIMITS SHOWN
62	CONSTRUCT NEW SIDEWALK WEARING SURFACE OVERLAY (WSC) TO LIMITS SHOWN
63	CONSTRUCT NEW REINFORCED CONCRETE APPROACH SLABS AND ROADWAY SLABS
64	SUPPLY AND INSTALL NEW ALUMINUM PEDESTRIAN HANDRAIL
65	REPAIR MISCELLANEOUS AREAS OF ABUTMENTS, GIRDERS AND DECK SOFFIT
66	APPLY ACTIVATED ARC ZINC SPRAY TO PRECAST CONCRETE GIRDERS AT ABUTMENT ENDS AND DIAPHRAGMS
67	INSTALL NEW STREET LIGHTS - COORDINATE WITH MANITOBA HYDRO
68	SUPPLY AND INSTALL NEW NAVIGATION LIGHTING (4 LOCATIONS)
69	SUPPLY AND INSTALL NEW UNDER BRIDGE LIGHTING FIXTURES WITH VANDAL ROOF CAGES
70	CONSTRUCT MODIFIED PIER CAPS TO JOIN TOGETHER CONCRETE DECK SLAB AND PIER CAPS AND INTERMEDIATE DIAPHRAGMS
71	CONSTRUCT NEW REINFORCED CONCRETE MEDIAN BARRIERS ON BRIDGE AND ABUTMENTS
72	INSTALL SLOPE PAVING PROTECTION BENEATH NORTHBOUND AND SOUTHBOUND BRIDGES
73	OPEN SOUTHBOUND STRUCTURE TO TRAFFIC

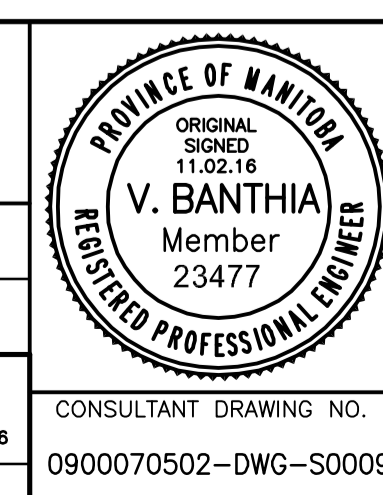


B.M. ELEV.	F.B.	NO.	REVISIONS	DATE	BY
		01	ISSUED FOR ADDENDUM 1	11.03.07	VB
		00	ISSUED FOR TENDER	11.02.18	VB

WARDROP
ATETRA TECH COMPANY

DESIGNED BY: S.Y.	CHECKED BY: V.B.
DRAWN BY: B.M.	APPROVED BY: R.H.W.
HOR. SCALE: AS NOTED	DATE: 11.02.18
VERTICAL: AS NOTED	DATE: 10.02.16

RELEASED FOR CONSTRUCTION ORIGINAL SIGNED
DATE: 11.02.18
CONSULTANT DRAWING NO. 0900070502-DWG-S0009
MAIT CHOLETT, P.ENG. BRIDGE PROJECTS ENGINEER



THE CITY OF WINNIPEG
PUBLIC WORKS DEPARTMENT
ENGINEERING DIVISION

OSBORNE STREET BRIDGE
REHABILITATION & RELATED WORKS

BRIDGE SCOPE OF WORK

CITY DRAWING NUMBER: B109-11-014
SHEET 9 OF 131

9